



# How to Replace a Window Arm for an Out-Swinging Casement Window

This guide is for replacing a window arm lever for a out-swinging casement window with a turnable window handle.

Written By: Nabil Patel



## INTRODUCTION

Have you ever felt that your room was too hot? But, when you go to open your window to get a blast of nice refreshing air, you realize that your window won't open. Fear not, this guide will demonstrate how to replace a window arm for a casement window. From unlocking the window to removing the defective window arm to installing a new one, it has the entire step-by-step process covered.

A common issue with out-swinging windows is that the window arm ends up becoming detached from its track due to overuse or overextension. By following this guide, the reader will be able to resolve this problem permanently, and receive fresh air in no time at all.



### TOOLS:

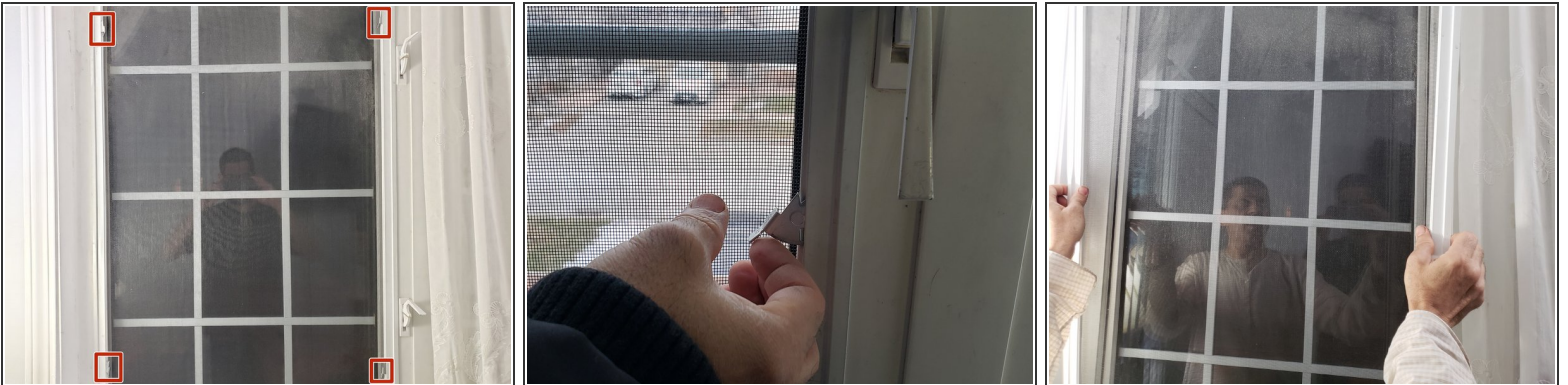
- [Small Flathead Screw Driver](#) (1)
  - [Square #0 Screwdriver](#) (1)
-

## Step 1 — Window Arm



- Unlock the window lock by flipping both switches up until they are pointed horizontally outwards, facing the user.

## Step 2



- Pull open all four metal screen latches holding the window screen in place.
  - Place hands on both sides of the screen and lift upwards to remove it.
- i** In some cases only two screen latches need to be unlocked for the screen to become loose enough to remove.



### Step 3



- Turn the window handle clockwise to open the window.

### Step 4



- Use a flathead screwdriver in a clockwise direction to remove the 2.11 mm screw from the bottom of the window handle.

## Step 5



- Turn the loosened window handle in either direction to remove it.

## Step 6



- Detach the window arm from the track running underneath the window.
- ⓘ In most cases window arm has already been detached, so this step would be skipped.



## Step 7



- Using a Square #0 screwdriver, remove the four 25.4 mm screws placed on the outside of the window sill.

## Step 8



- Pull the body of the window operator which when removed will vacate a slot.
- Pull the window arm diagonally through the slot.

## Step 9



- Insert the new window operator into the slot, ensuring it is tightly fit into place.
- Attach a replacement window arm to the track on the bottom of the window panel.

To reassemble your device, follow these instructions in reverse order.