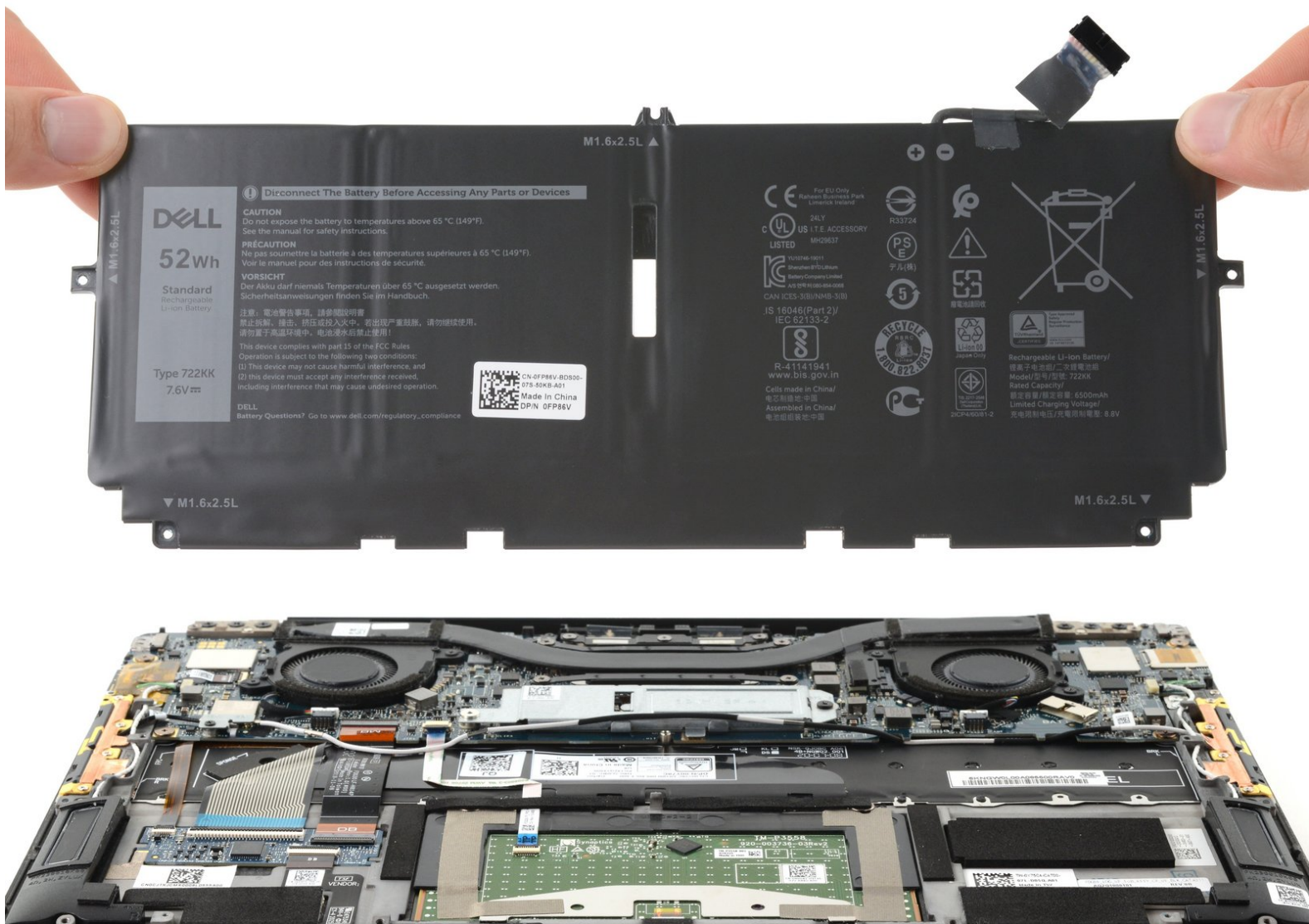




Dell XPS 13 9300 Battery Replacement

This guide shows how to remove and replace the...

Written By: Clay Eickemeyer



INTRODUCTION

This guide shows how to remove and replace the battery for the Dell XPS 13 9300 laptop.

For your safety, discharge your battery below 25% before disassembling your device. This reduces the risk of a dangerous thermal event if the battery is accidentally damaged during the repair. If your battery is swollen, [take appropriate precautions](#).



TOOLS:

- [iFixit Opening Picks \(Set of 6\)](#) (1)
- [Phillips #00 Screwdriver](#) (1)
- [T5 Torx Screwdriver](#) (1)
- [Spudger](#) (1)



PARTS:

- [Dell XPS 13 9300 Battery](#) (1)

Step 1 — Unfasten the lower case



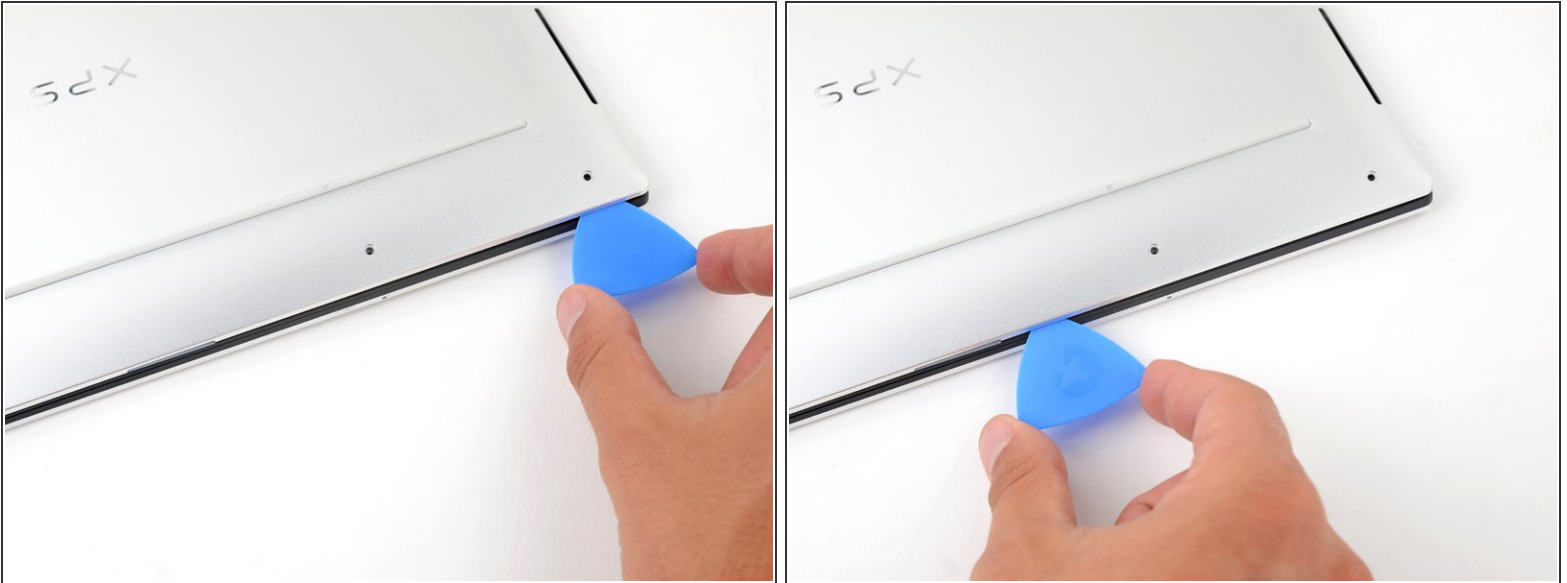
- Use a T5 Torx screwdriver to remove the eight 3.3 mm screws securing the case.

Step 2 — Insert an opening pick



- Insert an opening pick between the lower case and the chassis on the front right edge.

Step 3 — Release the case's front clips



- Slide the pick along the front edge to release the clips securing the lower case.

Step 4 — Release the remaining clips



- Continue sliding the opening pick along the perimeter of the lower case to release the remaining clips.

Step 5



- Lift the lower case from the chassis and remove it.

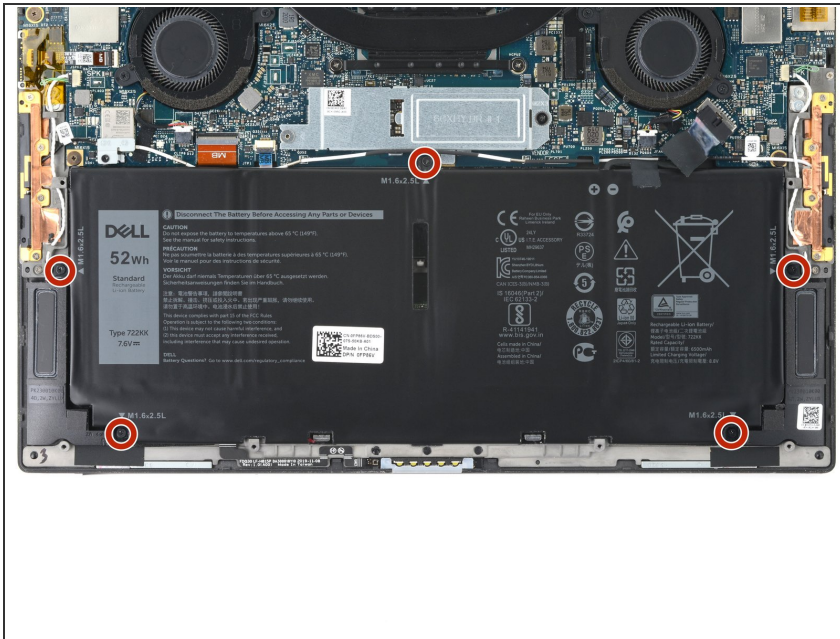
✦ During reassembly, this is a good point to power on your laptop and test all functions before sealing it up. Be sure to power your laptop back down before you continue working.

Step 6 — Disconnect the battery



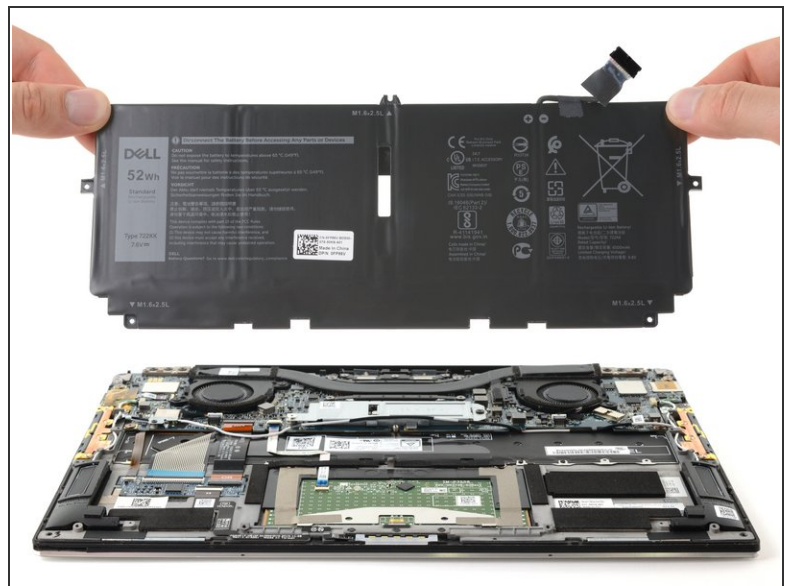
- Grip the pull tab on the battery connector with your fingers and gently pull away from the socket to disconnect it.
- ✦ After you disconnect the battery, some of your laptop's startup (BIOS) settings will revert to their defaults.
- You may need to run BIOS setup to reset the system clock as well as any specialized disk settings before you can boot up your XPS.

Step 7 — Unfasten the battery



- Use your Phillips screwdriver to remove the five 2.8 mm-long screws securing the battery.

Step 8 — Remove the battery



- Remove the battery from its recess.

To reassemble your device, follow these instructions in reverse order.

For optimal performance, [calibrate your newly installed battery](#) after completing this guide.

Take your e-waste to an [R2 or e-Stewards certified recycler](#).

Repair didn't go as planned? Try some [basic troubleshooting](#), or ask our [Dell XPS 13 9300 answers community](#) for help.