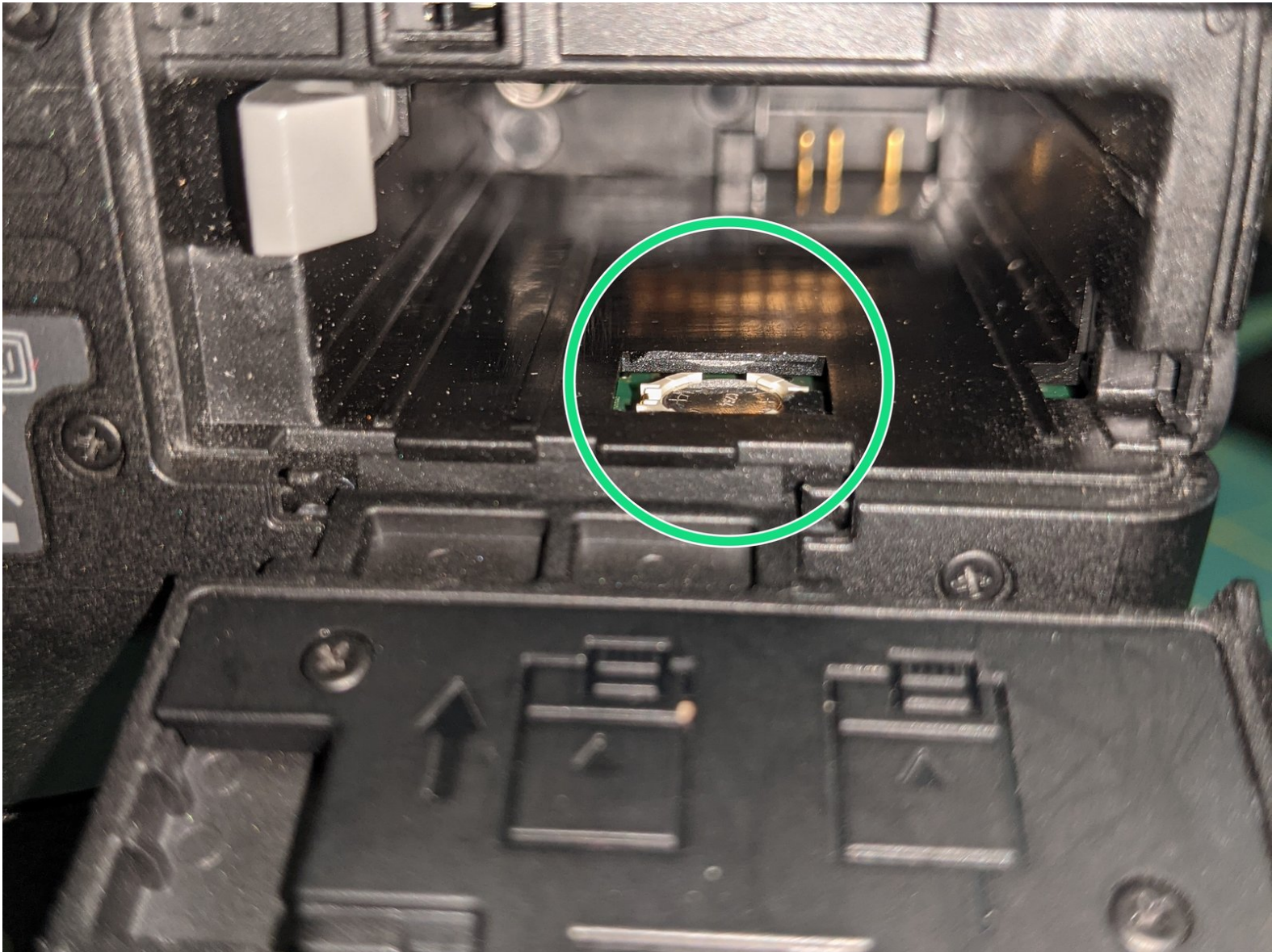




# Canon EOS Rebel T2i Clock Battery Replacement

T2i CMOS / Clock battery replacement.

Written By: Alejandro Marino



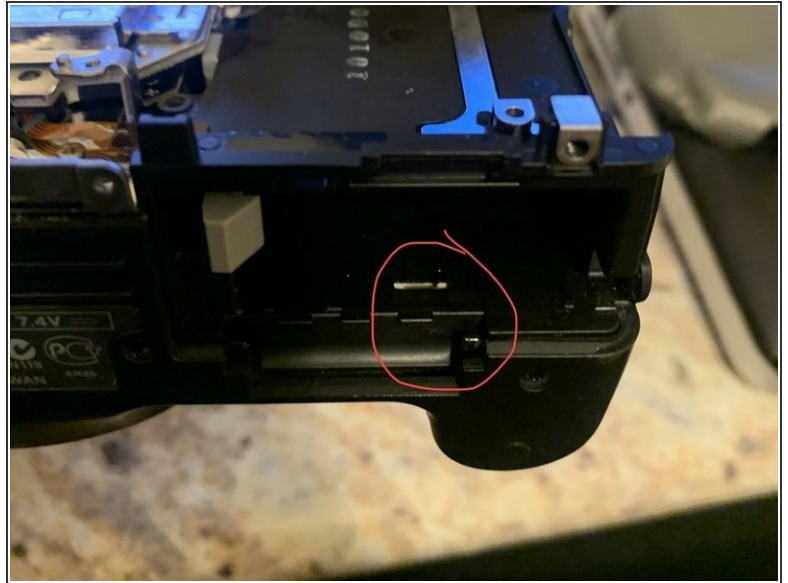
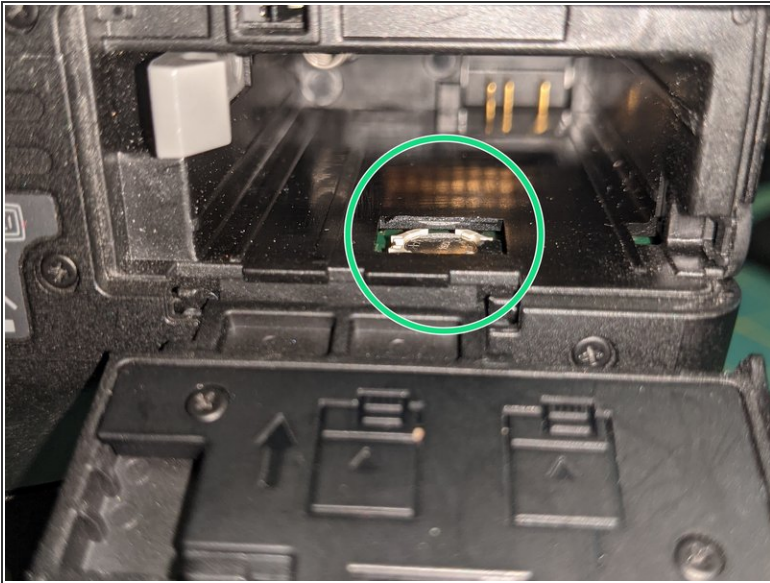
**TOOLS:**

- [Flathead Screwdriver](#) (1)

**PARTS:**

- [MS614SE battery](#) (1)

## Step 1 — Clock Battery

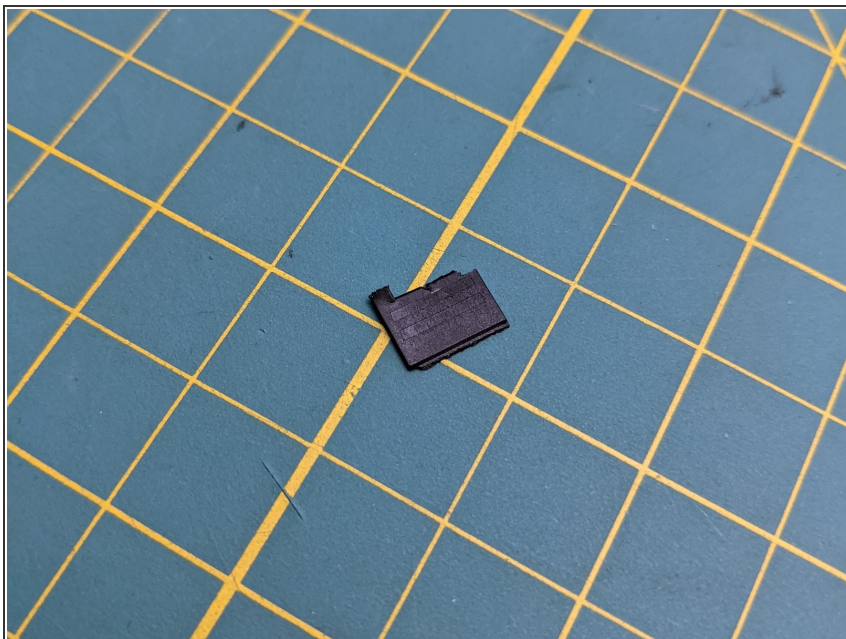


⚠ This is not reversible and your camera will look like this forever after snapping off the plastic clip.

- Unfortunately I don't have a before picture, but the battery is under a plastic cover that you have to snap off.
- I did not take the 2nd picture, but it is an example of what it looks like here before breaking the plastic. Source:
  - [Replacing internal backup battery of Canon EOS Rebel T3i camera](#)

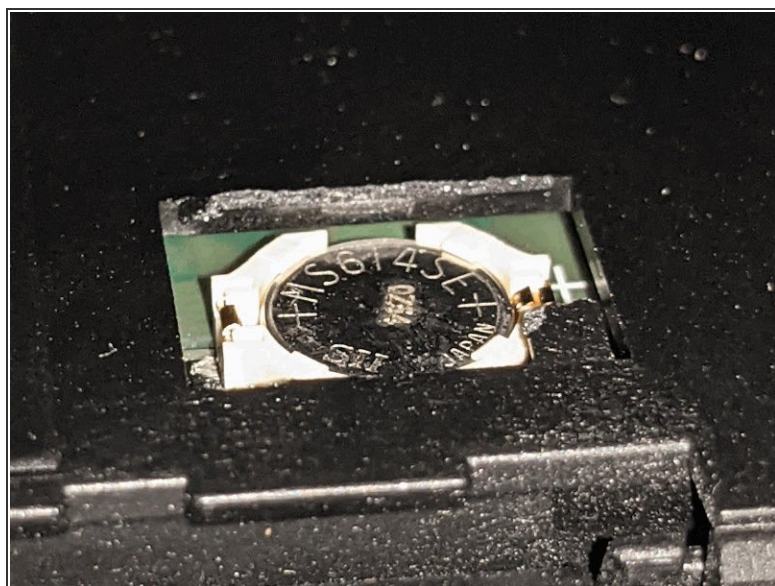


## Step 2



- Can use thin flat-head screwdriver or tweezers to pry off the cover and reveal the battery slot.

## Step 3



- Can now see the battery and any model numbers on it. On my camera it is labeled "MS614SE"
- Use a thin flat-head screwdriver or your tweezers to get the old battery out.
- Slide in the new one and push it in with your finger.

