



# Toshiba Satellite A85-S107 15" Wireless Card Replacement

This guide will demonstrate how to install the wireless card in your Toshiba A85-S107 15" Laptop.

Written By: Travis



## INTRODUCTION

This guide will demonstrate how to install the wireless card in your Toshiba A85-S107 15" Laptop.



### TOOLS:

- [Phillips #0 Screwdriver](#) (1)



### PARTS:

- [PA3458U-1MPC Wireless Card](#) (1)

## Step 1 — Back Panel



- Power off the laptop.

⚠ Disconnect the power cable from the laptop. If you do not, electric shock may result.

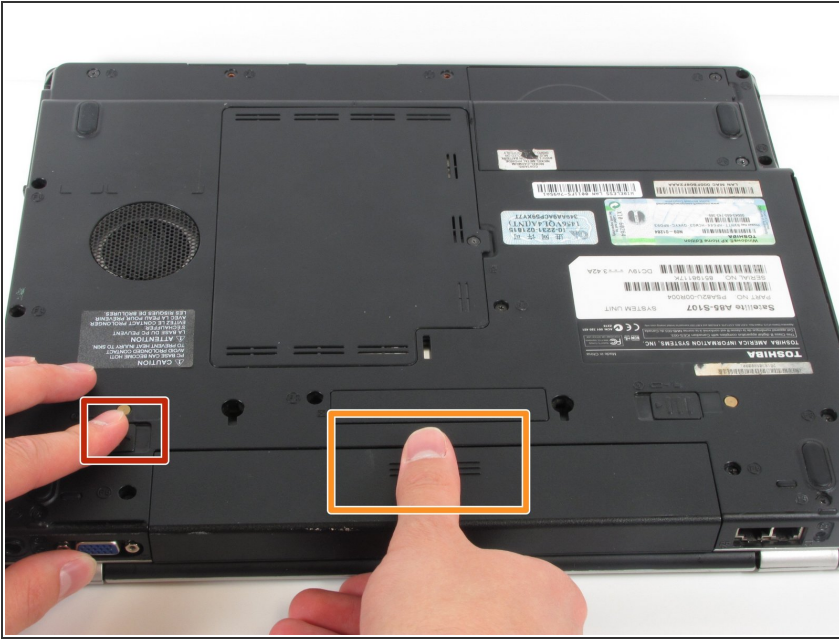
## Step 2



- Flip the laptop over and orient it such that the battery faces towards you and the front faces away from you as shown in the diagram.
- Unlock the battery by sliding the tab shown to the right.
- This tab will latch into place.

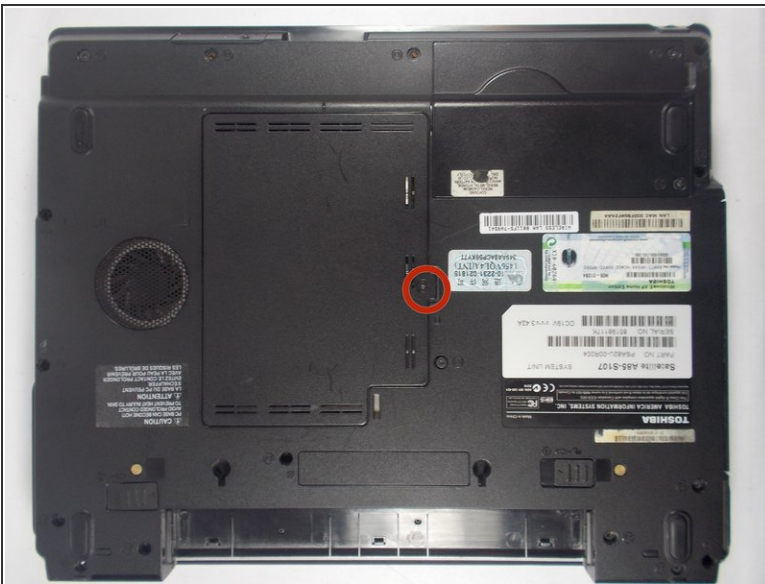


## Step 3



- Slide the tab shown to the left and remain holding it.
- ⓘ This tab does not lock into place like in the first step.
- Place your thumb on the grips of the battery as shown.
- While holding onto the grips, pull the battery towards you and away from the laptop.

## Step 4



- Loosen this 5 mm Phillips #0 screw found in the center of the lower case.
- ⓘ The screw will not come out completely, it will stay connected to the center plate.

## Step 5



- Remove the center plate by lifting it and sliding it to the right.

⚠ If the back panel is difficult to remove and feels like it is going to break, DO NOT force it. Check to confirm that the screw is loose before attempting again.

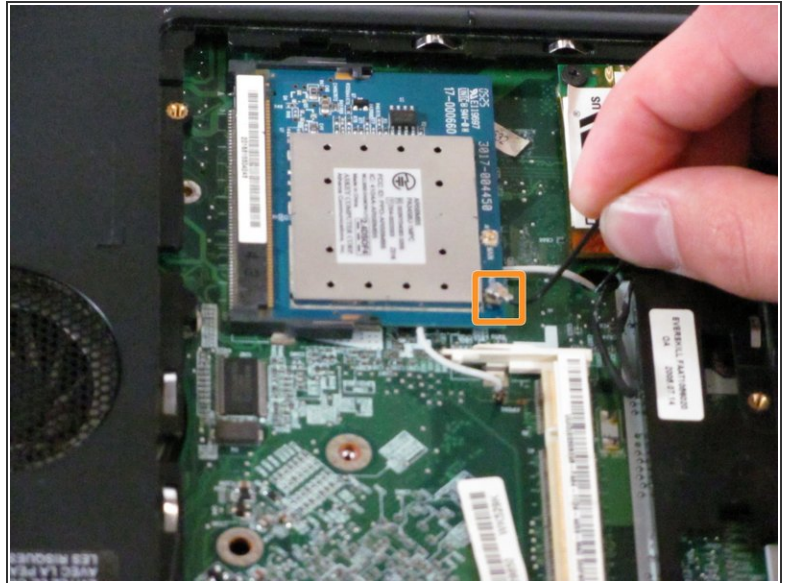
## Step 6



- The computer should be open with many of the internal components shown. You can now access the RAM, and wireless card.

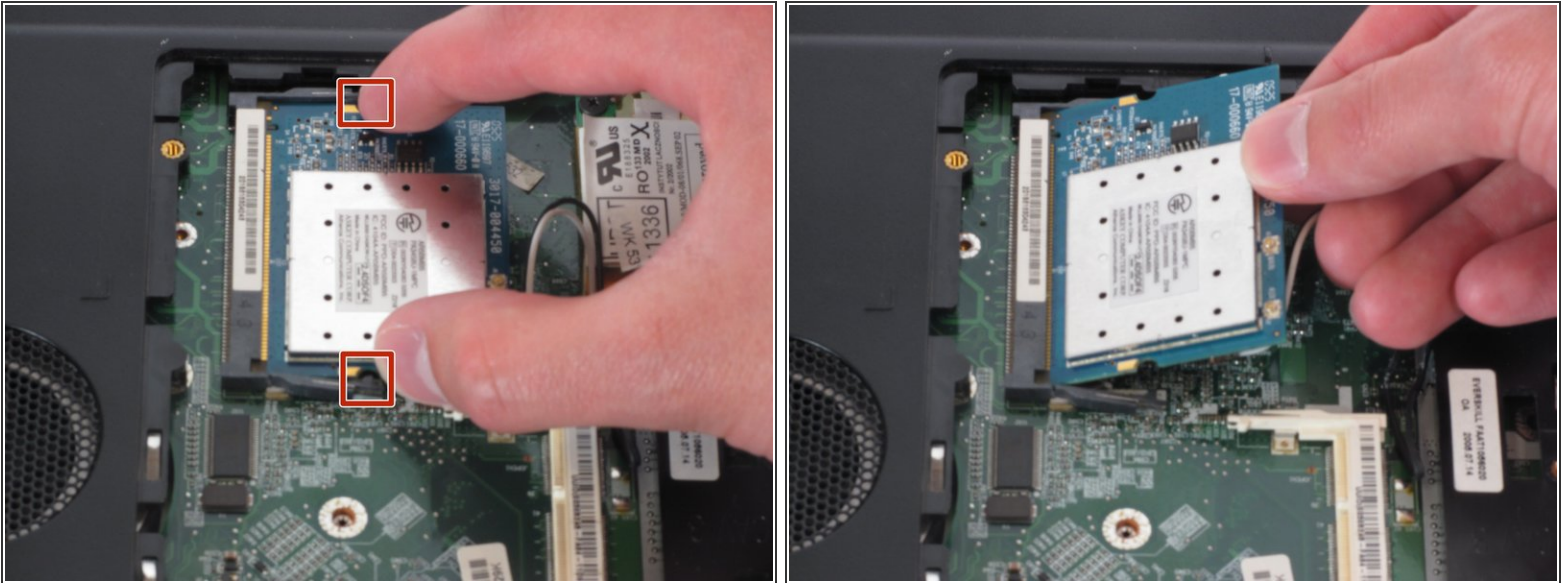


## Step 7 — Wireless Card



- Carefully pull the white auxiliary wire out of its socket on the wireless card.
  - Now repeat this step with the black auxiliary wire.
- ⚠ Be careful when removing the wires, as the wireless card and the wires are delicate.

## Step 8



- Push the two black tabs, located on the sides of the card, away from the card.
- The right side of the wireless card should now pop out of its holder.
- Pull the wireless card out by lifting it from the dock and sliding it towards the right.

To reassemble your device, follow these instructions in reverse order.