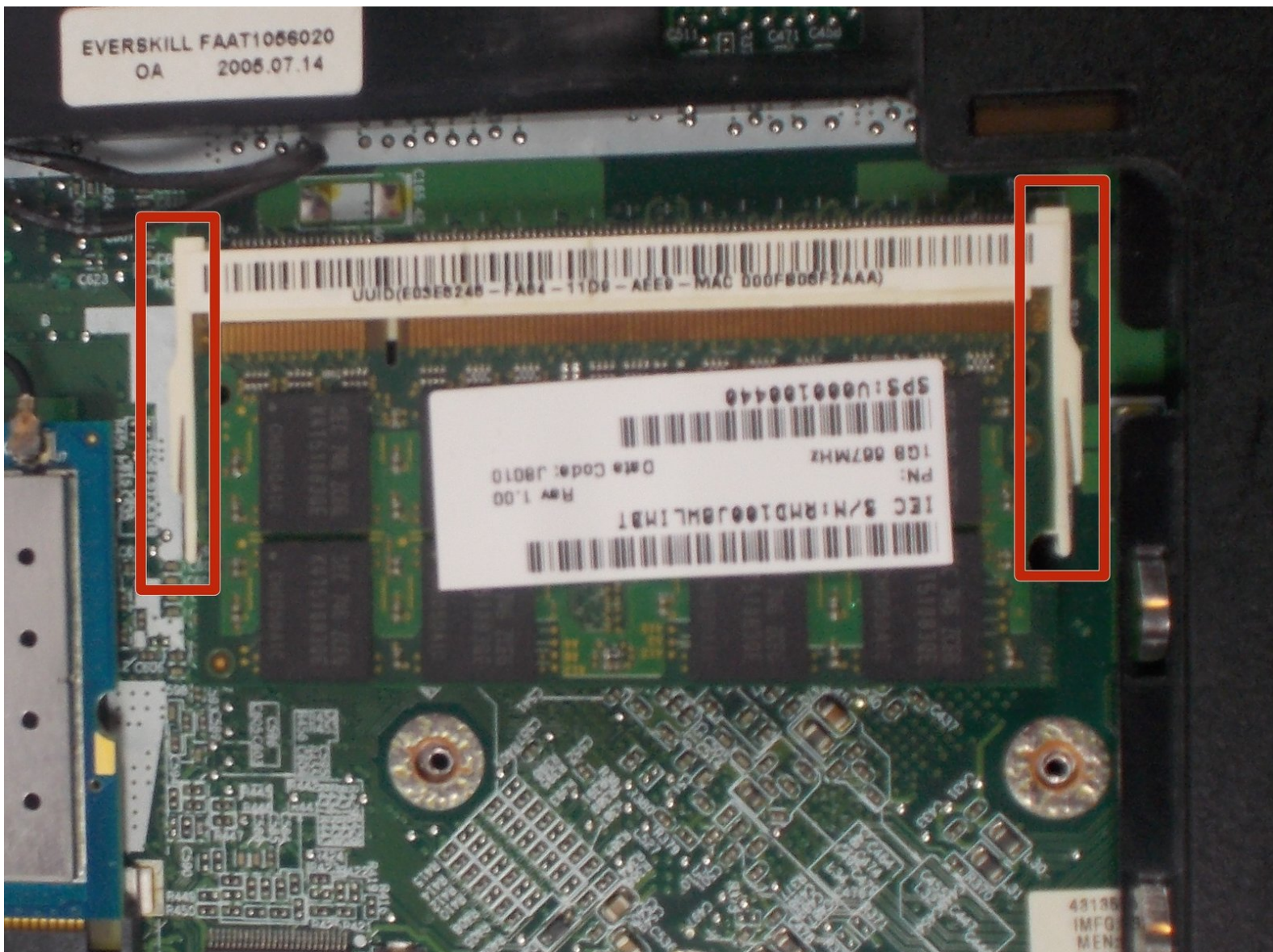




# Toshiba Satellite A85-S107 15" RAM Replacement

Use this guide to replace or install RAM in...

Written By: Travis



## INTRODUCTION

Use this guide to replace or install RAM in your Toshiba laptop.



### TOOLS:

- [Phillips #0 Screwdriver](#) (1)



### PARTS:

- [PC2100 512 MB RAM Chip](#) (1)

## Step 1 — Back Panel



- Power off the laptop.

**⚠ Disconnect the power cable from the laptop. If you do not, electric shock may result.**

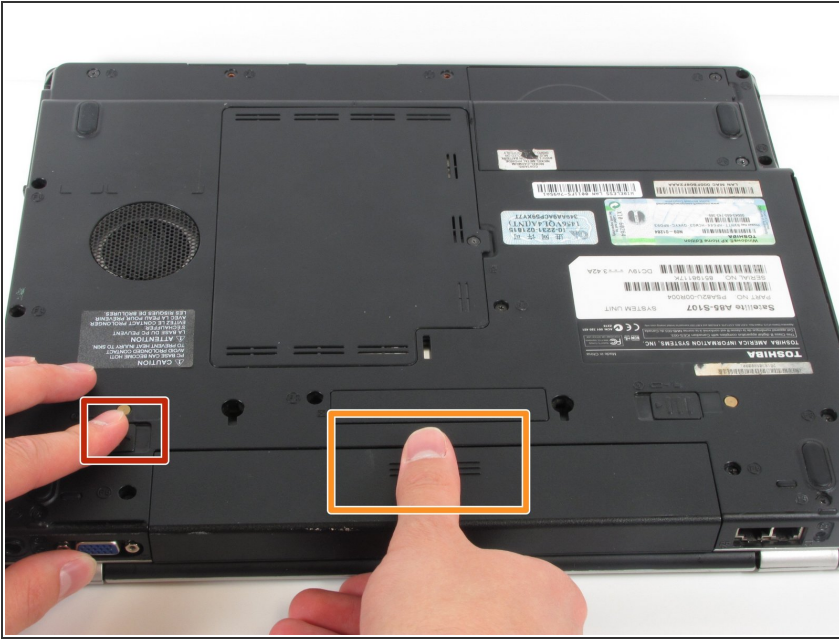
## Step 2



- Flip the laptop over and orient it such that the battery faces towards you and the front faces away from you as shown in the diagram.
- Unlock the battery by sliding the tab shown to the right.
- This tab will latch into place.

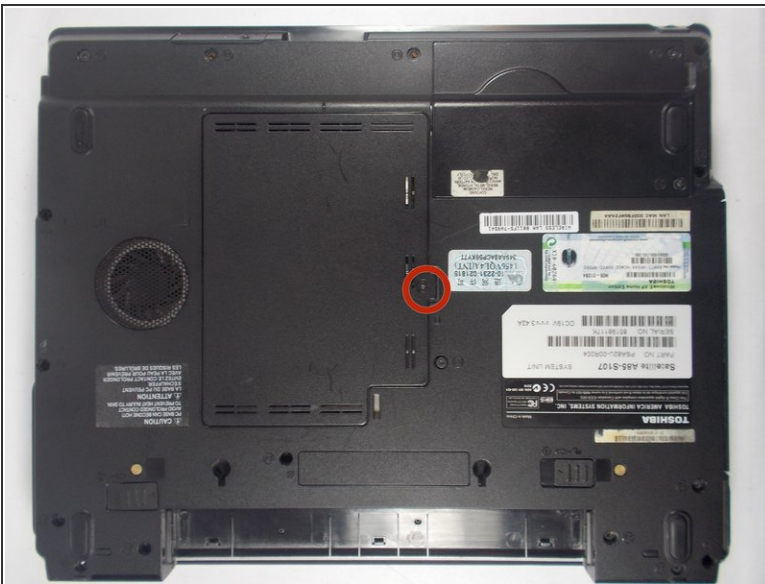


## Step 3



- Slide the tab shown to the left and remain holding it.
- ⓘ This tab does not lock into place like in the first step.
- Place your thumb on the grips of the battery as shown.
- While holding onto the grips, pull the battery towards you and away from the laptop.

## Step 4



- Loosen this 5 mm Phillips #0 screw found in the center of the lower case.
- ⓘ The screw will not come out completely, it will stay connected to the center plate.

## Step 5



- Remove the center plate by lifting it and sliding it to the right.

⚠ If the back panel is difficult to remove and feels like it is going to break, DO NOT force it. Check to confirm that the screw is loose before attempting again.

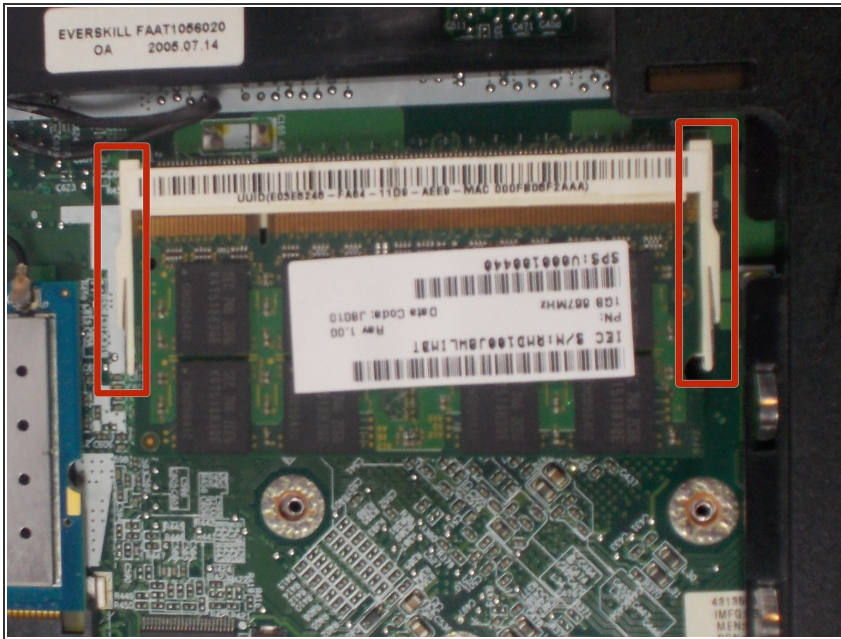
## Step 6



- The computer should be open with many of the internal components shown. You can now access the RAM, and wireless card.

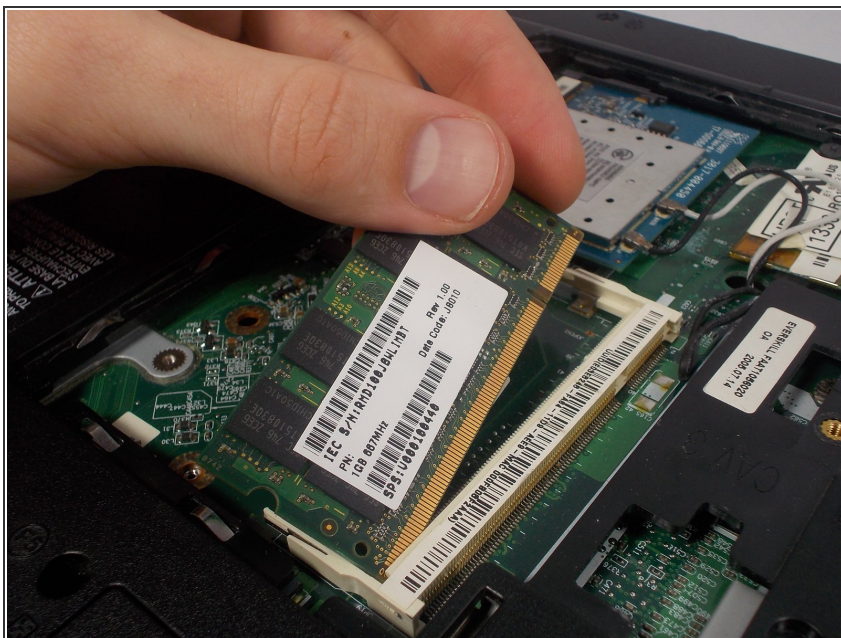


## Step 7 — RAM



- Push the two white tabs away from the RAM. The left side of the RAM should pop out of its holder.

## Step 8



- Pull the RAM out of the dock by lifting it from the left side and sliding it towards the left.

To reassemble your device, follow these instructions in reverse order.