



# Samsung Galaxy Note10+ Screen Replacement

Use this guide to remove or replace the screen...

Written By: Carsten Frauenheim



# INTRODUCTION

Use this guide to remove or replace the screen on your Samsung Galaxy Note10+.

Due to the Note10+'s design, you will have to remove the back panel in order to disconnect the screen cable.

Before you begin this procedure, be sure to have a set of replacement adhesives for both the back panel and the screen.



## TOOLS:

- [iOpener](#) (1)
- [iFixit Opening Picks \(Set of 6\)](#) (1)
- [Suction Handle](#) (1)
- [Spudger](#) (1)
- [Tweezers](#) (1)
- [Phillips #00 Screwdriver](#) (1)



## PARTS:

- [Galaxy Note10+ Screen](#) (1)
- [Galaxy Note10+ Display Adhesive](#) (1)

## Step 1 — Heat the rear cover



**⚠** Completely power off your phone before you begin disassembly.

- [Prepare an iOpener](#) and apply it to the left edge of the rear cover for one minute.
- ⓘ A hair dryer, heat gun, or hot plate may also be used, but be careful not to overheat the phone—the display and internal battery are both susceptible to heat damage.

## Step 2 — Insert an opening pick



- Apply a suction cup to the heated edge of the rear cover, as close to the edge as possible.
  - ❗ If your rear cover is badly cracked, covering it with a layer of clear packing tape may allow the suction cup to adhere. Alternatively, very strong tape may be used instead of the suction cup. If all else fails, you can superglue the suction cup to the broken cover.
- Pull up on the suction cup with strong, steady force to create a gap between the rear cover and the frame.
  - ❗ Depending on the age of your phone, this may be difficult. If you are having trouble, apply more heat to the edge and try again.
- Insert the point of an opening pick into the gap.

### Step 3 — Begin to slice the adhesive



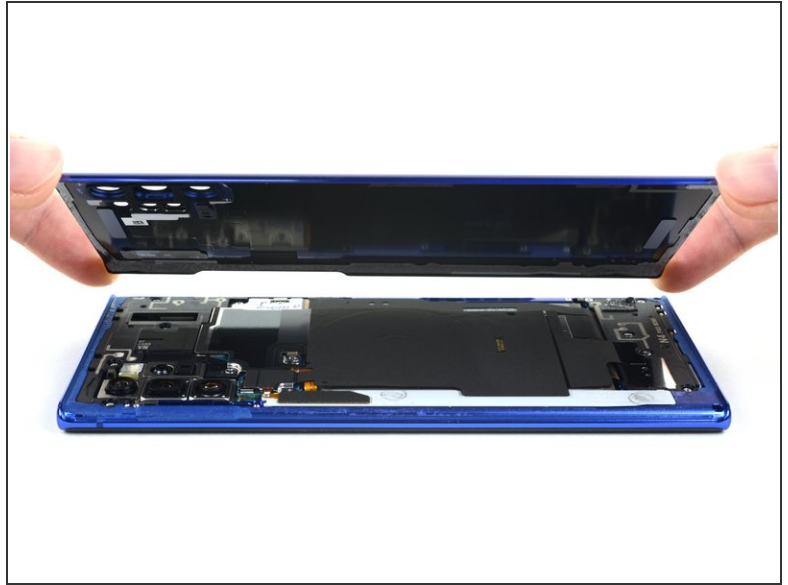
- Slide the opening pick along the left edge towards the bottom left corner to slice the adhesive.  
**⚠ Don't insert the opening pick more than halfway into the phone or you risk damaging internal components.**
- Leave the pick inserted in the bottom left corner to prevent the adhesive from re-sealing.

### Step 4 — Slice around the perimeter of the phone



- Repeat the previous heating and cutting procedure for the remaining three sides of the phone.
  - Leave an opening pick on each side as you continue to the next to prevent the adhesive from resealing.
- i** The rear cover will begin to separate from the phone as you finish all sides of the phone.

## Step 5 — Lift off the rear cover



- Lift the rear cover straight up to remove it.

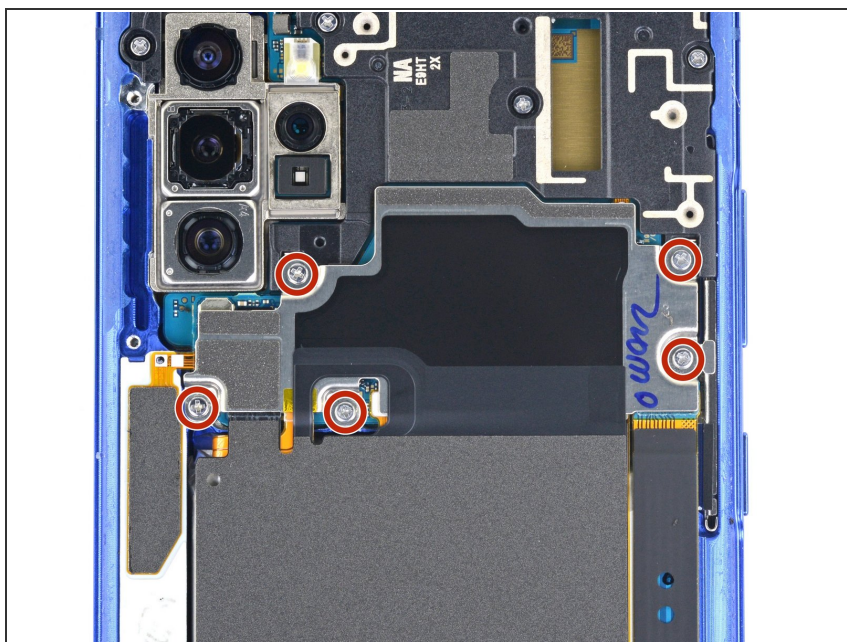
✦ [Follow this guide](#) to reinstall the rear cover and replace the adhesive.

ⓘ Be sure to turn on your device and test your repair before installing new adhesive and resealing the device.

✦ If you're using Tesa tape to reattach components, [follow this guide](#).

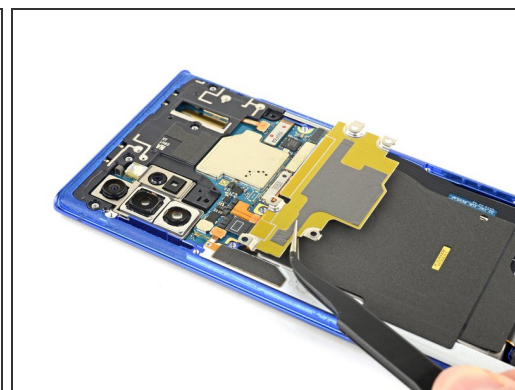
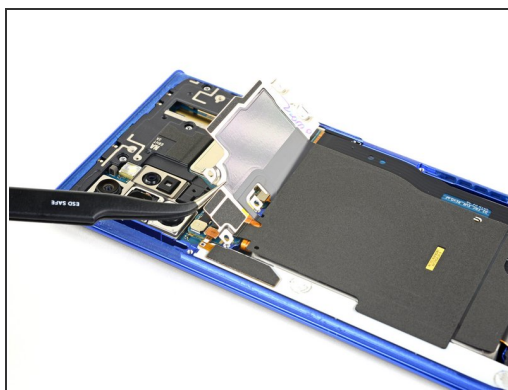
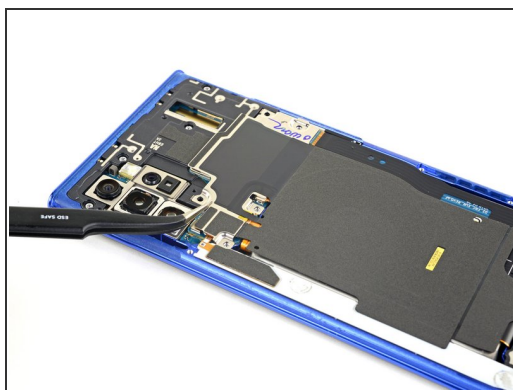


## Step 6 — Lift up the metal cover



- Use a Phillips screwdriver to remove the five 4 mm screws securing the wireless charging coil.

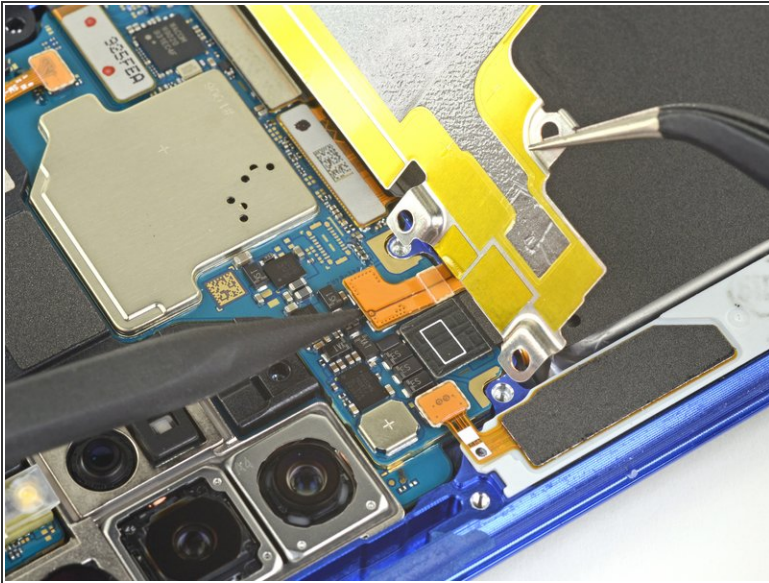
## Step 7



- Use a pair of tweezers to lift up and flip back the metal shield covering the battery connector.

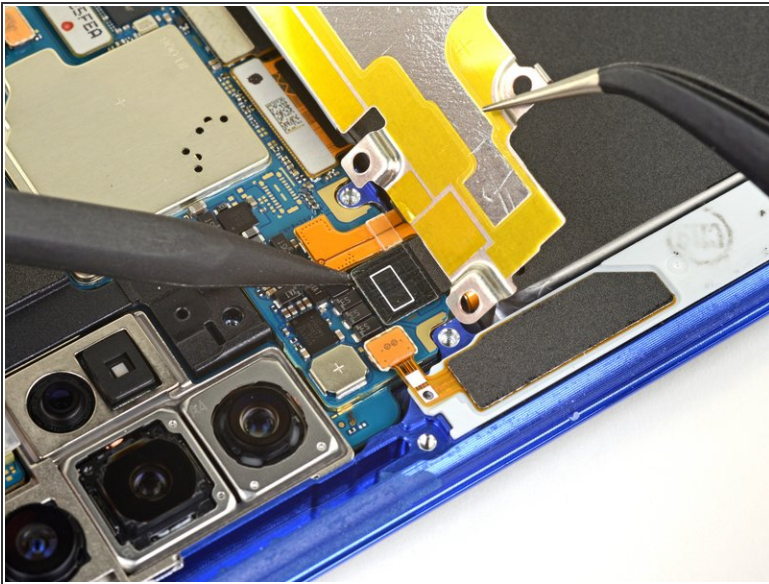


## Step 8 — Disconnect the battery



- While holding the metal shield up and out of the way, use the pointed end of a spudger to pry up the battery connector to disconnect it.

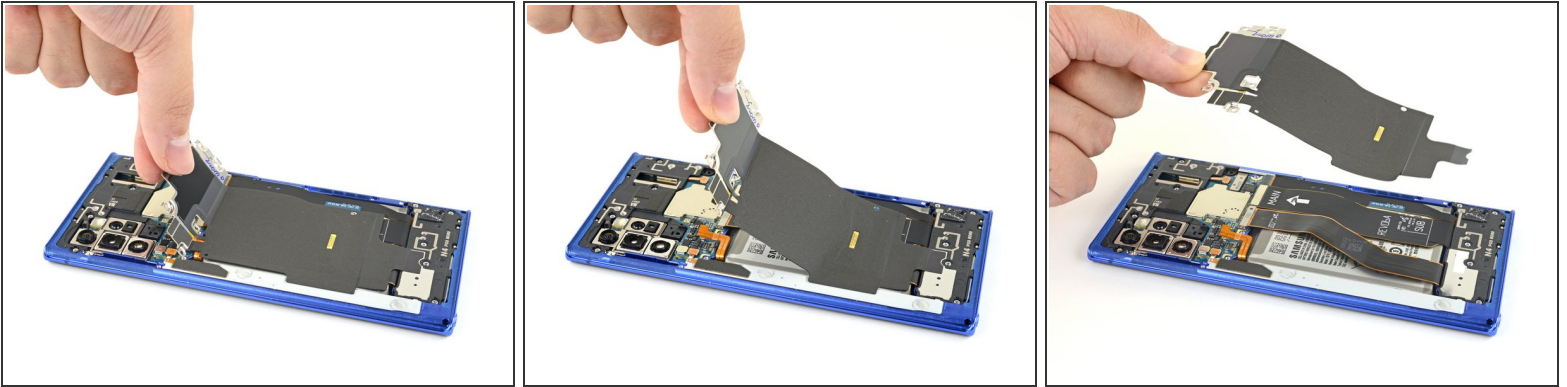
## Step 9 — Disconnect the wireless charging coil



- Use the pointed end of a spudger to disconnect the wireless charging coil connector from the motherboard.



## Step 10 — Remove the wireless charging coil



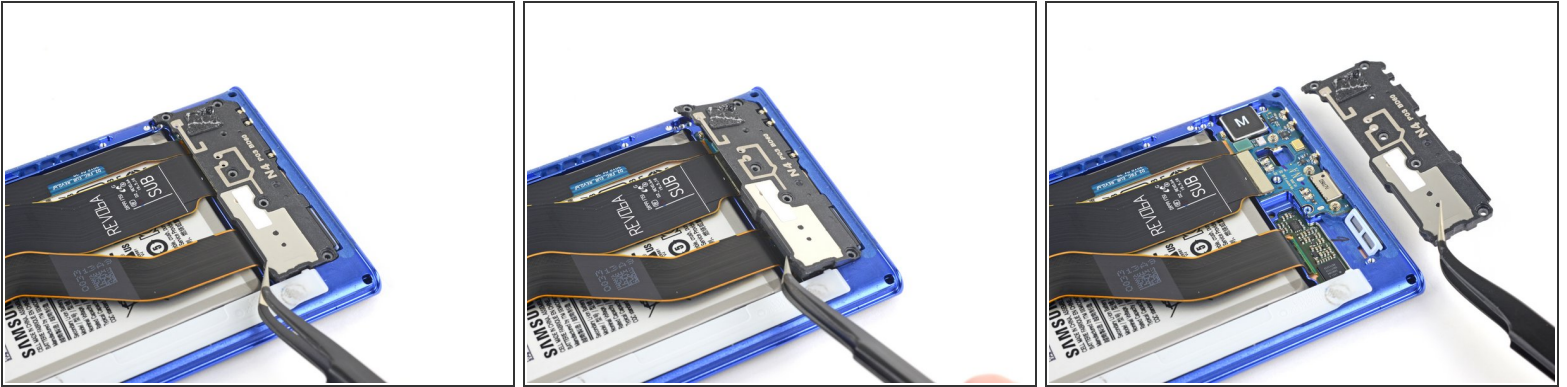
- Tilt the metal shielding up so you can grip it with your fingers.
- Peel the wireless charging coil up and away from the device.
  - ❗ The wireless charging coil is secured to the phone with some light adhesive.
- Remove the wireless charging coil.

## Step 11 — Remove the loudspeaker screws



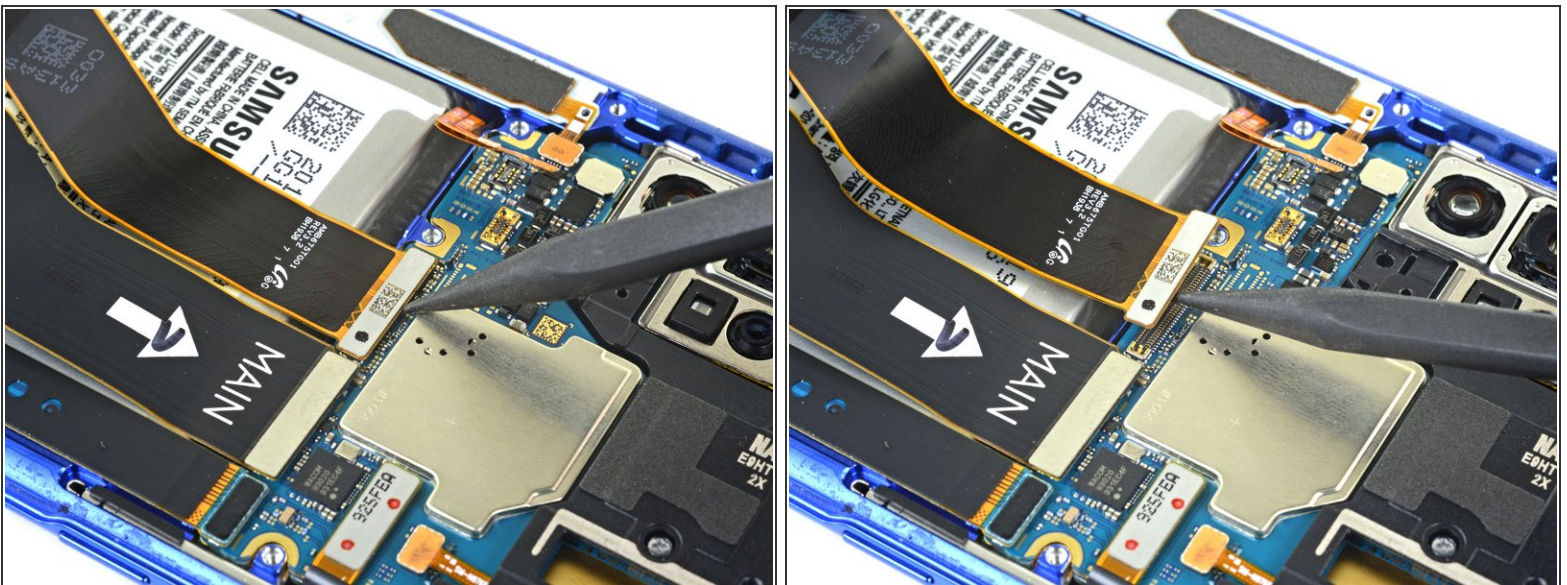
- Use a Phillips screwdriver to remove the five 4 mm screws securing the loudspeaker.

## Step 12 — Remove the loudspeaker



- Use a pair of tweezers to remove the loudspeaker.

## Step 13 — Disconnect the display cable



- Use the pointed end of a spudger to disconnect the display cable from the motherboard.
- ✦ To re-attach [press connectors](#) like this one, carefully align and press down on one side until it clicks into place, then repeat on the other side. Do not press down on the middle. If the connector is misaligned, the pins can bend, causing permanent damage.



## Step 14 — Disconnect the touch layer



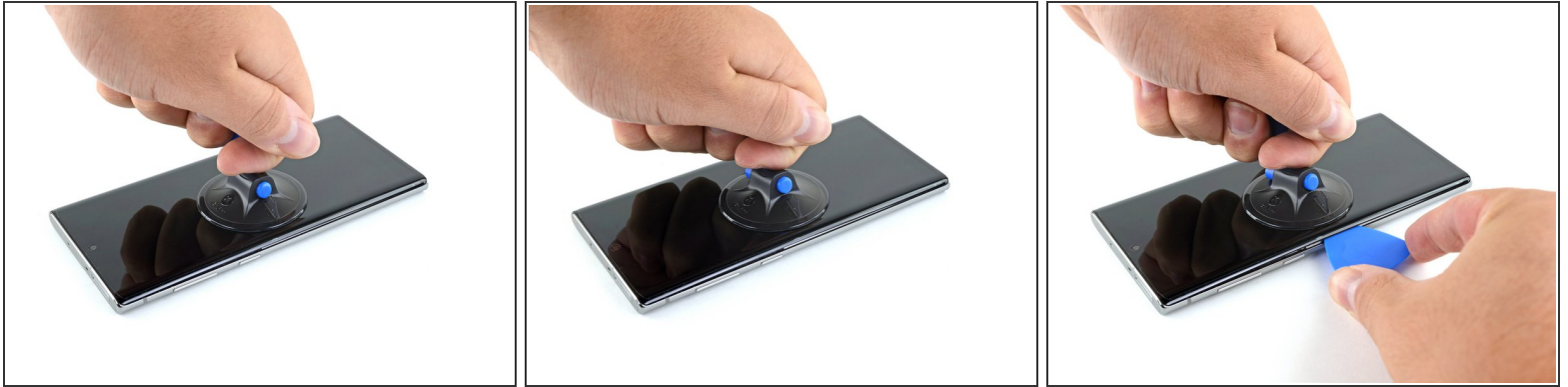
- Use the pointed end of a spudger to disconnect the S-Pen touch layer cable connector from the motherboard.

## Step 15 — Loosen the adhesive



- [Prepare an iOpener](#) and apply it to the left edge of the display for one minute.
- ⓘ A hair dryer, heat gun, or hot plate may also be used, but be careful not to overheat the phone—the display and internal battery are both susceptible to heat damage.

## Step 16 — Slice the left side adhesive



- Apply a suction cup to the heated edge of the display, as close to the edge as possible.
  - ❗ If your screen is badly cracked, covering it with a layer of clear packing tape may allow the suction cup to adhere. Alternatively, very strong tape may be used instead of the suction cup. If all else fails, you can superglue the suction cup to the broken display.
- Pull up on the suction cup with strong, steady force to create a gap between the display and the frame.
  - ❗ Depending on the age of your phone, this may be difficult. If you are having trouble, apply more heat to the edge and try again.
- Insert the point of an opening pick into the gap.

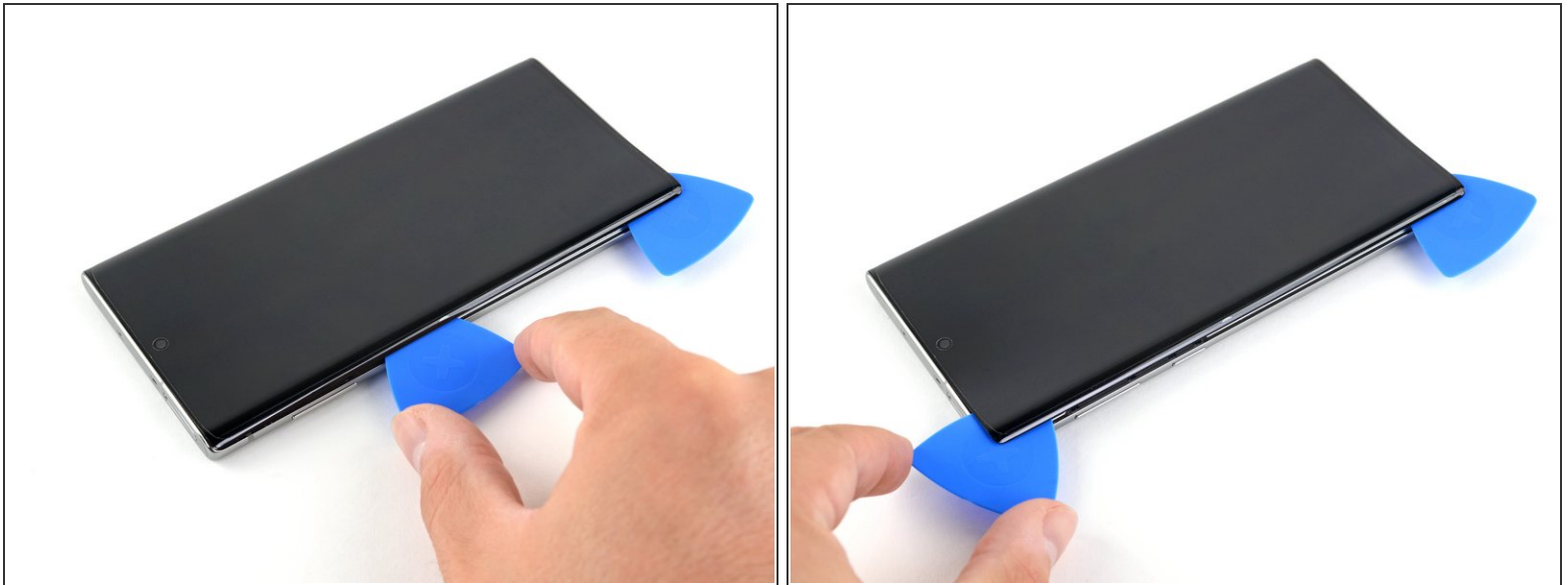


## Step 17



- Slide the opening pick along the left side towards the bottom left corner to slice the adhesive.  
**⚠ Do not insert the opening pick more than halfway into the phone or you risk damaging internal components.**
- Leave the pick inserted in the bottom left corner to prevent the adhesive from re-sealing.

## Step 18



- Insert a second opening pick and slide it along the left side towards the top left corner to slice the adhesive.
- Leave the pick inserted in the top left corner to prevent the adhesive from re-sealing.

## Step 19 — Slice the bottom side adhesive



- Prepare an iOpener and apply it to the bottom edge of the phone for one minute.

## Step 20



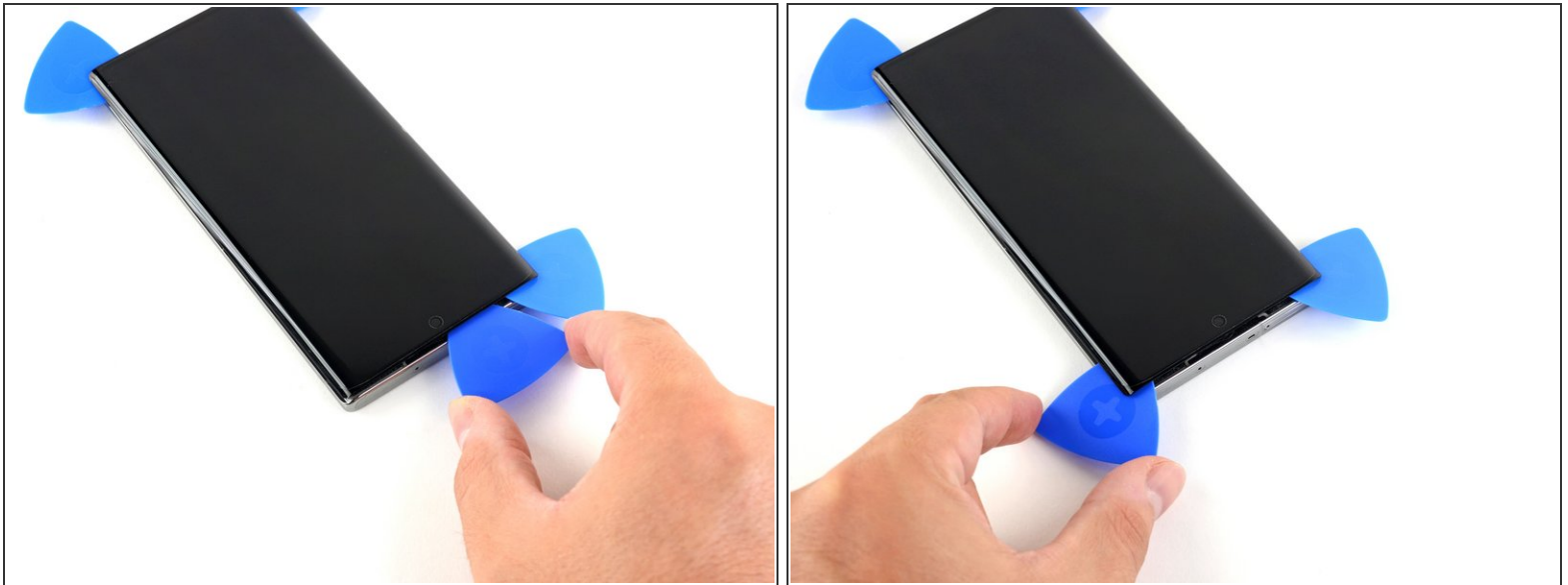
- Insert a third opening pick into the gap on the bottom edge of the phone.
- Slide the opening pick to the bottom right corner, slicing the adhesive.
- Leave the pick inserted in the bottom right corner to prevent the adhesive from re-sealing.

## Step 21 — Slice the top side adhesive



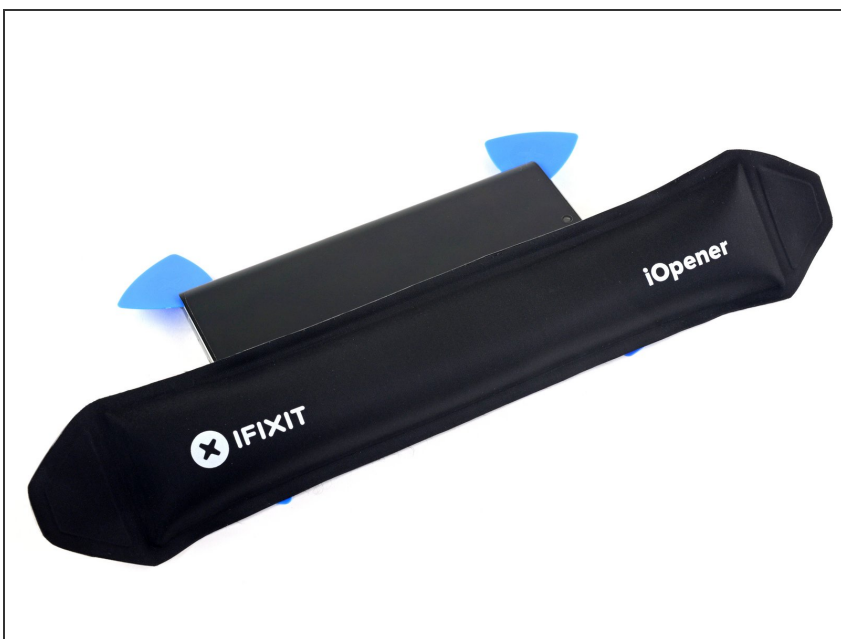
- Prepare an iOpener and apply it to the top edge of the phone for one minute.

## Step 22



- Insert a fourth opening pick into the gap on the top edge of the phone.
- Slide the opening pick to the top right corner, slicing the adhesive.
- Leave the pick inserted in the top right corner to prevent the adhesive from re-sealing.

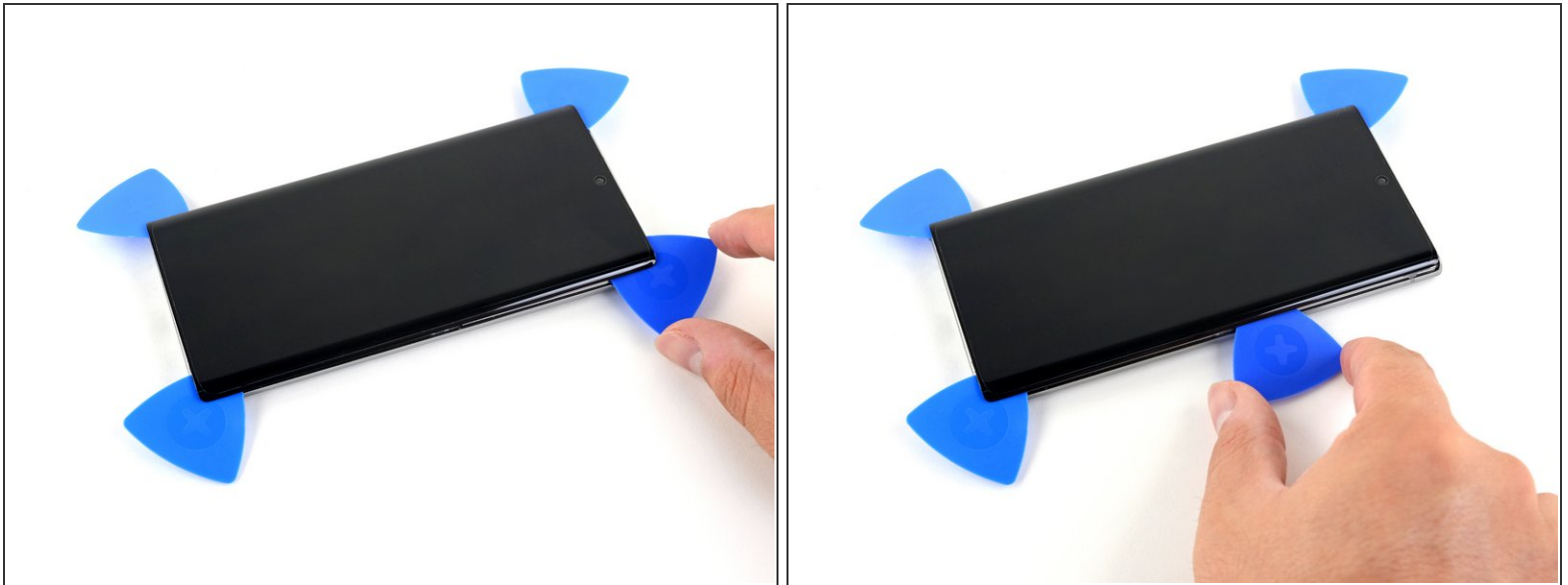
## Step 23 — Slice the right side adhesive



- Prepare an iOpener and apply it to the right edge of the phone for one minute.

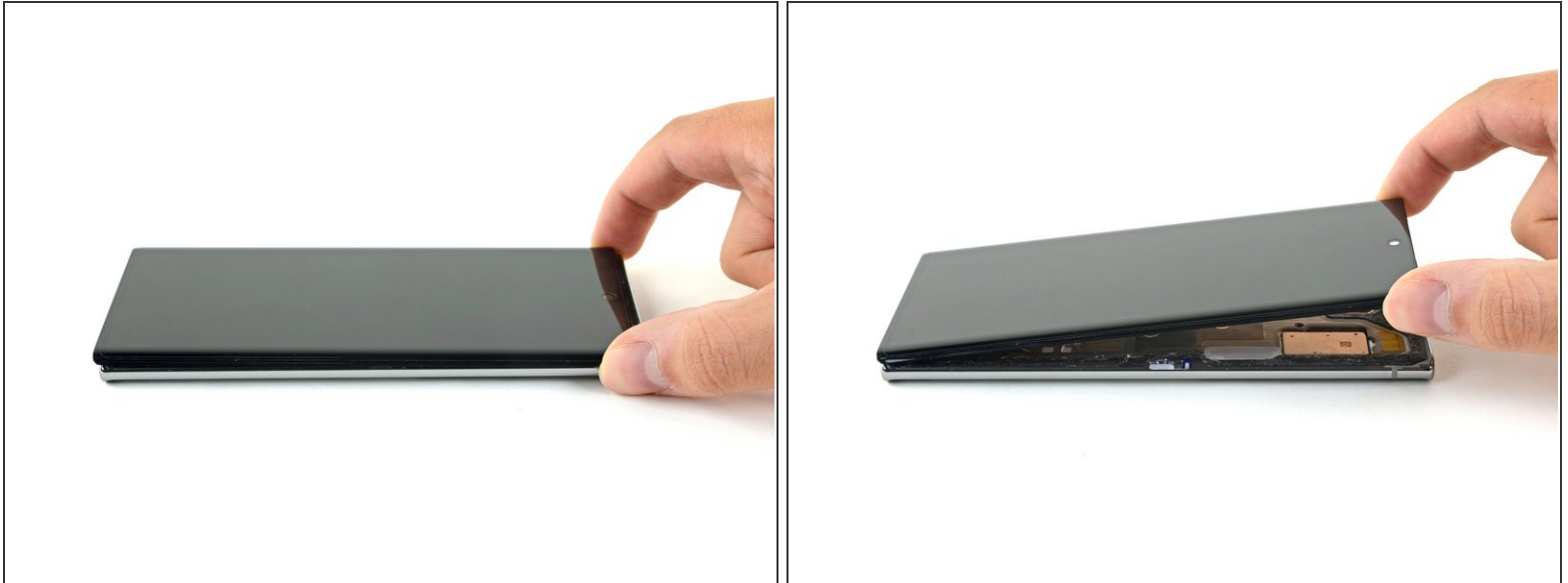


## Step 24



- Slide the opening pick from the top right corner down towards the bottom right corner of the phone to slice the adhesive.
- ⓘ The display will begin to separate from the phone as you get closer to the bottom edge.
- Slide an opening pick back and forth around the entire perimeter of the phone to release any missed adhesive, reheating if you find any extra-stubborn adhesive.

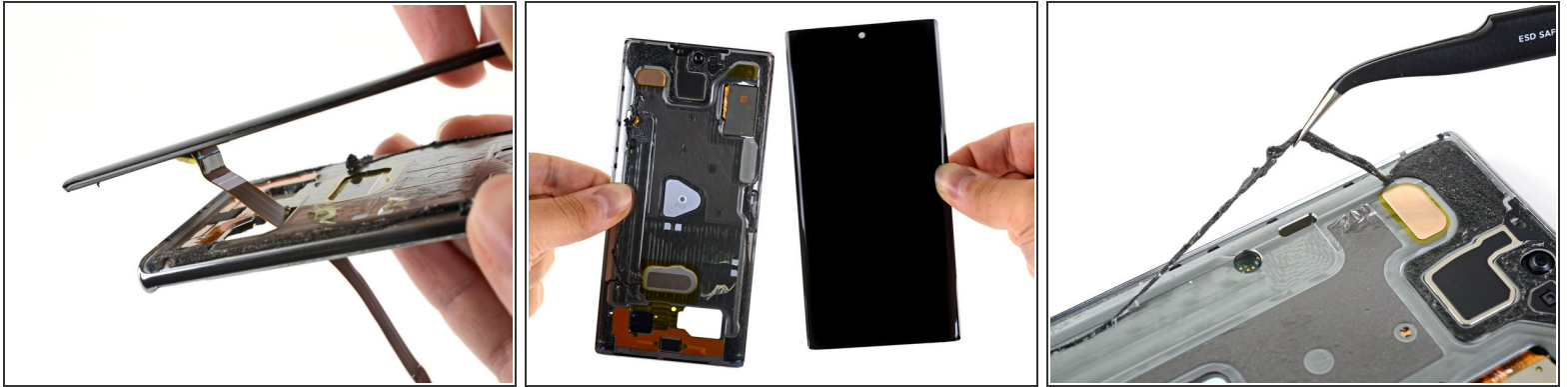
## Step 25 — Remove the screen



**⚠ Don't try to completely remove the screen yet, as there are still some cables routed through the phone's frame.**

- Lift the screen up from the top edge of the phone.
- ⓘ Don't lift the screen higher than about a 15° angle above the device.

## Step 26



- Thread the display and S-Pen touch layer cables through their cutouts on the phone frame.
  - Remove the display.
  - Remove any leftover adhesive before installing a new display.
- ☒ [Follow this guide](#) for instructions on how to apply adhesive to the replacement screen.
- Be sure to test your repairs before installing new adhesives.

Compare your new replacement part to the original part—you may need to transfer remaining components or remove adhesive backings from the new part before installing.

**To reassemble your device, follow the above steps in reverse order.**

Take your e-waste to an [R2 or e-Stewards certified recycler](#).

Repair didn't go as planned? Try some [basic troubleshooting](#), or ask our [Answers community](#) for help.