



# Universal Ceiling Fan Remote Replacement

This guide shows how to replace a ceiling fan remote control unit in the base of a Hunter ceiling fan.

Written By: Chris Mathe



## INTRODUCTION

As homeowners, we are all familiar with appliances and devices that quit working due to accidents or old age. Ceiling fan remotes are no exception, and when these devices quit working, we immediately find ourselves at the hardware store looking for a replacement.

Unfortunately, universal ceiling fan remotes come in kits that require an installation of a wireless receiver at the base of a ceiling fan. Working with electrical fixtures can be intimidating for beginners, and this instruction guide was created to show how to replace the wireless receiver in a ceiling fan controlled by one wall switch.

Before using this guide, make sure the following conditions are met:

- Confirm your ceiling fan is compatible with a universal remote kit. Ceiling fans with built-in integrated remote controls are not compatible.
- Confirm the base of your ceiling fan has a minimum diameter of 16 cm.
- Confirm your ceiling fan is supplied with AC 110\120V, 60Hz.

This instruction guide also assumes you are familiar with turning off the electricity at your breaker box and know [how to test voltage](#) with a multimeter.



### TOOLS:

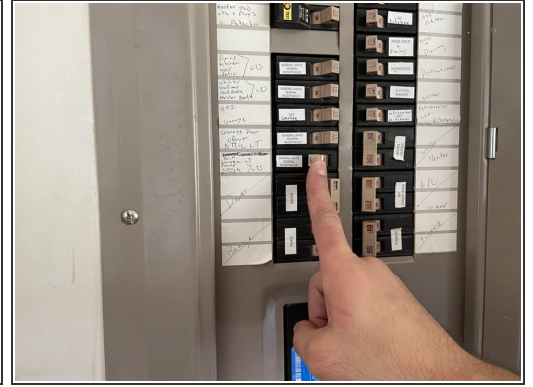
- [Phillips #2 Screwdriver](#) (1)
- [Cutting Plier](#) (1)
- [Black Electrical Tape](#) (1)
- [Ladder](#) (1)
- [Multimeter](#) (1)
- [Wire Stripping/Crimping Tool](#) (1)



### PARTS:

- [Harbor Breeze Universal Ceiling Fan Remote](#) (1)

## Step 1 — Universal Ceiling Fan Remote



- Turn off the ceiling fan switch.
- Turn off the electricity for the fan at the breaker box.

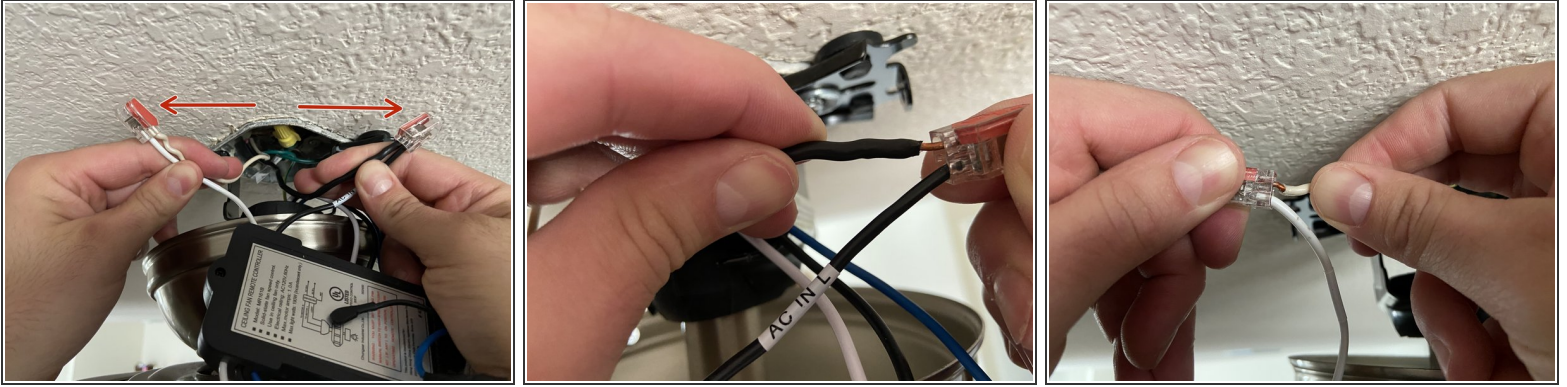
## Step 2



- Unscrew and remove the ceiling fan blades.
  - Unscrew and remove the ceiling fan canopy from the ceiling bracket.
  - Lower the canopy and rest it on the ceiling fan motor.
  - Gently remove the receiver from the ceiling bracket.
- ⚠ Be careful not to snag or rip any wires, as the receiver will still be wired in to the fan's electronics.

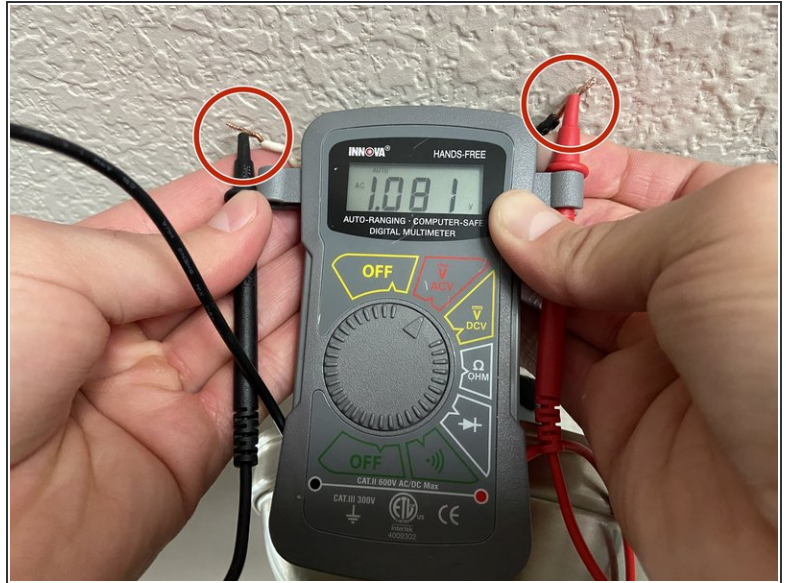
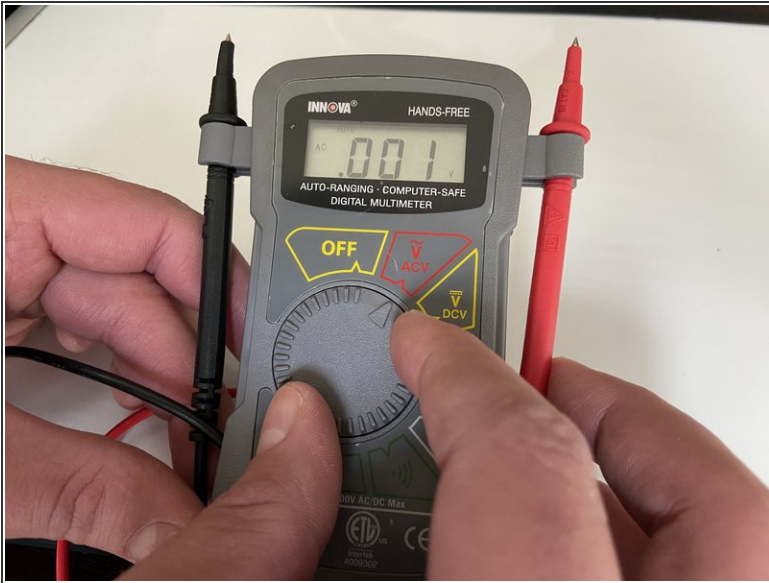


## Step 3



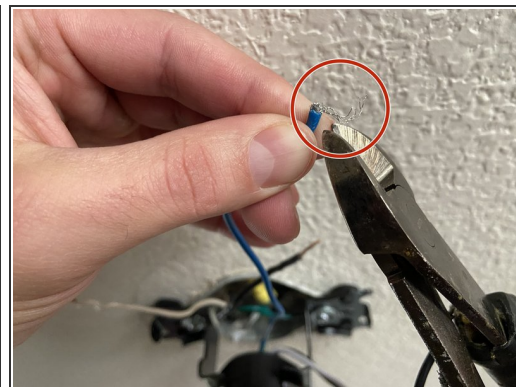
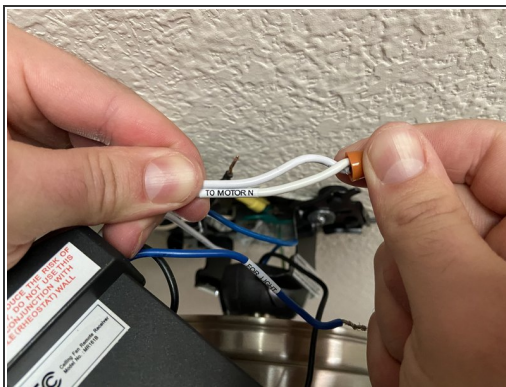
- Before disconnecting any wires, pull apart the black (hot/power) supply wire away from the white (neutral) supply wire.
- ⓘ Supply wires are fed directly from the ceiling junction box. If two or more (hot/power) supply wires are connected to your fan, consult a qualified electrician. Multiple supply wires indicate more than one wall switch controls your ceiling fan and complicate the wiring. This guide does not support wire configurations with multiple wall switches.
- Carefully disconnect each wire connector from the supply wires of the old receiver.

## Step 4



- Set your digital multimeter to detect AC voltage.
- ⓘ If your multimeter has advanced options, ensure the dial is turned to a minimum ACV 200 setting. If you are unsure how to use a multimeter, consult the manufacturer's instructions or read this [guide](#).
- Test the black (hot/power) and white (neutral) supply wires for voltage and verify no electricity is detected from the ceiling outlet.

## Step 5



- Disconnect any remaining wires from the old receiver.
- Inspect each wire for damaged or frayed ends.
- ❗ If any wires are damaged, proceed to [Step 6](#). Otherwise, skip to [Step 7](#).

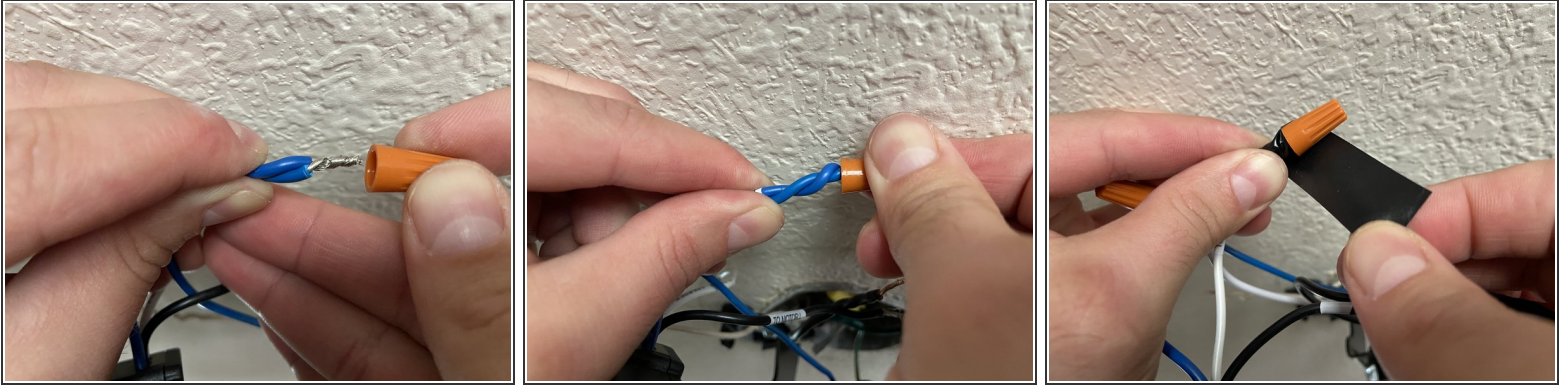
## Step 6



- Cut the end of the damaged wire with a pair of wire cutters.
- Use a pair of wire strippers to remove 2 cm of the wire casing.
- Repeat this step as needed until all damaged wires are repaired.



## Step 7



- Use the following color-coded wires to connect the ceiling fan to the replacement wireless receiver:
    - Connect the blue wire labeled **lighting** from the receiver to the blue ceiling fan wire.
    - Connect the black wire labeled **motor/L** from the receiver to the black ceiling fan wire.
    - Connect the white wire labeled **motor/N** from the receiver to the white ceiling fan wire.
  - Gently tug each wire connection and make sure it's properly terminated with the twist on connectors.
  - Cut a 15 cm piece of electrical tape and wrap it around the end of each wire.
- ✦ Attach electrical tape at the base of each wire first. Then finish wrapping tape around the wire connector. This will ensure wires do not come loose when they are tucked into the junction box.

## Step 8



- Connect the black wire labeled **AC\_IN L** from the receiver to the black (hot/power) supply wire from the ceiling junction box.
- Connect the white wire labeled **AC\_IN N** from the receiver to the white (neutral) supply wire from the ceiling junction box.
- Gently tug each wire to make sure the connection is properly terminated.
- Wrap each wire connection with 15 cm of electrical tape.



## Step 9



- Firmly tuck in the black (hot/power) and white (neutral) supply wires into the ceiling junction box.
  - Gently slide in the receiver while tucking in the blue, white, and black ceiling fan wires above the receiver.
- ⚠ While pushing in the receiver, be careful not to damage the antenna.

## Step 10



- Reattach the ceiling fan canopy base.
- Reattach the ceiling fan blades.
- Turn on the electricity at the breaker box.

Your new ceiling fan remote should be fully functional!