



Lenovo IdeaPad 330S Wireless Lan Card Replacement

The WLAN card enables your laptop to access...

Written By: Ilia Tocheny



INTRODUCTION

The WLAN card enables your laptop to access wireless internet networks. This guide shows you how to replace a faulty WLAN card or if you want upgrade to a faster WLAN card I recommend on an Intel AX200 card.

The battery for this device is not easily accessible and cannot be easily removed. Before you begin your replacement, be sure to disconnect the laptop from any power source.



TOOLS:

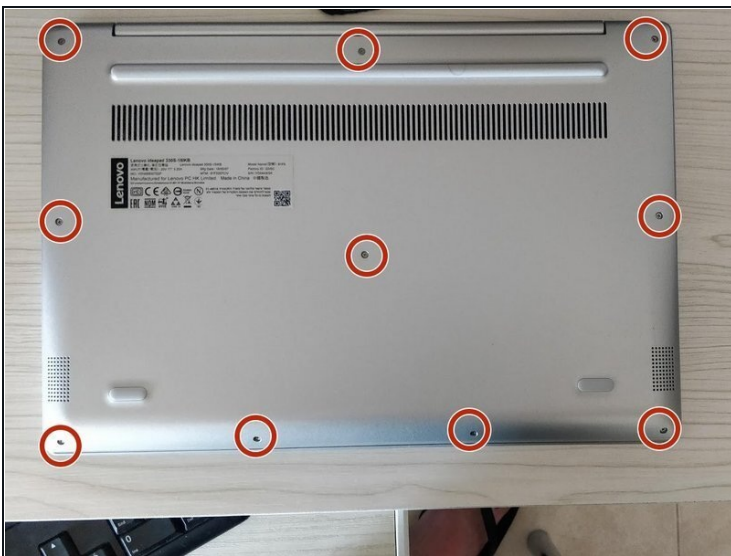
[2.5 mm Flathead Screwdriver](#) (1)
[Phillips #00 Screwdriver](#) (1)
[Spudger](#) (1)
[iFixit Opening Tool](#) (1)
[High-Strength Threadlocker](#) (1)



PARTS:

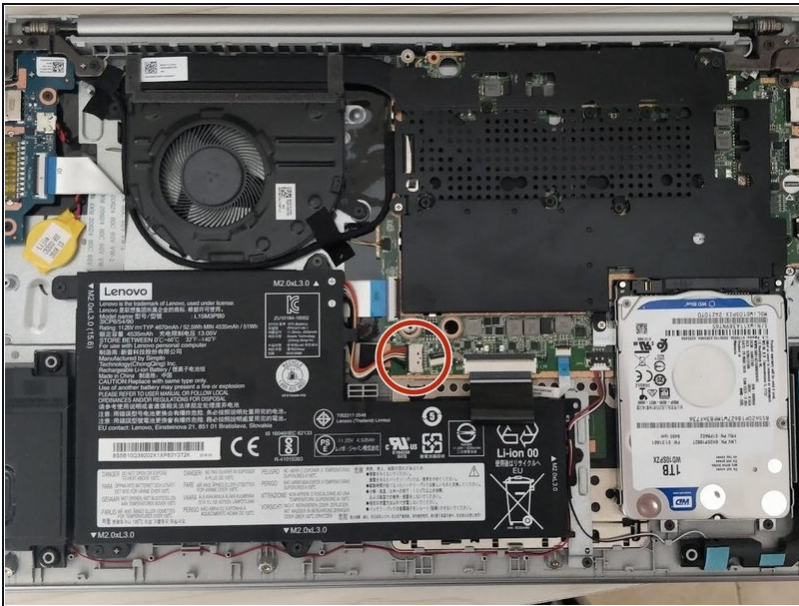
[Lenovo 01AX710 Wireless Card](#) (1)

Step 1 — Removing Bottom Case



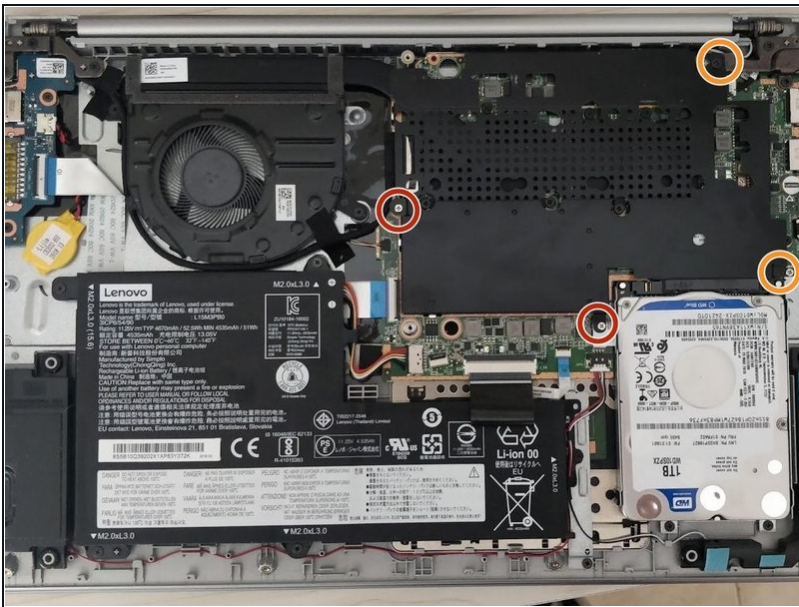
- **Turn the device off.**
- Remove the 10 screws as shown in picture.
- Using a pry tool , remove the bottom case.

Step 2 — Disconnecting Battery



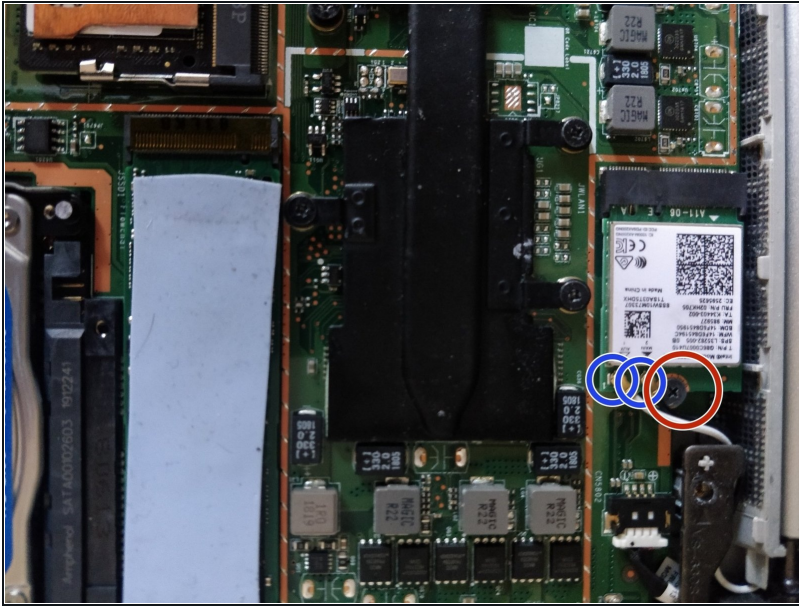
- Using a spudger gently push the plastic connector to the left in order to disconnect the battery.

Step 3 — Removing guard shield



- Remove the three 00# screws.
- Remove the 2.5 mm screw.
- Gently pry the shield.

Step 4 — Removing Wireless Card



- Before removing the screw (marked in red circle) remove the two antenna cables using the spudger.
- Remove the screw.
- The wireless card will lift, remove it.
- Install the new wireless card.

To reassemble your device, follow these instructions in reverse order.