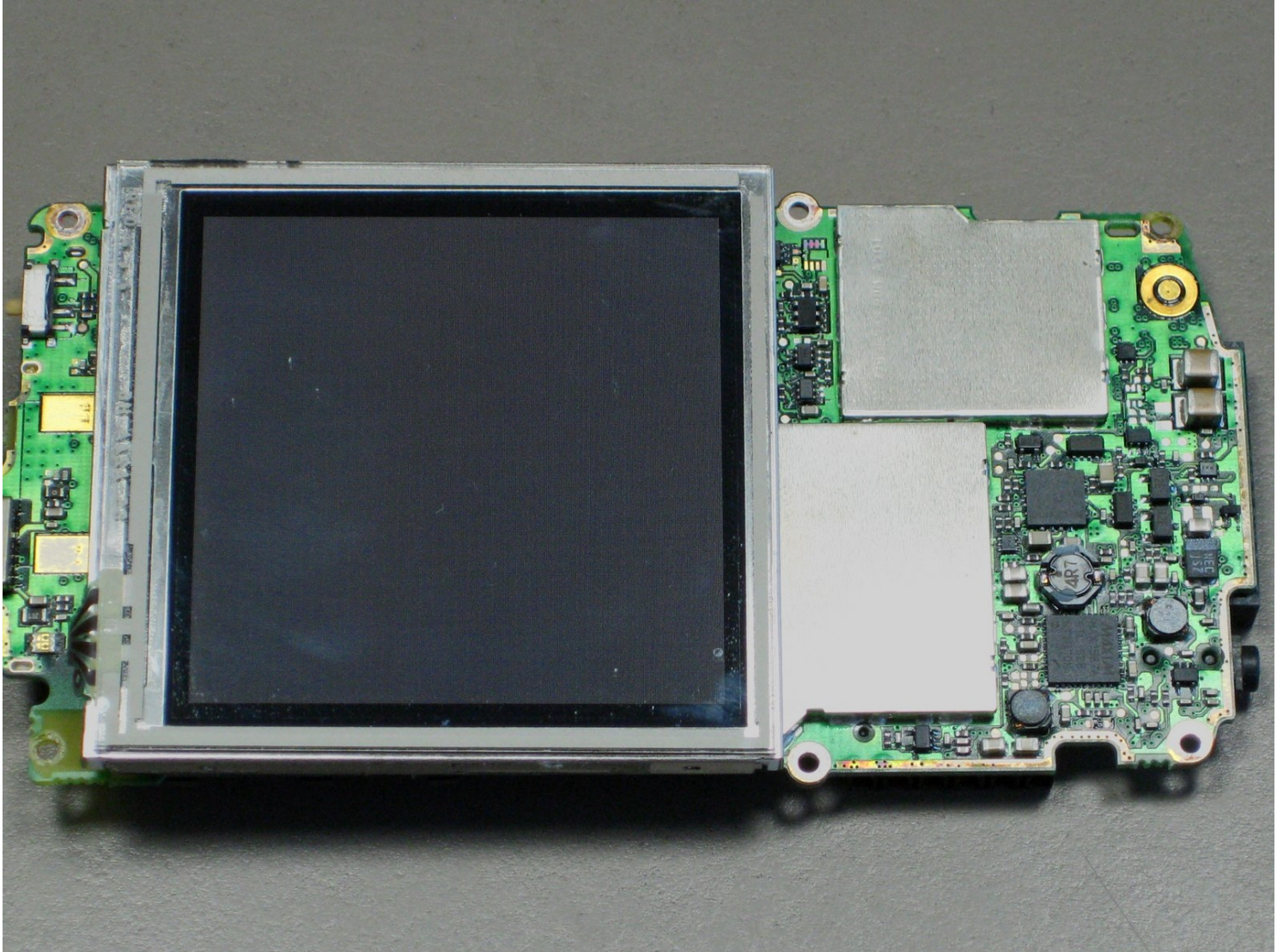




Palm Treo 650 LCD Screen Replacement

This is a repair guide to access and replace...

Written By: cgood



INTRODUCTION

This is a repair guide to access and replace the LCD screen.

TOOLS:

[Phillips #00 Screwdriver](#) (1)

[Spudger](#) (1)

[T5 Torx Screwdriver](#) (1)

[iFixit Opening Tool](#) (1)

Step 1 — Battery and Stylus



- Position the phone so the screen faces down.
- Remove the stylus found on the back of the phone.

Step 2



- Hold the button in the middle of the phone's back to remove the battery cover.
- Slide the cover down to remove it, and set the cover aside.

Step 3



- Lift the edge of the battery, separating contact points, and pull out as pictured.

Step 4 — Case



- Remove the round, rubber cover to expose a screw that will be removed in the next step.

Step 5



- Remove the six 6.9 mm screws as pictured with a T5 Torx screwdriver.
- Remove the single 9.8 mm screw next to the antenna on the back plate, using a Phillips #00 screwdriver.

Step 6



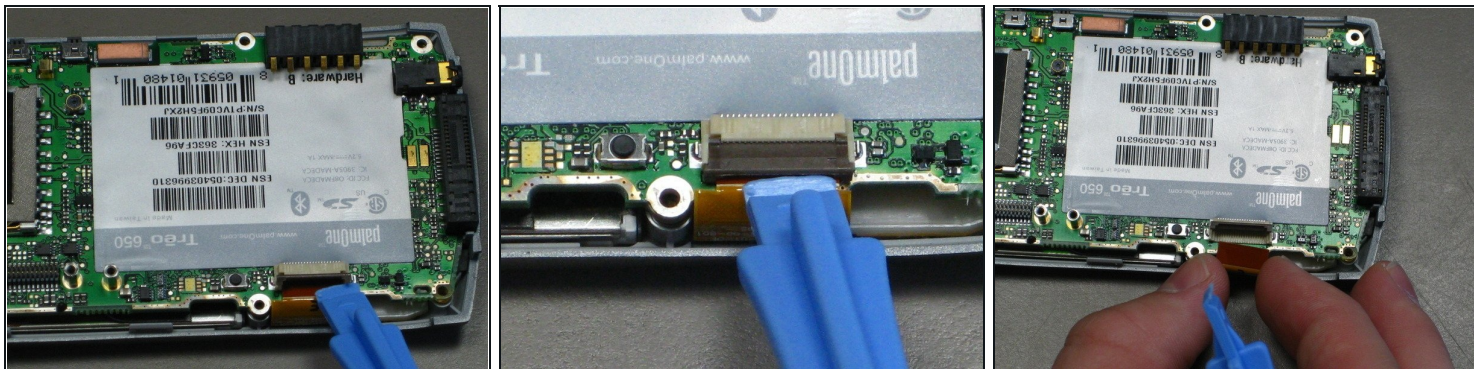
- Pull the antenna outward to remove the antenna from the body of the phone.

Step 7



- Pry the back cover off using an iFixit opening tool.
- ⓘ Several small clips on the inside attach to the back cover.

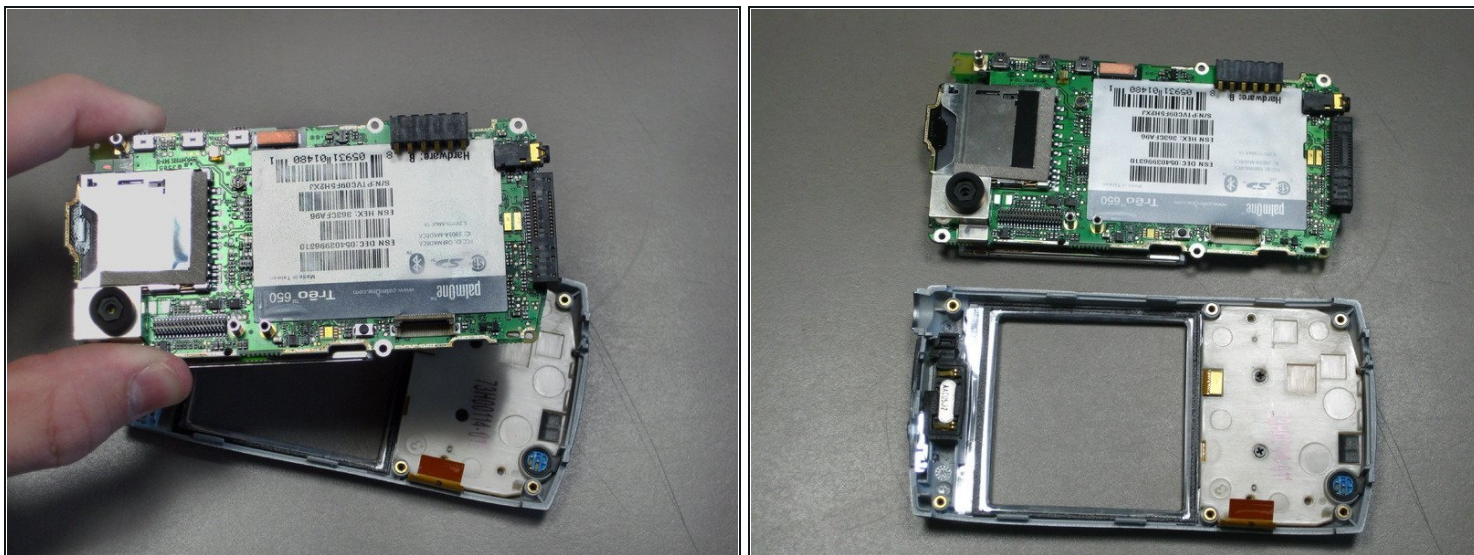
Step 8 — Motherboard



⚠ Disconnect the ribbon cable before removing the motherboard.

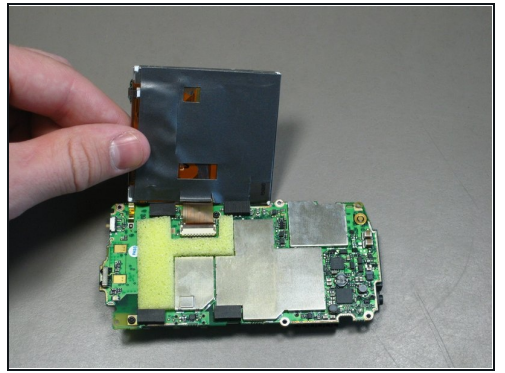
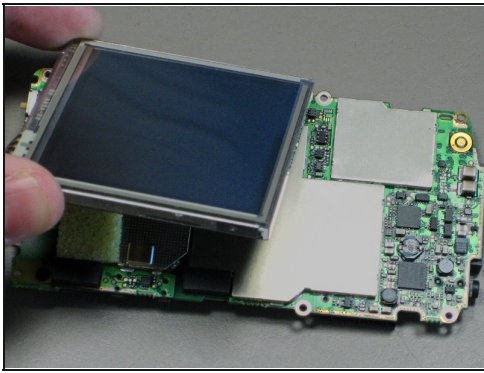
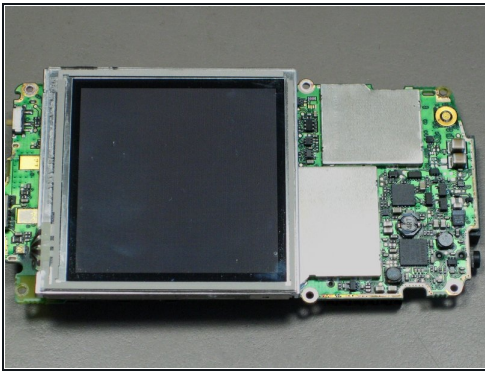
- Unclip the gray tab.
- Pull out the orange ribbon cable.

Step 9



- Pull off the motherboard.

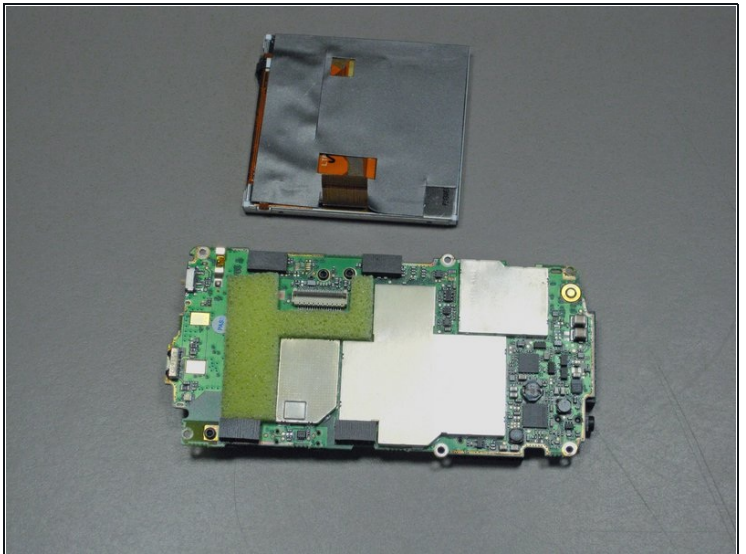
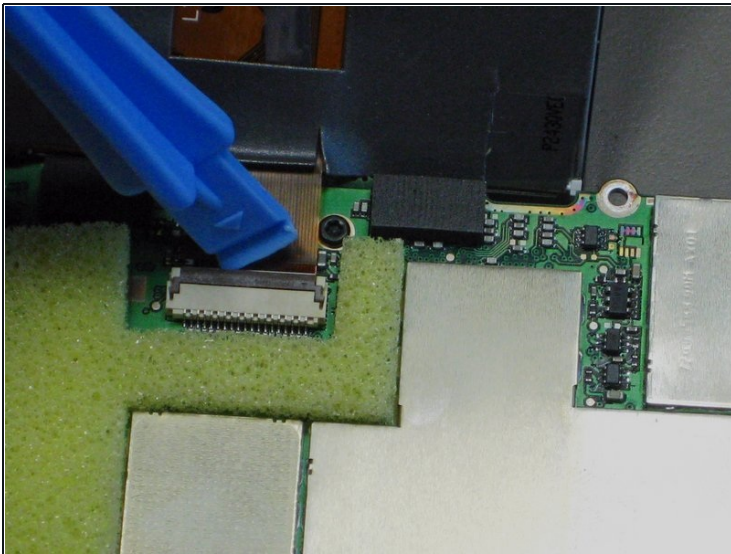
Step 10 — LCD Screen



- Lift up the LCD screen so that the ribbon strip connecting it to the motherboard can be accessed.

⚠ Only lift the screen high enough to access the ribbon cable.

Step 11



- Unclip the gray tab.
- Pull out the orange ribbon strip.
- Remove the LCD screen.

To reassemble your device, follow these instructions in reverse order.