



Sink Faucet Water Supply Line Replacement

If you are having issues with a water leak...

Written By: Logan Wilson



INTRODUCTION

If you are having issues with a water leak under your sink, but it is not due to your plumbing connections or the faucet itself, then you may have an issue with your water supply lines. These supply lines are the connections between your water valves and your sink faucet. Over time, these supply lines can wear out, especially around the connections.

This guide will show you everything you need to do to replace your water supply lines in the most efficient way possible in an easy to follow, step-by-step format. Replacing water supply lines does not require any special skills to complete, and should not take any more than an hour, even if it is your first time doing this replacement!



TOOLS:

- [Adjustable Wrench](#) (1)
 - [Teflon tape](#) (1)
 - [Cup](#) (1)
-

Step 1 — Water Supply Line



- Clear the cabinet of any items to provide adequate workspace.
- Place a towel down under the supply lines to absorb any dripping water.

Step 2



- Rotate the valve to shut off the water supply to the faucet.
- ❗ A valve is typically considered to be "shut off" when it is perpendicular to the supply line itself. The third photo shows a completely shut off valve.

Step 3



- Begin unfastening the water supply line, starting with the top of the line attached to the faucet.
- Place the crescent wrench on the fastening nut, and rotate until the supply line detaches completely from the faucet.

Step 4



- Now that the top of the supply line is detached, hold it upright as there will still be some water left in the line from before the valve was shut off.
- Pour the remaining water from the supply line into a cup to prevent water from spilling elsewhere in the future steps.

Step 5



- Adjust the crescent wrench to fit the bottom nut of the water supply line.
- Rotate the nut until the water supply line is completely detached from the water supply valve.

Step 6



- Wipe off the connections where the water supply line was previously attached.
- Completely peel the old Teflon tape from both the top and bottom connections if there is any.


Step 7



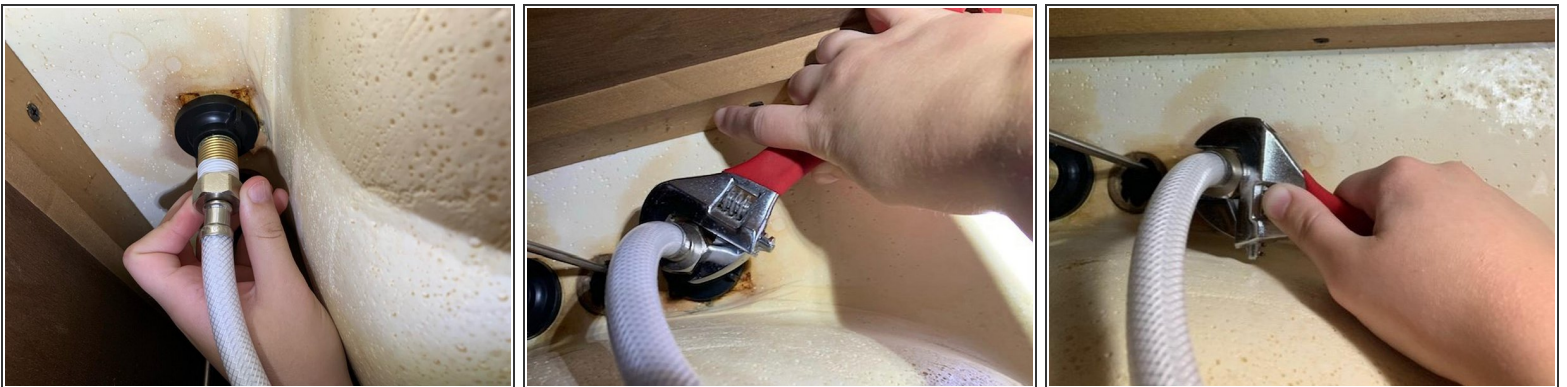
- Wrap the threads of both the top and bottom connections with new Teflon tape.
 - After 2-4 wraps of Teflon tape, tear the tape and secure to the threads.
- i** Teflon tape is added to the threads as an effort to reduce the likelihood of leaking at the threads.

Step 8



- Take the new water supply line and connect the bottom fastener first. The connection should be started by hand.
 - After tightening the new water supply line by hand, use the crescent wrench from before to tighten the nut more.
-  A tighter connection means less likelihood of leaks.

Step 9



- Place the top portion of the new water supply line to the top fastener. Start reconnecting it by screwing it on by hand.
- Tighten the connection with the crescent wrench to decrease the likelihood of a future leak.

Step 10



- Once the new water supply line is placed and properly fastened, the water valve can be switched back on.
- Grab the water valve and rotate it to the open position, which is typically in parallel to the water line, in contrast to earlier where a valve in the off position was perpendicular to the water line.

Step 11



- To ensure no leaks arise from your newly connected water supply lines, proper practice would be to turn on the water faucet and check both connections to ensure no water is dripping or leaking out.
- If no water is seen leaking from your line or your connections, then you have successfully replaced your old water supply line!
- Should you need to replace the other water supply line under your sink, the same process can be used for both supply lines.

The process for reassembling the water line is included in the guide as it is a crucial component of the guide. Should you need to replace both water supply lines, then simply follow the same guide steps for the other line.