



Palm Treo 650 Camera Replacement

This guide will help you access and replace the...

Written By: cgood



INTRODUCTION

This guide will help you access and replace the Treo's camera if it is no longer functional.

TOOLS:

[Phillips #00 Screwdriver](#) (1)

[Spudger](#) (1)

[T5 Torx Screwdriver](#) (1)

[iFixit Opening Tool](#) (1)

Step 1 — Battery and Stylus



- Position the phone so the screen faces down.
- Remove the stylus found on the back of the phone.

Step 2



- Hold the button in the middle of the phone's back to remove the battery cover.
- Slide the cover down to remove it, and set the cover aside.

Step 3



- Lift the edge of the battery, separating contact points, and pull out as pictured.

Step 4 — Case



- Remove the round, rubber cover to expose a screw that will be removed in the next step.

Step 5



- Remove the six 6.9 mm screws as pictured with a T5 Torx screwdriver.
- Remove the single 9.8 mm screw next to the antenna on the back plate, using a Phillips #00 screwdriver.

Step 6



- Pull the antenna outward to remove the antenna from the body of the phone.

Step 7



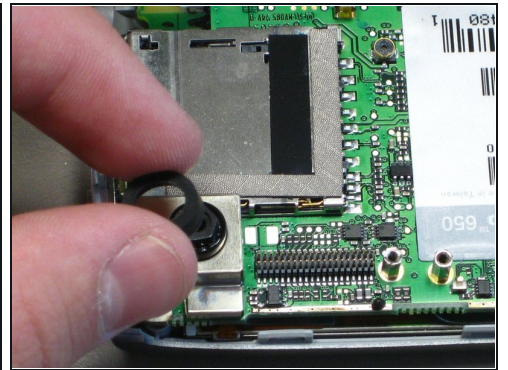
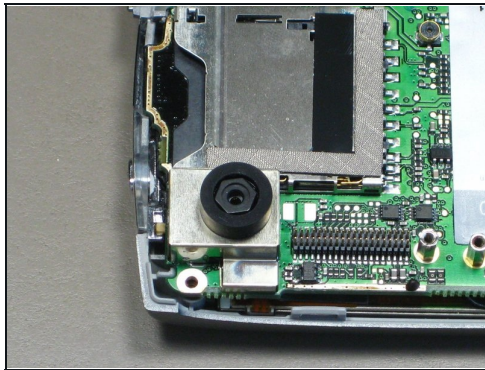
- Pry the back cover off using an iFixit opening tool.
- ⓘ Several small clips on the inside attach to the back cover.

Step 8 — Camera



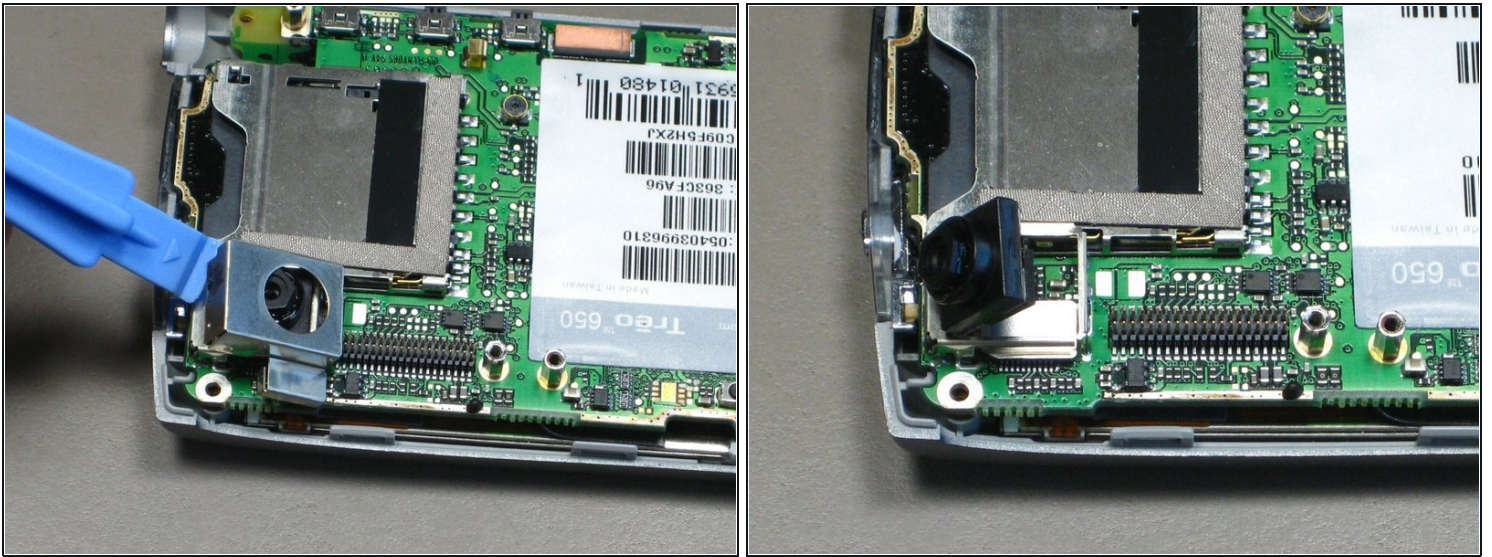
- Remove the two 3.75 mm screws.
- Pull off the logic board.

Step 9



- Pull the rubber ring off of the camera.

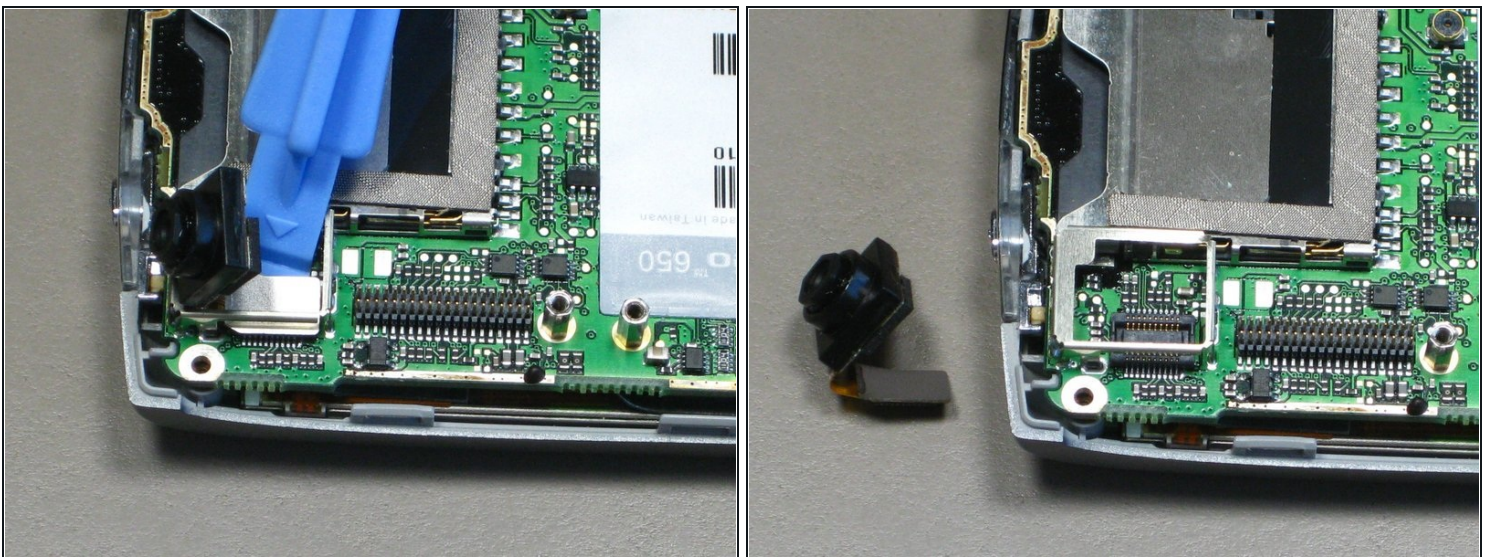
Step 10



- Pry off the metal camera case.

⚠ Lift up the camera, but do not remove. The connector must be detached first.

Step 11



- Pry off the camera connector plug.
- Remove the camera.

To reassemble your device, follow these instructions in reverse order.

