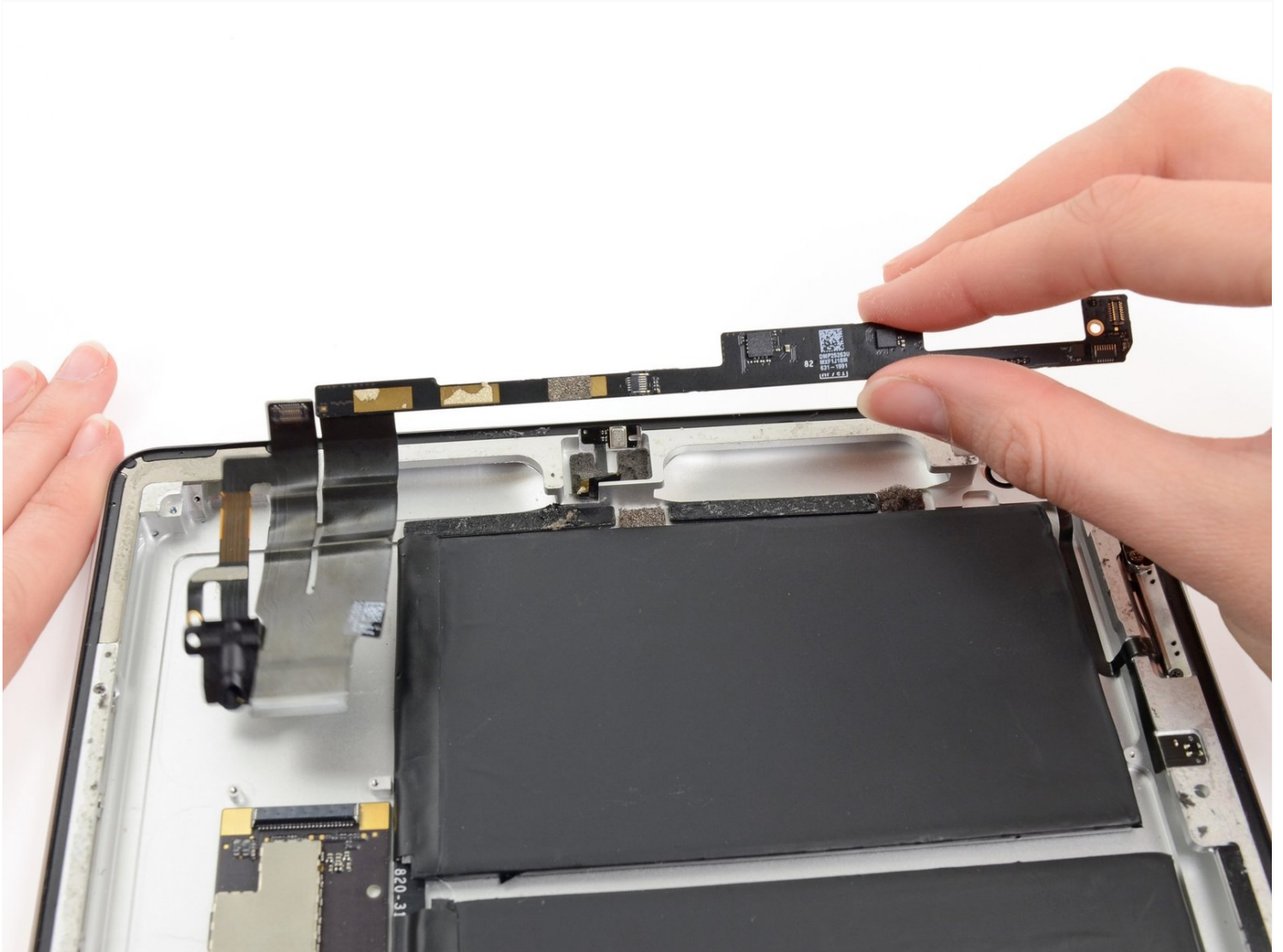




iPad 2 Wi-Fi EMC 2560 Headphone Jack Replacement

Use this guide to replace a non-functioning...

Written By: Sam Goldheart



INTRODUCTION

Use this guide to replace a non-functioning headphone jack, your roommates will thank you.

TOOLS:



iOpener (1)
iFixit Opening Picks (Set of 6) (1)
Phillips #00 Screwdriver (1)
iFixit Opening Tool (1)
Spudger (1)
Tweezers (1)

PARTS:

iPad 2 Wi-Fi (EMC 2560) Headphone Jack (1)
iPad 2 Adhesive Strips (1)

Step 1 — iOpener Heating



-  We recommend that you clean your microwave before proceeding, as any nasty gunk on the bottom may end up stuck to the iOpener.
- Place the iOpener in the center of the microwave.
 -  For carousel microwaves: Make sure the plate spins freely. If your iOpener gets stuck, it may overheat and burn.

Step 2



- Heat the iOpener for **thirty seconds**.
- Throughout the repair procedure, as the iOpener cools, reheat it in the microwave for an additional thirty seconds at a time.

⚠ Be careful not to overheat the iOpener during the repair. Overheating may cause the iOpener to burst. Do not attempt to heat over 100°C (212°F).

⚠ Never touch the iOpener if it appears swollen.

⚠ If the iOpener is still too hot in the middle to touch, continue using it while waiting for it to cool down some more before reheating. A properly heated iOpener should stay warm for up to 10 minutes.

Step 3



- Remove the iOpener from the microwave, holding it by one of the two flat ends to avoid the hot center.

⚠ The iOpener will be very hot, so be careful when handling it. Use an oven mitt if necessary.

Step 4 — Alternate iOpener heating method



ⓘ If you don't have a microwave, follow this step to heat your iOpener in boiling water.

- Fill a pot or pan with enough water to fully submerge an iOpener.
 - Heat the water to a boil. **Turn off the heat.**
 - Place an iOpener into the hot water for 2-3 minutes. Make sure the iOpener is fully submerged in the water.
 - Use tongs to extract the heated iOpener from the hot water.
 - Thoroughly dry the iOpener with a towel.
- ⚠ The iOpener will be very hot, so be careful to hold it only by the end tabs.
- Your iOpener is ready for use! If you need to reheat the iOpener, heat the water to a boil, turn off the heat, and place the iOpener in the water for 2-3 minutes.

Step 5 — Front Panel



- If your display glass is cracked, keep further breakage contained and prevent bodily harm during your repair by taping the glass.
- Lay overlapping strips of clear packing tape over the iPad's display until the whole face is covered.
 - ⓘ This will keep glass shards contained and provide structural integrity when prying and lifting the display.
- Do your best to follow the rest of the guide as described. However, once the glass is broken, it will likely continue to crack as you work, and you may need to use a metal prying tool to scoop the glass out.

⚠ Wear safety glasses to protect your eyes, and be careful not to damage the LCD screen.

Step 6



⚠ Again, as you may find yourself working with broken glass during this procedure, we strongly recommend wearing [safety glasses](#) for protection from flying shards.

- Lay the iOpener flat on the right edge of the iPad, smoothing it out so that there is good contact between the surface of the iPad and the iOpener.
- Let the bag sit on the iPad for approximately 90 seconds before attempting to open the front panel.

Step 7



- There is a small gap in the iPad's adhesive ring in the upper right corner of the iPad, approximately 2.0 inches (~5 cm) from the top of the iPad. You are going to exploit this weakness.
- Align the tool with the mute button. Insert the tip of a plastic opening tool into the gap between the front glass and the plastic bezel. Just insert the very tip of the opening tool, just enough to widen the crack.
- ⓘ It may require some force to get the wedged tip of the opening tool between the glass and plastic. Work patiently and carefully, wiggling the plastic opening tool back and forth as necessary.

Step 8



- Make sure you place the tool in the proper spot—between the plastic display bezel and the front panel glass.

Step 9



- Keeping the tip of the plastic opening tool wedged between the front glass and plastic bezel, slide a plastic opening pick in the gap, right next to the plastic opening tool.

Step 10



- Remove the plastic opening tool from the iPad, and push the opening pick further underneath the front glass to a depth of ~0.5 inches.

Step 11



- While you work on releasing the adhesive on the right side of the iPad, reheat the iOpener, and replace it on the bottom edge of the iPad.

Step 12



- While the bottom edge is being heated by the iOpener, begin releasing the adhesive from the right edge of the iPad.
- Slide the opening pick down along the edge of the iPad, releasing the adhesive as you go.

⚠ The adhesive is very strong, and some serious force may be required. Work carefully.

- ⓘ If you can see the tip of the opening pick underneath the front glass, pull the pick out just a little bit. While using the opening pick this deep won't damage anything, it may get adhesive residue all over the LCD.

Step 13



- ① It may be necessary to move the heated iOpener back onto the right edge of the iPad as you release the adhesive. This depends on how long the iPad has been able to cool while you were working on it.
- If the opening pick gets stuck in the adhesive, "roll" the pick along the side of the iPad, continuing to release the adhesive.

Step 14



- Before removing the first opening pick from the bottom corner of the iPad, insert a second pick under the right edge of the front glass to keep the adhesive from re-adhering.
- Re-heat the iOpener, and move it to the top edge of the iPad.

Step 15



★ The next few steps require extreme caution.

⚠ The Wi-Fi antenna is attached to the bottom right edge of the rear case of the iPad via screws and a cable. Because of the orientation of the Wi-Fi antenna, it is imperative to proceed with caution otherwise irreversible damage to the Wi-Fi antenna may result.

- You will have to release the adhesive securing the antenna to the front panel without damaging the delicate parts attaching the antenna to the bottom of the iPad. Follow the next steps carefully.

Step 16



- Slide the opening pick around the bottom right corner of the iPad, releasing the adhesive there.

⚠ Do not slide the pick further than the bottom right corner. You may damage the Wi-Fi antenna by doing so.

Step 17



- ⚠ This step requires you to move the opening pick along the bottom right edge of the front panel. The Wi-Fi antenna is very close to the corner and is easily severed if the adhesive is released improperly.**
- ⓘ Do not completely remove the pick from under the front glass, but pull it out just a little bit so that ~1/8" (3 mm) of the tip is still under the front glass.**
- Slide the tip of the opening pick along the bottom edge of the iPad, releasing the adhesive over the Wi-Fi antenna.

Step 18



- Once you have moved past the Wi-Fi antenna (approximately 3" (75 mm) from the right edge, or right next to the home button) re-insert the opening pick to its full depth.
- Slide the pick to the right, releasing the adhesive securing the Wi-Fi antenna to the front glass.
- The antenna is attached to the bottom of the iPad via screws and a cable. This step detaches the antenna from the front panel, ensuring that when you remove the panel, the antenna will not be damaged.

Step 19



- Continue releasing the adhesive along the bottom of the iPad, pulling the opening pick out far enough to go around the home button, and re-inserting it to a depth of 1/2 inch (10 mm) once the pick is past the home button.
- ⓘ If the adhesive has cooled too much along the bottom edge, reheat the iOpener to warm the adhesive where you are working.
- ⚠ Do not heat the iOpener more than a minute at a time, and always allow at least two minutes before reheating it.

Step 20



- Continue releasing the adhesive all the way along the bottom edge of the iPad.
⚠ On iPad 4 models, insert the pick to a maximum depth of 1/2 inch (10 mm) in this area, to avoid damaging the home button ribbon cable.
- Leave the opening pick wedged underneath the front glass near the home button.

Step 21



- Reheat the iOpener in the microwave and set it on the left edge of the iPad to start warming the adhesive in that section.

Step 22



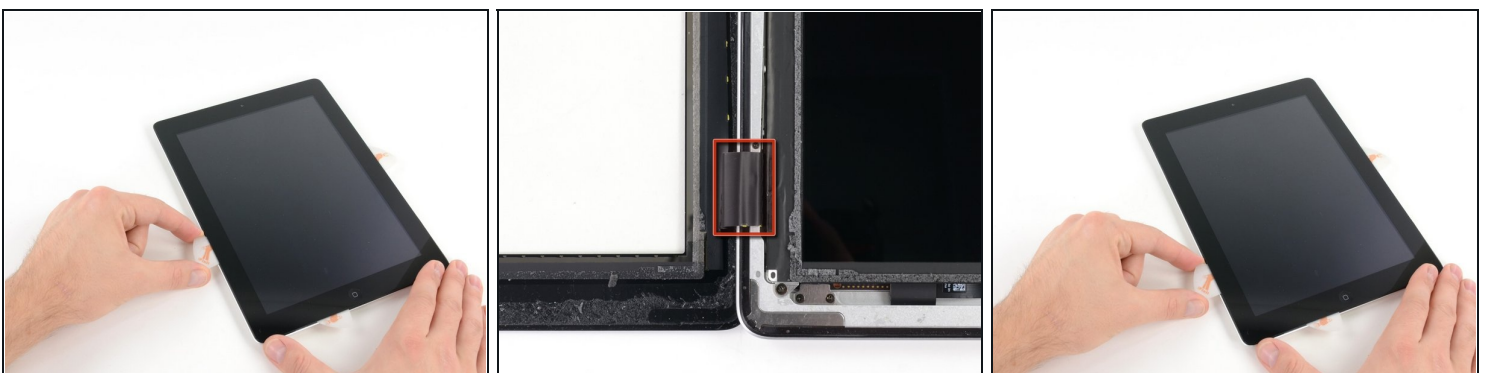
- Slide the opening pick along the top edge of the iPad, pulling it out slightly to go around the front-facing camera bracket.
- The adhesive along this section is very thick, and a fair amount of force may be required. Work carefully and slowly, making sure to not slip and damage yourself or your iPad.
- ⓘ If the adhesive has cooled too much, replace the iOpener along the top edge and continue working. If the iOpener has cooled too much, reheat it.
- ☑ If the opening pick is getting stuck in the adhesive, "roll" the pick as shown in [step 9](#).

Step 23



- Continue releasing the adhesive along the top edge of the iPad, and slide the opening pick around the top left corner.
- ⓘ If the adhesive is warm enough, remove the iOpener from the iPad for convenience. However, if the adhesive is still quite sticky, re-heat the iOpener and lay it on the left edge while you work.

Step 24



- Slide the opening pick along the left edge of the iPad, releasing the adhesive as you go. The adhesive is thin here due to the digitizer along the whole left side. Make sure the pick is not too deep (max 1/2 inch) 10 mm to prevent damaging the digitizer.

⚠ The digitizer cable is located approximately 2" (50 mm) from the bottom of the iPad. Stop sliding the pick when you get ~2.25" (60 mm) from the bottom of the iPad.

Step 25



- Using the opening pick that is still underneath the bottom edge of the iPad, release the adhesive along the bottom left corner.

⚠ The bottom of the digitizer cable is only ~1" (25 mm) from the bottom of the iPad. Work carefully and slowly, making sure to not sever this cable.

Step 26



- Using one of the opening picks, pry up the bottom right corner of the iPad and grab it with your fingers.
- ① Some of the adhesive along the perimeter of the iPad may have stuck back down again. If this is the case, slide a pick underneath the edge of the iPad where the front glass is still stuck and "cut" the adhesive.

Step 27



- Holding the iPad by the top and bottom right corners, rotate the front glass away from the iPad.

⚠ Be careful of any adhesive that may still be attached, and use an opening pick to cut any adhesive that may still be holding the front panel down.

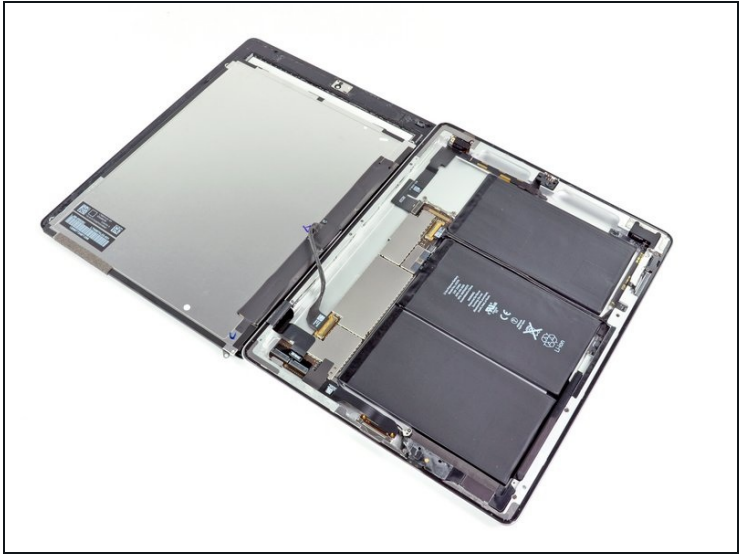
- ☑ During reassembly use a [microfiber cloth](#) and compressed air to clean any dust or fingerprints off the LCD before reinstalling the glass.

Step 28 — LCD



- Remove the four 2.0 mm Phillips screws securing the LCD to the rear case.

Step 29

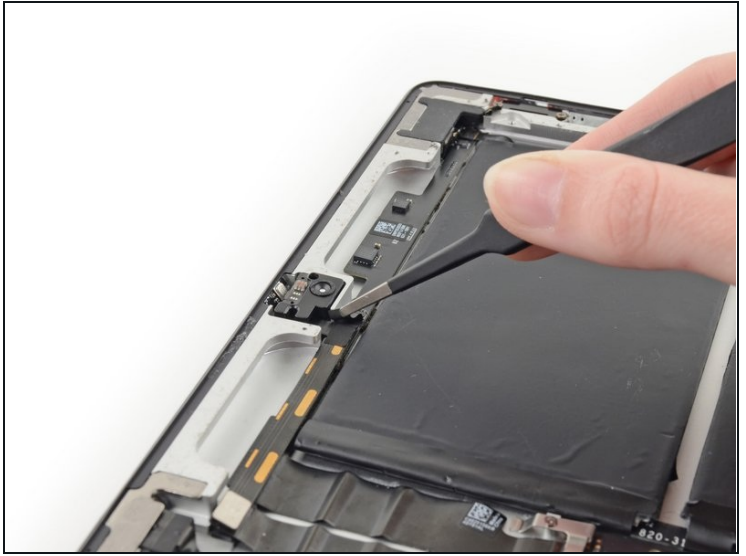
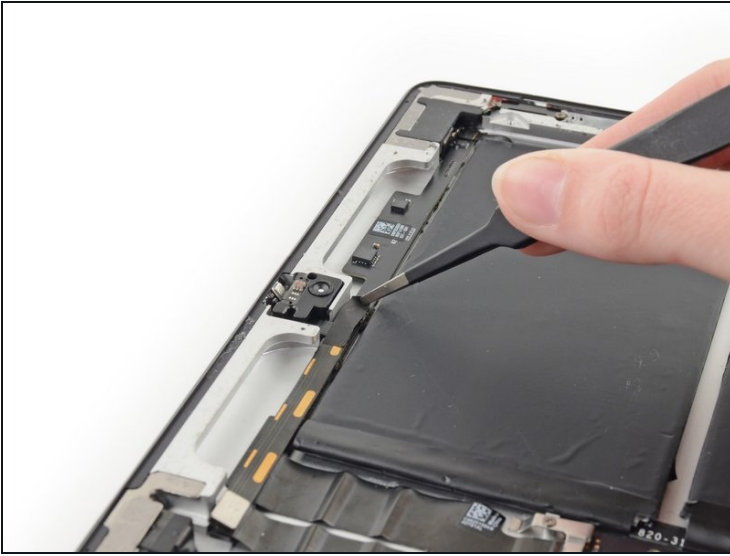


ⓘ The front panel ribbon cables are connected beneath the LCD. To access them, you'll need to temporarily flip the LCD over and out of the way.

⚠ Be very careful when moving the LCD, and do not attempt to remove it from the iPad—its display data cable will remain connected while it is rotated over.

- Lift the LCD from its long edge closest to the volume buttons and gently flip it out of the rear case—like turning the page in a book.
- Set the LCD face down on the front panel.

Step 30 — Front Facing Camera



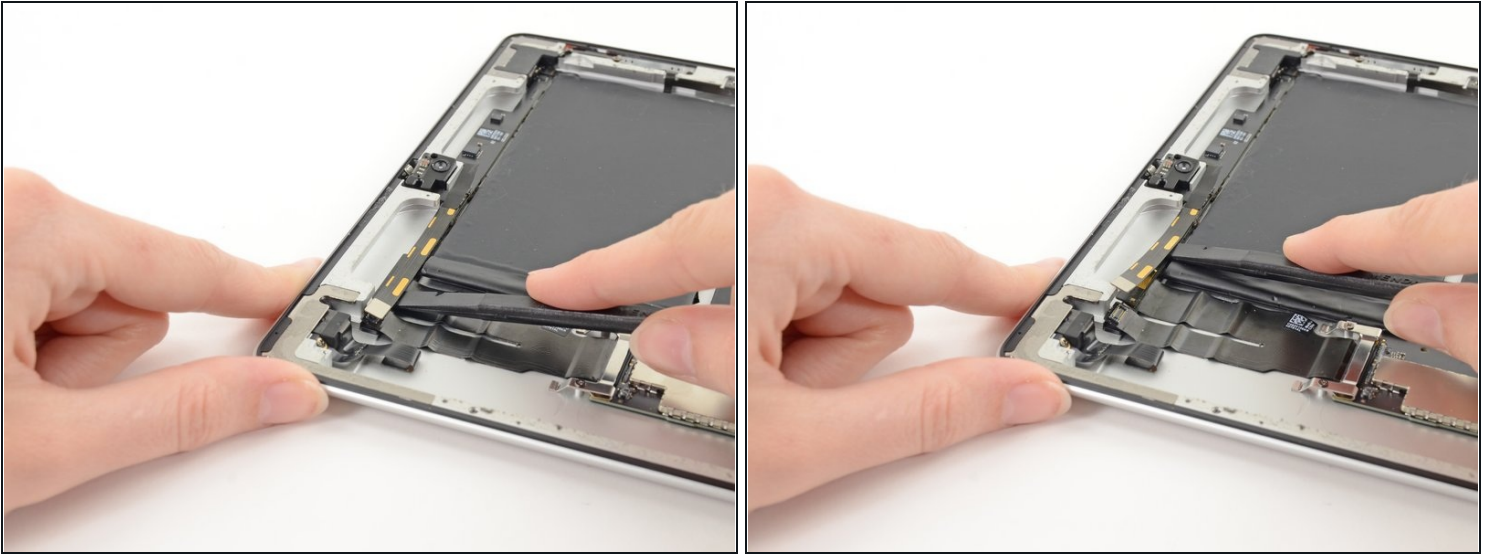
- If present, remove the piece of tape covering the end of the front facing camera cable with a pair of tweezers.

Step 31



- Use the flat end of a spudger to carefully pry the connector up from its socket on the control board.

Step 32



- Use the flat end of a spudger to separate the adhesive securing the front facing camera cable to the control board.

Step 33



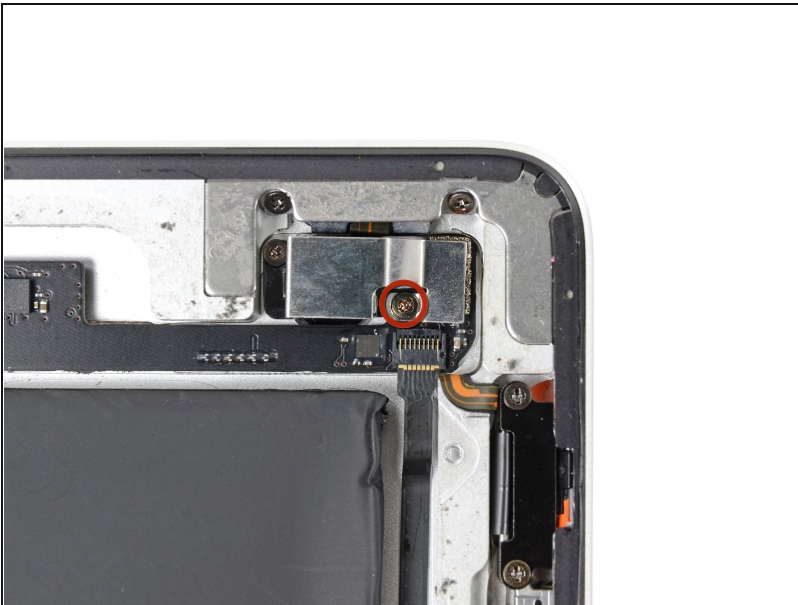
- Pry the front-facing camera up off the foam adhesive securing it to the rear case.
- Remove the front-facing camera.

Step 34 — Rear Facing Camera



- Use a pair of tweezers to remove the rubber cover up off the rear-facing camera housing.

Step 35



- Remove the single 3.3 mm Phillips screw from the rear-facing camera metal retainer clip.

Step 36



- Lift the rear-facing camera metal retainer clip straight up from its recess in the rear case.

⚠ Be sure the small thermal pad is attached to the metal retaining clip as seen in the third picture when replacing the rear-facing camera.

Step 37



- Use a plastic opening tool to pry the rear-facing camera connector up from its socket on the control board.
- Remove the rear-facing camera.

Step 38 — Headphone Jack



- Remove the single 2.1 mm Phillips screw from the rear-facing camera housing.
- Remove the camera housing from the rear case.

Step 39



- Use the flat end of a spudger to flip up the retaining flap on the button assembly ribbon cable ZIF socket.

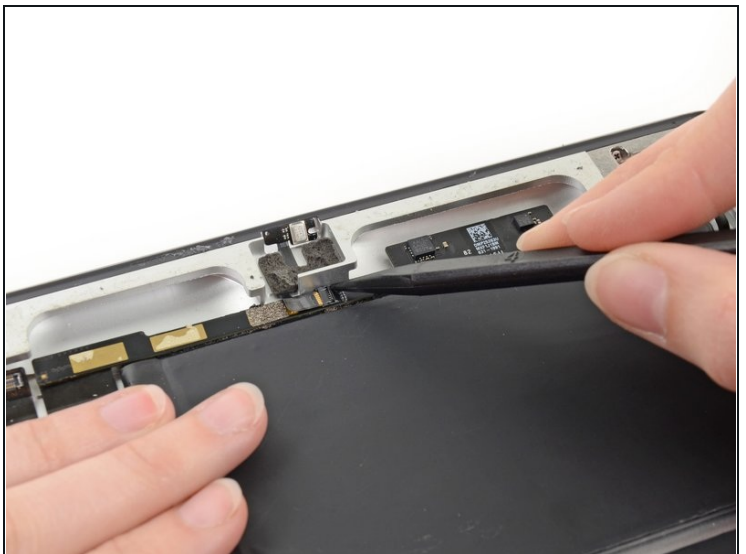
⚠ Be sure you are prying up on the hinged retaining flap, **not** the socket itself.

Step 40



- Run the tip of a spudger underneath the button assembly cable to free it from the socket.

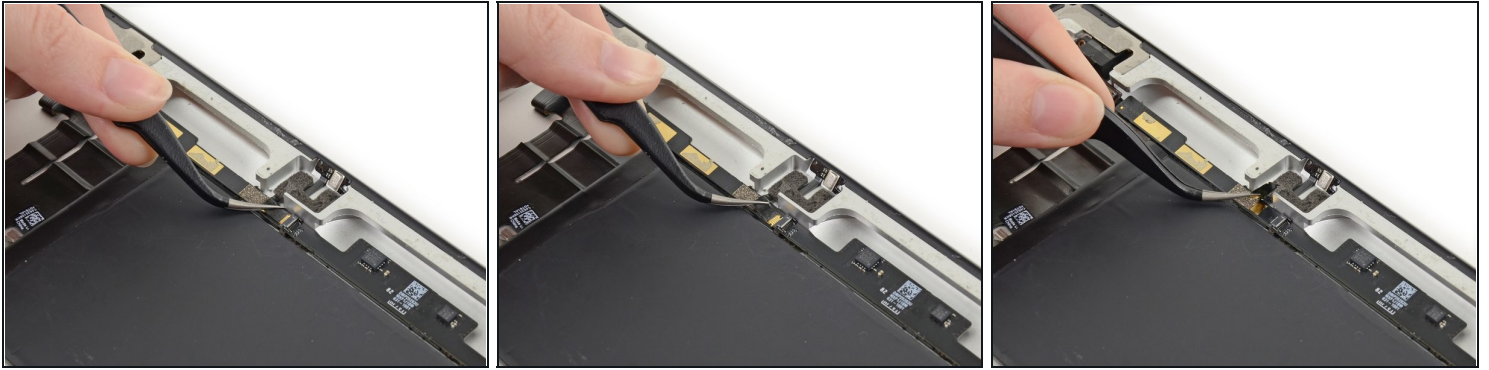
Step 41



- Use the flat end of a spudger to flip up the retaining flap on the microphone ribbon cable ZIF socket.

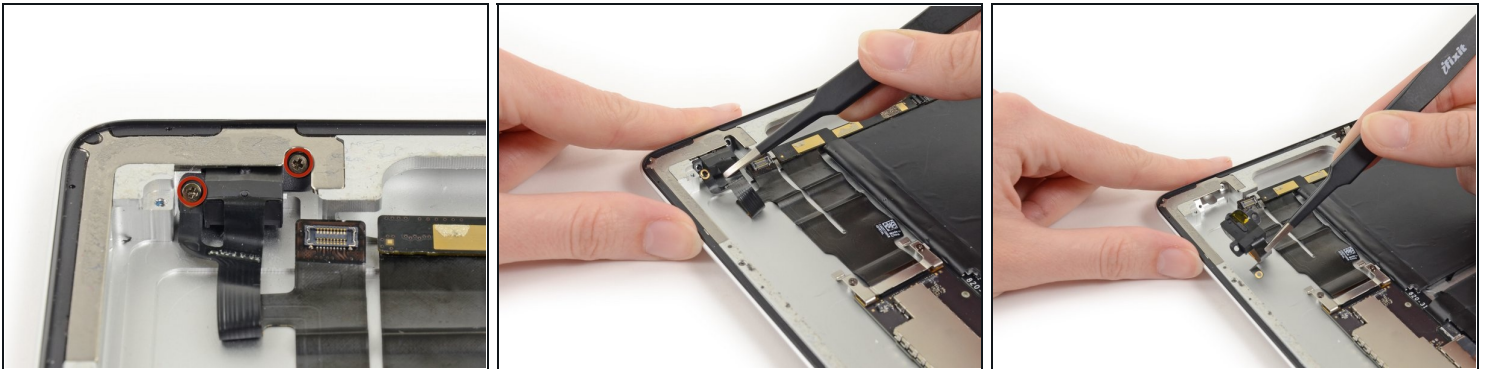
⚠ Be sure you are prying up on the hinged retaining flap, **not** the socket itself.

Step 42



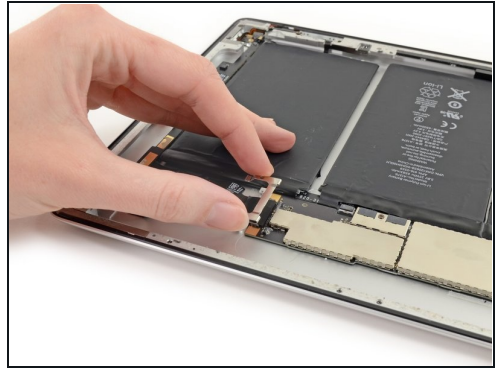
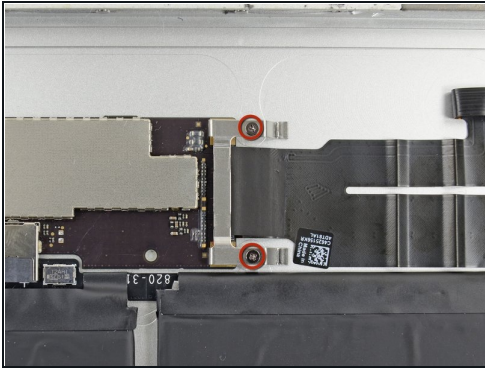
- Pull the microphone ribbon cable straight out with a pair of tweezers.
- Gently bend the cable to keep it out of the way.

Step 43



- Remove the two 2.9 mm Phillips screws securing the headphone jack to the rear case.
- Pull the headphone jack from its port in the rear case and fold out of the way.

Step 44



- Remove the two 2.1 mm Phillips screws securing the metal bracket to the rear case.
- Remove the metal bracket from the rear case.

Step 45



- If present, use tweezers to remove the piece of tape covering the end of the headphone jack/control board cable.

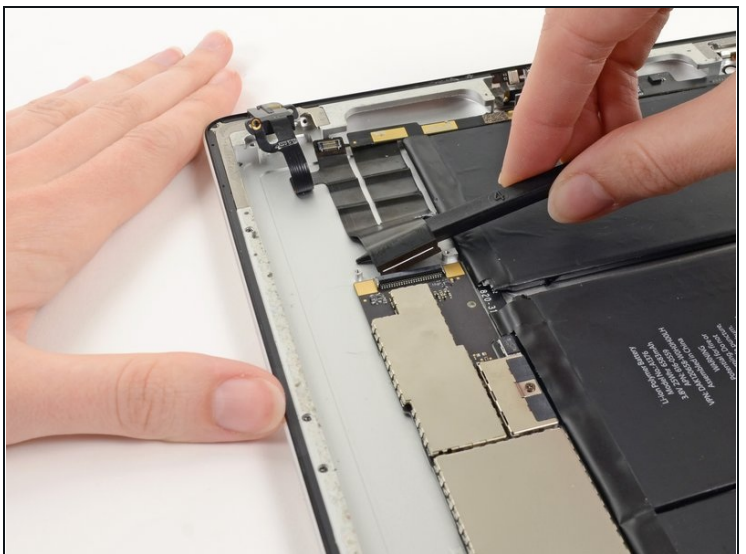
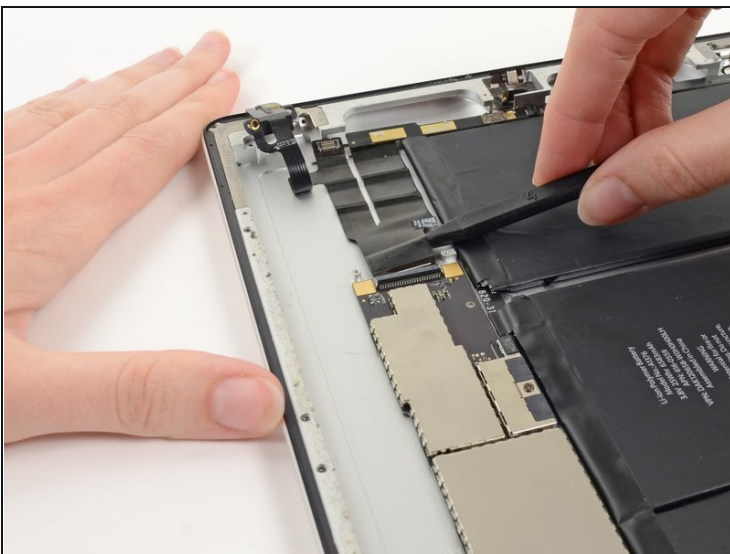
Step 46



- Use the flat end of a spudger to flip up the retaining flap on the headphone jack/control board cable ZIF socket.

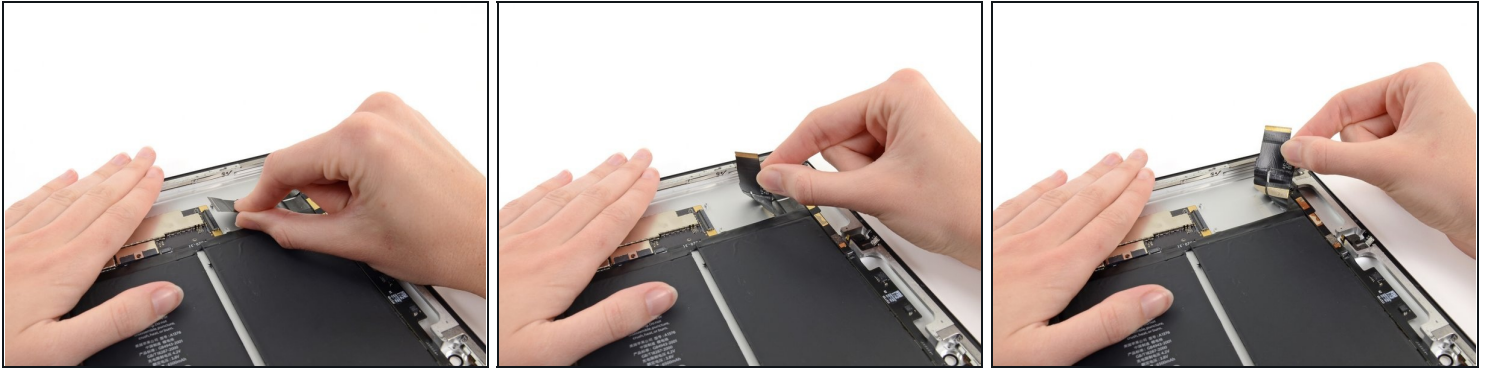
⚠ Be sure you are prying upward on the hinged retaining flap, **not** the socket itself.

Step 47



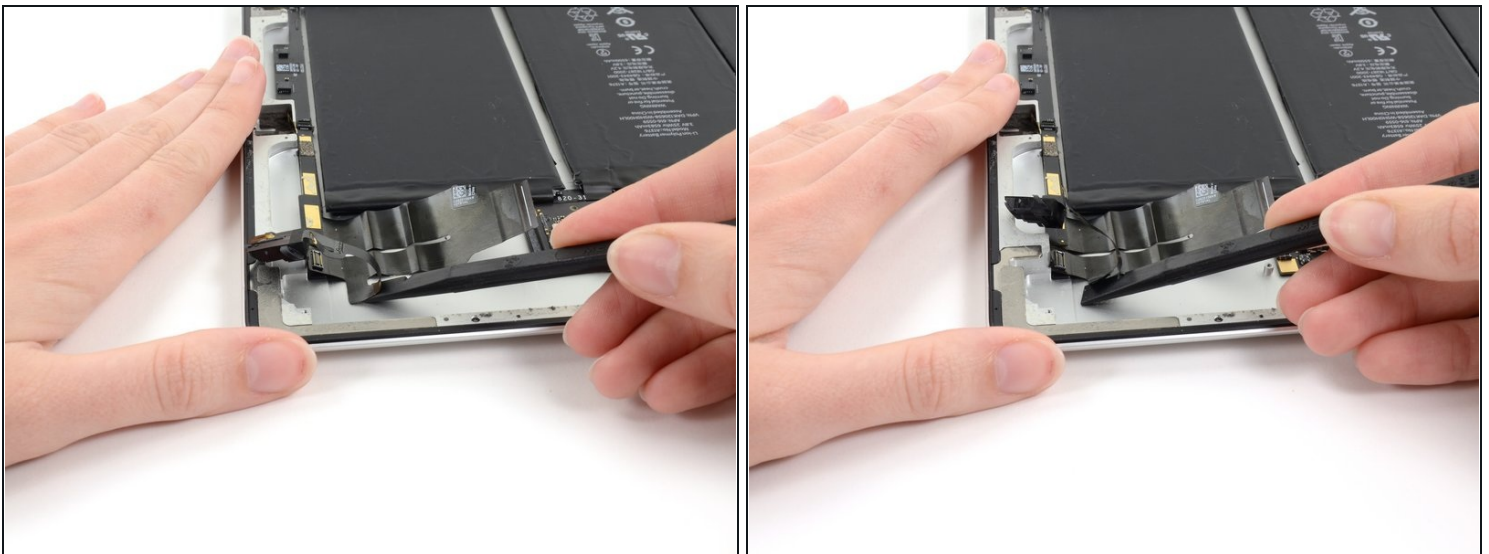
- Slide the tip of a spudger underneath the ribbon cable to disconnect it.

Step 48



- Gently peel the headphone jack/control board ribbon cable away from the rear case to free it from the adhesive.

Step 49



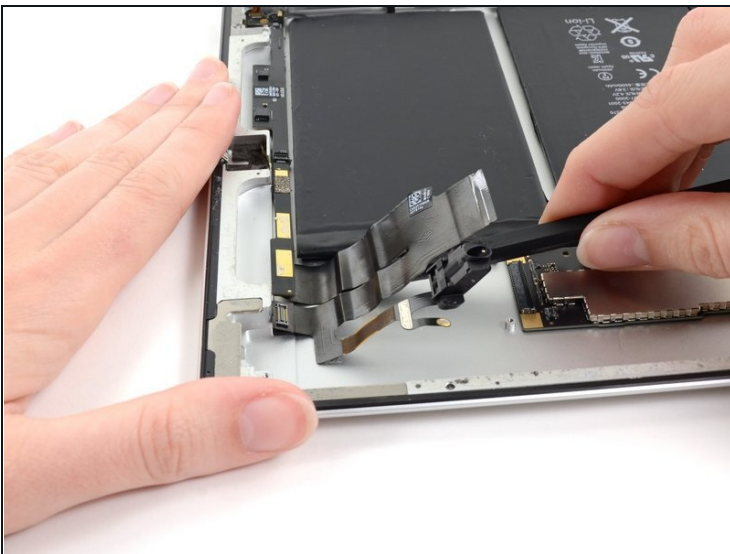
- Use the flat end of a spudger to loosen the adhesive under the narrower part of the ribbon cable near the headphone jack.

Step 50



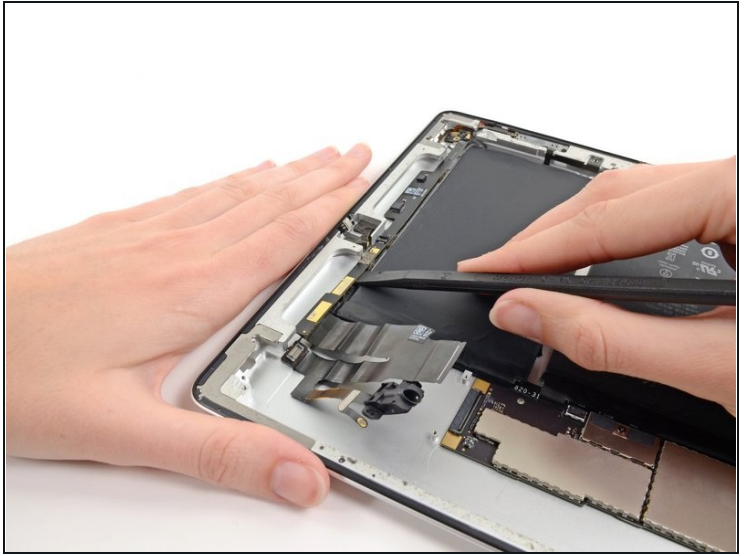
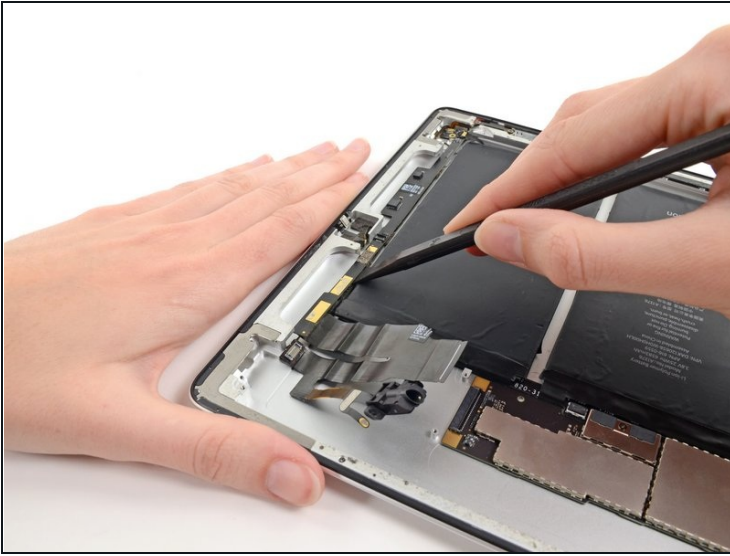
- Slide the flat end of a spudger under the middle portion of the ribbon cable to separate the adhesive holding it to the rear case.

Step 51



- Slide the flat end of a spudger under the widest part of the cable to free it from the rear case.

Step 52



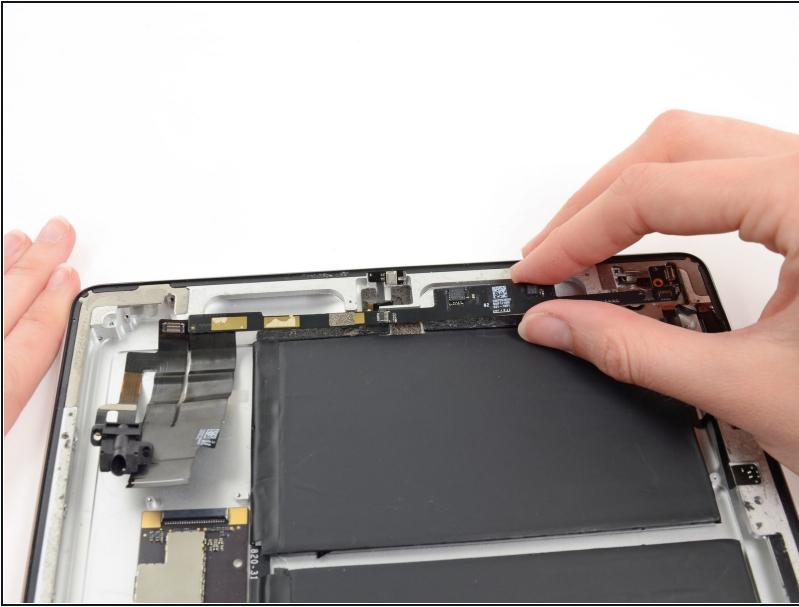
- To begin freeing it from adhesive, pry gently under the control board near the front-facing camera socket.

Step 53



- Pry gently under the control board near the rear-facing camera.
- Carefully pry under the widest part of the board to free the assembly from the last of the adhesive.

Step 54



- Remove the headphone jack assembly from the case.

To reassemble your device, follow these directions in reverse and use our [iPad 2 Wi-Fi EMC 2560 Front Panel Adhesive strips](#) guide to reattach the front panel.