



# Switch Pro Controller Case Replacement

This guide is used for the replacement of the...

Written By: Jean Galindez



# INTRODUCTION

This guide is used for the replacement of the case on your Nintendo Switch Pro Controller. Take precaution when completing this guide because it involves the removal of a lithium-ion battery. If the battery is swollen, check out this resource on [how to dispose of a swollen battery](#). To complete this guide correctly you must complete steps eight and nine with caution so as to not damage the white ribbon cable.



## TOOLS:

[JIS #00 Screwdriver](#) (1)

[Tweezers](#) (1)

[iFixit Opening Picks \(Set of 6\)](#) (1)



## PARTS:

[Nintendo Switch Pro Controller Case](#) (1)

## Step 1 — Remove the screws



- Flip the controller over so the model stickers face the ceiling.
- Use a [JIS](#) #00 screwdriver to remove the two black 8.4 mm screws that secure the handles, located at the ends of the handles.

## Step 2 — Remove the handle covers



- Carefully remove the handle covers by pulling them away from the main body.

## Step 3 — Remove the screws



- Use a JIS #00 screwdriver to remove the four silver 6.8 mm screws that secure the clear back plastic cover.

## Step 4 — Unclip the plastic cover



- Carefully pry away the clear plastic cover using your fingernail.

## Step 5 — Remove the clear plastic cover




- Remove the clear plastic cover.

## Step 6 — Remove the battery



- Remove the lithium-ion battery by using a fingernail or plastic opening tool to pry it up on the left side.

 Only a small amount of force is needed.

## Step 7 — Remove the screws



- Use a Phillips #1 screwdriver to remove the five 5 mm screws from the back of the controller.
  - The two case screws above the handgrips and the single case screw below the battery bay have a shallow seat. These three screws can be easily removed.
  - The two case screws adjacent to the **ZR** and **ZL** shoulder buttons have a deep seat. Use an extension or a Phillips screwdriver with a longer shaft to reach these screws.



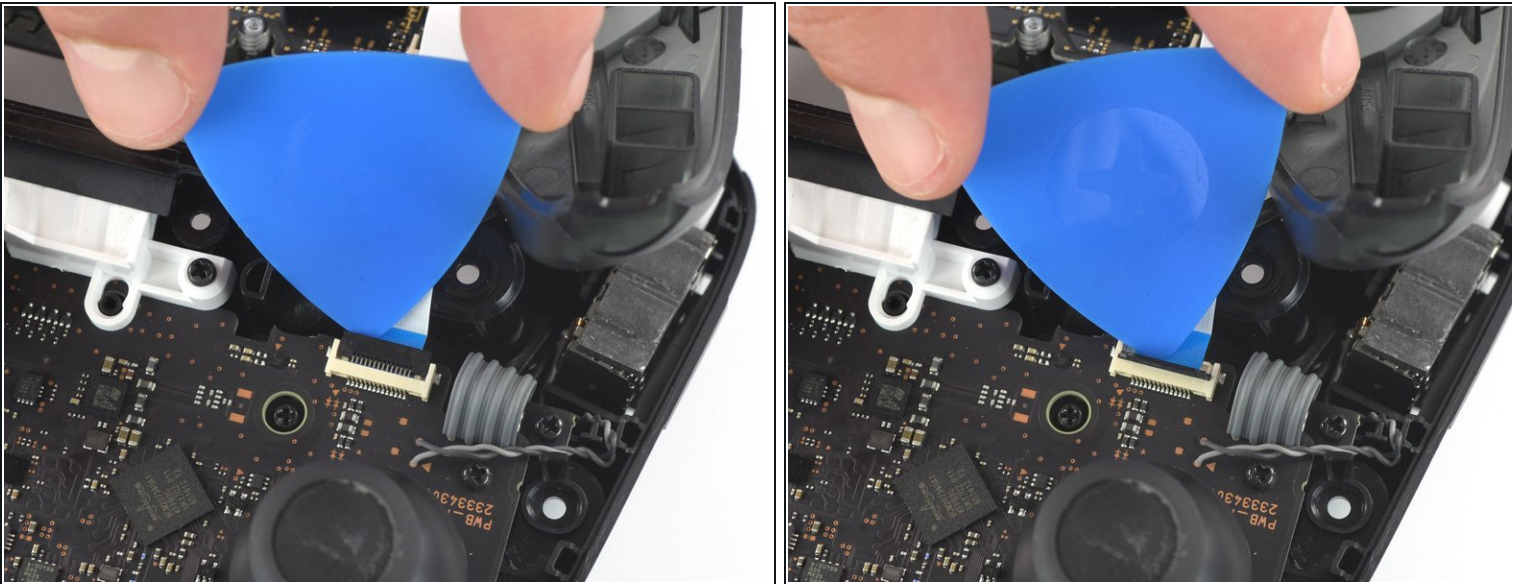
## Step 8



- Delicately take off the plastic cover from the controller.

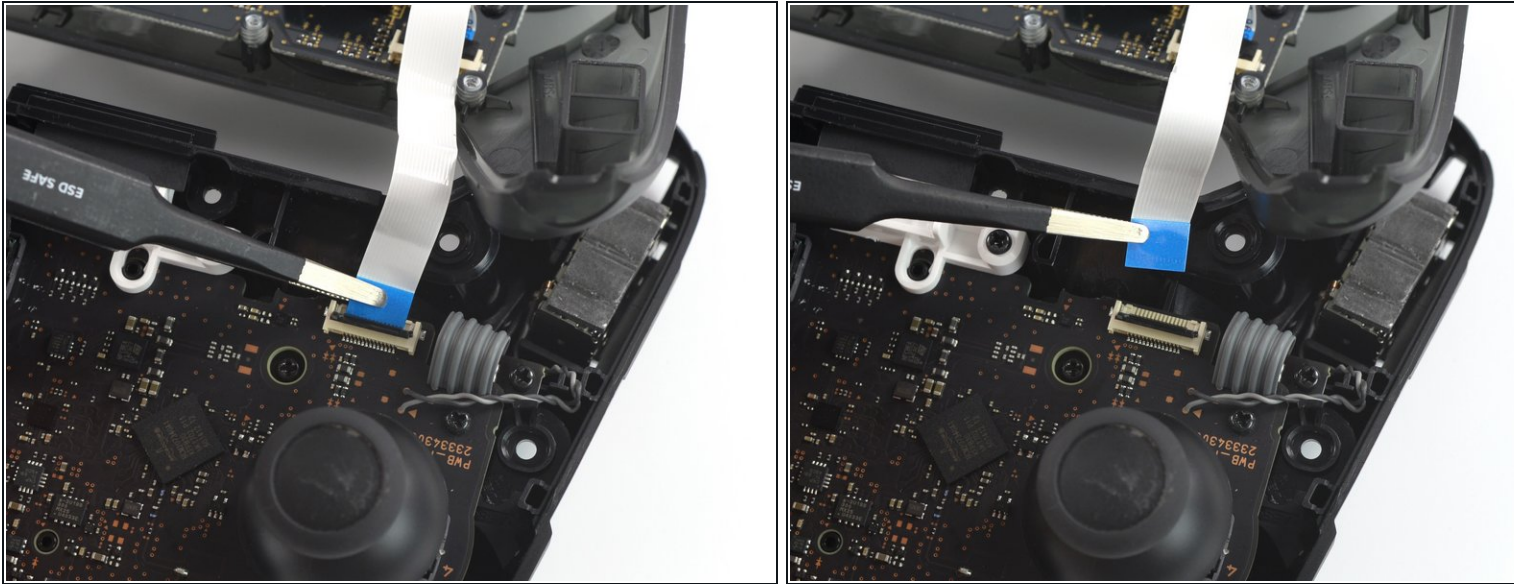
**⚠ Do not completely remove the front cover just yet, as it is still attached to the motherboard via a white ribbon cable.**

## Step 9 — Open the flap



- Use the tip of an opening pick to open the black flap of the ZIF connector by pushing it upwards.

## Step 10 — Disconnect the interconnect cable



- Use your fingers or a pair of blunt nose tweezers to disconnect the interconnect cable from its connector.

## Step 11 — Remove the front case



- Remove the front case.

To reassemble your device, follow these instructions in reverse order.