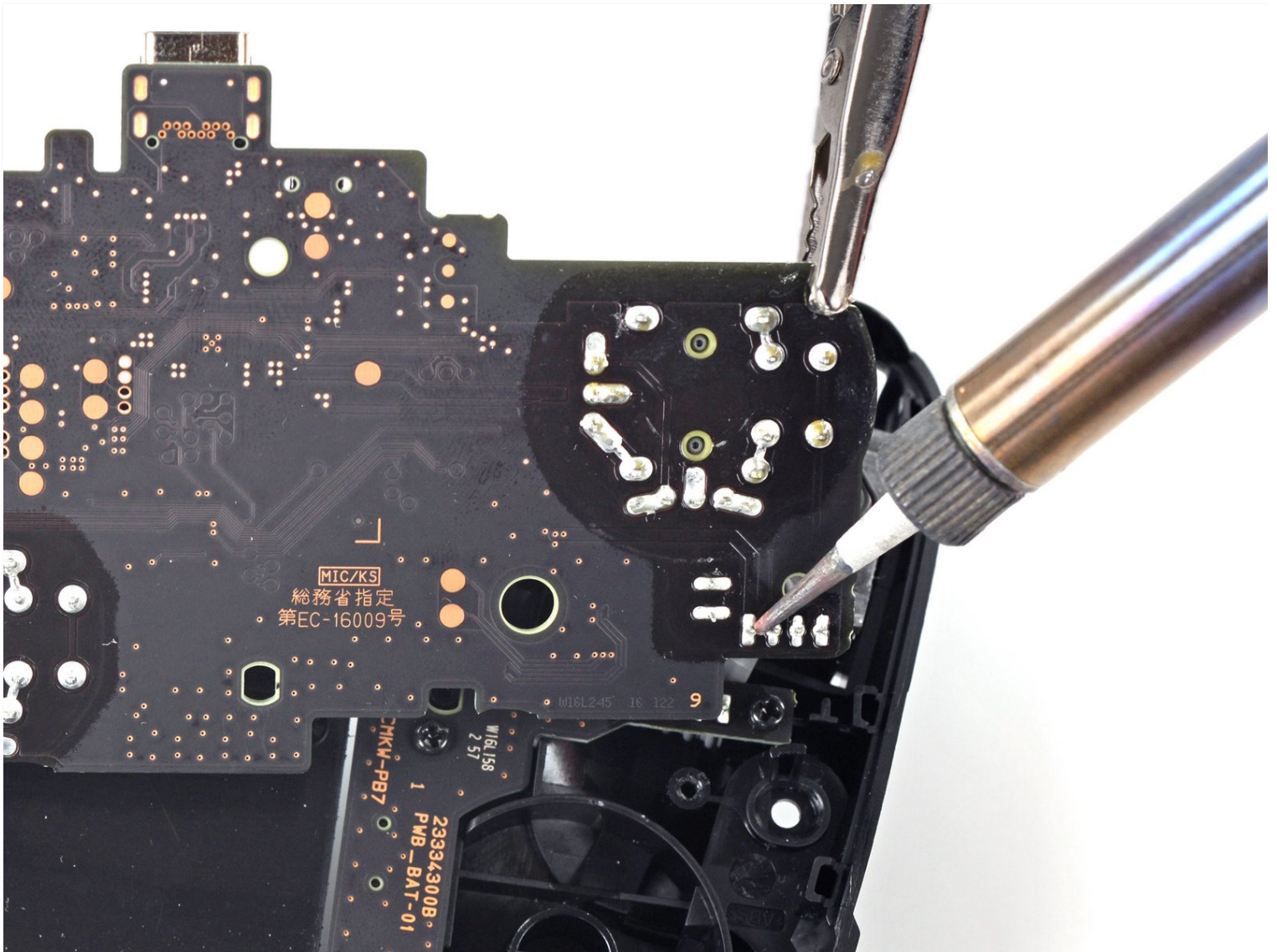




# Switch Pro Controller Motherboard Replacement

This guide is used for the replacement of the...

Written By: Jared Murphy Johnson



# INTRODUCTION

This guide is used for the replacement of the Motherboard on your Nintendo Switch Pro Controller. Take precaution when completing this guide because it involves the removal of a lithium-ion battery. If the battery is swollen, check out this resource on [how to dispose of a swollen battery](#). To Complete this guide correctly you must complete steps eight and nine with caution so as to not damage the white ribbon. In addition, you must be able to solder. If you do not know how to solder, check out this resource on [how to solder](#). Be careful when removing the plastic pieces and the internal circuit board of the controller so as to not damage the components.

## TOOLS:

[iFixit Opening Picks \(Set of 6\)](#) (1)  
[Phillips #00 Screwdriver](#) (1)  
[Soldering Iron 60w Hakko 503F](#) (1)  
[Spudger](#) (1)  
[Tweezers](#) (1)

## PARTS:

[Nintendo Switch Pro Controller Motherboard](#) (1)

## Step 1 — Remove the screws



- Flip the controller over so the model stickers face the ceiling.
- Use a [JIS](#) #00 screwdriver to remove the two black 8.4 mm screws that secure the handles, located at the ends of the handles.

## Step 2 — Remove the handle covers



- Carefully remove the handle covers by pulling them away from the main body.

## Step 3 — Remove the screws



- Use a JIS #00 screwdriver to remove the four silver 6.8 mm screws that secure the clear back plastic cover.

## Step 4 — Unclip the plastic cover



- Carefully pry away the clear plastic cover using your fingernail.

## Step 5 — Remove the clear plastic cover




- Remove the clear plastic cover.



## Step 6 — Remove the battery



- Remove the lithium-ion battery by using a fingernail or plastic opening tool to pry it up on the left side.

 Only a small amount of force is needed.

## Step 7 — Remove the screws



- Use a Phillips #1 screwdriver to remove the five 5 mm screws from the back of the controller.
  - The two case screws above the handgrips and the single case screw below the battery bay have a shallow seat. These three screws can be easily removed.
  - The two case screws adjacent to the **ZR** and **ZL** shoulder buttons have a deep seat. Use an extension or a Phillips screwdriver with a longer shaft to reach these screws.

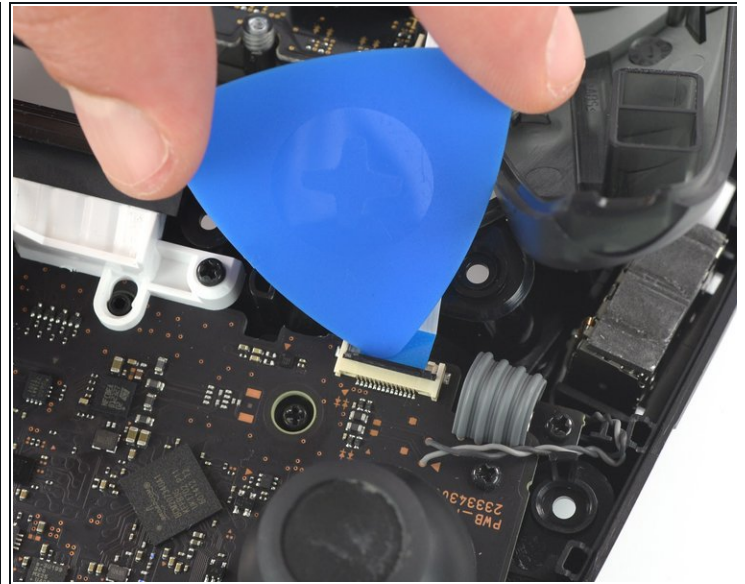
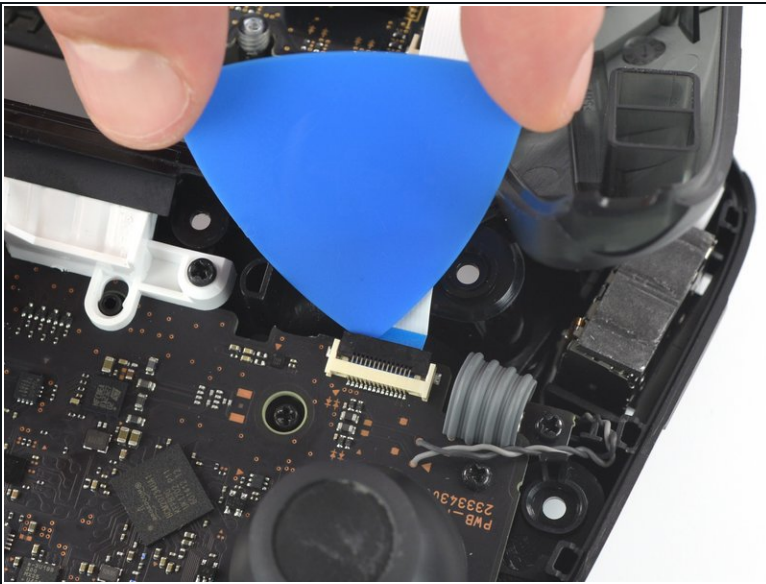
## Step 8



- Delicately take off the plastic cover from the controller.

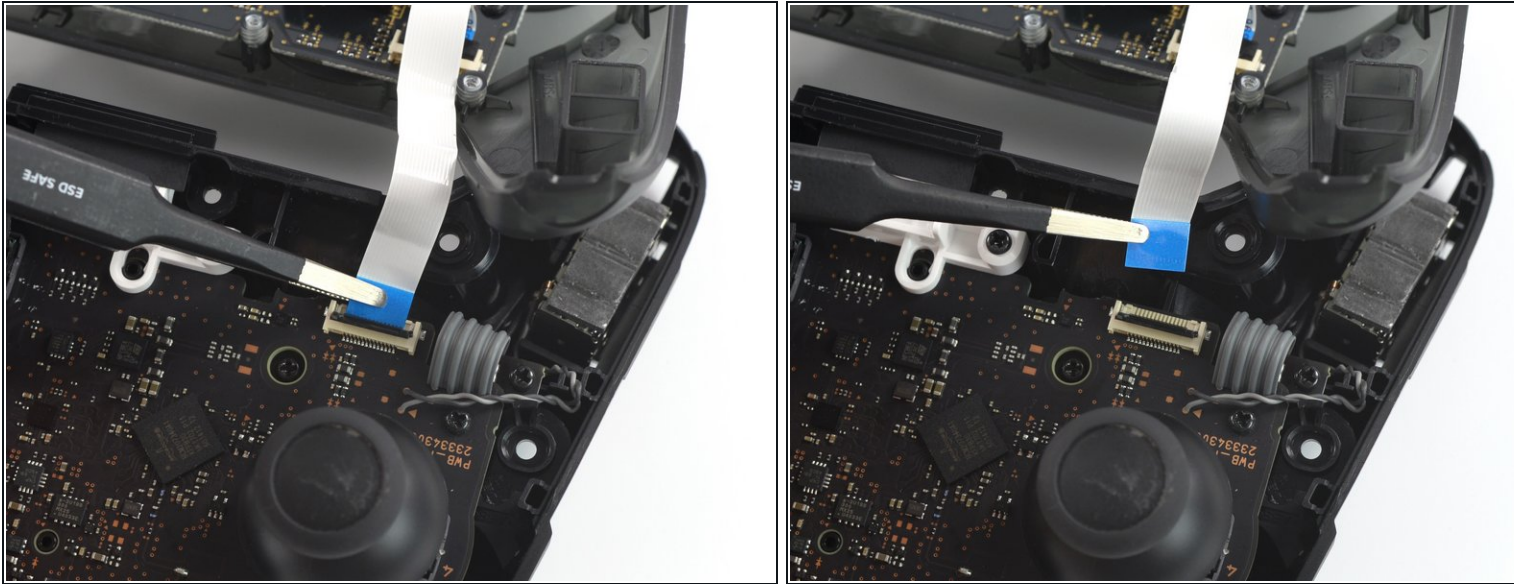
⚠ Do not completely remove the front cover just yet, as it is still attached to the motherboard via a white ribbon cable.

## Step 9 — Open the flap



- Use the tip of an opening pick to open the black flap of the ZIF connector by pushing it upwards.

## Step 10 — Disconnect the interconnect cable



- Use your fingers or a pair of blunt nose tweezers to disconnect the interconnect cable from its connector.

## Step 11 — Remove the front case



- Remove the front case.



## Step 12 — Remove the joystick caps



- With light force pull the two joystick caps off of the controller.

## Step 13 — Loosen the adhesive



- Insert the tip of a spudger from the back into the hole on the right controller handle.
- Push the spudger through the hole to loosen the adhesive which is holding rumble modules in their places.

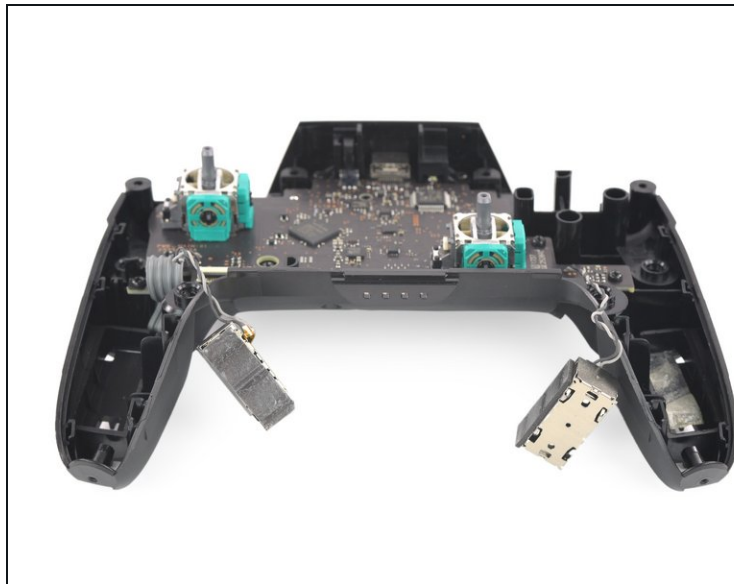
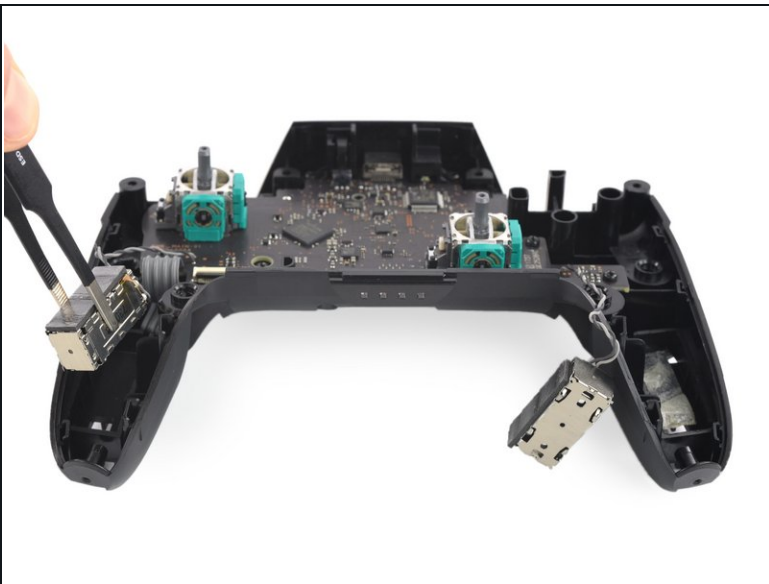


## Step 14 — Loosen the adhesive



- Insert the tip of a spudger from the back into the hole on the left controller handle.
- Push the spudger through the hole to loosen the adhesive which is holding rumble modules in their places.

## Step 15 — Lift the modules



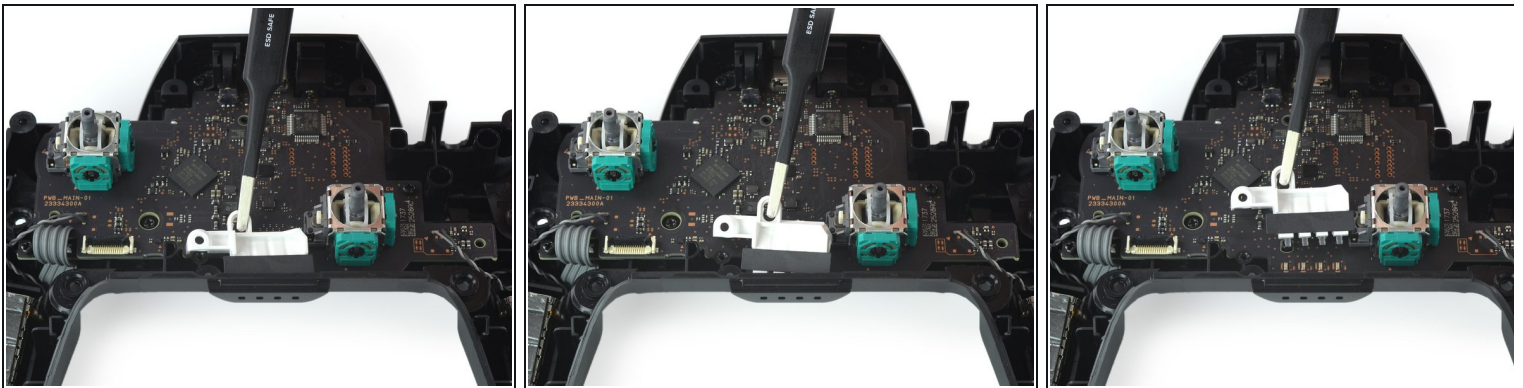
- Use a pair tweezers to lift the modules out of their places.

## Step 16 — Unscrew the motherboard



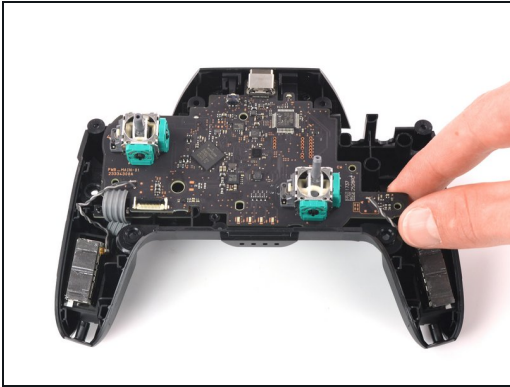
- Use a Phillips screwdriver to remove the four 5 mm-long screws securing the motherboard.

## Step 17 — Remove the LED light



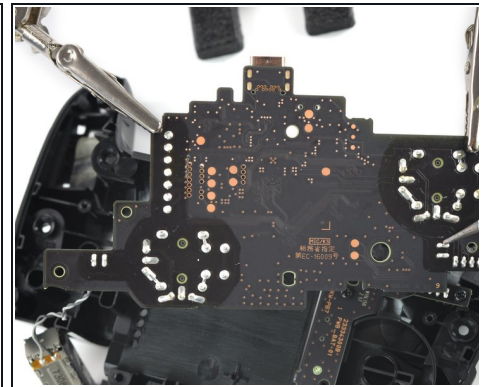
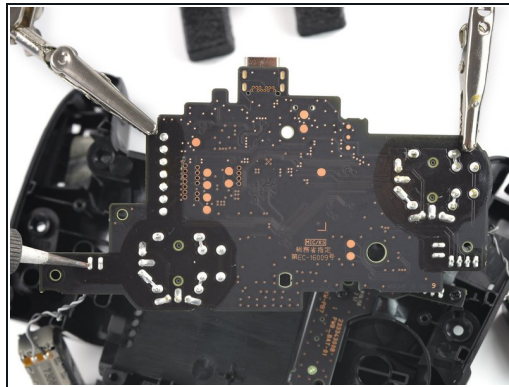
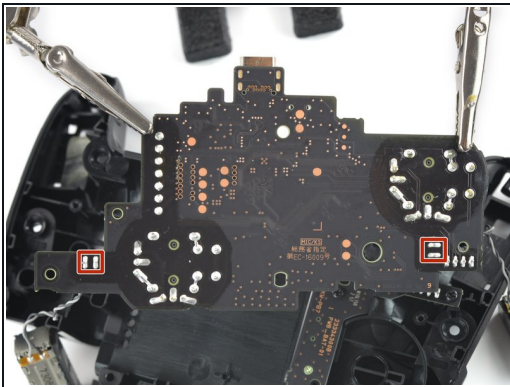
- Use your thumb or a pair of tweezers to take off the white LED light housing.

## Step 18 — Lift the motherboard



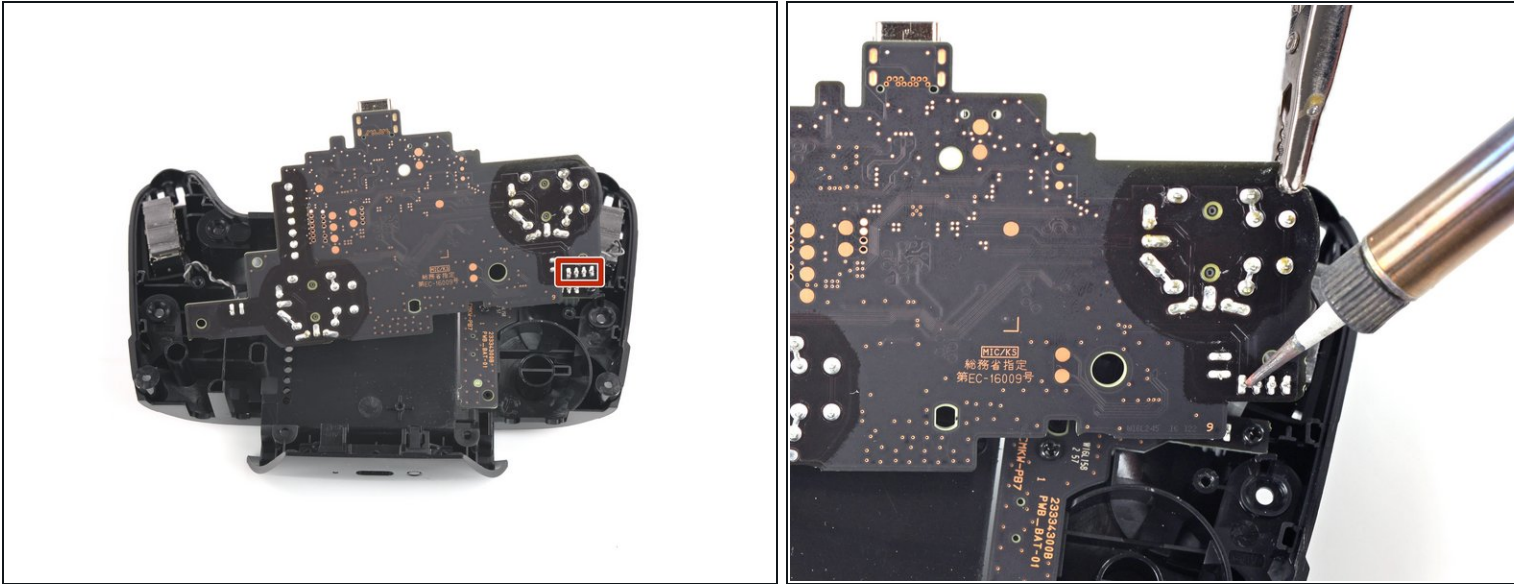
- Lift the motherboard carefully as to not damage the wires and flip it to reveal the backside.

## Step 19 — Desolder the rumble modules



- Desolder the rumble motor solder points on either side of the motherboard.
- Remove the rumble modules.
- ⓘ Refer to the following solder guide if necessary: [How to Solder](#)
- ☑ Solder the new rumble modules into the same pins.

## Step 20 — Desolder the main power cable



- Remove the main power cable from the highlighted pins by de-soldering them.
- Remove the motherboard.
- ① Refer to the following solder guide if necessary: [How to Solder](#).

To reassemble your device, follow these instructions in reverse order.