



Dell Latitude E5450-5450 LCD Screen Replacement

Easy steps to replace the LCD screen of Dell Latitude-E5450 Laptop.

Written By: Tulsi Panchal



INTRODUCTION

You can use this guide in order to replace the screen of a Dell Latitude E5450 laptop.

There are so many different types of laptop screens available in the market such as transmissive screens, reflective screens, transflective screens, widescreens, backlit LED displays, and many more. I would recommend buying a laptop screen which prevents eye strain.

Every display panel is made up of a series of dots called pixels. In general, the higher the pixel count, the better the display.

To begin with the screen replacement process, you need a Phillips #0 screwdriver. Before performing any task, you must unplug the laptop from a charger or any other device. Then remove the battery which can help to prevent shock.



TOOLS:

- [Spudger](#) (1)
- [Phillips #0 Screwdriver](#) (1)



PARTS:

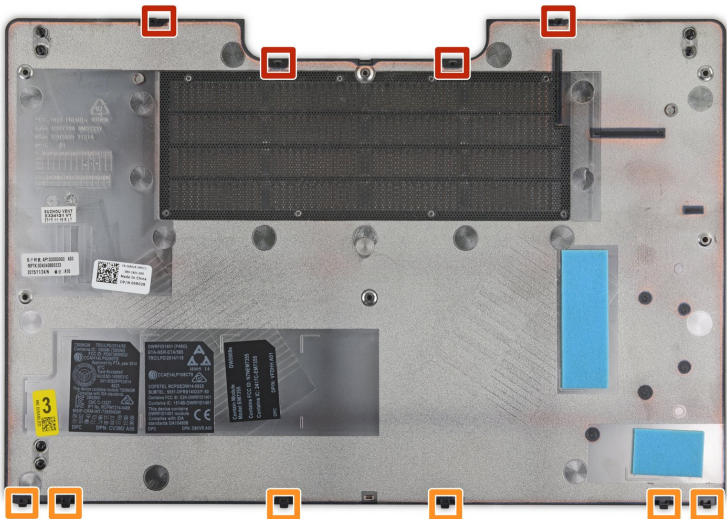
- [Dell Latitude 3150 3160 E5250 E5450 E5550 7.4V Replacement Laptop Battery](#) (1)
- [Dell Latitude E5270 Replacement Laptop Battery](#) (1)
- [LCD screen dell latitude E5450](#) (1)

Step 1 — Unscrew the Lower Case



- Remove the six Philips #0 screws from the lower case.
- ⓘ These screws are all 5.6 mm long, but it's still a good idea to [keep track of them](#) and make sure they go back in their proper holes!

Step 2



- ⓘ This photo shows the location of the ten clips that hold the lower case in place. Take note of the location of

the clips, and refer back to this step if your lower case gets stuck during removal.

- Four clips hold the upper half of the case in place and can be released by prying around them with a spudger.
- The other six clips along the bottom edge **can not** be released by prying at them. Instead, they come free by sliding the whole case upward, as shown in [step 5](#) below.

Step 3



- Insert the flat edge of a spudger into the [small divot](#) along the top edge of the case, just below the docking station port.
- Pry up to release the two central clips along the upper edge of the case.

Step 4



- Use your spudger to pry up the remaining clips along the top edge.

Step 5 — Remove the Lower Case



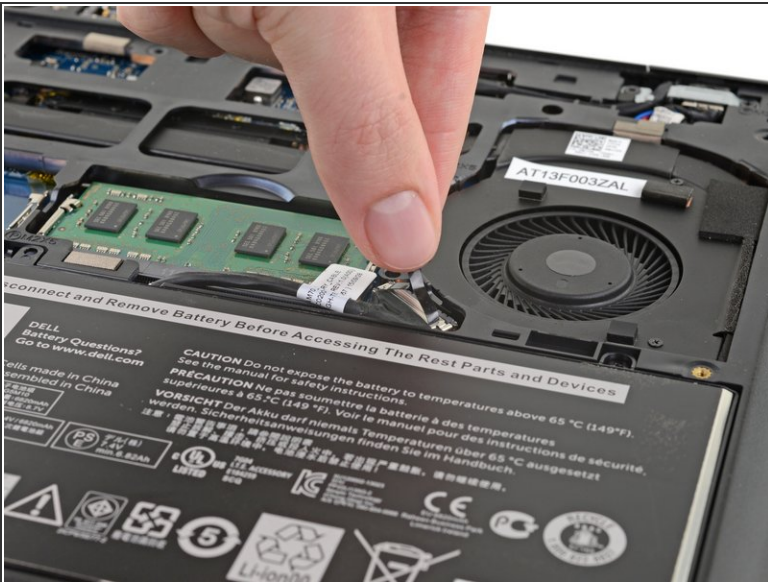
- Slide the lower case upward and remove it.

Step 6



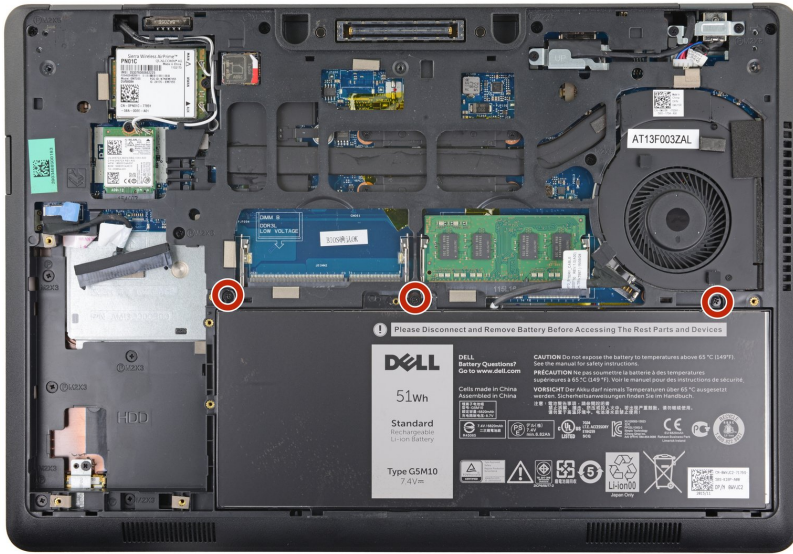
- ✦ When reinstalling the lower case, make sure you slide the bottom edge (the edge without the cutout) into place first before snapping the rest of the clips shut.

Step 7 — Disconnect the Battery



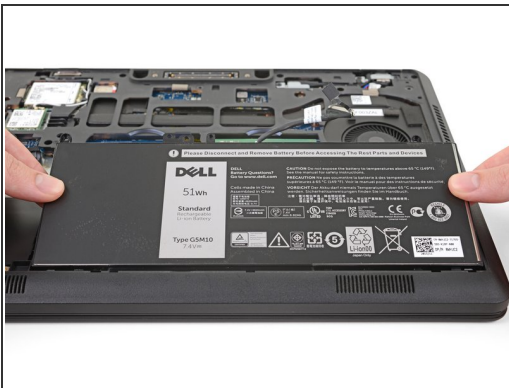
- Pull up on the battery connector's pull tab to disconnect the battery.

Step 8 — Unscrew the Battery



- Remove the three 5.6 mm Philips #0 screws from the top edge of the battery.

Step 9 — Remove the Battery



- Remove the battery from the laptop.

⚠ The battery cell extends below the bottom lip of the enclosure. Make sure you lift the battery away from the bottom edge of the laptop at an angle, as shown in the photos.

Step 10



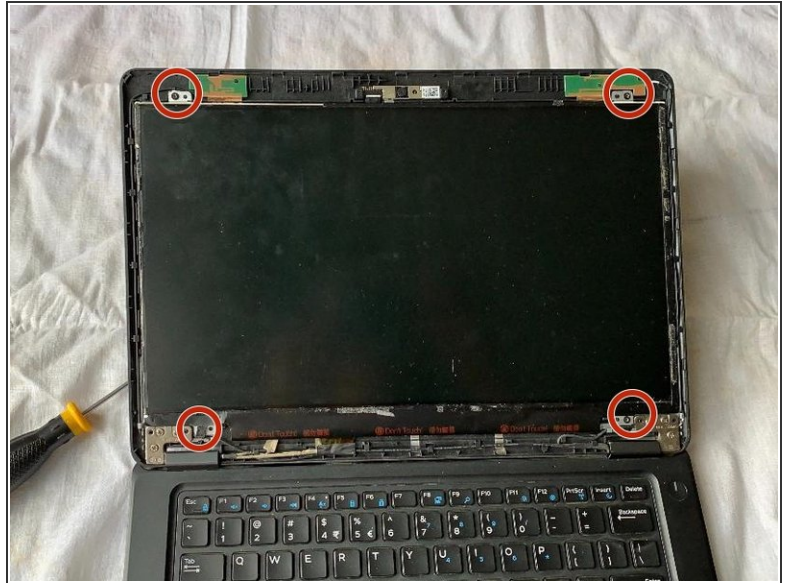
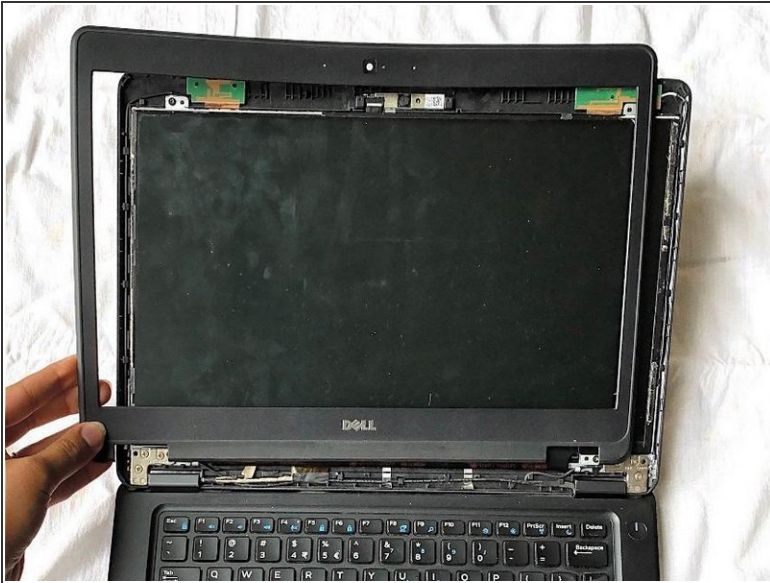
- ✦ When installing your new battery, slide the bottom edge in first, and make sure it lays flat before you proceed to reinsert the screws or reconnect it.

Step 11 — LCD Screen



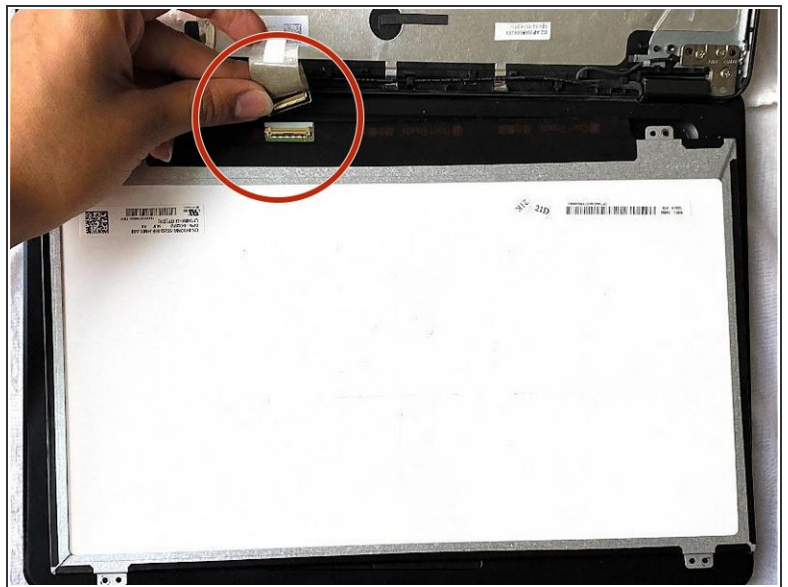
- Flip the laptop so the front panel is facing you.
- Open the laptop.

Step 12



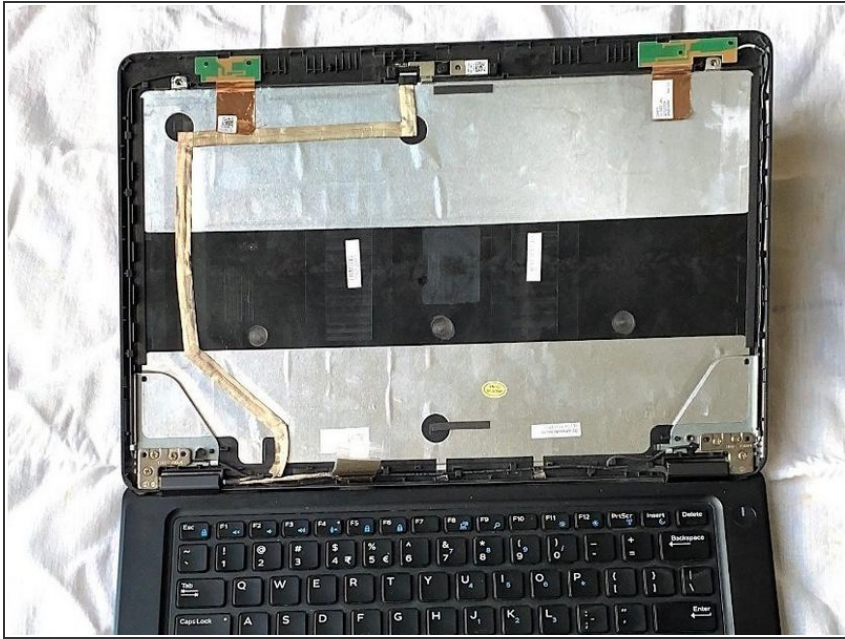
- Remove the plastic cover surrounding the screen.
- Remove the four Phillips #0 screws from each corner of the laptop.

Step 13



- Carefully put the screen upside down on the keyboard.
- Disconnect the cable with the QR code on the opposite side of the screen.

Step 14



- Remove the screen from the laptop.

To reassemble your device, follow these instructions in reverse order. If you have removed too much adhesive, then please reapply it and let it dry before you start using the laptop.