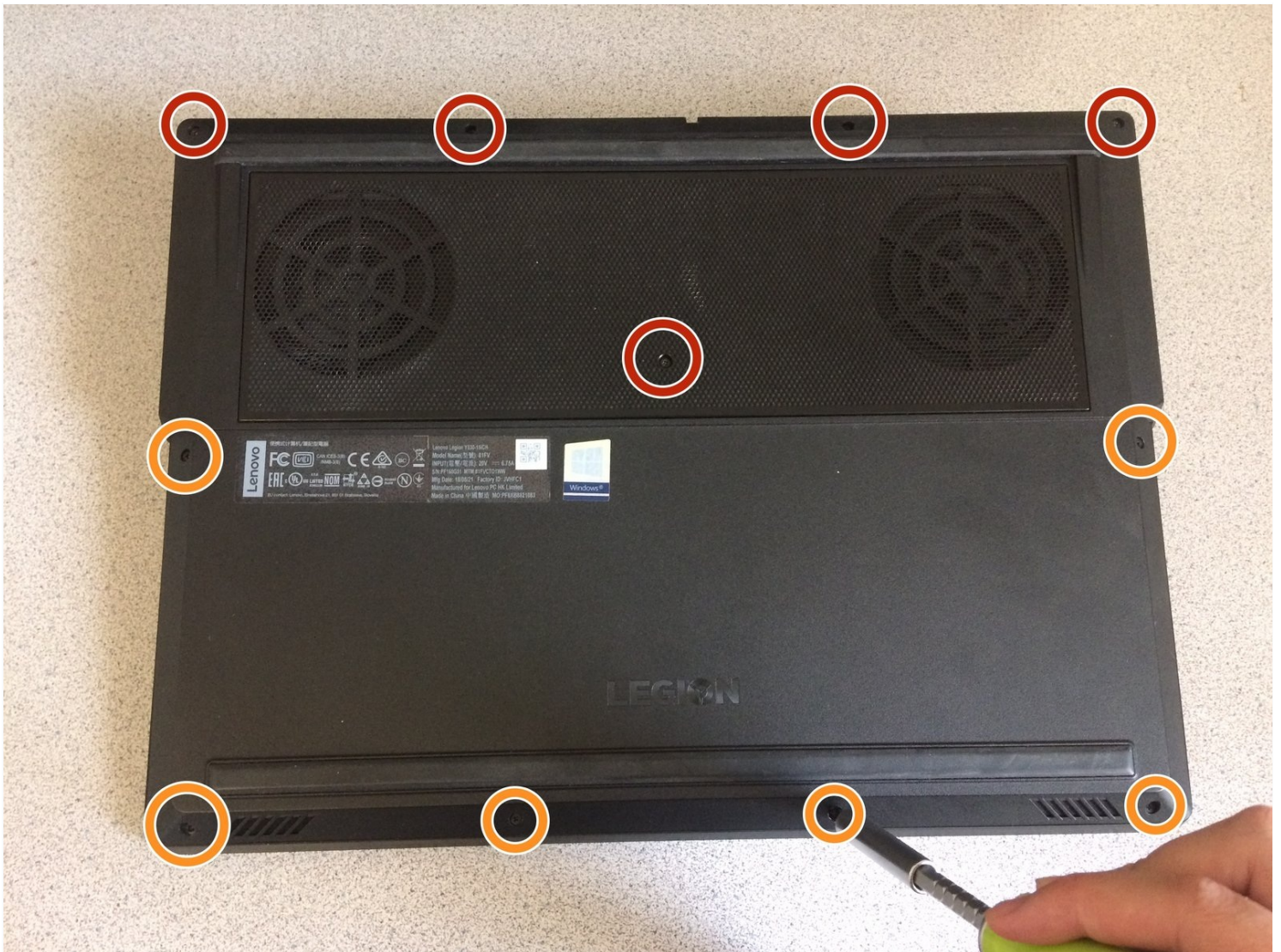




Lenovo Legion Y530-15ICH Wireless LAN Card Replacement

A wireless LAN card is the part of a laptop...

Written By: Christopher Nguyen



INTRODUCTION

A wireless LAN card is the part of a laptop that allows wireless access to a network. With one, you do not need a direct connection using an Ethernet cable. The wireless LAN card is responsible for the connection, speed, and stability in staying connected with a network. If your wireless connection is unstable or disconnecting randomly, then it might be time to replace your card.

This guide is to help replace a faulty wireless LAN card in the Lenovo Legion Y530-15ICH.

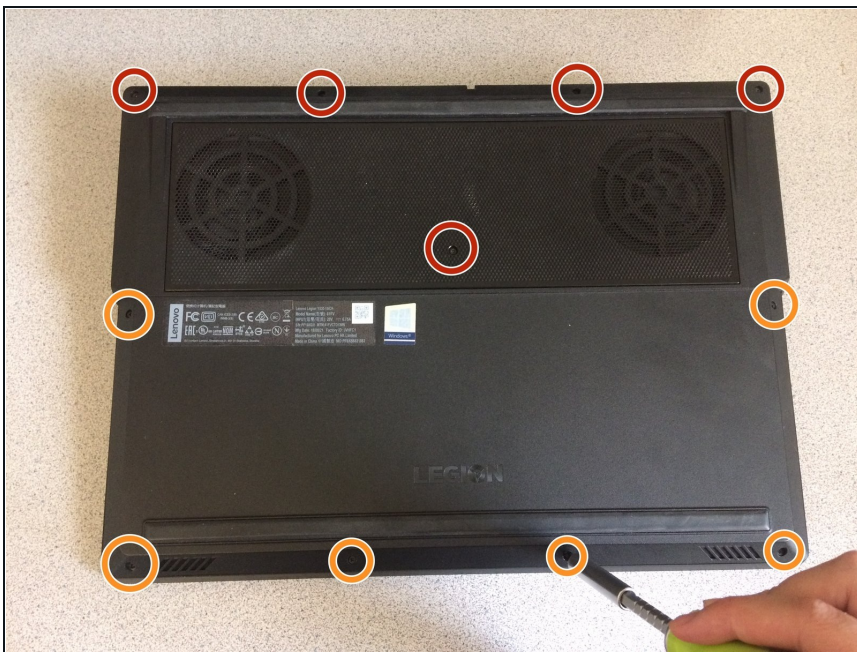
TOOLS:


Phillips #0 Screwdriver (1)
1 x Opening Picks (1)

PARTS:

Lenovo 00JT497 Wireless Adapter (1)
Lenovo 01AX712 Wireless Adapter (1)
Lenovo 01AX768 Wireless Adapter (1)

Step 1 — Wireless LAN Card



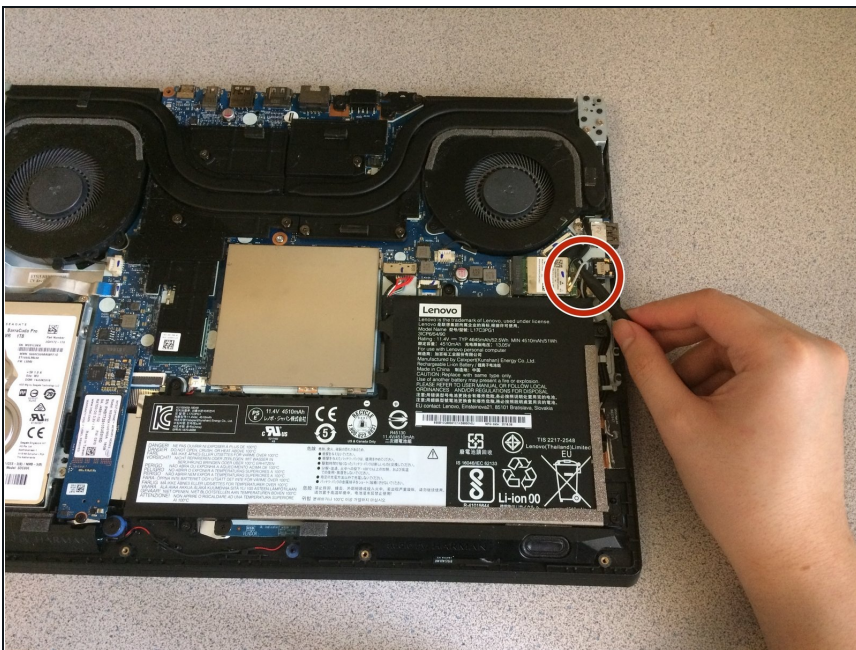
-  Make sure your computer is turned off.
- Remove the five 7 mm screws using a Phillips #0 screwdriver.
- Remove the six 4 mm screws using a Phillips #0 screwdriver.

Step 2



- Slowly and carefully pry off the backside of the computer using an opening pick.
- ① You can start from the corner or sides of computer. Slowly work around the computer until it completely detaches.

Step 3



- Detach the two antenna wires attached to the wireless LAN card.

Step 4



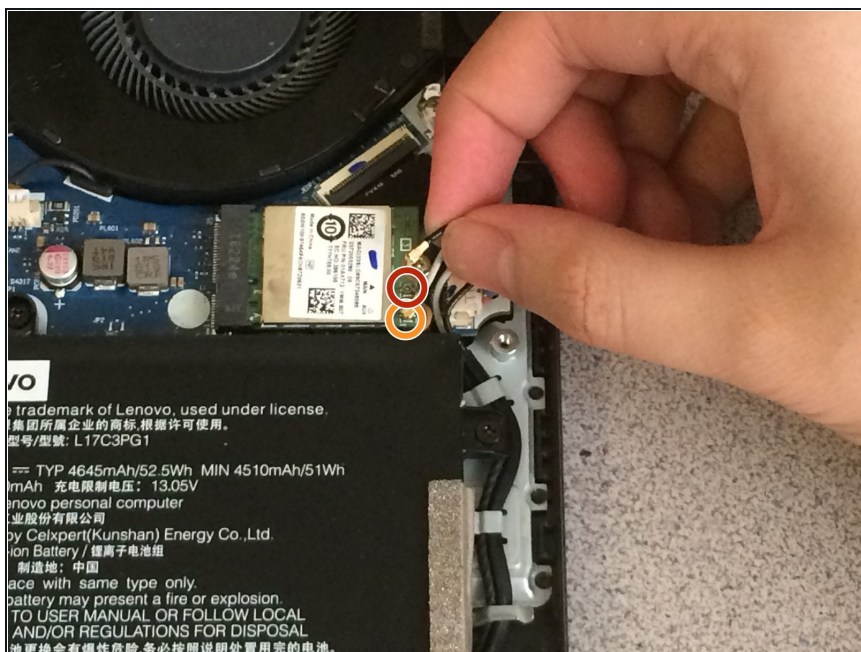
- Remove the single 4 mm screw using a Phillips #0 screwdriver.
- Remove the wireless LAN card.

Step 5



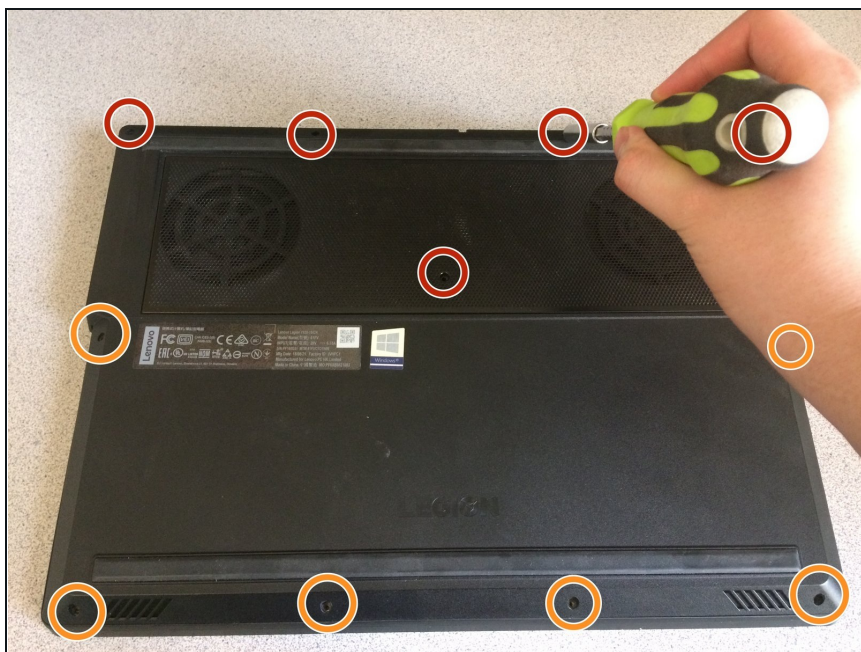
- Insert the new wireless LAN card.
 - Re-insert the 4 mm screw using Phillips #0 screwdriver.
- ① It's normal for the wireless LAN card to pop up slightly. It will fit into place when you screw it back in.

Step 6



- Re-attach the black antenna cable to the top pin on the wireless LAN card.
- Re-attach the white antenna cable to the bottom pin on the wireless LAN card.

Step 7



- Snap the back cover onto the laptop.
- Using a Phillips #0 screwdriver, re-insert the five 7mm screws.
- Using a Phillips #0 screwdriver, re-insert the six 4mm screws.

After replacing the faulty wireless LAN card, you should be able to connect to a wireless network connection. The connection should be stable and not randomly disconnecting. If this doesn't fix your problem, then you may have to check the router or wireless connection point.