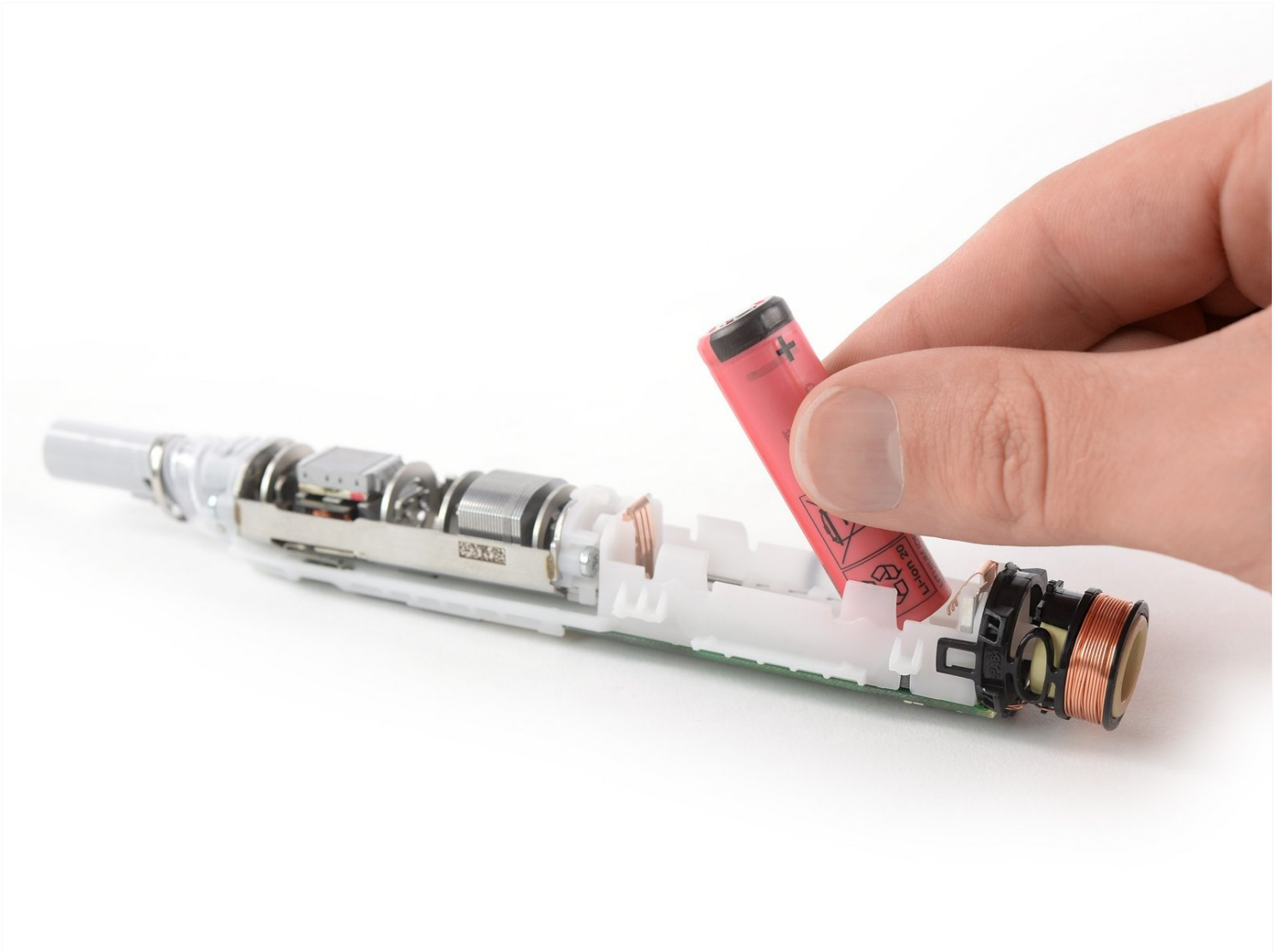




# Oral-B iO Battery Replacement

Use this guide to replace a worn-out or dead...

Written By: Dominik Schnabelrauch



# INTRODUCTION

Use this guide to replace a worn-out or dead battery in your Oral-B iO.

If your battery is swollen, [take appropriate precautions](#). For your safety, **discharge your battery below 25%** before disassembling your toothbrush. This reduces the risk of a dangerous thermal event if the battery is accidentally damaged during the repair.

You'll need the charging station of the Oral-B iO during the battery removal procedure.

## 🔧 TOOLS:

[Spudger](#) (1)  
[Tweezers](#) (1)  
[ESD Safe Blunt Nose Tweezers](#) (1)

## ⚙️ PARTS:

[Sanyo UR14500AC 740mAh Replacement Battery](#) (1)

## Step 1 — Unfasten bottom cap



- ⓘ Before you start, disconnect the charging station from the power socket.
- Flip the charging station of your Oral-B iO upside down.
- Align the three recesses on the iO's silver bottom cap with the notches at the bottom of the charging station.
- Push the toothbrush into the charging station with mild pressure and turn it about 90° counter clockwise to unlock the thread of the bottom cap.

## Step 2 — Bottom cap removal



- Unscrew the bottom cap of your toothbrush.
- Remove the bottom cap.

### Step 3 — Pry up the metal ring



- ① It is possible that toothpaste residues or lime have accumulated underneath the metal ring above the gray rubber gasket. For this reason, the ring may behave somewhat stubbornly during removal.
- Insert one arm of a pair of [tweezers](#) or a small flathead screwdriver underneath the bottom edge of the metal ring sitting above the grey rubber gasket.
- Use ur tool to carefully pry up the metal ring.
  - ① The metal ring is held in place by small plastic clips. During reassembly make sure, it snaps back into place.
- ⚠ When prying up the metal ring be careful not to puncture or tear the grey rubber gasket.

## Step 4 — Remove the metal ring



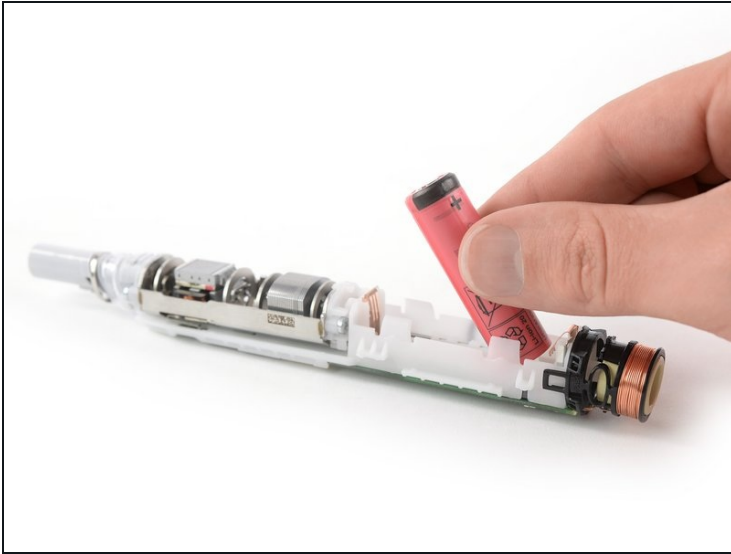
- Use a pair of tweezers or your finger to remove the metal ring.
- ☑ This is a good point during reassembly to clean off toothpaste residues and lime from the gasket and the metal ring. However avoid using liquid cleaners or use them in very small amounts. With the removed metal ring they can run easily inside the toothbrush causing water damage.

## Step 5 — Remove toothbrush assembly



- Remove the brush head from your toothbrush.
- Hold the toothbrush body in one hand and use your thumb to press down the top of the toothbrush assembly.
- Pull the toothbrush assembly out of the opening at the bottom end of the toothbrush body.

## Step 6 — Battery removal



⚠ Do not use excessive force or pry at the battery with metal tools.

- Pull the battery out of its recess on the bottom of the toothbrush assembly.
  - ① In case the battery sits too tight in its recess, you can use a plastic tool like a spudger to pry the battery out of its recess.
- Remove the battery.

⚠ Do not reinstall a damaged or deformed battery, as doing so is a potential safety hazard.

---

If possible, turn on your toothbrush and test your repair before resealing.

Take your e-waste to an [R2 or e-Stewards certified recycler](#).

Repair didn't go as planned? Try some [basic troubleshooting](#), or ask our [Answers community](#) for help.