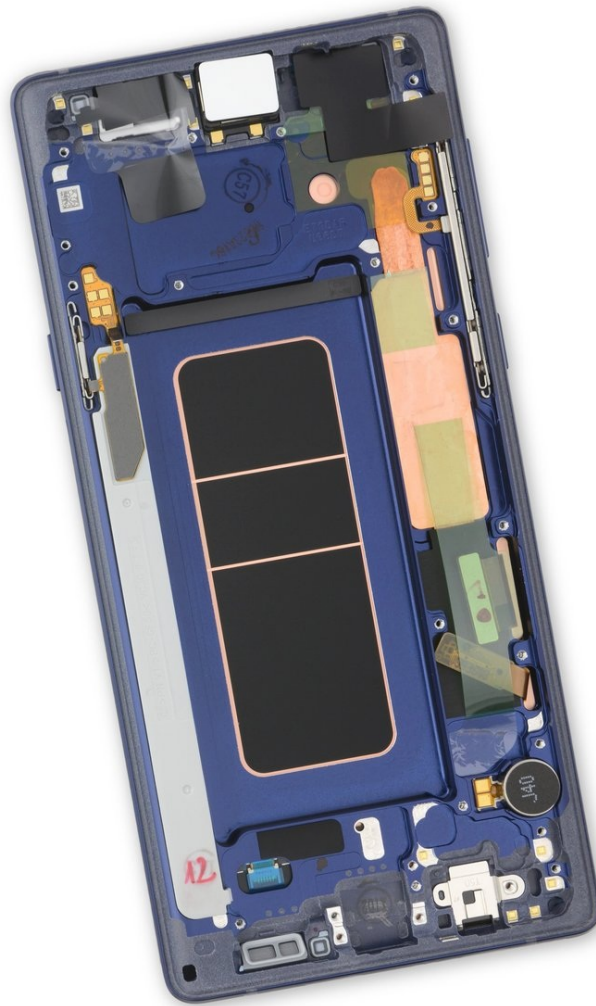




Samsung Galaxy Note9 Display Assembly Replacement

Follow this guide to replace the display...

Written By: Sam Omiotek



INTRODUCTION

Follow this guide to replace the display assembly on your Samsung Galaxy Note9.

TOOLS:

[Suction Handle](#) (1)
[Tweezers](#) (1)
[SIM Card Eject Tool](#) (1)
[iOpener](#) (1)
[iFixit Opening Picks \(Set of 6\)](#) (1)
[Phillips #000 Screwdriver](#) (1)
[Spudger](#) (1)
[iFixit Adhesive Remover](#) (1)

PARTS:

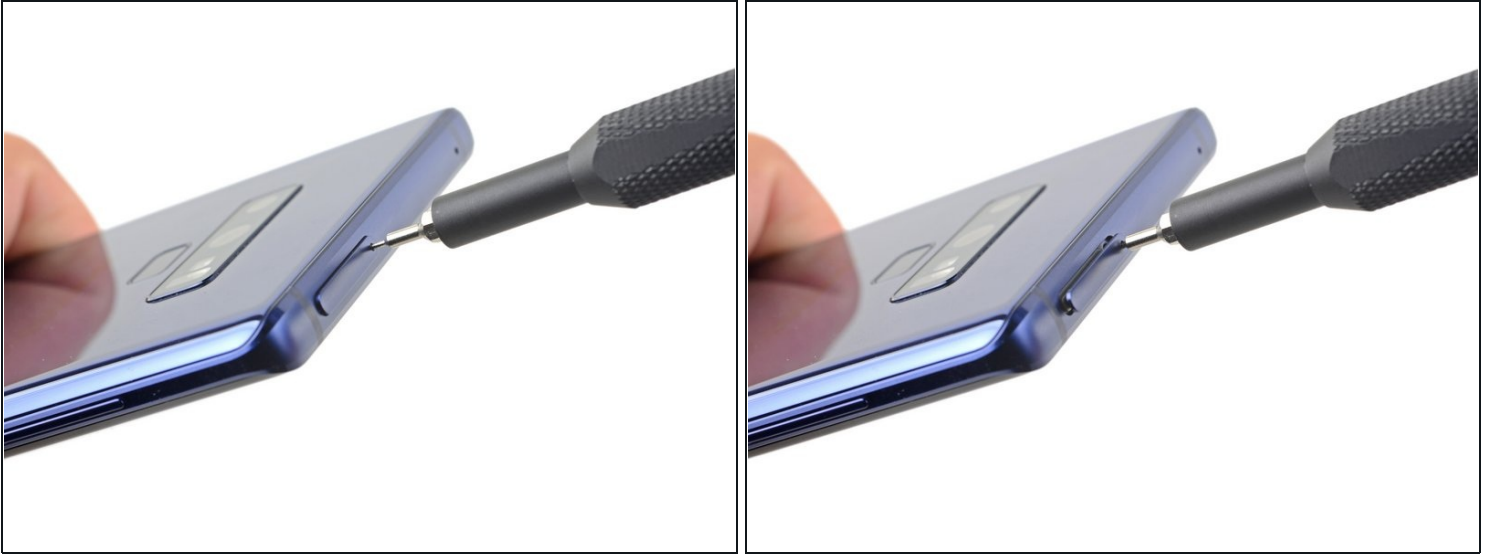
[Galaxy Note9 Rear Cover Adhesive](#) (4)
[Galaxy Note9 Screen](#) (1)

Step 1 — Remove the S-Pen



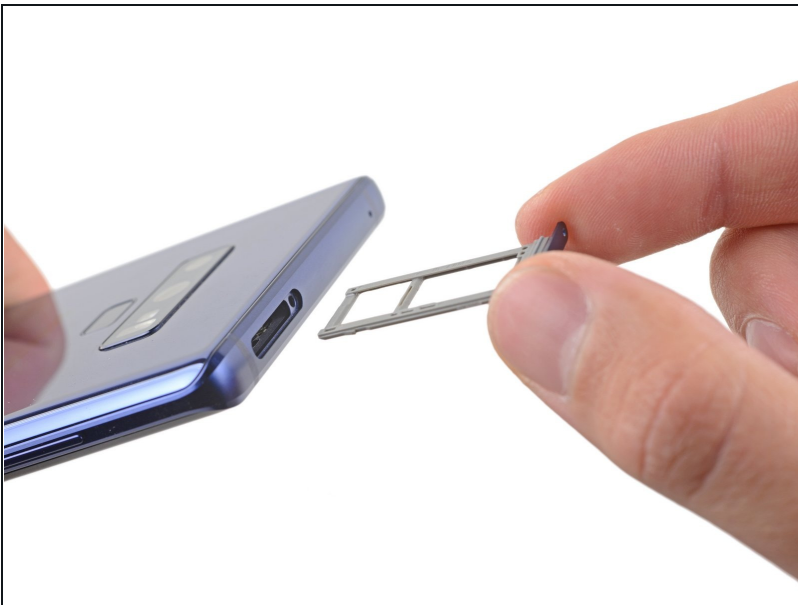
- Press in the bottom of the S-Pen until it clicks.
- Release the S-Pen and it will self-eject.
- Remove the S-Pen.

Step 2 — Eject the SIM card tray



- Insert a SIM card eject tool straight into the hole in the SIM card tray.
- Press to eject the SIM card tray.

Step 3 — Remove the SIM card tray



- Remove the SIM card tray.
- ① The SIM card will fall out of the tray easily.

Step 4 — Apply a heated iOpener



- Power off your phone before beginning disassembly.
- Use a hairdryer, a heatgun, or [prepare an iOpener](#) and apply it to the right edge of the back of the phone for about a minute to soften the adhesive underneath.

Step 5 — Insert an opening pick



- Apply a suction handle to the back cover.
 - Lift with a suction handle to create a gap between the back cover and the frame of the phone.
 - Insert an opening pick into the gap.
- ⓘ If the glass is badly cracked, [cover it in packing tape](#) to create a surface for the suction cup to adhere to.

⚠ If the adhesive won't budge, apply more heat, **not** excessive force. Too much force could break the glass.

Step 6 — Cut through the adhesive



- Note that there is more adhesive along the top edge and around the camera bezel than around the rest of the phone.
- Cut carefully around the left edge near the fingerprint sensor or you risk damaging the ribbon cable inside.
- ⓘ If, at any point, the adhesive feels stubborn, apply more heat—not more force.

Step 7 — Slide the opening pick



- Starting from the center, cut the adhesive up and down the right side with an opening pick.

⚠ Do not insert the pick more than halfway into the phone when cutting near the fingerprint sensor or cameras, or you risk damaging internal components.

Step 8



⚠ Be careful near the corner, as the glass is very weak. Apply more heat at any time if the adhesive becomes stuck.

- Leave an opening pick in the upper-right corner.
- Use another opening pick to cut the adhesive around the bottom-right corner.
- Leave that opening pick in the phone.

Step 9



- Use a heat gun or hair dryer or apply a heated iOpener to the left side of the rear panel for at three minutes to soften the adhesive underneath.

Step 10



⚠ Be careful near the corners, as the glass is weakest there.

- Insert an opening pick into the lower-left corner of the rear panel.
- Using another opening pick, cut the adhesive along the left edge of the rear panel.

⚠ Don't insert an opening pick in more than halfway on the left edge near the fingerprint sensor or you may damage the ribbon cable inside.

i It is fine if opening picks fall out as the back cover becomes separated.

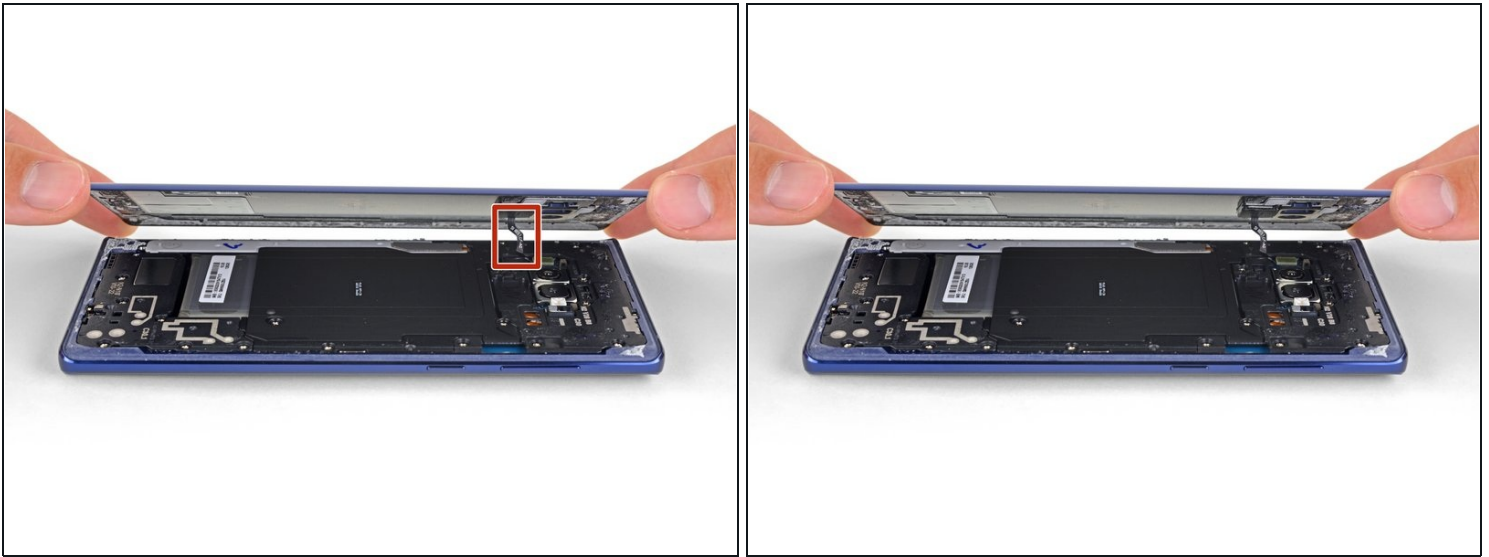
Step 11



- Using the inserted opening pick, carefully cut the adhesive around the upper-left corner of the rear panel.
- Finally, cut the last of the adhesive along the top of the phone.

i Use an iOpener, hair dryer, or heat gun to apply more heat as needed where you are cutting the adhesive.

Step 12



- Separate the right side of the rear cover first.
- Tilt the cover up along the left edge to expose the fingerprint sensor ribbon cable.

⚠ Do not pull out the fingerprint sensor ribbon cable yet.

ⓘ The fingerprint sensor cover might stay attached to the midframe.

Step 13 — Disconnect the fingerprint sensor



- Use the tip of a spudger to pry the fingerprint sensor ribbon cable up and out of its socket.

Step 14

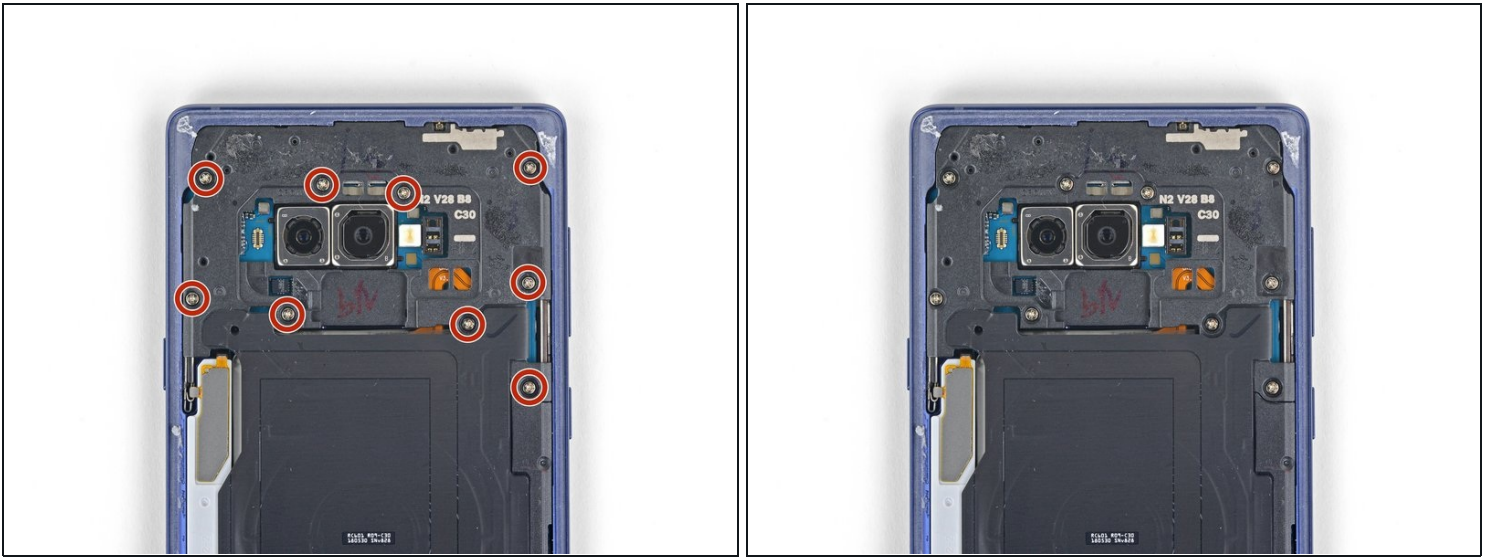


- Remove the back cover.

★ To re-install the back cover:

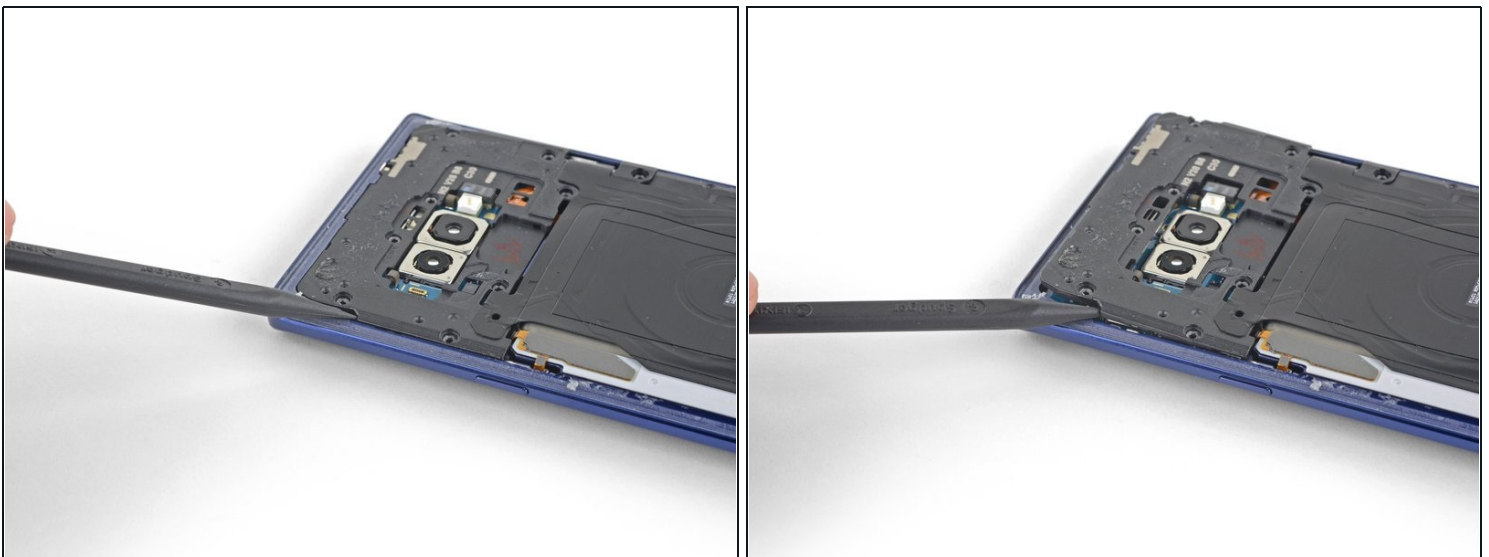
- Use tweezers to peel away any remaining adhesive from the phone's chassis. Then clean the adhesion areas with high concentration isopropyl alcohol (at least 90%) and a lint-free cloth to prep the surface for the new adhesive. You don't have to clear out adhesive down to the plastic but larger pieces should be removed.
- Turn on your phone and test your repair before installing new adhesive and resealing the phone.
- Carefully apply the new adhesive to the back cover, then line up one edge of the glass against the phone chassis and firmly press the glass into the phone.

Step 15 — Remove the upper midframe



- Use a Phillips screwdriver to remove the nine 4 mm screws securing the upper midframe.

Step 16



- Insert the tip of a spudger into the upper-left corner of the upper midframe.
- Pry the upper midframe out of the phone.

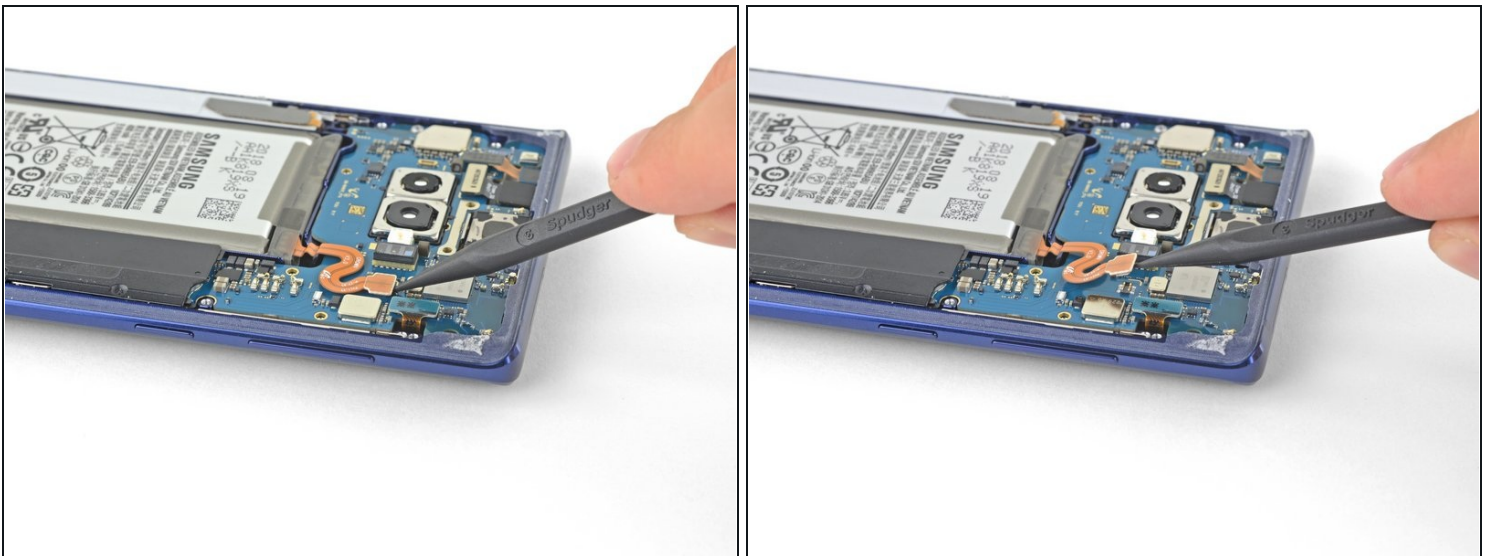
i The upper midframe snaps into and out of place.

Step 17



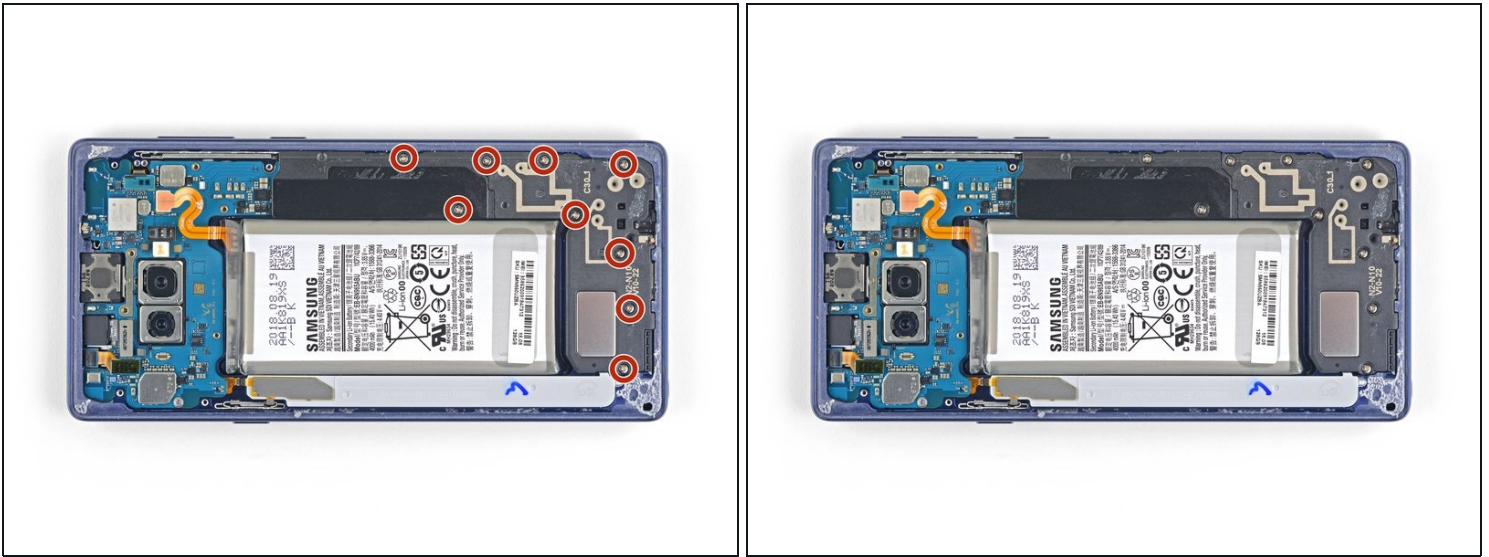
- Peel the wireless charging coil off the battery starting with the left side.
- ⓘ The adhesive is weak but you can use an opening pick to cut it if necessary.
- ★ During reassembly start by snapping the midframe into place first before adhering the wireless charging coil.

Step 18 — Disconnect the battery



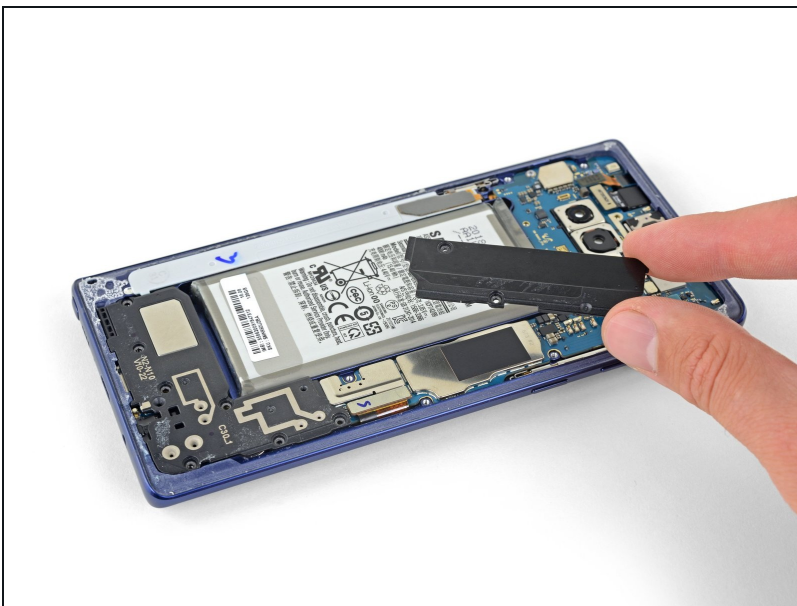
- Use the tip of a spudger to disconnect the orange ribbon cable connecting the battery to the motherboard.

Step 19 — Remove the midframe



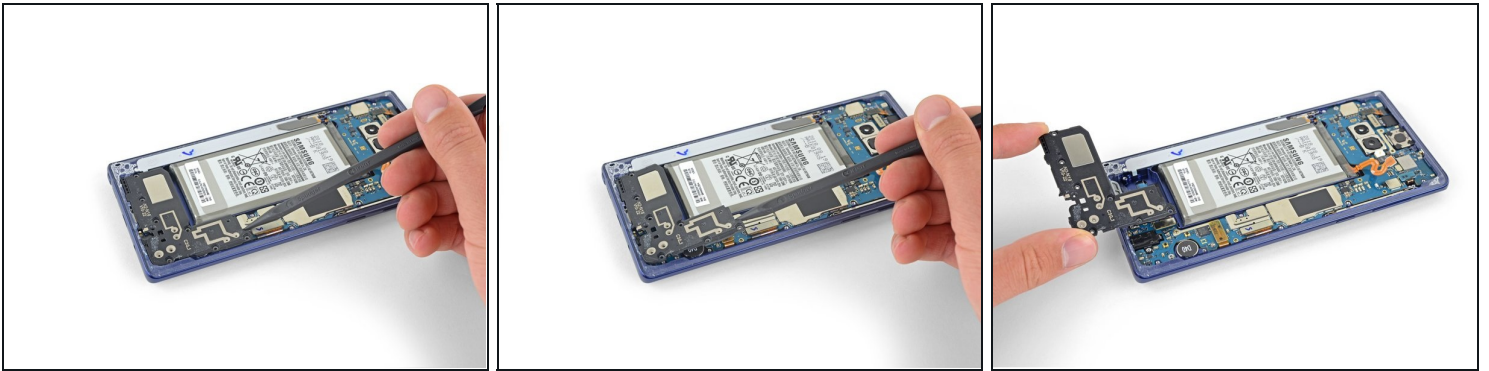
- Remove the nine 4 mm Phillips screws from the plastic cover next to the battery.

Step 20



- Remove the plastic cover next to the battery.

Step 21



- Insert the tip of a spudger into the top of the lower midframe.
- Pry the lower midframe out from the phone.
- ⓘ The lower midframe snaps into and out of place.
- Remove the lower midframe.

Step 22 — Remove the front camera



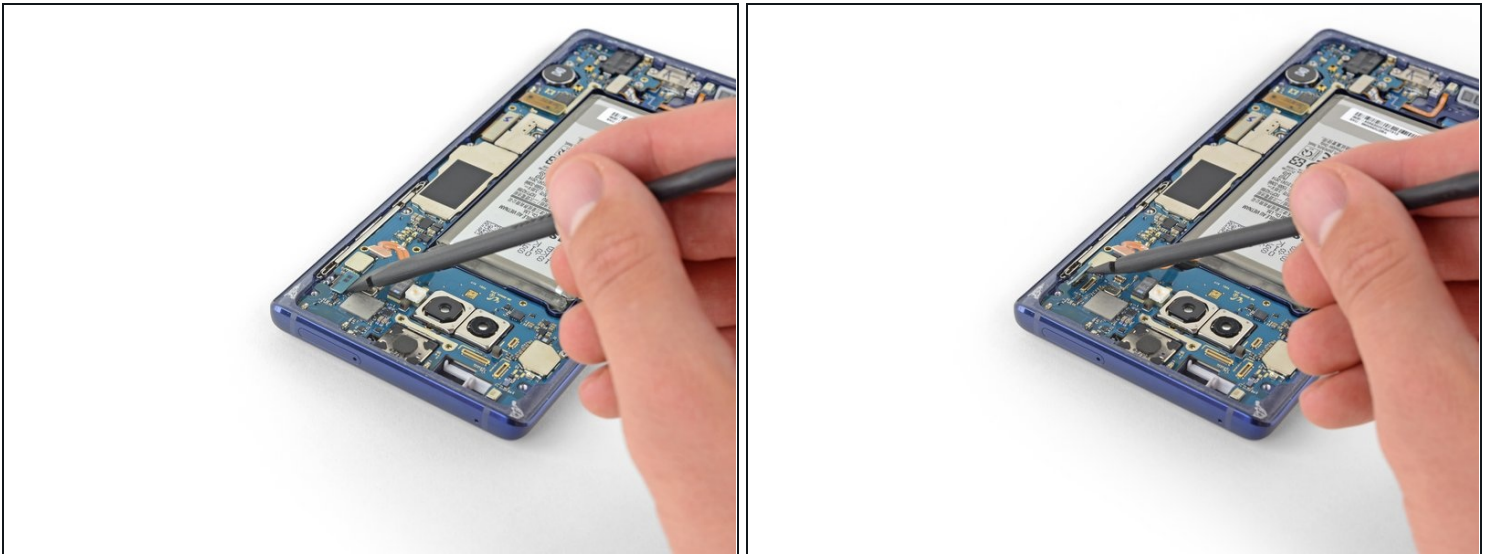
- Use the tip of a spudger to pry the front camera connector straight up and out of its socket.
- Use tweezers to remove the front camera.

Step 23 — Remove the iris scanner



- Use the tip of a spudger to disconnect the iris scanner from the motherboard.
- Use tweezers to remove the iris scanner.

Step 24 — Disconnect the front sensor array



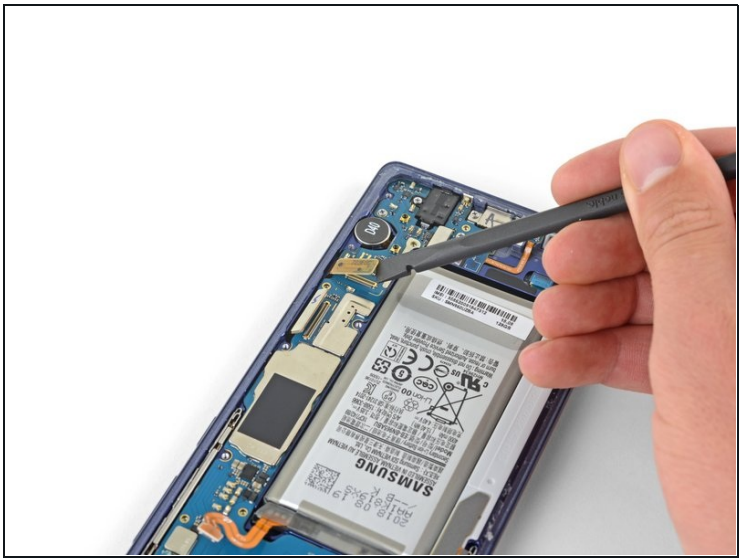
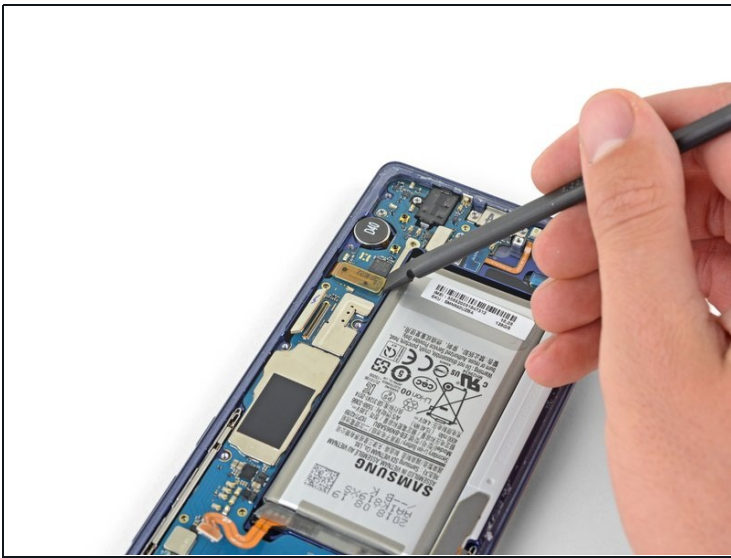
- Use the flat end of a spudger to pry the front sensor connector out of its socket.

Step 25 — Disconnect the display assembly



- Use the flat end of a spudger to disconnect the display cable from the motherboard.

Step 26



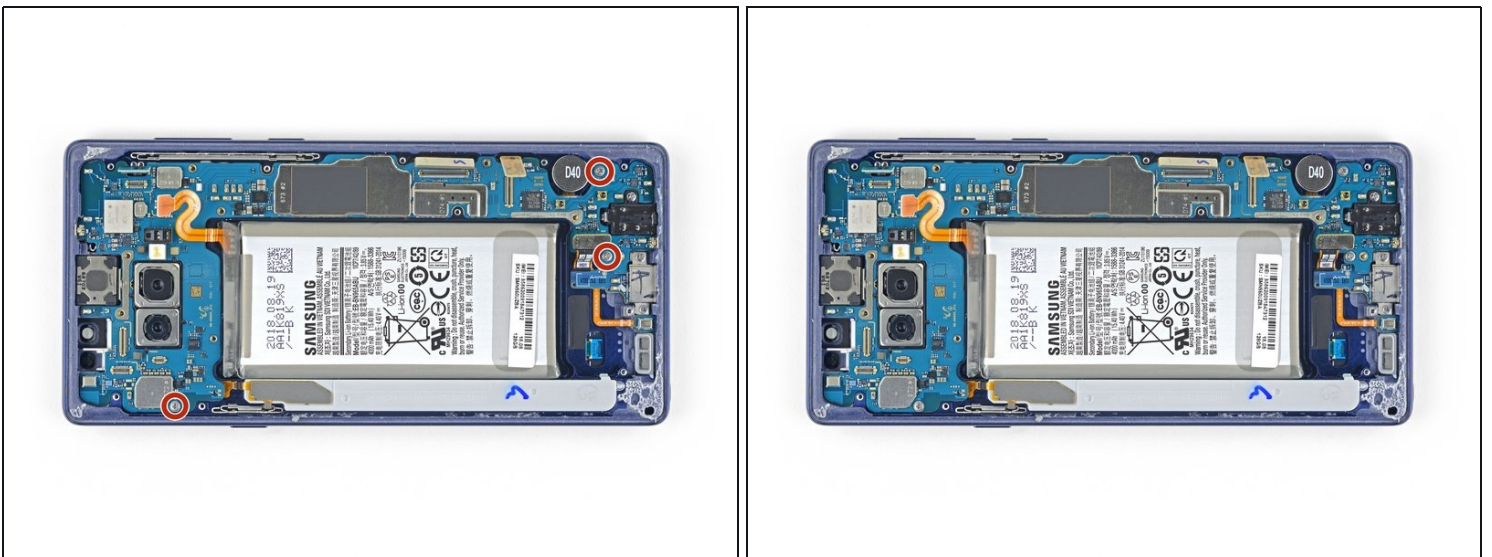
- Use the flat end of a spudger to disconnect the touchscreen cable from the motherboard.

Step 27 — Disconnect the charging assembly



- Use the flat end of a spudger to disconnect the charging assembly from the motherboard.

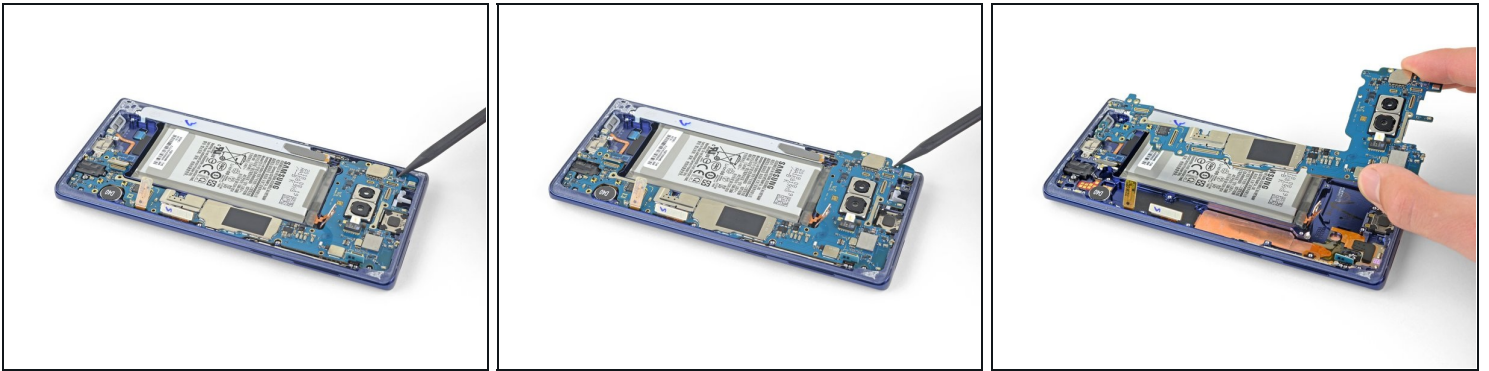
Step 28



- Remove the three 4 mm Phillips screws securing the motherboard.

☐ There are triangles next to the holes indicating the motherboard screw locations.

Step 29



- Use a spudger to gently lift the motherboard from the upper-left corner.
- Carefully remove the motherboard.

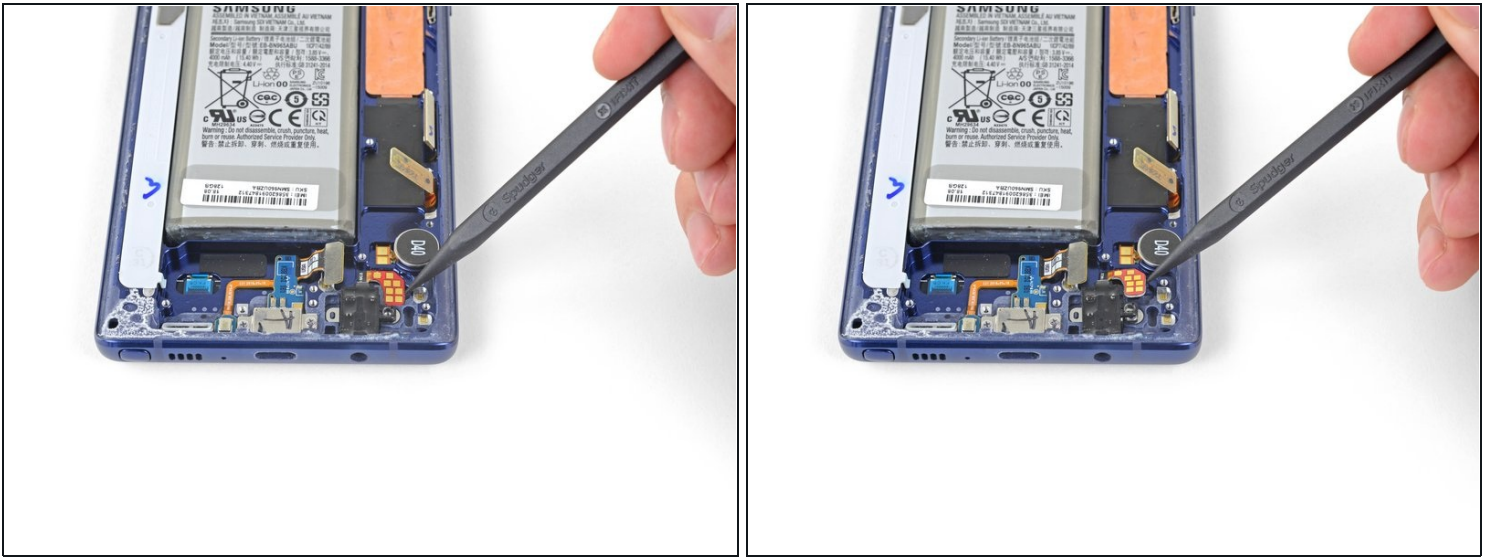
⚠ Move the ribbon cables out of the way as necessary. Do not pull the motherboard out if it becomes snagged on any cables.

Step 30 — Remove the headphone jack assembly



- Remove the 3.2 mm Phillips screw from the headphone jack.

Step 31



- Insert the tip of a spudger into the notch next to the headphone jack contact points.
 - Pry the contact board straight up to free it from the adhesive underneath.
- ⓘ If the contact board is difficult to separate, apply a drop of 90% isopropyl alcohol into the notch and allow it to soften the adhesive. Then, try again.

Step 32



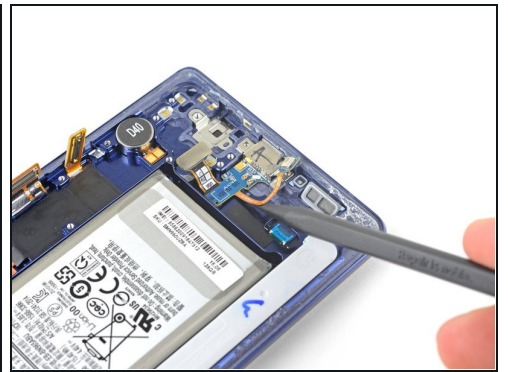
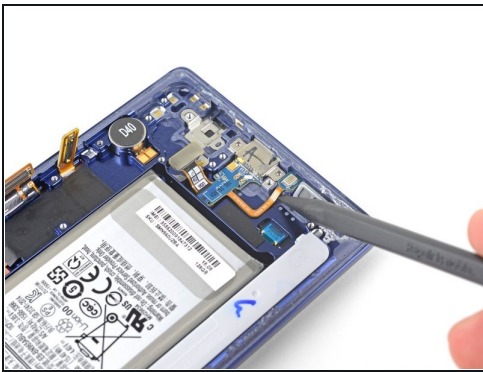
- Use a pair of tweezers to remove the headphone jack assembly.

Step 33 — Remove the Charging Assembly



- Remove the two 3.2 mm Phillips screws from the charging assembly.

Step 34



- Use a spudger to lift the microphone out from its housing.

Step 35



- Use an opening pick to separate the charging assembly from the phone.

Step 36



- Use a pair of tweezers to remove the charging assembly.

Step 37 — Remove the battery



- Apply a few drops of 90% isopropyl alcohol into the battery well along the bottom and upper-left corner of the battery.
- Wait a couple of minutes for the alcohol to soften the adhesive under the battery.
- Hold the phone at various angles to help the alcohol flow under the battery.

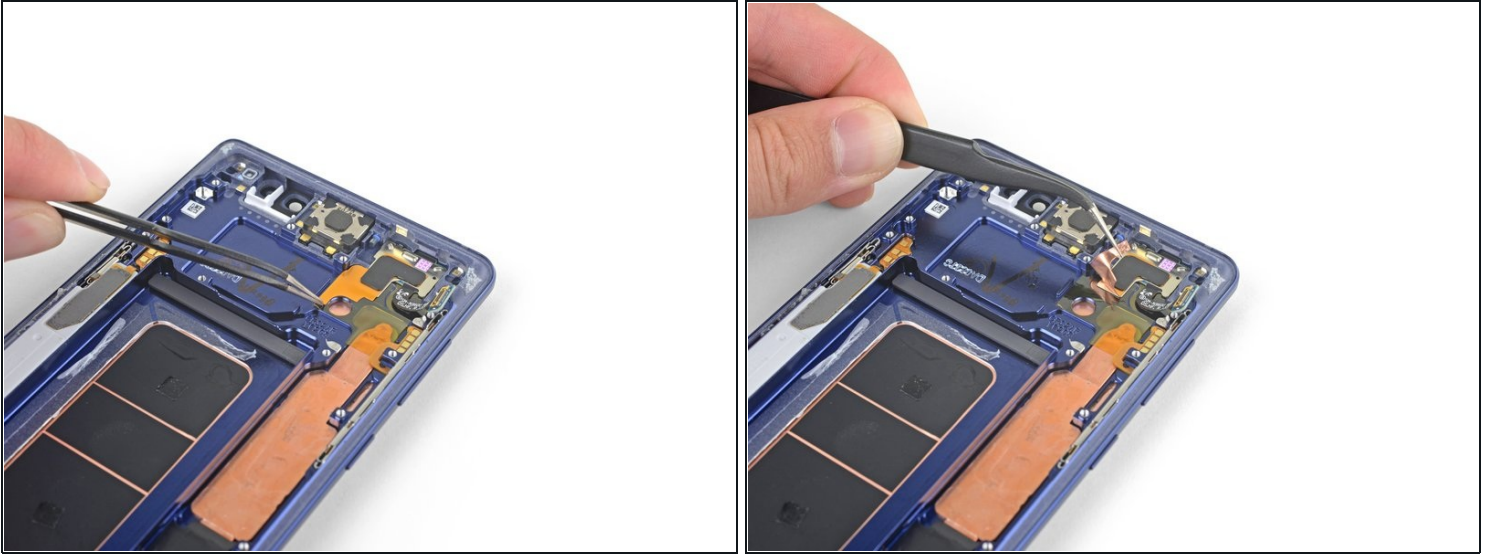
Step 38



- Apply a suction cup to the battery.
 - Lift the battery straight up until there is a gap large enough to insert the opening pick.
 - Insert an opening pick underneath the bottom edge of the battery and twist to loosen the battery adhesive.
 - Remove the battery.
- ⓘ It may take multiple attempts to get the suction cup to adhere. Apply is as close to the center of the battery as possible and avoid the white sticker at the bottom of the battery.

⚠ Do not bend the battery.

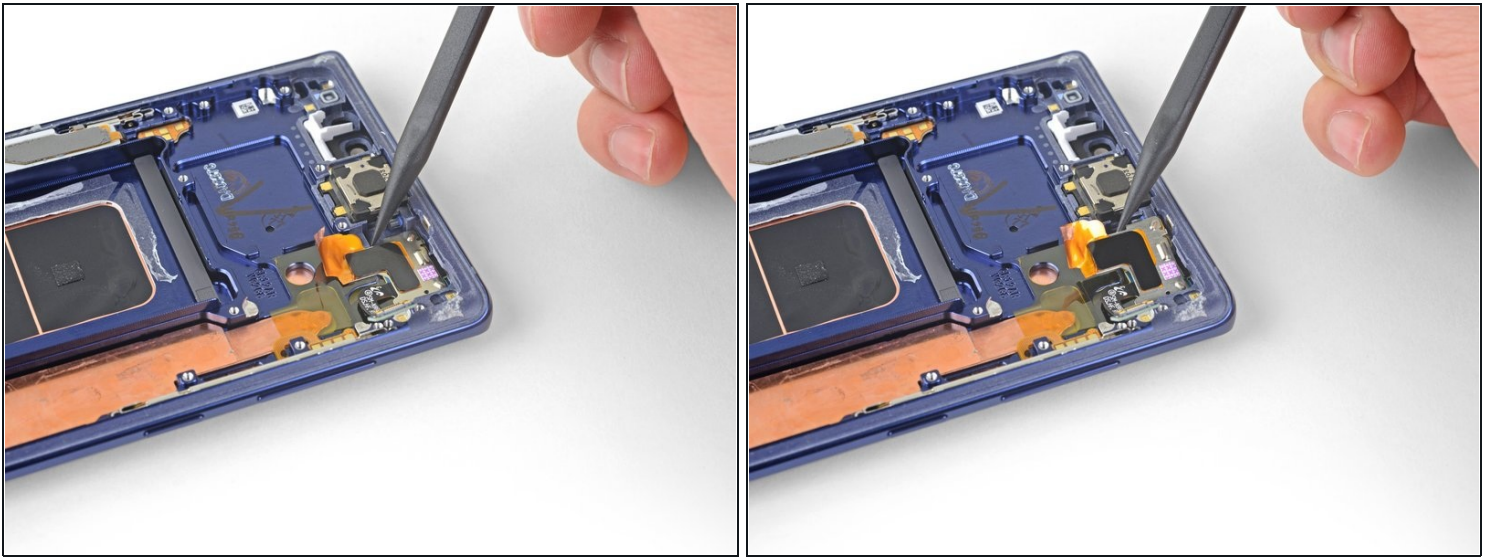
Step 39 — Remove the front sensor array



- Use a pair of tweezers to peel back the adhesive-backed copper foil.
- Stop peeling once you reach the sensor array.

⚠ Be careful not to tear the foil.

Step 40



- Use a spudger to lift the left side of the front sensor array and separate the adhesive the rest of the way.

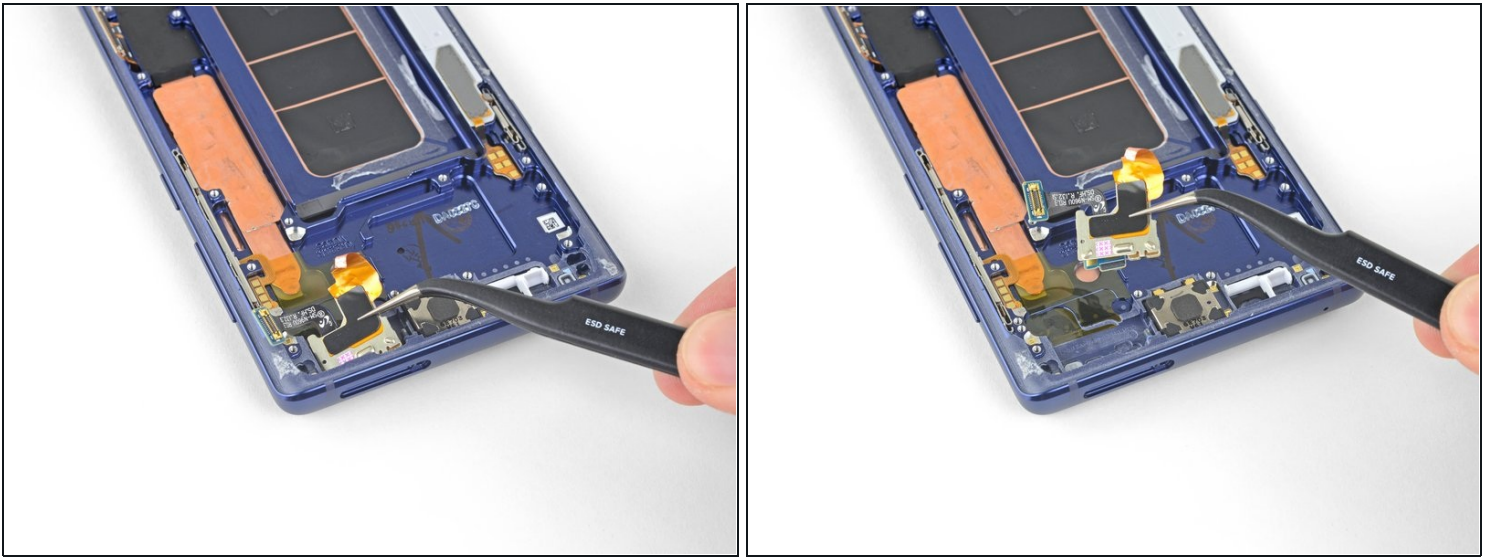
⚠ The front sensor array is still connected to a ribbon cable that is adhered to the phone. Do not try to remove the front sensor array yet or you will damage it.

Step 41



- Carefully slide an opening pick under the front sensor array ribbon cable to cut the adhesive underneath.

Step 42



- Use a pair of tweezers to remove the front sensor array.
- ⓘ Only the display assembly remains.
- ☑ Before you begin reassembly, compare the new display assembly with the original and transfer any remaining components if necessary.

To reassemble your device, follow the above steps in reverse order.

Take your e-waste to an [R2 or e-Stewards certified recycler](#).

Repair didn't go as planned? Check out our [Answers community](#) for troubleshooting help.

Compare your new replacement part to the original part—you may need to transfer remaining components or remove adhesive backings from the new part before installing.