



# Dell Inspiron n5050 Optical Drive Replacement

How to remove an optical drive for replacement.

Written By: Tyler



---

## INTRODUCTION

The optical drive is held in by a single screw. This guide will help you get to that screw and slide the optical drive out of its bay.

---



### TOOLS:

- [Phillips #00 Screwdriver](#) (1)
  - [Spudger](#) (1)
-

## Step 1 — Battery



- Flip your laptop over to view the bottom and locate the two locks.

## Step 2



- Slide the two locks away from each other.
- ❗ Sliding these locks will loosen the battery to allow removal.

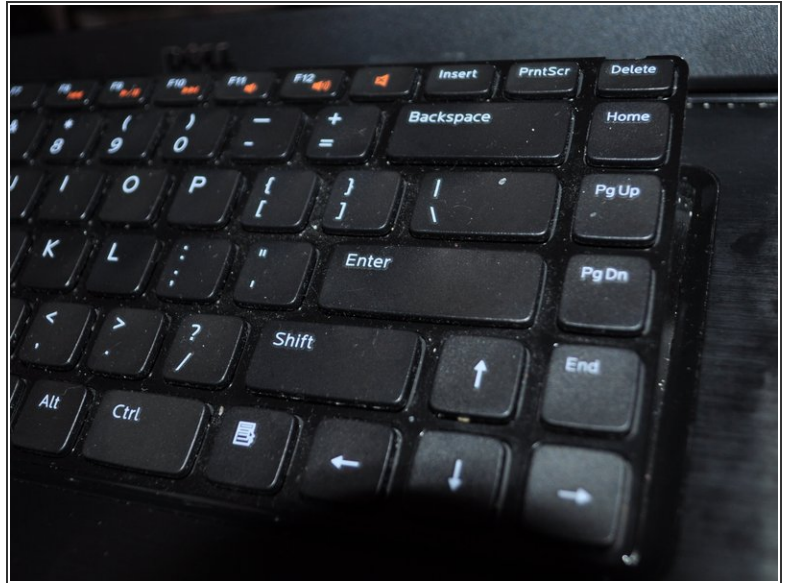
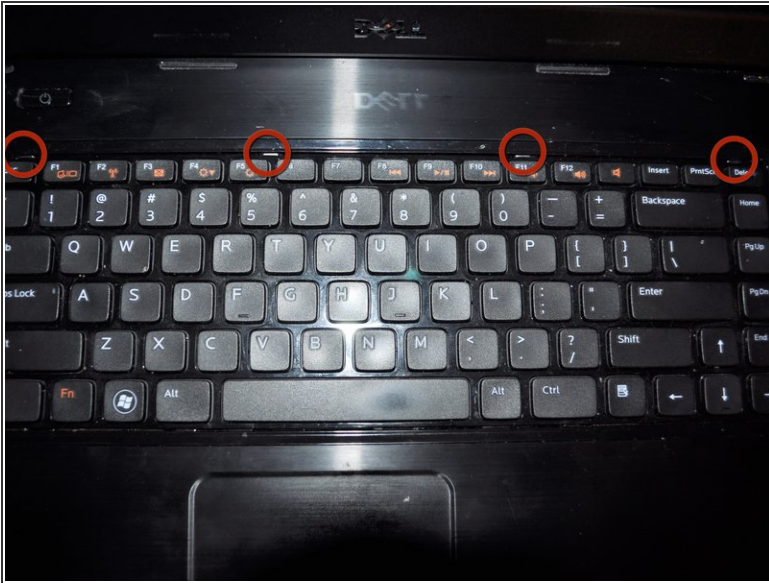


## Step 3



- Pull battery out of the laptop.
- ⓘ Your laptop's battery should be completely removed.

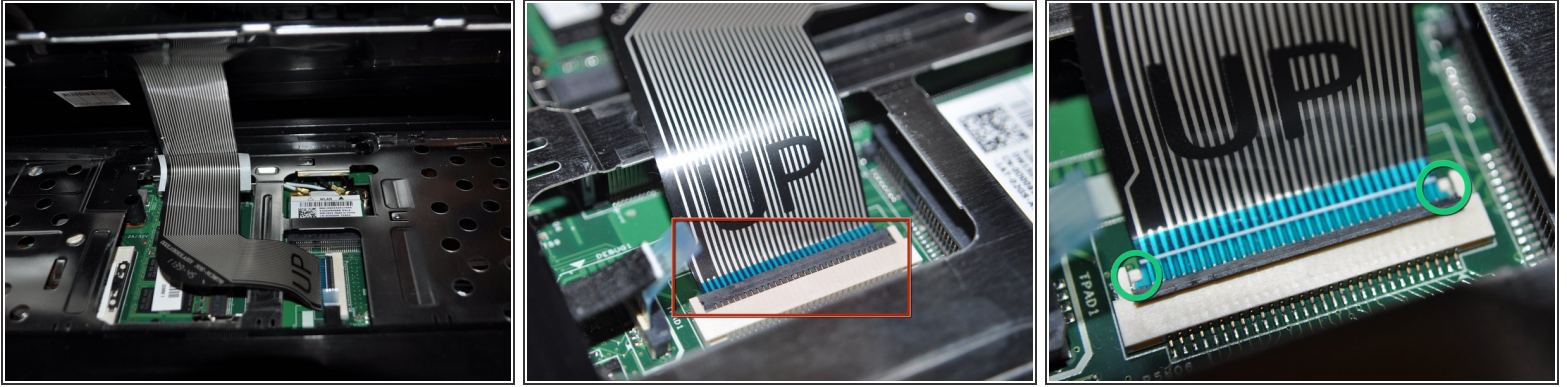
## Step 4 — Keyboard



- Flip the laptop right side up. Open the laptop.
- Gently press in the four retaining tabs along the top of the keyboard with a spudger, one at a time.
- ⓘ After the first tab is released, gently lift up on the keyboard so it doesn't lock again. Finish the other three tabs while gently lifting up on the keyboard. The keyboard will hinge up along the bottom.

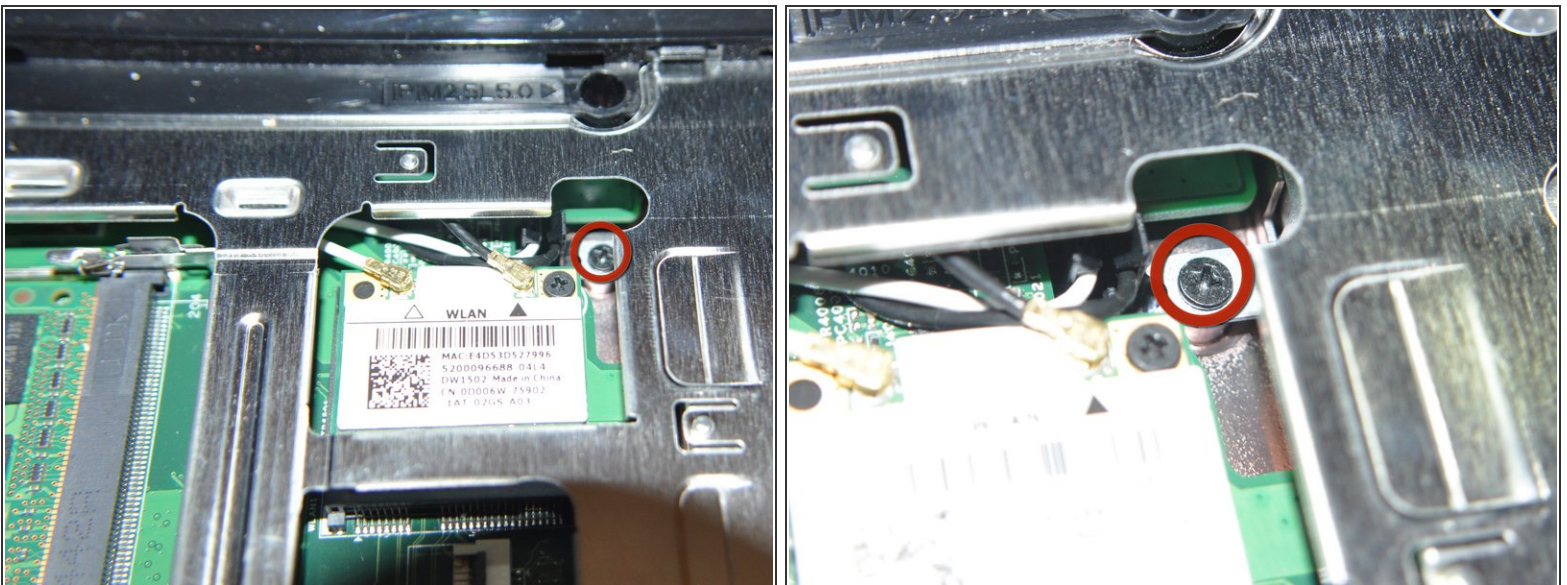


## Step 5



- Gently flip the data cable latch away from the data cable with flat side of spudger.
  - Lift the cable up and out.
  - When reinstalling cable, there are two retainer wings on the sides of the cable that the cable that lock onto the bottom of the cable latch area. When these are in place the cable is properly inserted.
- i** For removing the optical drive you don't need to disconnect the keyboard ribbon cable.

## Step 6 — Optical Drive screw



- Unscrew the screw next to the wireless card.

## Step 7 — Unseat optical drive



- Stand laptop on its side.
- Use the flat end of the spudger to unseat the optical drive.
- ⓘ It works best with a twisting motion of the spudger.

To reassemble your device, follow these instructions in reverse order.