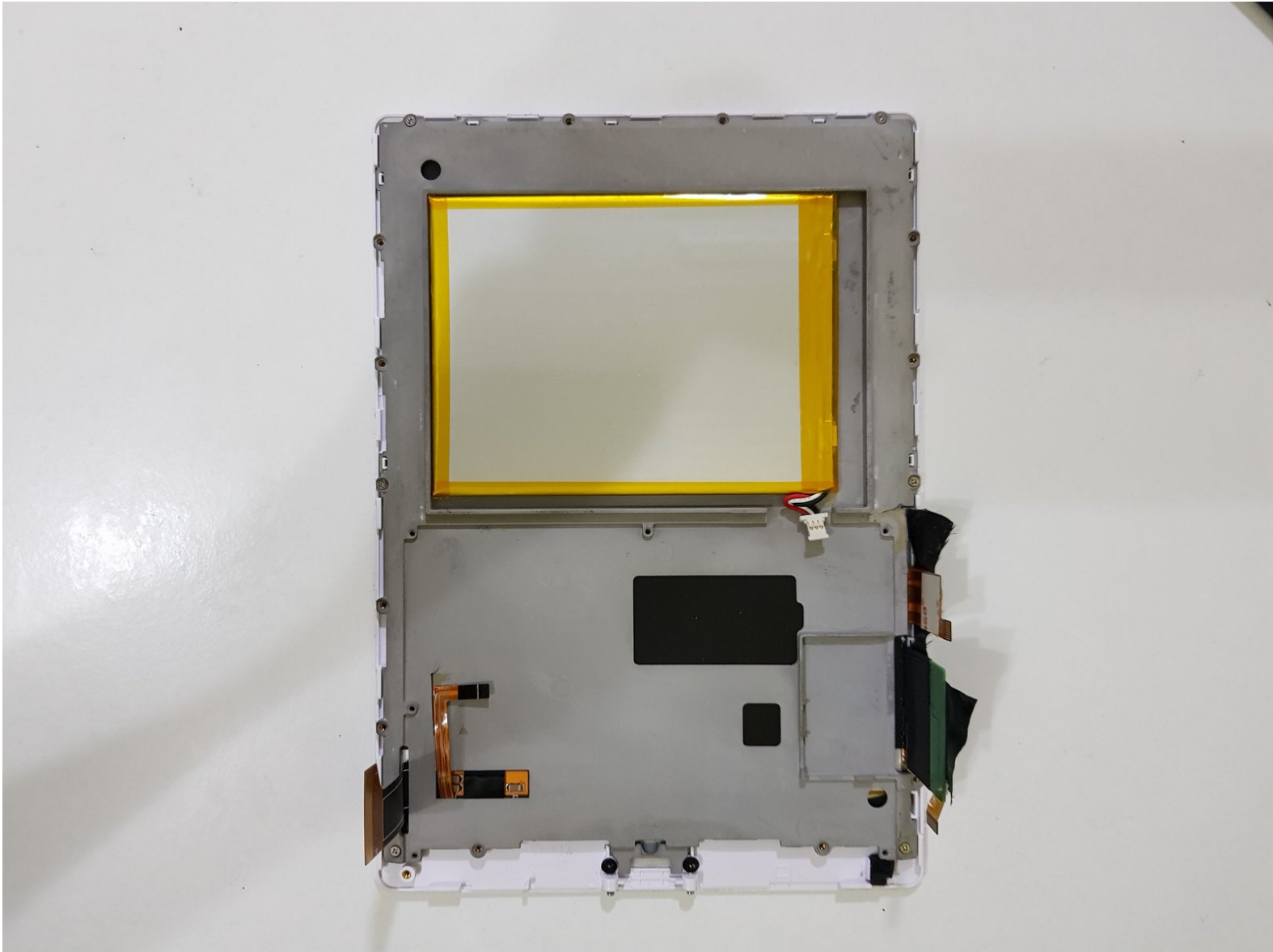




Likebook Muses Display Replacement

Written By: Kevin Bhasi





TOOLS:

- [T2 Torx Screwdriver](#) (1)
- [iFixit Opening Tool](#) (1)
- [iFixit Opening Picks \(Set of 6\)](#) (1)
- [Phillips #00 Screwdriver](#) (1)
- [J00 JIS Screwdriver](#) (1)
- [ESD Safe Tweezers Blunt Nose](#) (1)
- [Spudger](#) (1)



PARTS:

- [Kapton Tape](#) (1)
- [Electrical Tape in 6 Assorted Colors](#) (1)

Step 1 — Power off



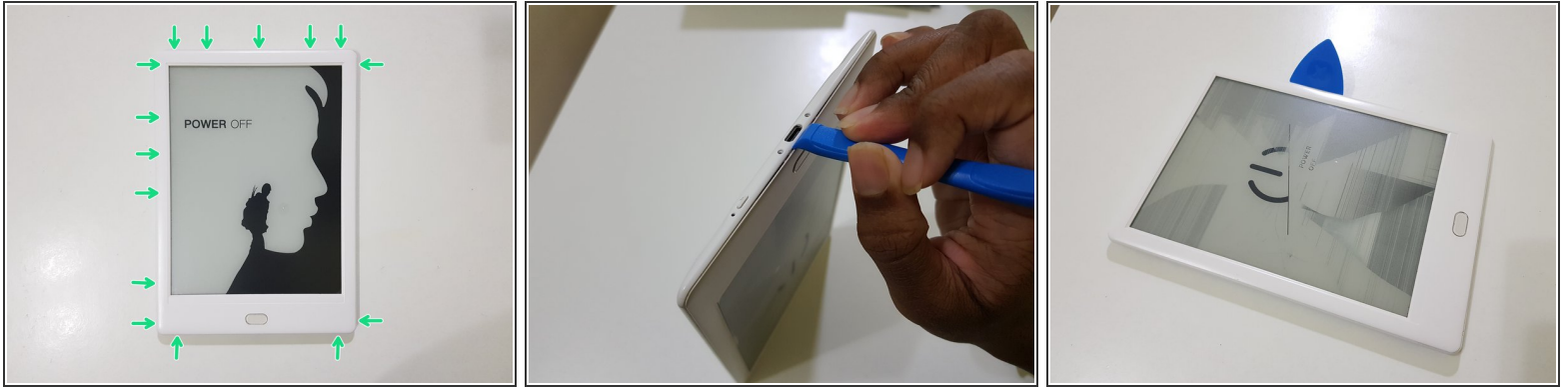
- Power off the tablet by holding down the power button (on the bottom) and tapping "Power off" on screen, then wait 10-15 seconds for the underlying Android system to shut down.

Step 2 — Rear Cover



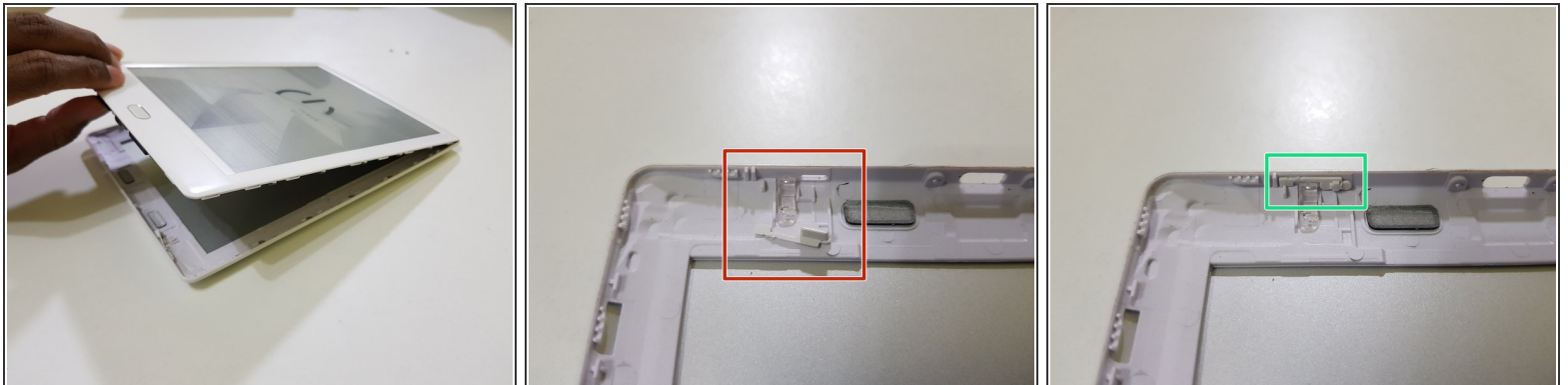
- Unscrew the two Torx T2 screws surrounding the USB port.
- **Image needed: showing just the bottom in order to highlight screws in blue**

Step 3



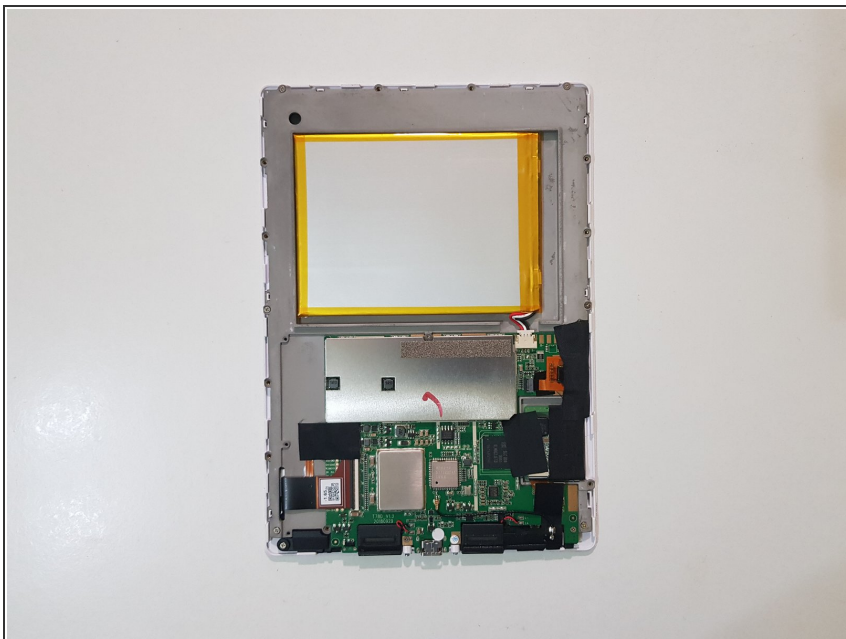
- Use the opening tool to pry at the lip in between the bezel and rear cover,
- then slide in your opening pick with the flat end,
- and slide it around to undo these clips.

Step 4



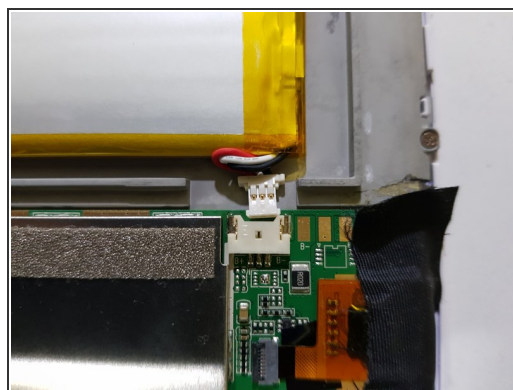
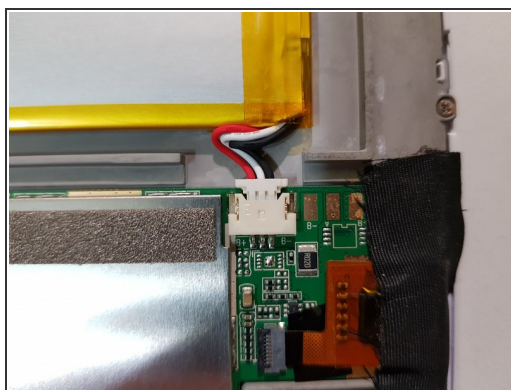
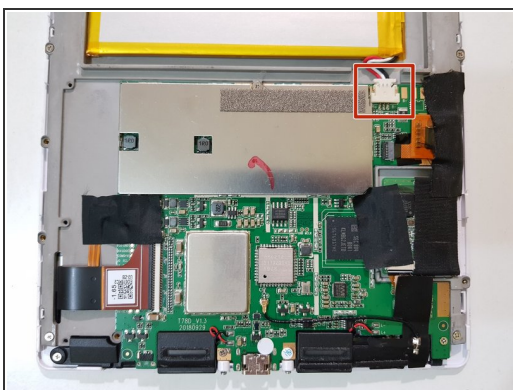
- (Note to self: Try opening the side using opening tools)
 - After releasing the clips, lift the front bezel out.
- ☑ The extension piece for the power button can fall out. Don't lose this!

Step 5



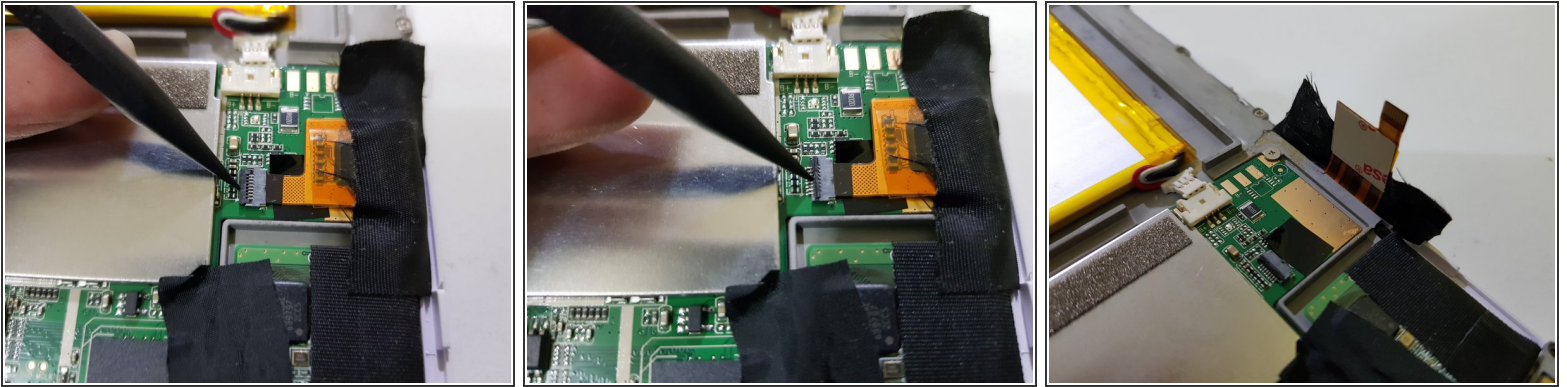
- The rear cover has been removed.

Step 6 — Mainboard



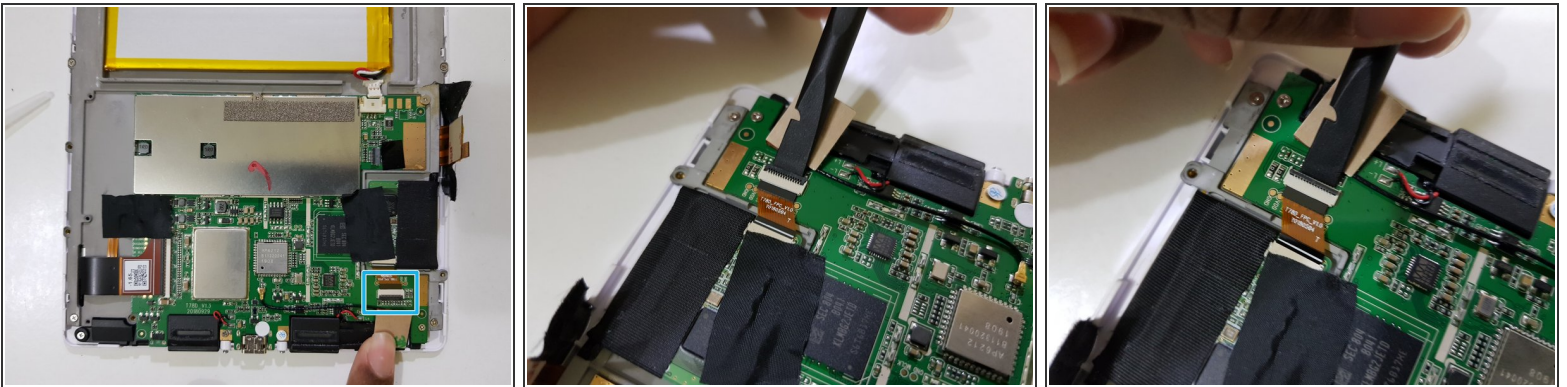
- Disconnect the battery.
- ⓘ Due to the placement of the battery, the connector may not come out all the way.

Step 7



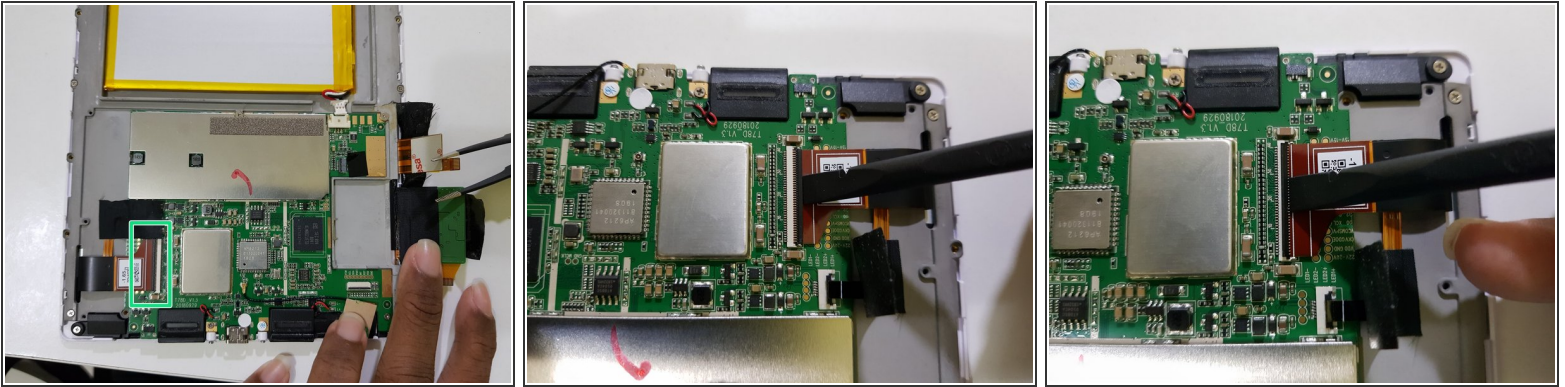
- Using the pointed end of a spudger, disconnect the touch panel.

Step 8



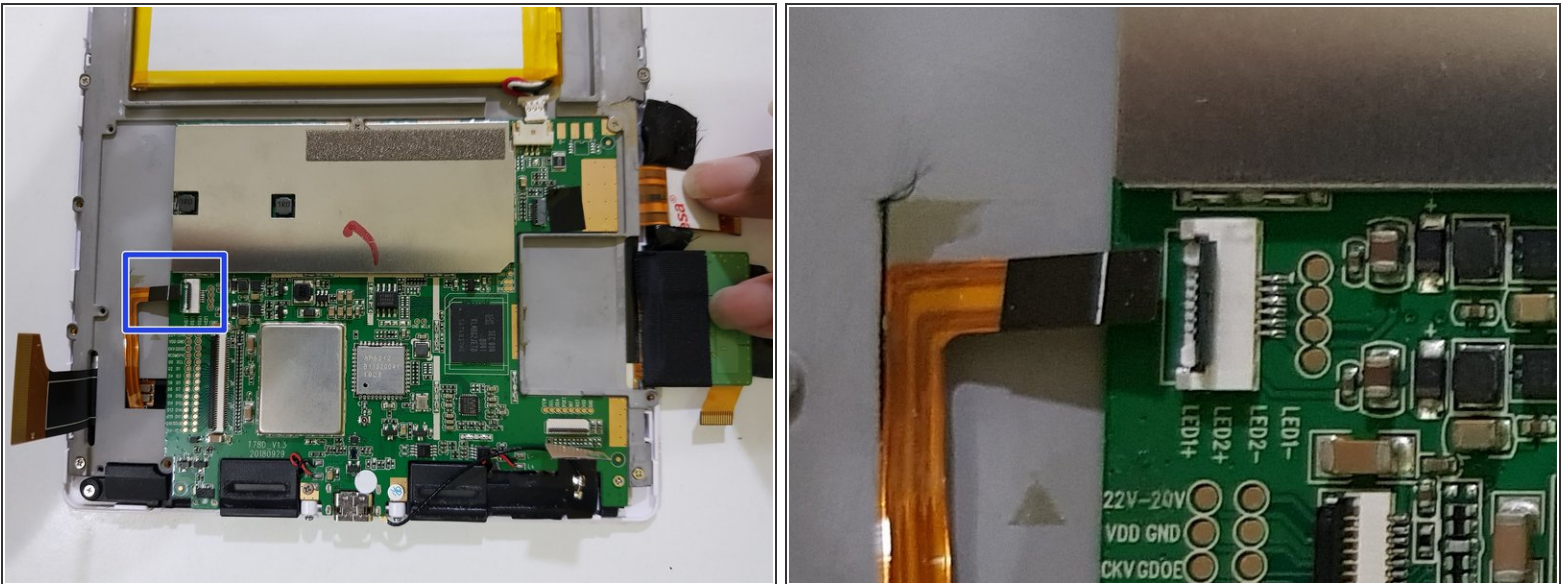
- Disconnect the pen input controller.

Step 9



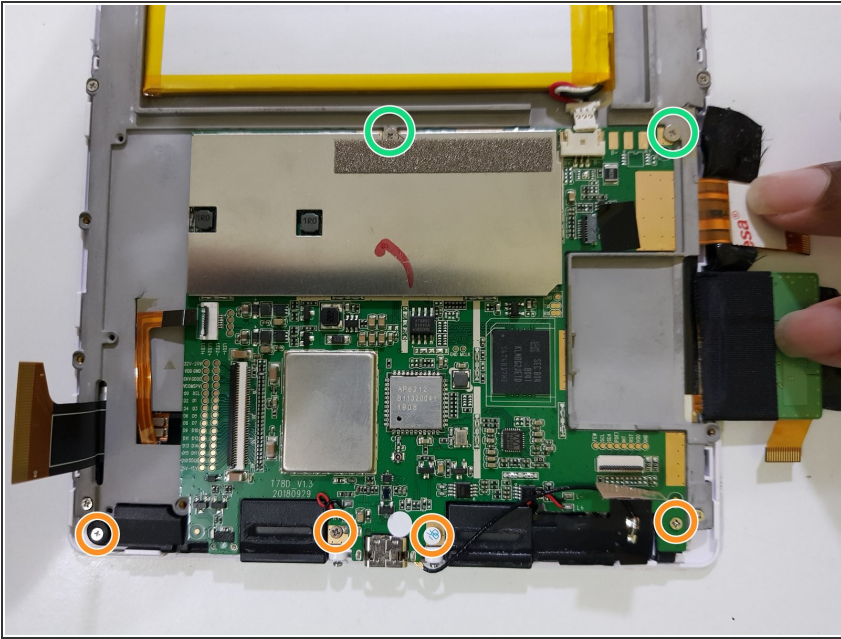
- Lift up part of the tape covering the frontlight connector.
- Using the flat end of your spudger, disconnect the display.

Step 10



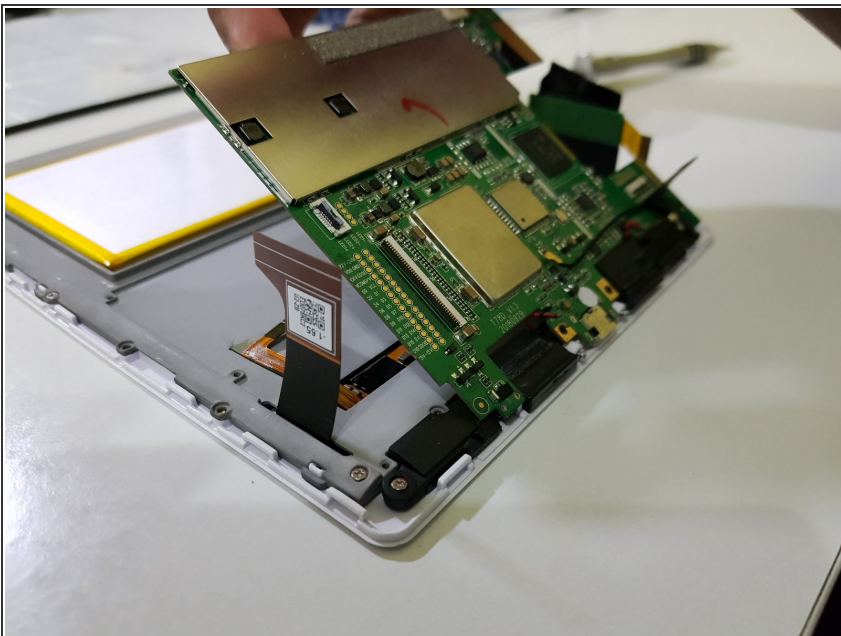
- Peel the tape the rest of the way
- Using the pointed end of your spudger, disconnect the frontlight.

Step 11



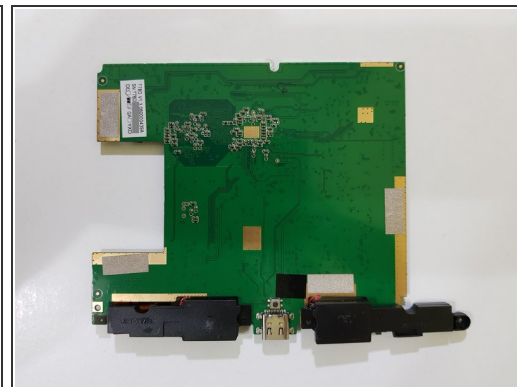
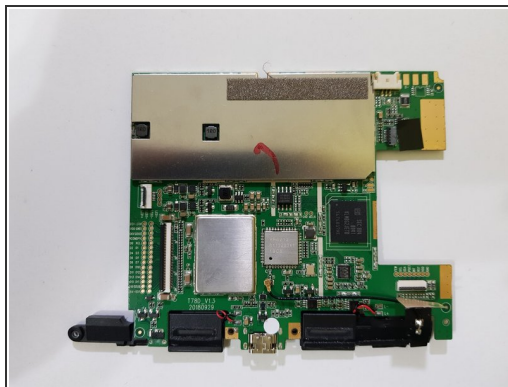
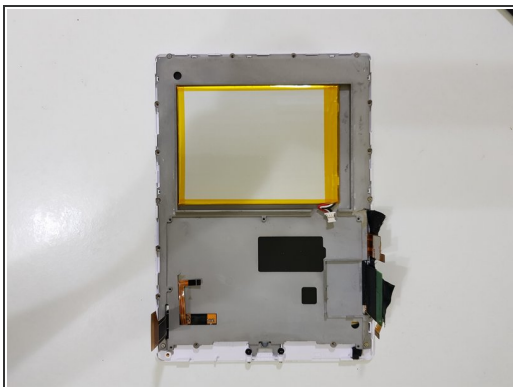
- Remove these screws using your J00 screwdriver (or a PH00 screwdriver if you don't have one).
- Remove these screws using your PH00 screwdriver.
- ❗ One of these screws has a tamper detection sticker pasted over the screw head.
 - You should be able to poke the screwdriver through it.

Step 12



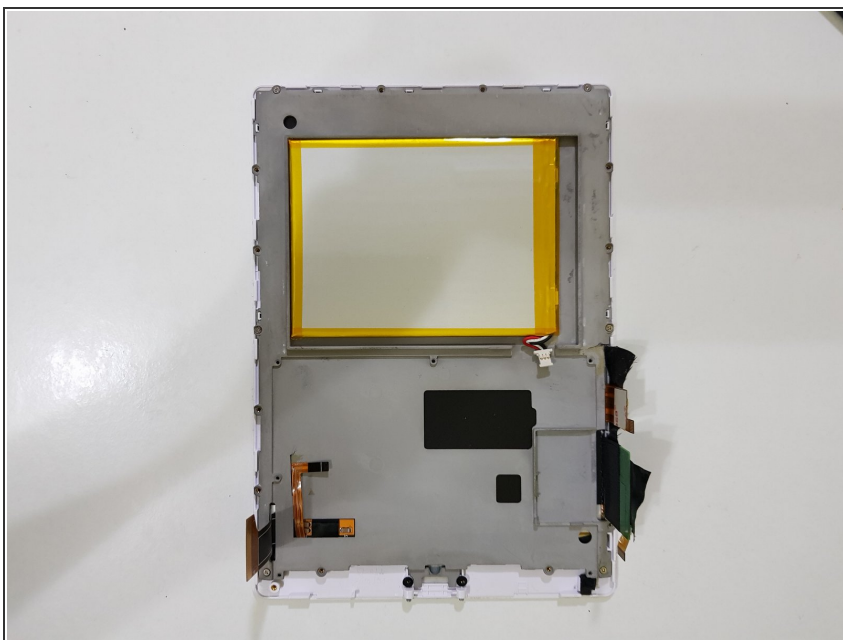
- Lift the mainboard out from the top,
- ★ The speaker connections are only held in with solder, and may break if you're not careful.

Step 13



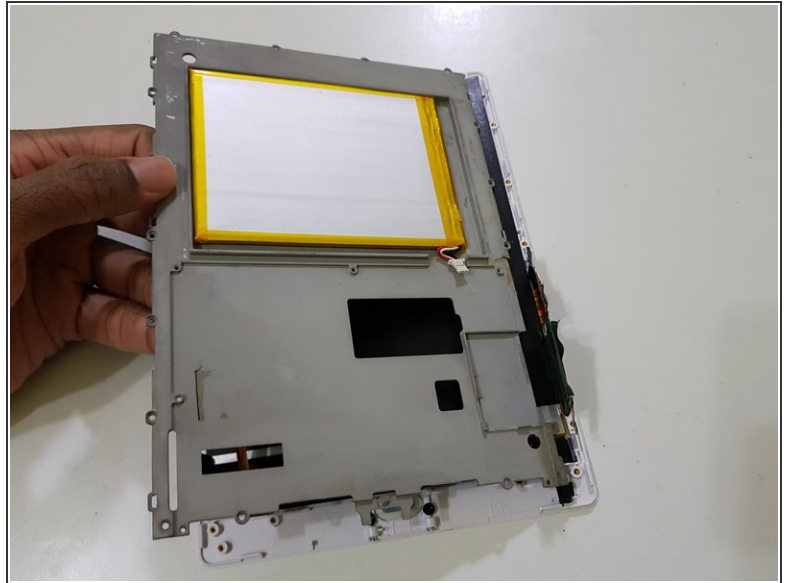
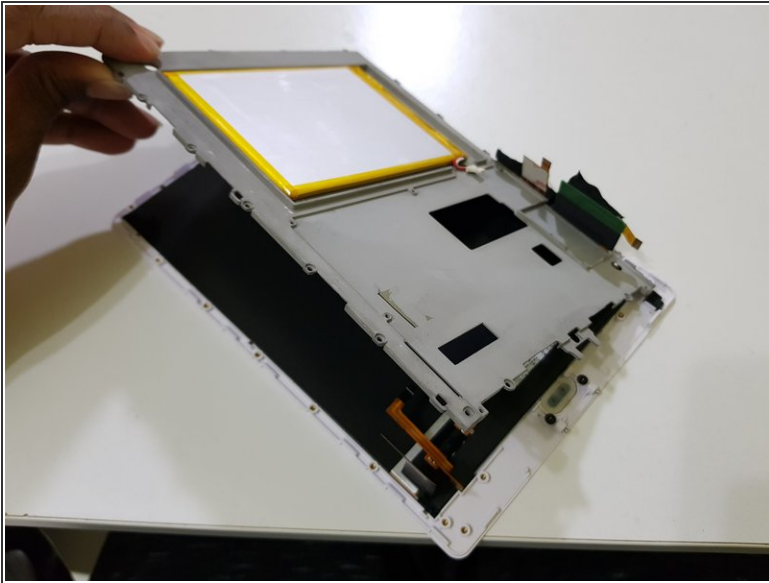
- The mainboard has been removed.

Step 14 — Display



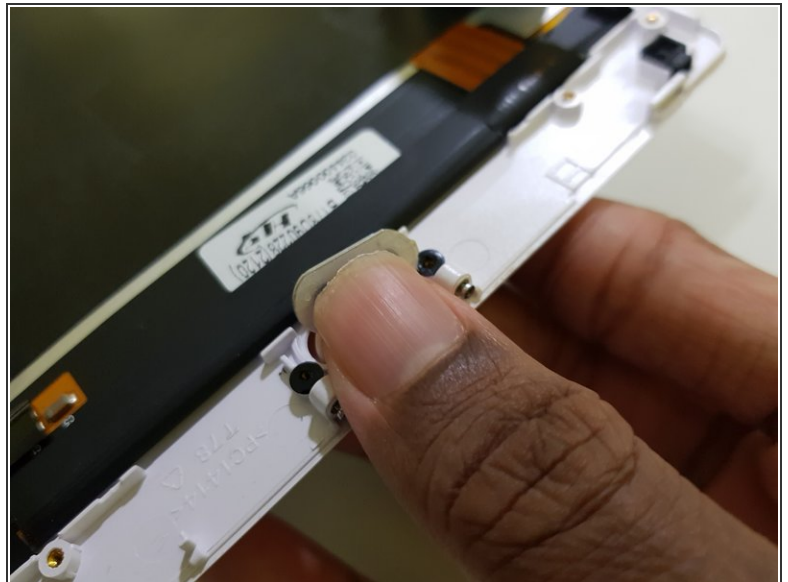
- Using your J00 screwdriver, remove these screws if any are present in these holes.
- ⓘ Your device may include more or less screws than the one shown in these images.

Step 15



- Lift the mid-frame from the left and pull towards the left.

Step 16



- Use your finger to pop out the Back button.

Step 17



- (placeholder: steps for removing the display from the bezel)

Step 18 — If you received a Likebook Mars display



i Some sellers may send you a Likebook Mars display claiming that it's for the Likebook Muses.

- If so, please contact the seller or read reviews/descriptions, which will most likely mention having to transplant the pen digitiser over.

i This is where this guide goes from "difficult" to "very difficult".

- Here's how to tell:
 - Shiny back instead of a black back
 - 3 connections instead of 4
 - "T80D" on the label on the back of the display, instead of "T78D"
- The Likebook Mars (model T80D) is the predecessor to the Likebook Muses (model T78D), lacking pen input, and thus lacks a "Notes" tab on the Home screen's bottom navigation and a "Annotations" tab on the "Read" tab.

Step 19



- (placeholder: about testing the display)
- If you want to, you can test the display to make sure that it's functioning before proceeding to pull away the display and touch cables, and transplanting the pen digitiser from the previous display.
- You'll need a piece of paper large enough to prevent the EPD panel from rubbing up against the midframe and getting scratched.
 - Insert it between the midframe and display assembly.

⚠ Don't leave it running with the back cover removed for too long, as this can cause damage to the display controller, resulting in the display freezing and/or not being able to refresh properly.

Step 20 — Likebook Mars display modifications - part 1



- You will need to peel the pen digitiser off the damaged EPD panel.

To reassemble your device, follow these instructions in reverse order.

This document was generated on 2022-07-11 02:46:45 AM (MST).

