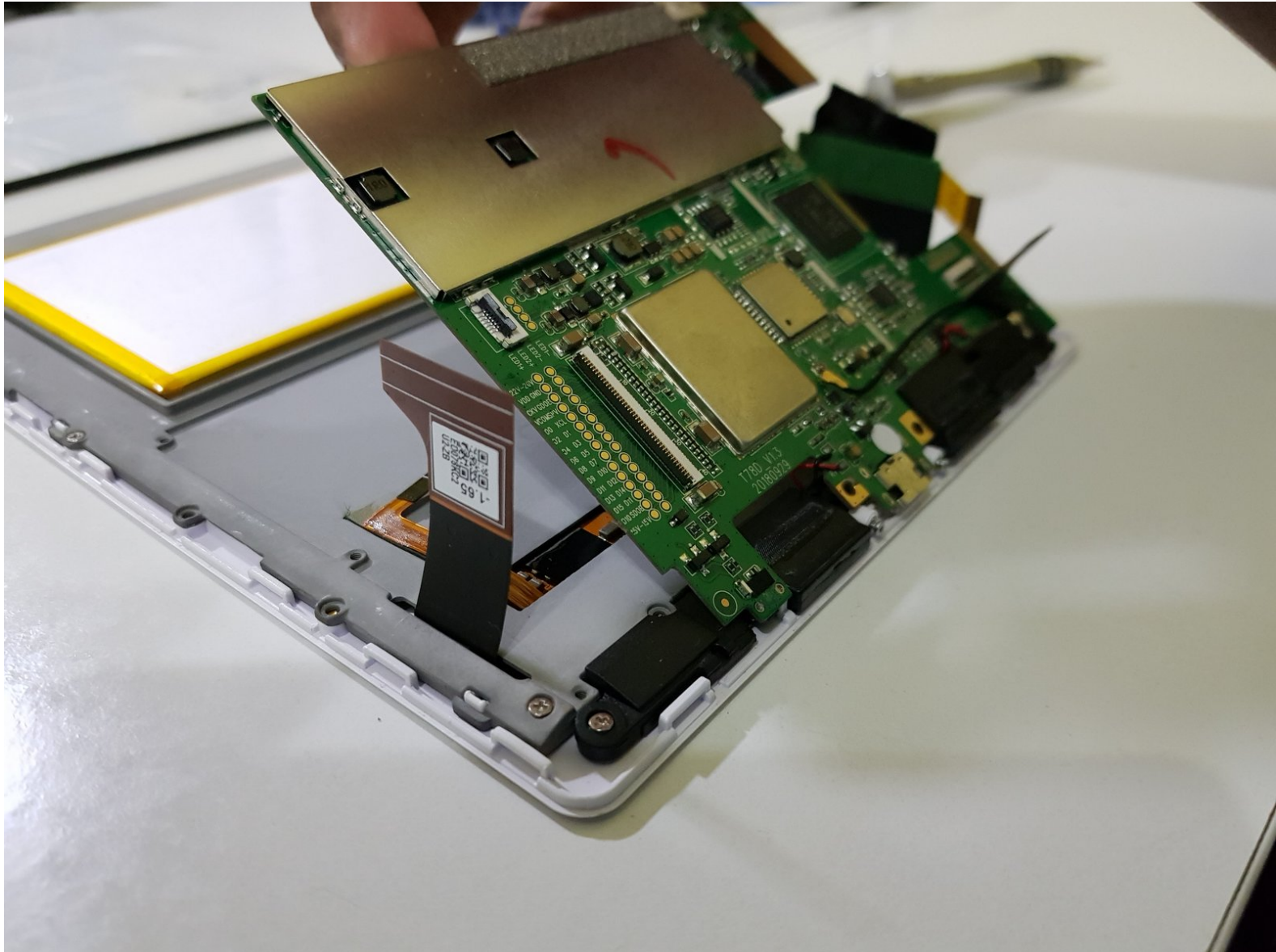




Likebook Muses Motherboard Replacement

Written By: Kevin Bhasi



 **TOOLS:**

- [T2 Torx Screwdriver](#) (1)
- [iFixit Opening Tool](#) (1)
- [iFixit Opening Picks \(Set of 6\)](#) (1)
- [Phillips #00 Screwdriver](#) (1)
- [J00 JIS Screwdriver](#) (1)
- [ESD Safe Tweezers Blunt Nose](#) (1)
- [Spudger](#) (1)

 **PARTS:**

- [Kapton Tape](#) (1)
- [Electrical Tape in 6 Assorted Colors](#) (1)

Step 1 — Power off



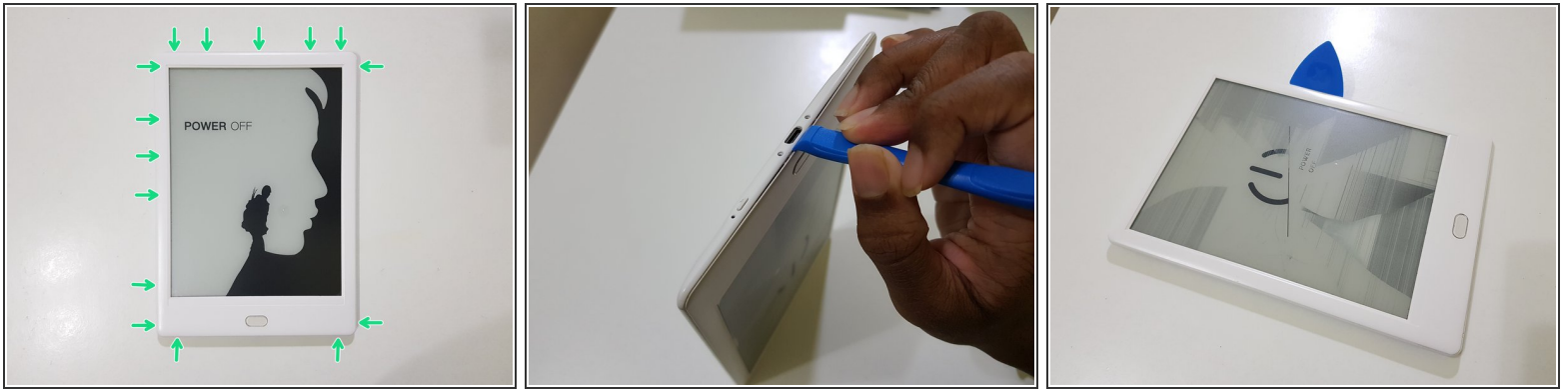
- Power off the tablet by holding down the power button (on the bottom) and tapping "Power off" on screen, then wait 10-15 seconds for the underlying Android system to shut down.

Step 2 — Rear Cover



- Unscrew the two Torx T2 screws surrounding the USB port.
- **Image needed: showing just the bottom in order to highlight screws in blue**

Step 3



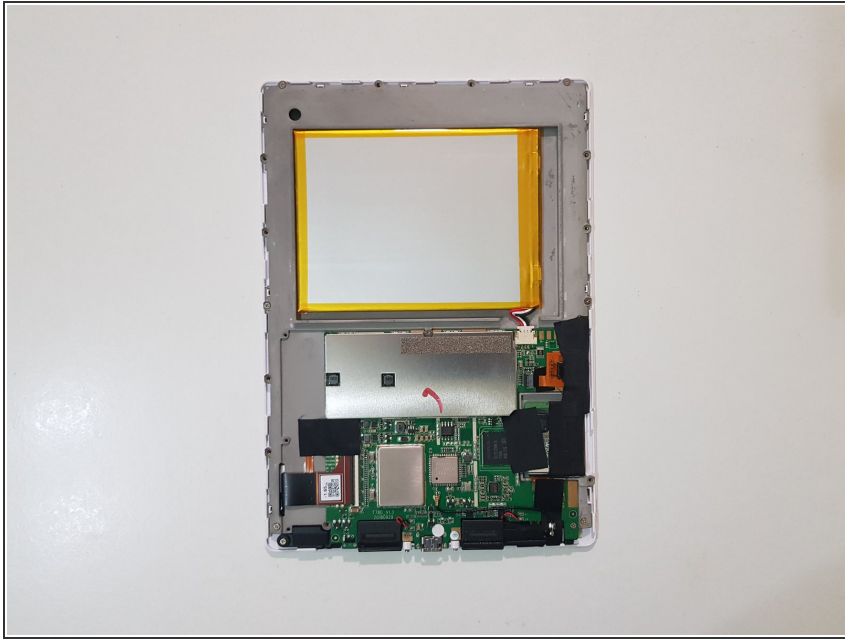
- Use the opening tool to pry at the lip in between the bezel and rear cover,
- then slide in your opening pick with the flat end,
- and slide it around to undo these clips.

Step 4



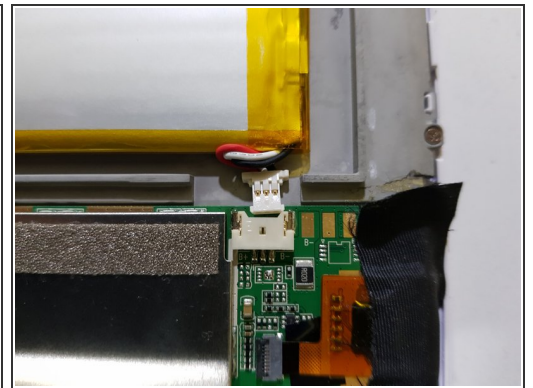
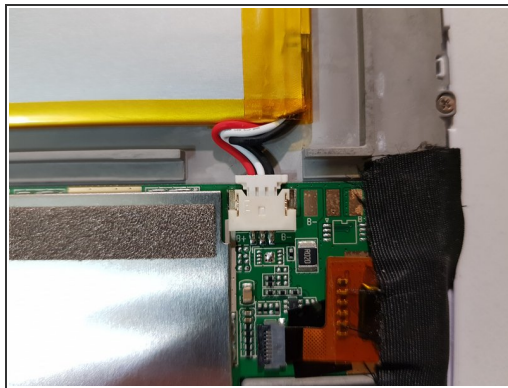
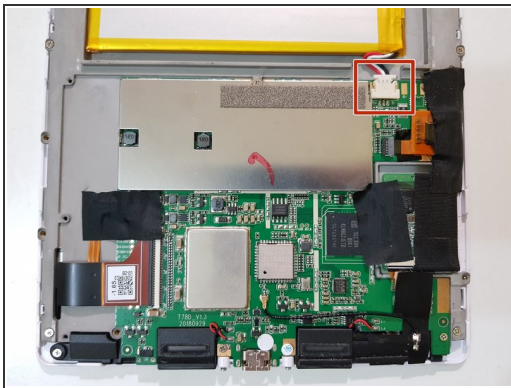
- (Note to self: Try opening the side using opening tools)
 - After releasing the clips, lift the front bezel out.
- The extension piece for the power button can fall out. Don't lose this!

Step 5



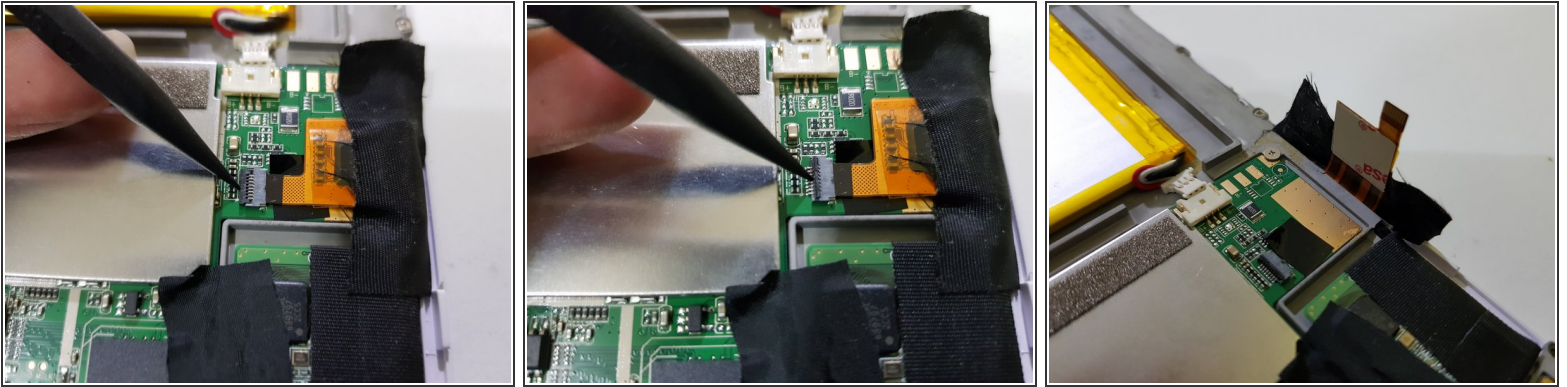
- The rear cover has been removed.

Step 6 — Mainboard



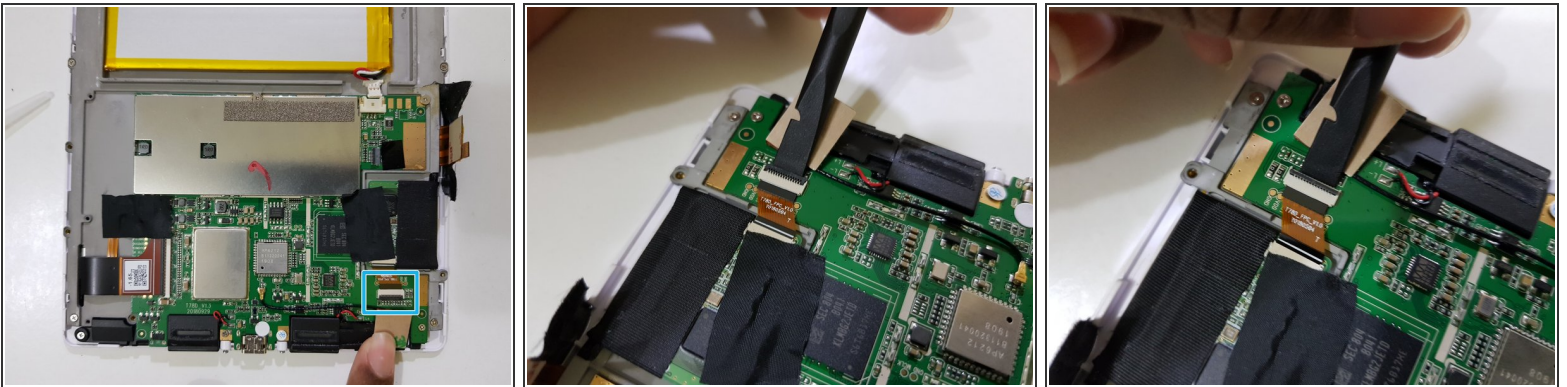
- Disconnect the battery.
- ⓘ Due to the placement of the battery, the connector may not come out all the way.

Step 7



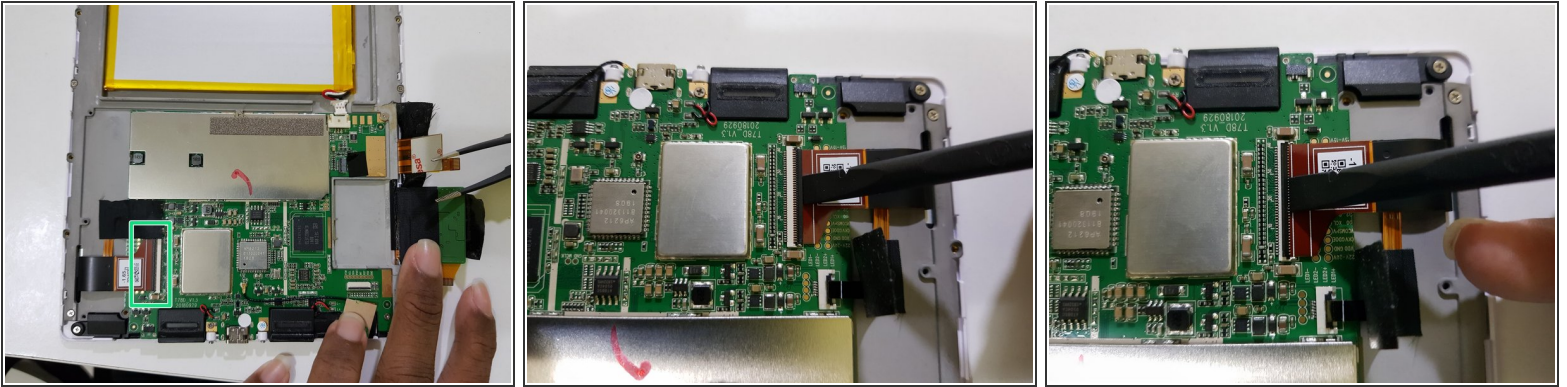
- Using the pointed end of a spudger, disconnect the touch panel.

Step 8



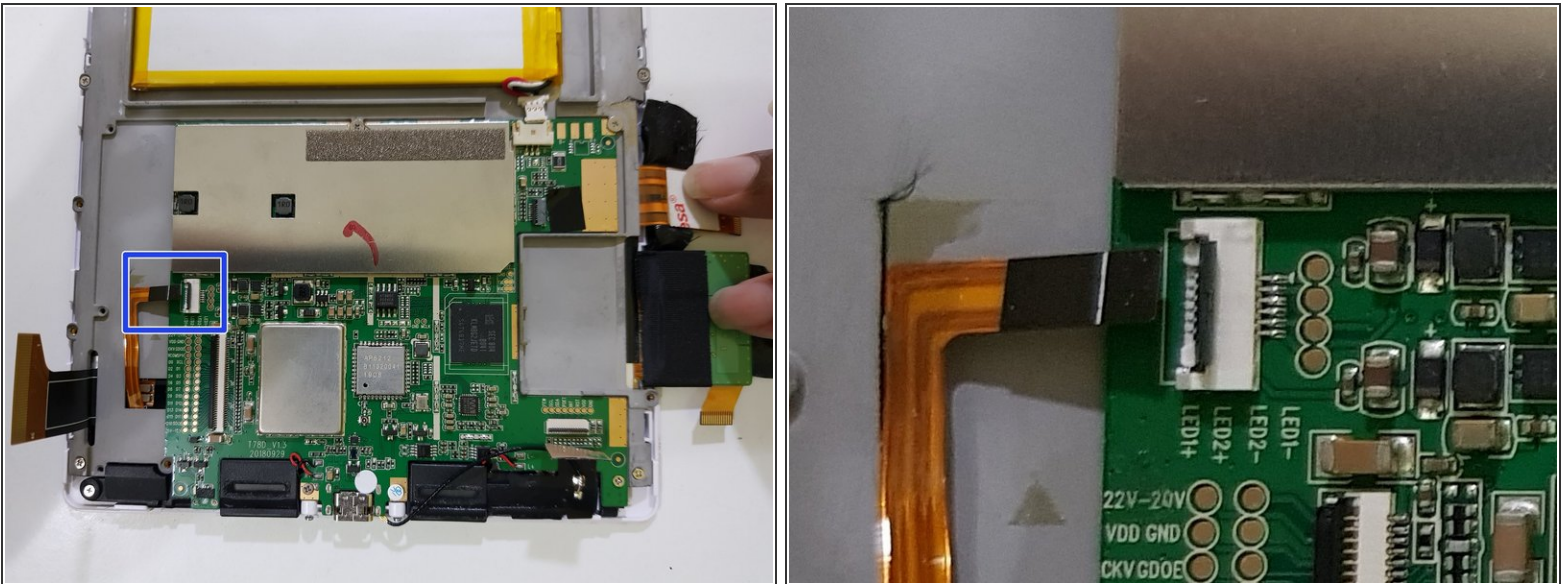
- Disconnect the pen input controller.

Step 9



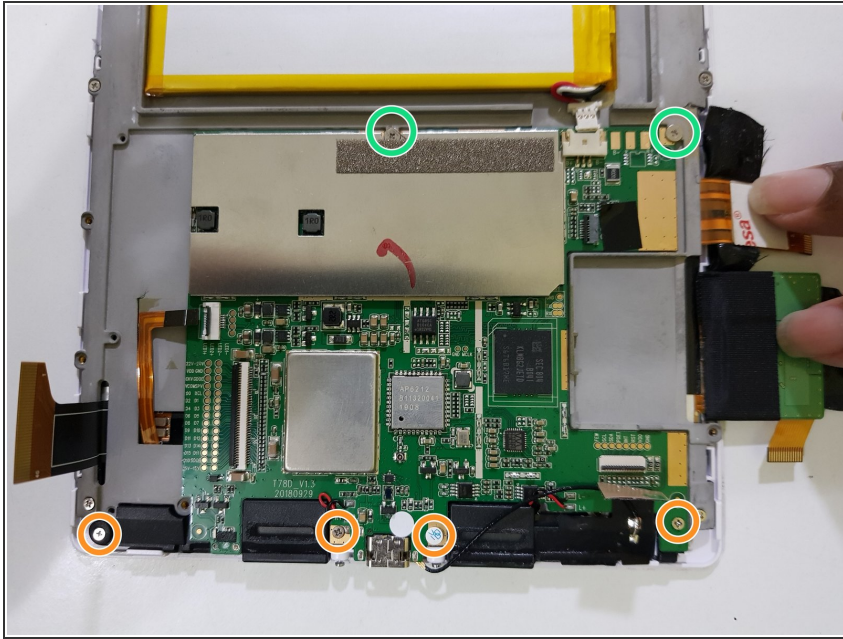
- Lift up part of the tape covering the frontlight connector.
- Using the flat end of your spudger, disconnect the display.

Step 10



- Peel the tape the rest of the way
- Using the pointed end of your spudger, disconnect the frontlight.

Step 11



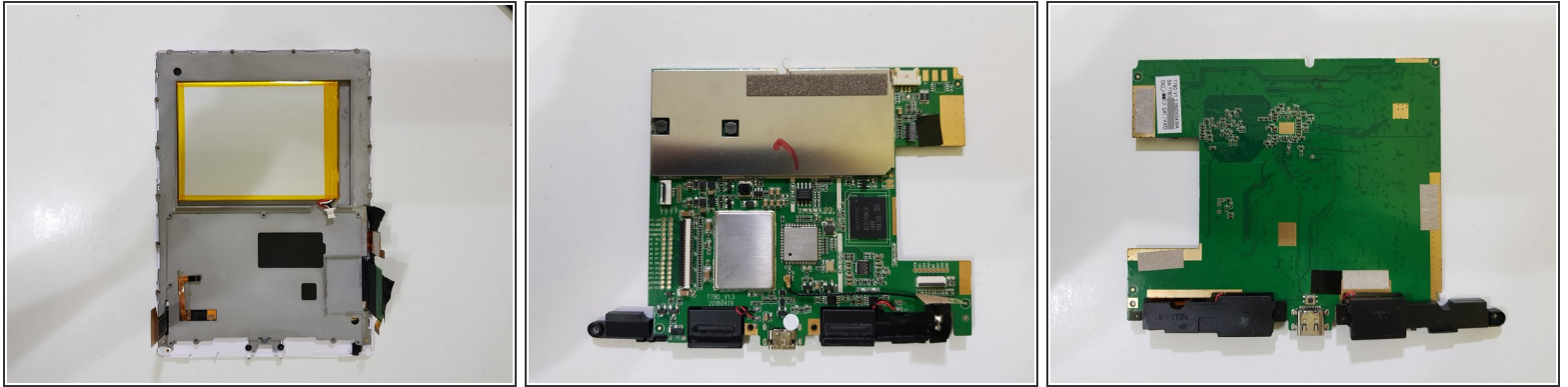
- Remove these screws using your J00 screwdriver (or a PH00 screwdriver if you don't have one).
- Remove these screws using your PH00 screwdriver.
- ⓘ One of these screws has a tamper detection sticker pasted over the screw head.
 - You should be able to poke the screwdriver through it.

Step 12



- Lift the mainboard out from the top,
- ★ The speaker connections are only held in with solder, and may break if you're not careful.

Step 13



- The mainboard has been removed.

To reassemble your device, follow these instructions in reverse order.