



BlackBerry 7280 Back Case Replacement

This guide will allow a user to replace the back case of the BlackBerry 7280 if it is cracked or damaged.

Written By: Sarah Waddill



INTRODUCTION

The outer shell of the BlackBerry 7280 has two main parts, the back case and the front case. The back case is the first part that has to be removed, and allows access to more internal parts of the device.



TOOLS:

- [iFixit Opening Tools](#) (1)
 - [T6 Torx Screwdriver](#) (1)
-

Step 1 — Battery



- With your thumb press down on the locking- button on the back of the BlackBerry 7280.
- Slide the battery cover off the device.

Step 2



- Remove the lithium-ion battery from the back of the device using your index finger.

Step 3 — SIM Card



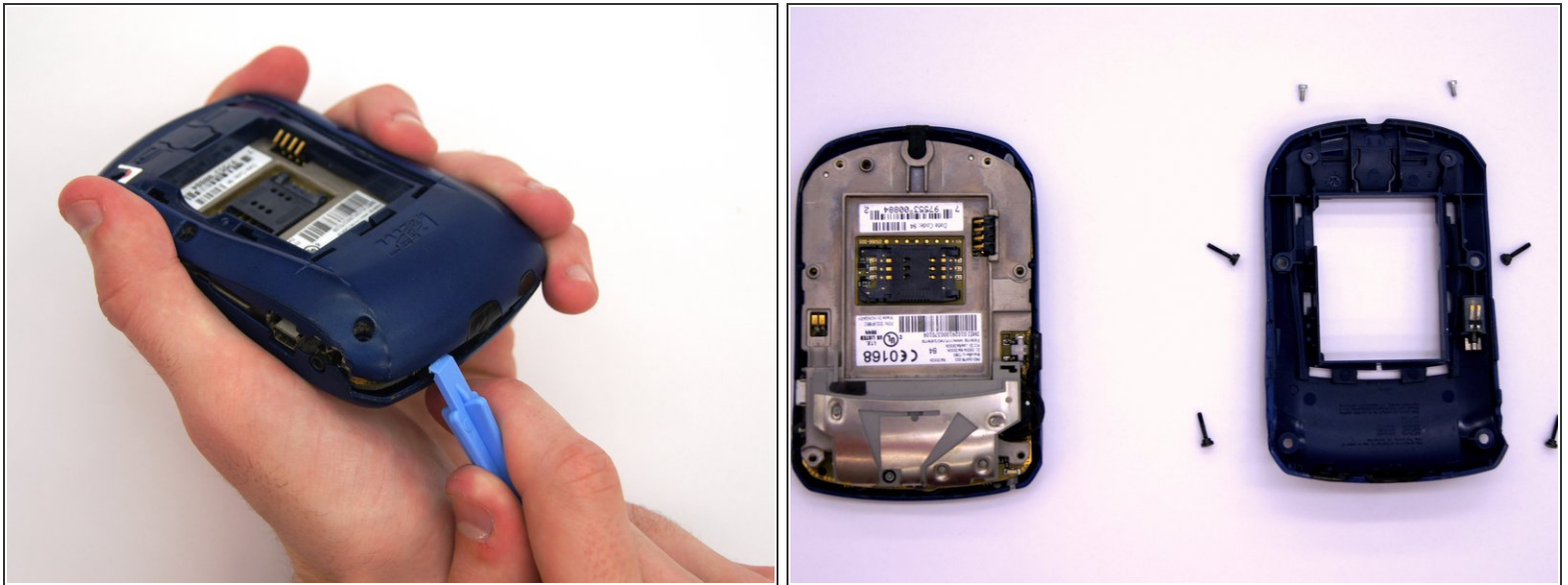
- Hold the device with both hands.
- Lift the SIM card holder using your thumb and index finger.
- Remove the SIM card from the device.

Step 4 — Back Case



- Using a Torx T6 screwdriver, remove all six 1/8 inch screws (marked in red) from the back case. Set screws aside.
- ⓘ The SIM card has been removed here to prevent damage to the card. This is recommended, but not not required.

Step 5



- Use the plastic opening tool to pry the back case away from the front case.

To reassemble your device, follow these instructions in reverse order.