



# Likebook Muses Rear Cover Replacement

Replace the rear cover on your Likebook Muses. This guide does NOT cover replacing the aluminium panel separately.

Written By: Kevin Bhasi



## INTRODUCTION

Replace the rear cover on your Likebook Muses (Boyue T78D).

This guide does **not** cover replacing the aluminium panel separately.

*Flagged as “In Progress” as the image in step 3 needs to be replaced with one depicting an intact display.*



### TOOLS:

- [T2 Torx Screwdriver](#) (1)
  - [iFixit Opening Tool](#) (1)
  - [iFixit Opening Picks \(Set of 6\)](#) (1)
-

## Step 1 — Power off



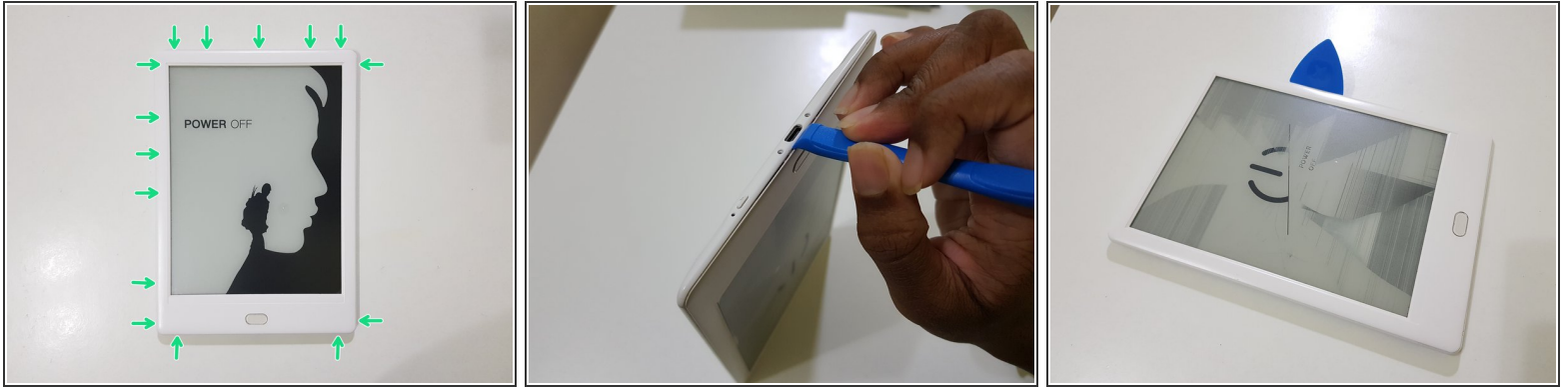
- Power off the tablet by holding down the power button (on the bottom) and tapping "Power off" on screen, then wait 10-15 seconds for the underlying Android system to shut down.

## Step 2 — Rear Cover



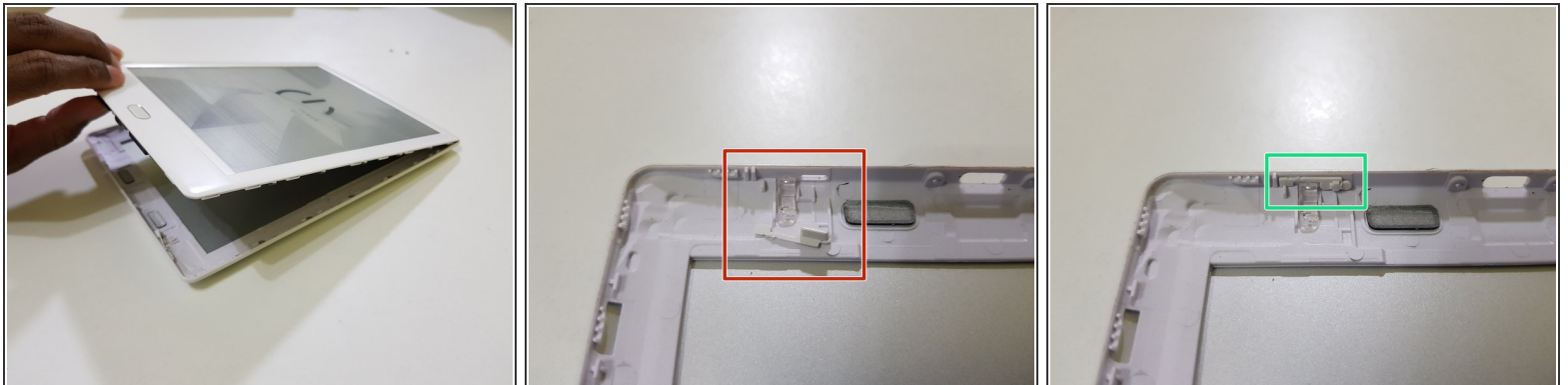
- Unscrew the two Torx T2 screws surrounding the USB port.
- **Image needed: showing just the bottom in order to highlight screws in blue**

## Step 3



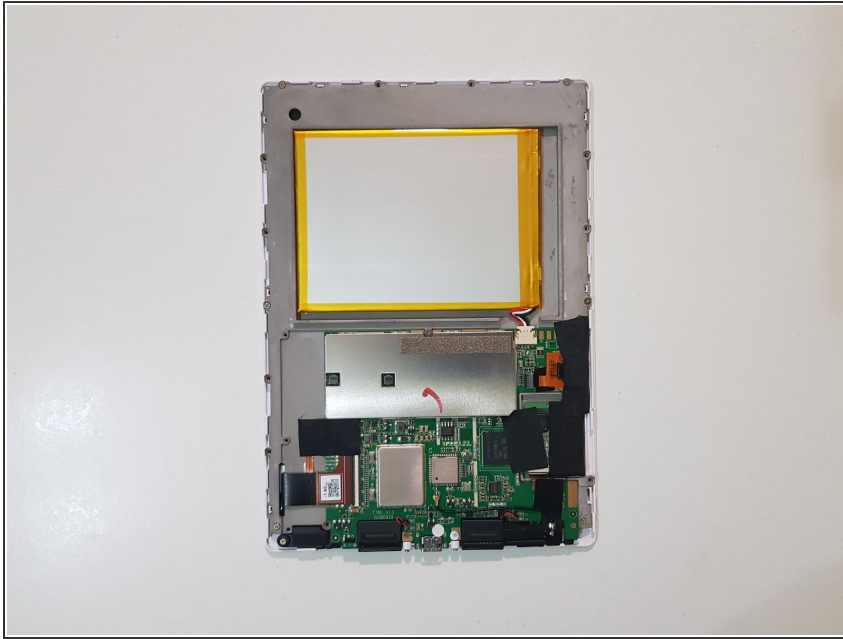
- Use the opening tool to pry at the lip in between the bezel and rear cover,
- then slide in your opening pick with the flat end,
- and slide it around to undo these clips.

## Step 4



- (Note to self: Try opening the side using opening tools)
  - After releasing the clips, lift the front bezel out.
- ☑ The extension piece for the power button can fall out. Don't lose this!

## Step 5



- The rear cover has been removed.

To reassemble your device, follow these instructions in reverse order.