



How to read data off a Solnist Levellogger

Instructions for downloading data off a Solnist Levellogger pressure transducer. We use these pressure transducers to measure water level over several months

Written By: Jacquelyn

The screenshot shows the 'Levellogger' tab of the 'Datalogger Settings' software. The interface has a top navigation bar with tabs: 'Datalogger Settings', 'Data Control', 'Real Time View', 'Data Wizard', 'Conductivity Cal', and 'Levellogger'. Below the navigation bar, there are icons for file operations (copy, paste, delete) and a 'Com Port' dropdown menu. The main area is divided into several sections: 'Datalogger Information' with fields for Status, Start Time, and Stop Time; 'Datalogger Time' with a 'Synchronize' button and 'Computer Time: 7/3/2020 4:25:50 PM'; 'Datalogger Memory' with 'Used Memory' and 'Free Memory' fields; 'Datalogger Sampling Mode' with a question mark icon; and 'Datalogger Memory Mode' with radio buttons for 'Slate' and 'Continuous'. At the bottom, there is a 'Start/Stop Datalogger' button. On the left side, there are input fields for 'Serial Number:', 'Instrument Type:', 'Firmware Version:', 'Location:', and 'Project ID:'. A battery level indicator is also present.

INTRODUCTION

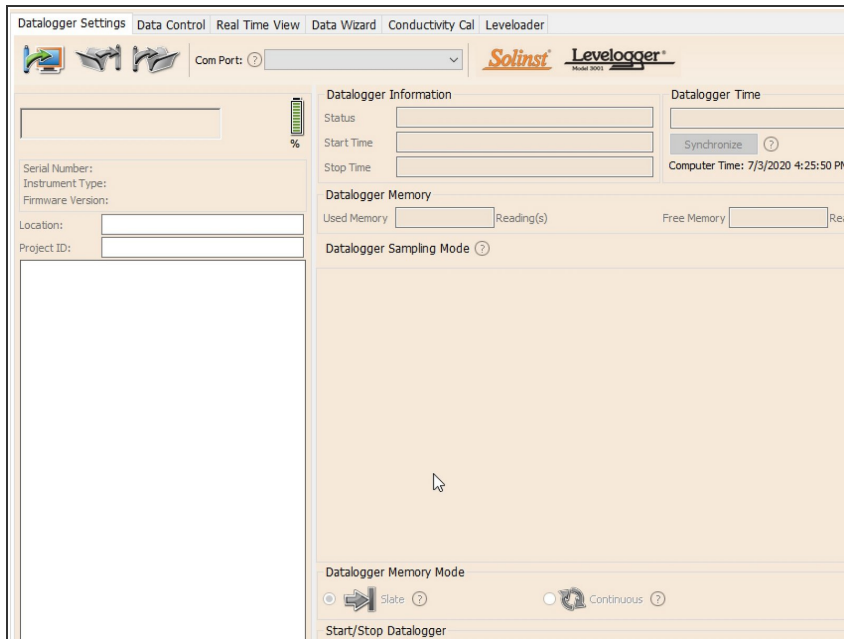
This guide is for pulling data off a Solnist Levellogger that has been deployed in the field.



PARTS:

- [Solnist Levellogger Model 3001](#) (1)
 - [Direct Read Optical Cable](#) (1)
 - [Computer with Windows OS](#) (1)
-

Step 1 — Download the latest version of the Solinst Levellogger Software



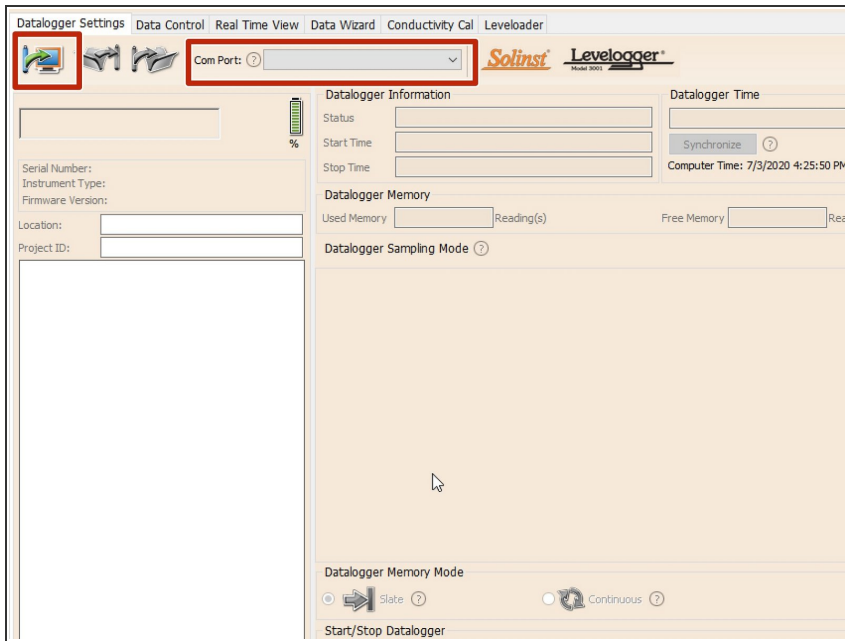
- <https://www.solinst.com/downloads/>
- Only compatible with Windows, you may need to install new drivers for the USB connection

Step 2 — Unscrew levellogger cap and connect to direct read optical cable



- Under the cap there are three holes- two of those holes are for optical communication, one hole is for the pin on the optical reader. Connect the reader so that the metal pin fits in the correct hole and you can tightly screw the logger to the reader.

Step 3 — Connect your device to the software and download data



- The boxed red fields are the only ones you should need to fill in.