



# Zune Flash 2nd Generation Center Frame Replacement

How to remove the center frame from the Zune...

Written By: killdashnine



---

# INTRODUCTION

How to remove the center frame from the Zune Flash 2nd Generation.



## TOOLS:

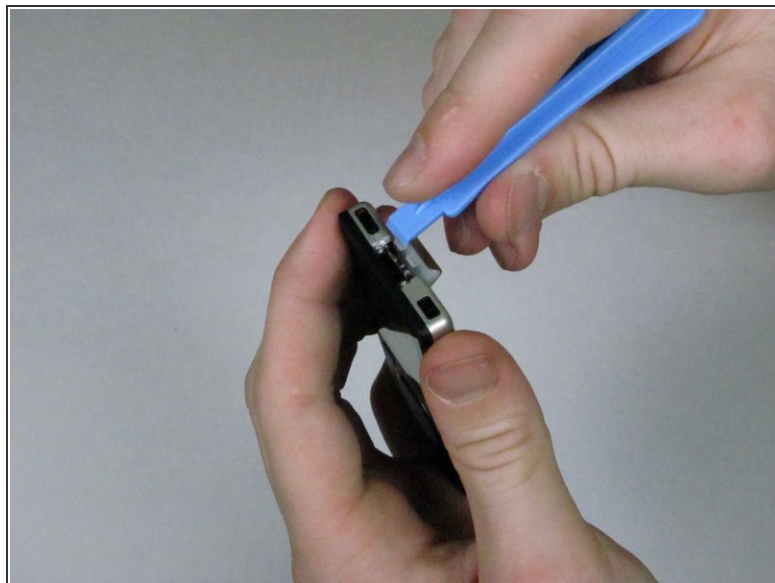
- [iFixit Opening Tool](#) (1)
  - [Metal Spudger](#) (1)
  - [Tri-point Y1 Screwdriver](#) (1)
-

## Step 1 — Back Cover



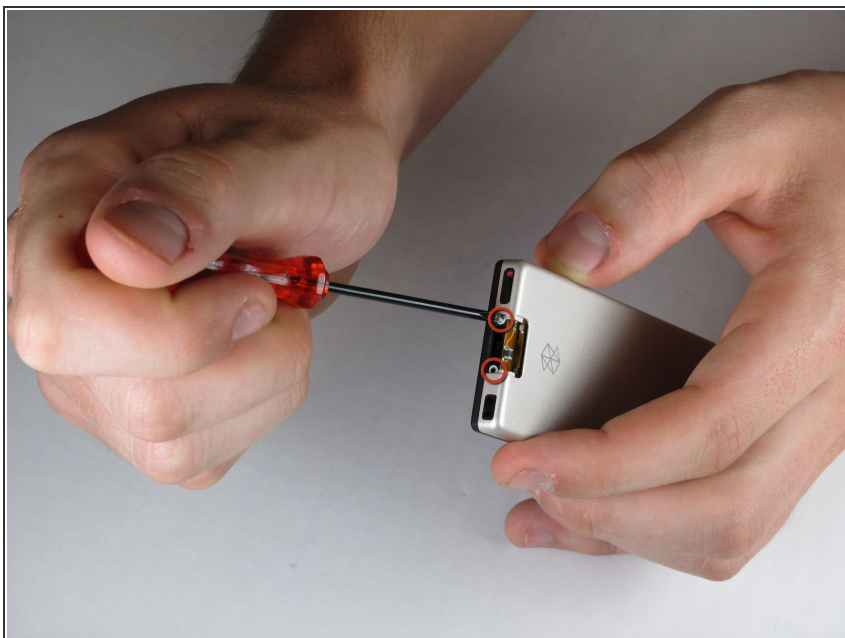
- Prior to disassembly, verify the hold switch is engaged to ensure the device will not turn on during the procedure.
  - If the device turns on while it is being disassembled it could cause irreversible damage to the device.
- i PICS MAKE NO SENSE.**

## Step 2



- Remove the top metal clip by inserting a Zune opening tool in between the faceplate and back cover and pulling gently back as shown in the images.
- You should hear a 'click' as the clip detaches from the device.

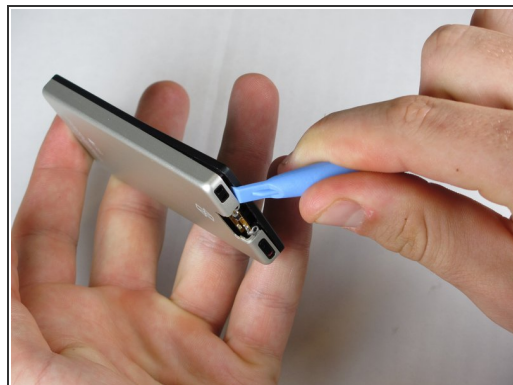
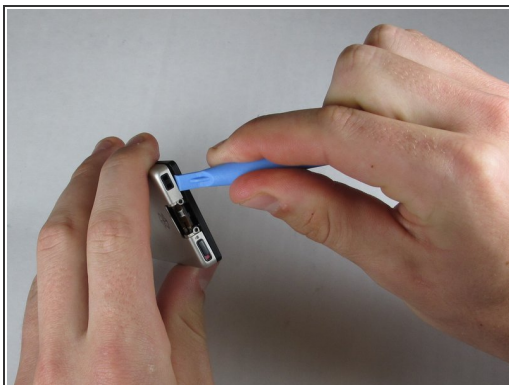
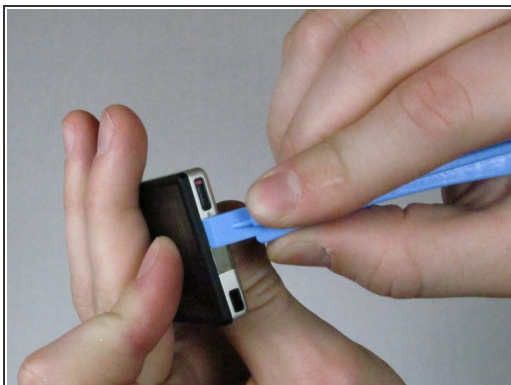
## Step 3



- Remove the two screws shown using a Y00 Tri-Wing screwdriver.



## Step 4



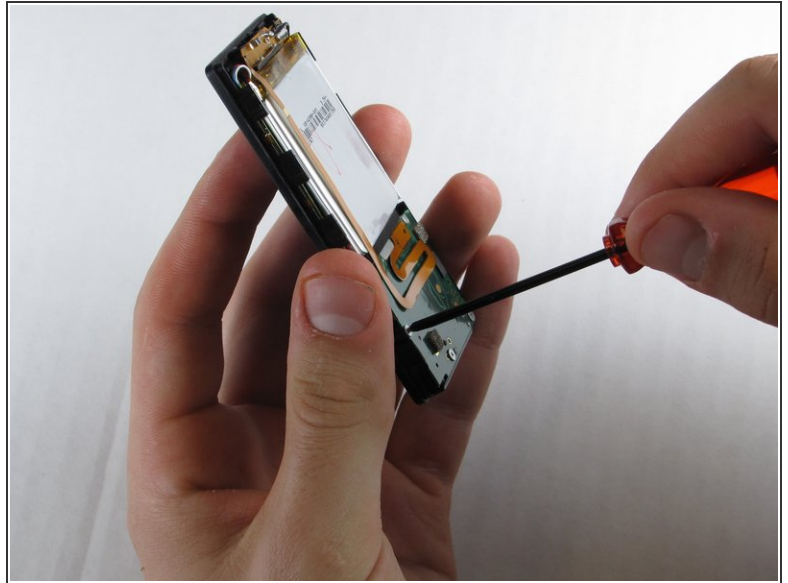
- Insert the Zune opening tool between the faceplate and the back cover, starting from the top and slowly work your way around the device.

## Step 5



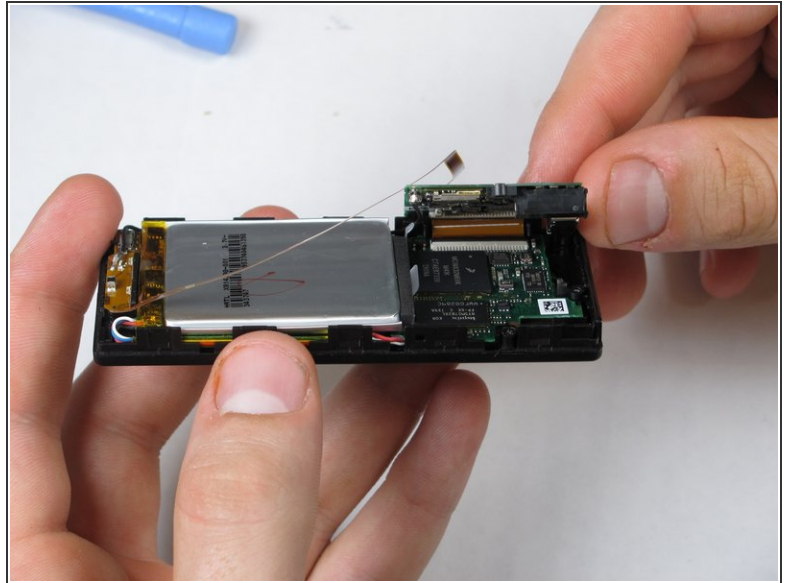
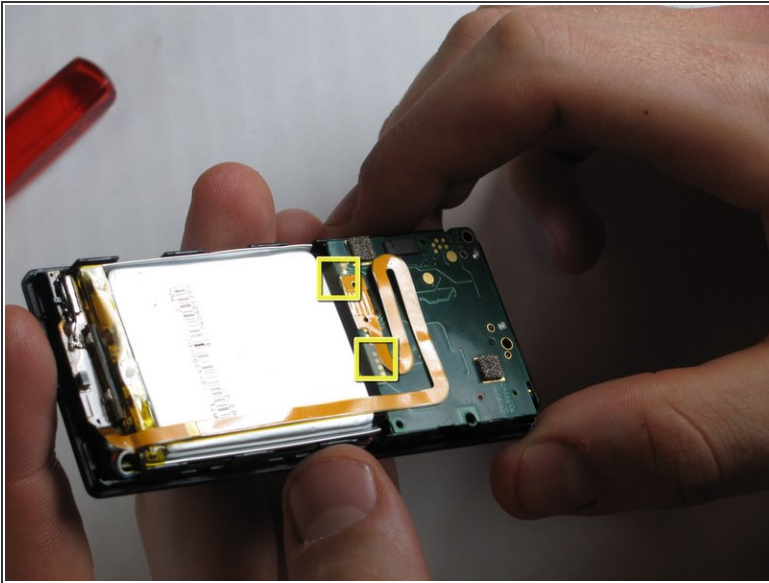
- Work your way around the Zune until the back cover comes free. Remove the back plate and set it aside.

## Step 6 — Face Plate



- Remove the three screws (5.5mm by 3mm) from the backside of the Zune using a Y00 Tri-Wing screwdriver.
- Be sure to put this set of screws aside since they are a different size than any other screws in the device.

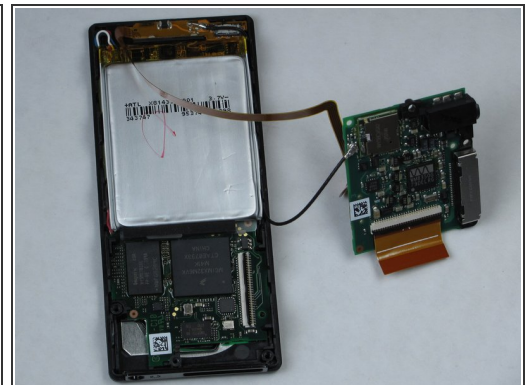
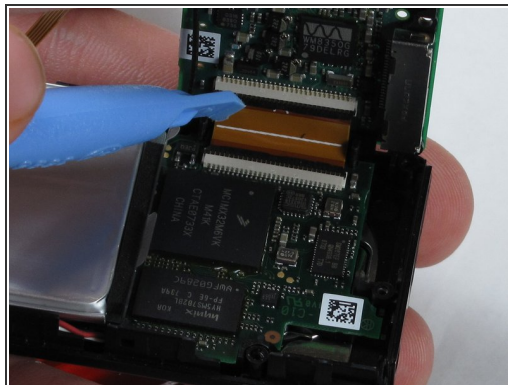
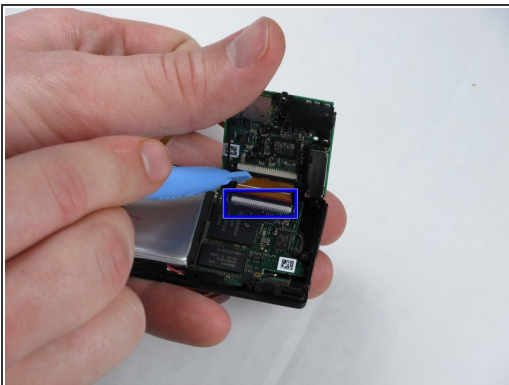
## Step 7



- Use your finger or a Zune opening tool to pry back the two clear flaps.
- Next lift the communications board that was being held down by the clear flaps.

⚠ Be careful not to accidentally detach the slim ribbon that connects between the communications board and the device.

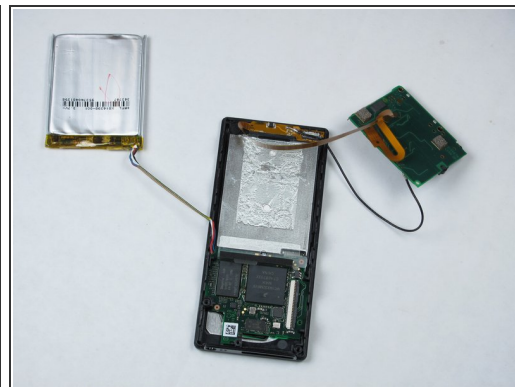
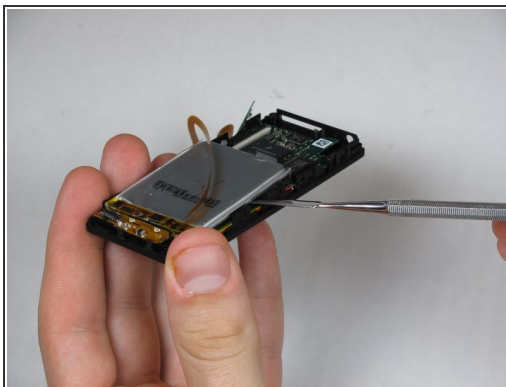
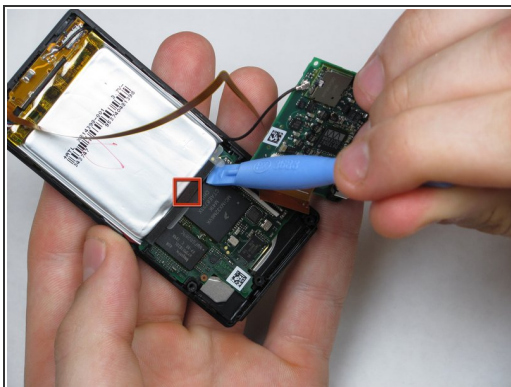
## Step 8



- Disconnect the ribbon with the plastic opening tool by flipping up the black plastic flap where the ribbon connects to the memory board.
- Carefully pull the ribbon out of the memory board, ensuring that the black plastic flap is up before removal to avoid the ripping the ribbon.

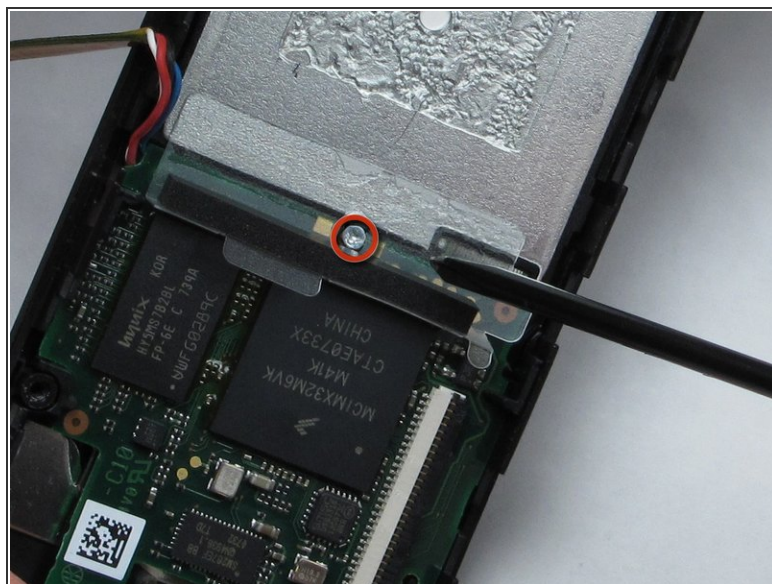
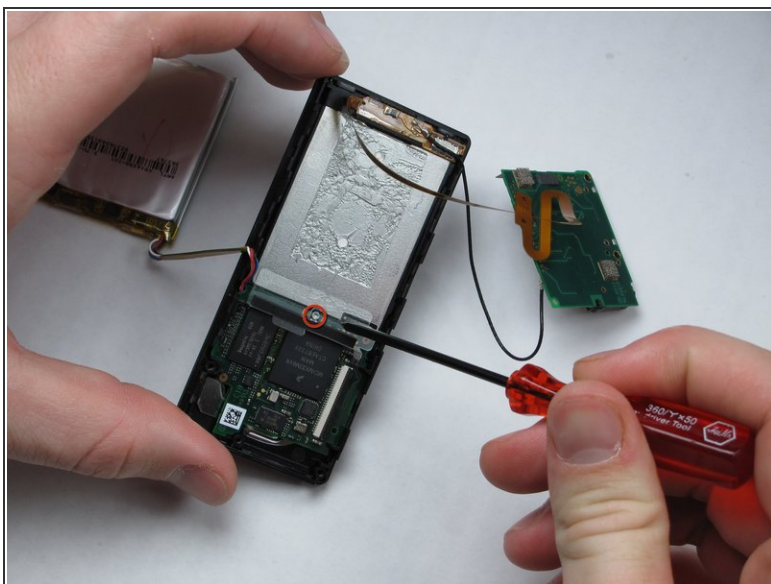


## Step 9



- Remove the battery by prying the battery off from the bottom with a Zune opening tool.
- ⓘ There is an adhesive between the battery and the device, therefore use a metal spudger to finish detaching the battery.
- ⚠ Be sure not to puncture the battery in any way when using the metal spudger.

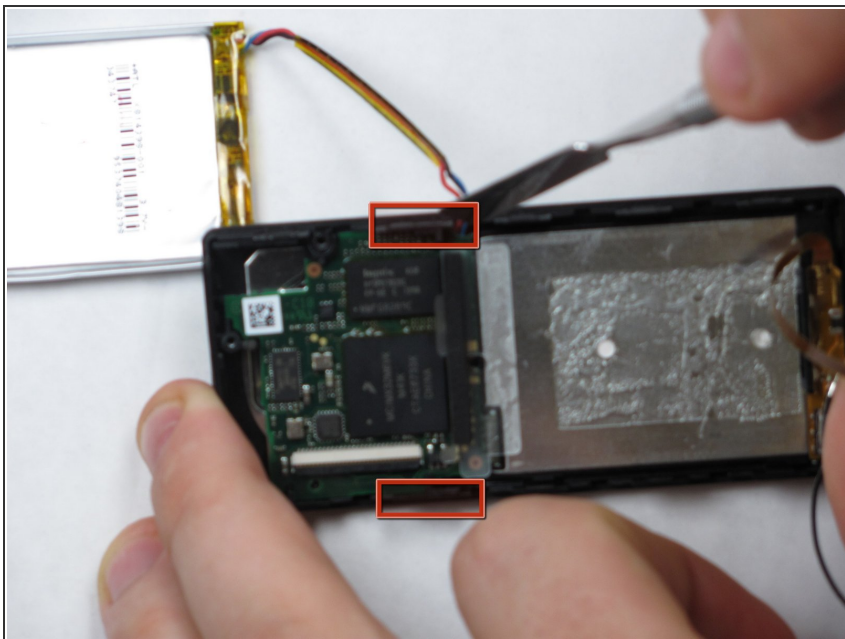
## Step 10



- Remove the single screw under the battery using a small Tri-Wing screwdriver.

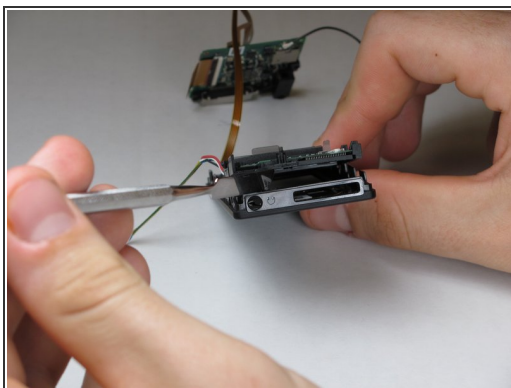


## Step 11



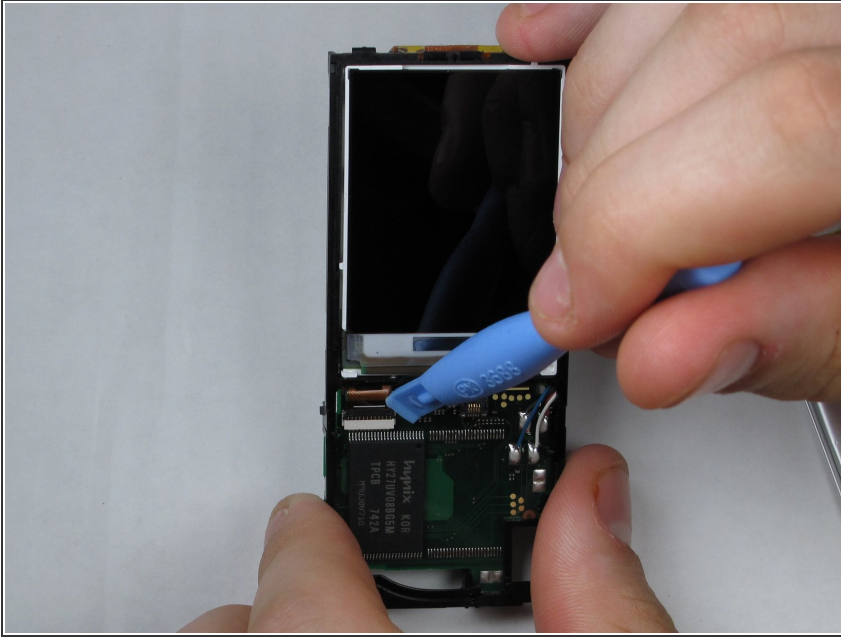
- Disconnect the faceplate from the device by depressing the two tabs located near the middle of each of the sides using a metal spudger.
- This will disconnect the last circuit board in the device from the center frame.

## Step 12



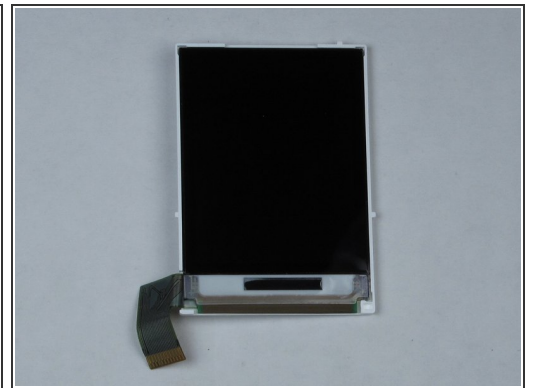
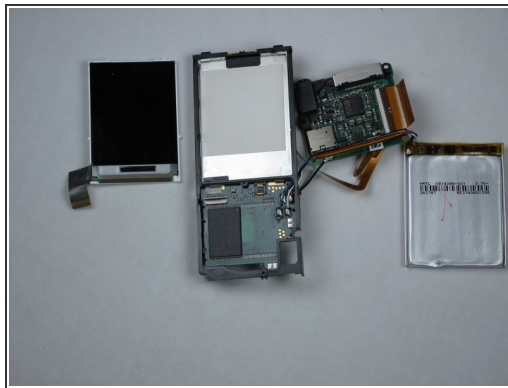
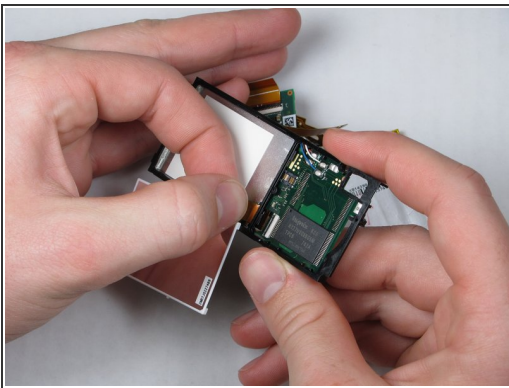
- Remove the faceplate by using a metal spudger to separate it from the remaining components.

## Step 13 — LCD Display



- Release the LCD connector ribbon by flipping up the black switch. This will disconnect the LCD from the device.
- At this point the LCD screen should be easily separable from the device.

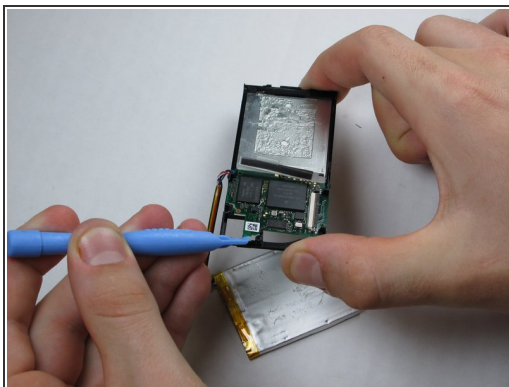
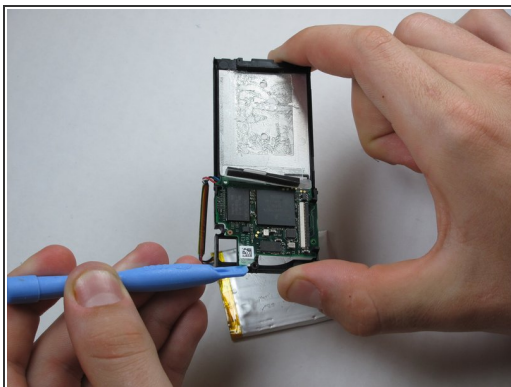
## Step 14



**⚠ The LCD ribbon is adhered to the memory board with a strip of glue.**

- It's safest to flip the display over before removing the ribbon, as shown in the first image.
- To avoid damage, remove the LCD by pulling slowly and carefully on the ribbon, directly away from the memory board.

## Step 15 — Center Frame



- Pry up the memory board from center piece with a Zune opening tool and gently pull it off.

To reassemble your device, follow these instructions in reverse order.