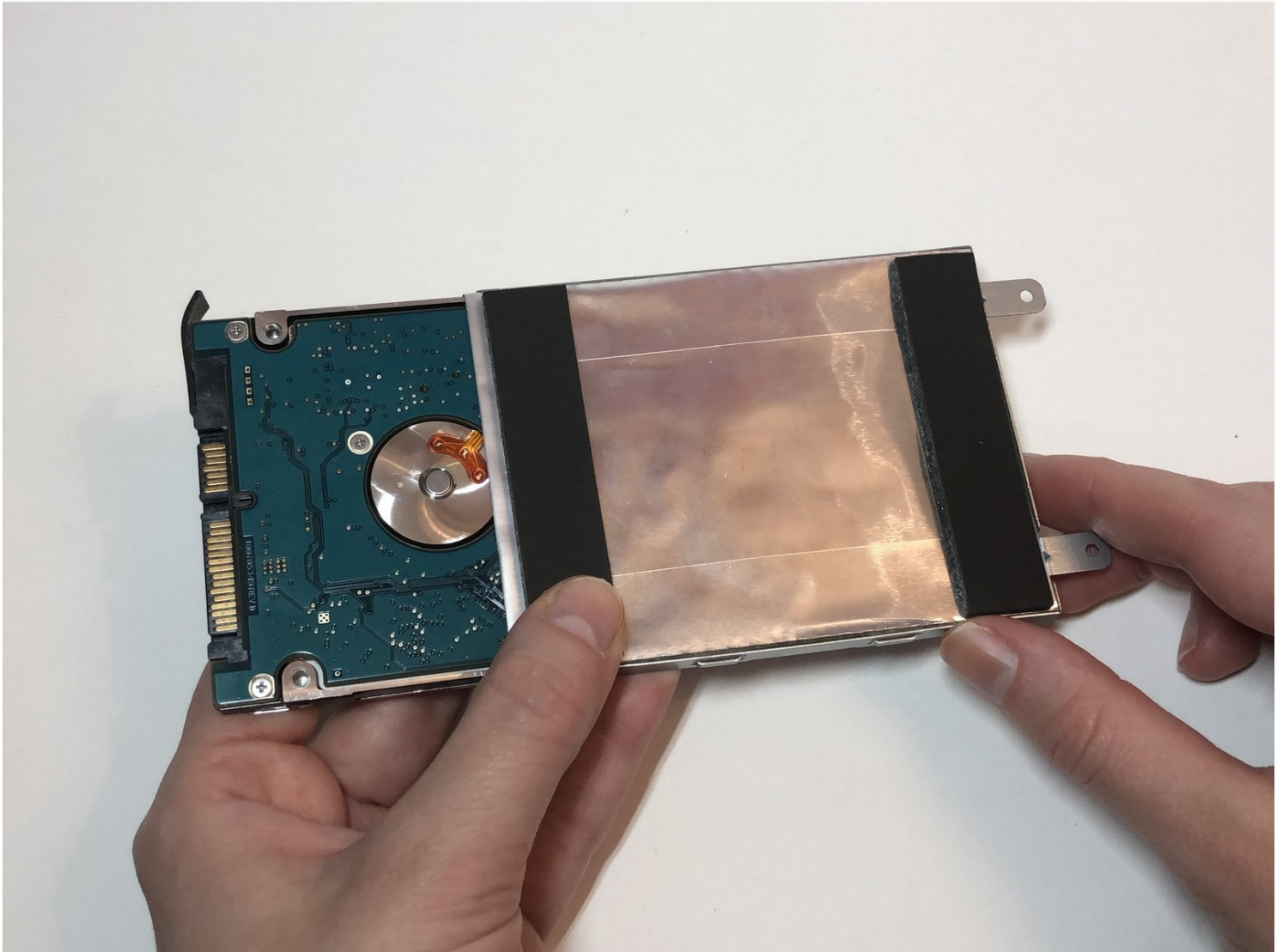




Lenovo Flex 2-14 Hard Drive Replacement

Use this guide to replace a full or faulty hard...

Written By: Eva Beilin



INTRODUCTION

Use this guide to replace a full or faulty hard drive in your Lenovo Flex 2-14 laptop.

If your Lenovo Flex 2-14 laptop (model 20404) has slowed down and is constantly freezing, you may need to replace the hard drive, especially if you have already tried other methods to fix these issues.

The hard drive stores and retrieves data in your computer. Make sure you back up your hard drive before replacing it in order to not lose any data. You may also want to upgrade your hard drive if you are running low on storage, as that can cause your laptop to slow down.

Before beginning, make sure to power off your laptop completely and disconnect from any external power source.

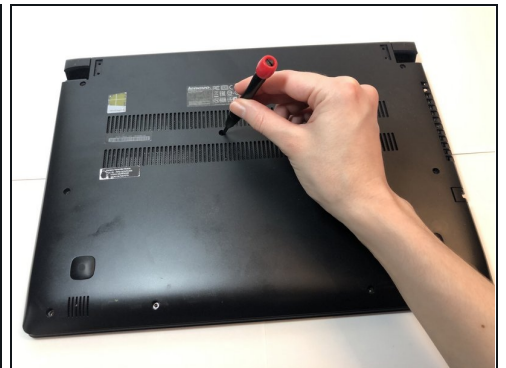
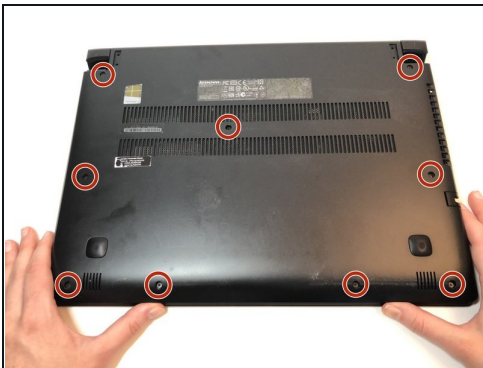
TOOLS:

Phillips #0 Screwdriver (1)
Spudger (1)

PARTS:

250 GB SSD (1)
500 GB SSD (1)
1 TB SSD (1)
2 TB SSD (1)

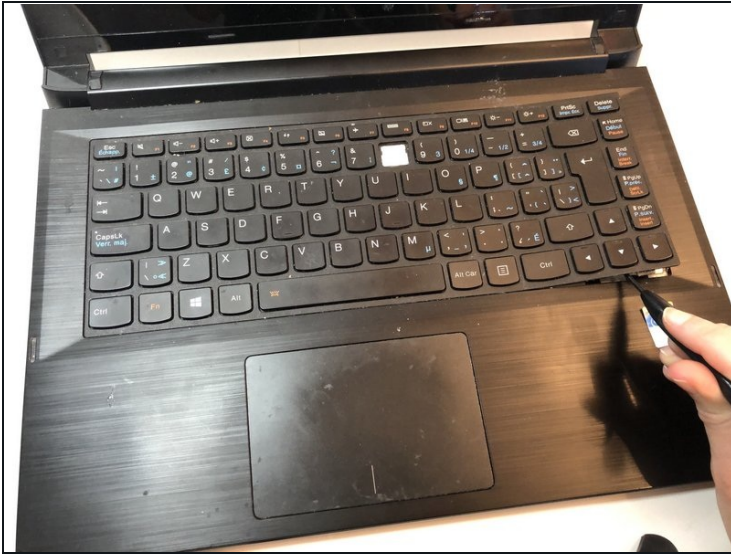
Step 1 — Hard Drive



 Make sure your laptop is off before you begin.

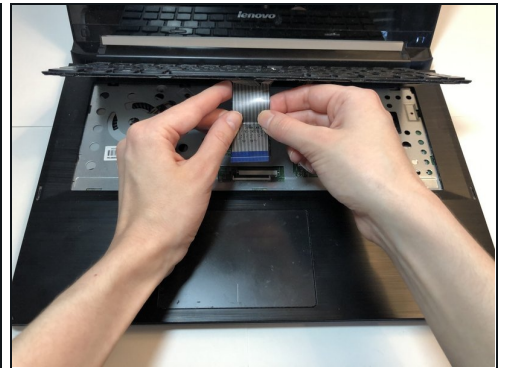
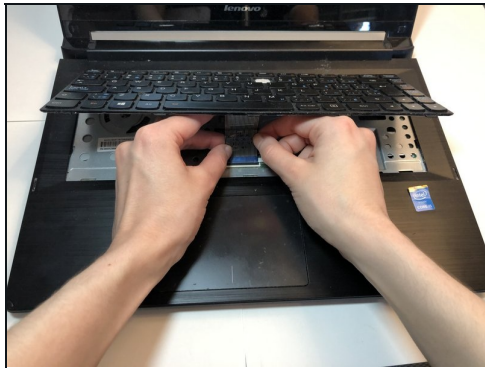
- Flip the laptop over so the bottom is facing upwards.
- Remove all nine 6mm Phillips #0 screws located along the edges and in the centre of the back panel.

Step 2



- Using a prying tool, carefully lift up the keyboard.

Step 3



- Take out the keyboard by disconnecting the cable.

Step 4



- Remove all four 3.5 mm Phillips screws underneath the keyboard.

Step 5



- Separate the top and bottom panels of the laptop using a prying tool.
- Slide the prying tool along the edges of the laptop until the bottom panel is completely separated.
- Remove the back cover of the laptop once you have finished prying it open.

Step 6



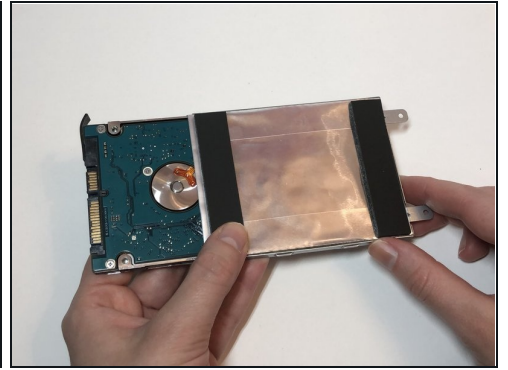
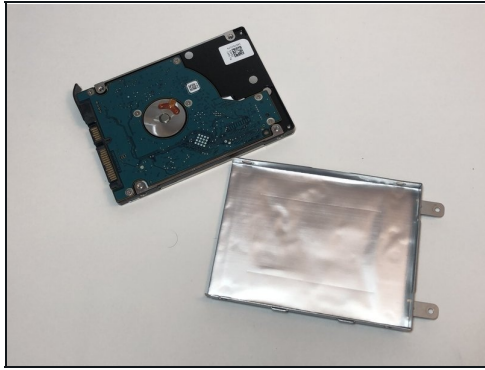
- Remove the two 4 mm Phillips screws holding the hard drive adapter in place.

Step 7



- Take out the adapter containing the hard drive from the laptop.
- Remove all four 4mm Phillips screws from the adapter.

Step 8



- Remove the hard drive from the adapter.
- Insert the new hard drive into the adapter.

Step 9



- Put all four 4mm Phillips screws back into the adapter with the hard drive, in order to hold it in place.
 - Put the adapter back in and reassemble the laptop.
- ⓘ Before reassembling, make sure the hard drive is securely in the case.

To reassemble your device, follow these instructions in reverse order.