



How to Repair a Burnt Wire for a Light Globe

This guide will demonstrate how to repair a burnt wire of any kind. For this guide specifically, a burnt wire from a light globe will be repaired.

Written By: HarpreetGill



INTRODUCTION

Welcome to this guide! Here is some basic background information required to begin the fix:

Background experience:

While this guide may look intimidating, no background experience is required! All steps here are made to be novice-friendly.

Hazards:

If you are inexperienced with electricity, rubber/leather gloves are recommended as they act as insulators.

Why is this repair needed?:

This repair is needed as it can be a good skill to know for the future. This fix can apply to anything requiring a fix of a wire.

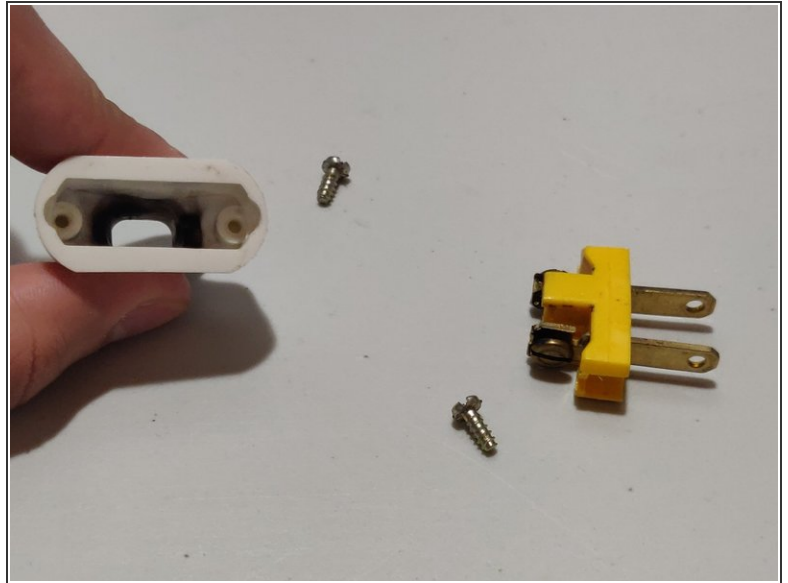
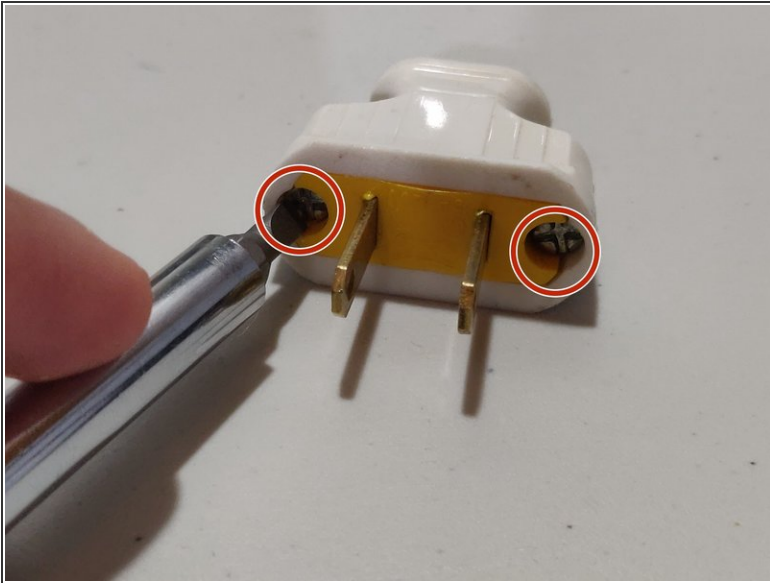
If all these requirements are met, you can begin the guide!



TOOLS:

- [Flathead Screwdriver](#) (1)
 - [Utility Scissors](#) (1)
 - [Leather Work Gloves](#) (1)
- (Optional)*
- [Flush Wire Cutters](#) (1)
 - [Wire Stripper](#) (1)
-

Step 1 — How to Repair a Burnt Wire for a Light Globe



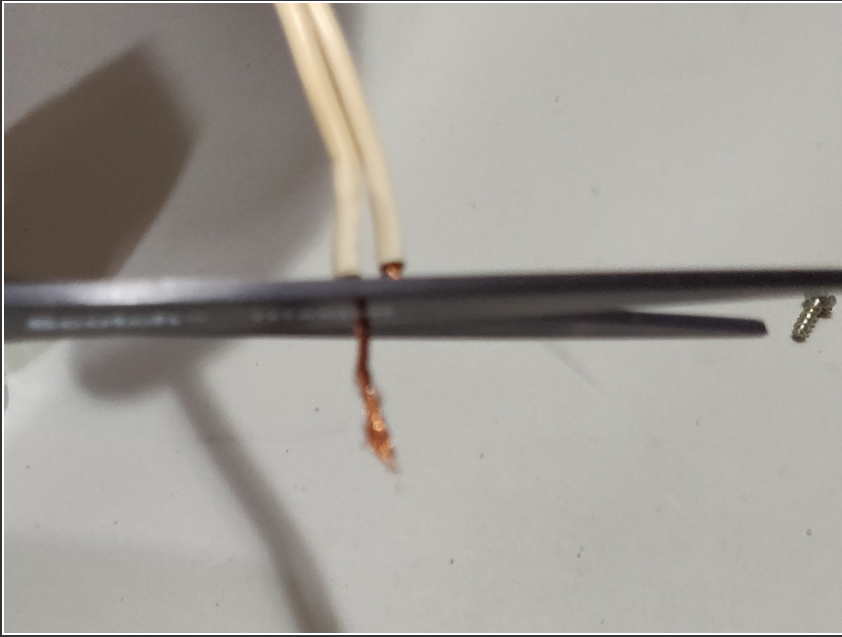
- Use a flathead screwdriver to remove the two 3 mm screws from the power adapter.

Step 2



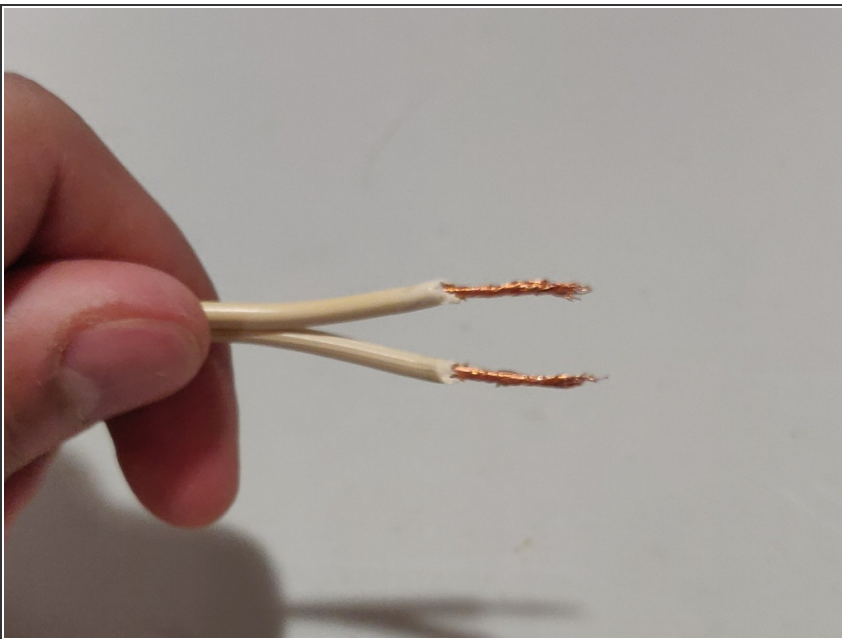
- If needed, clean the power adapter's shell as much as possible.

Step 3



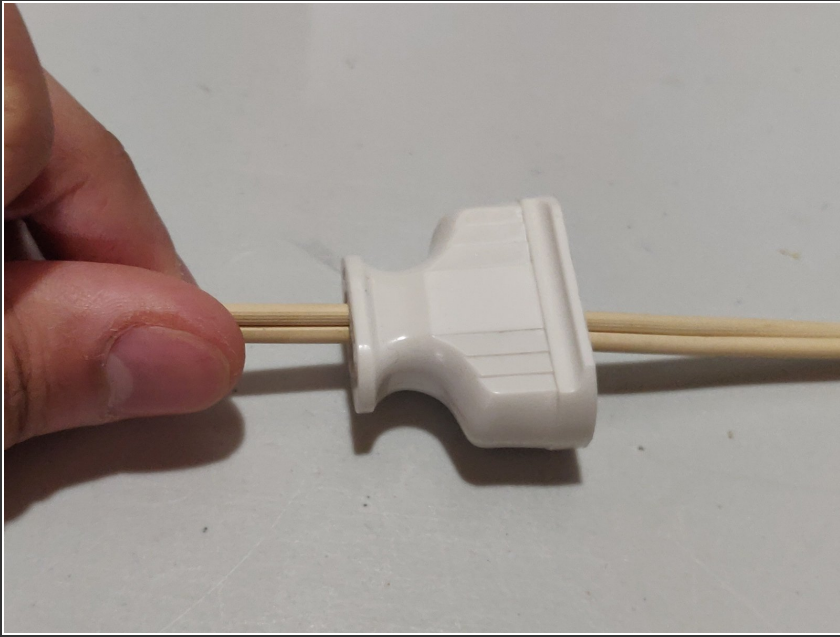
- Use wire cutters to cut the wires to equal lengths.

Step 4



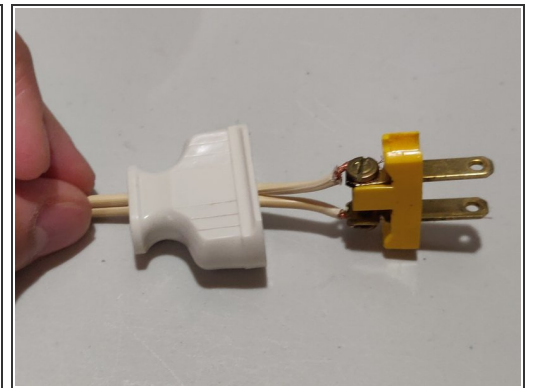
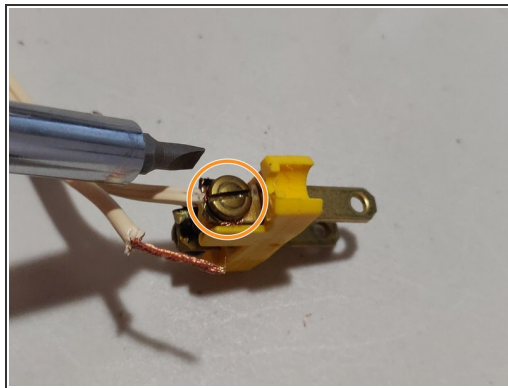
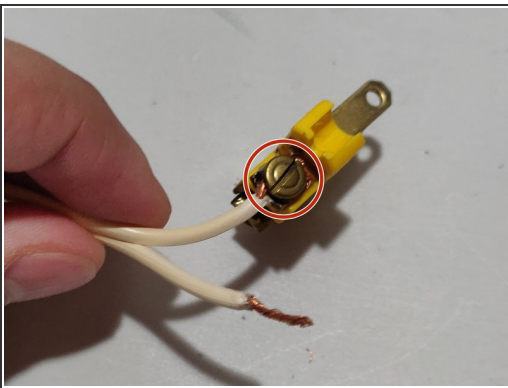
- Use wire strippers to carefully peel the wire cord to expose 2 cm of wire.

Step 5



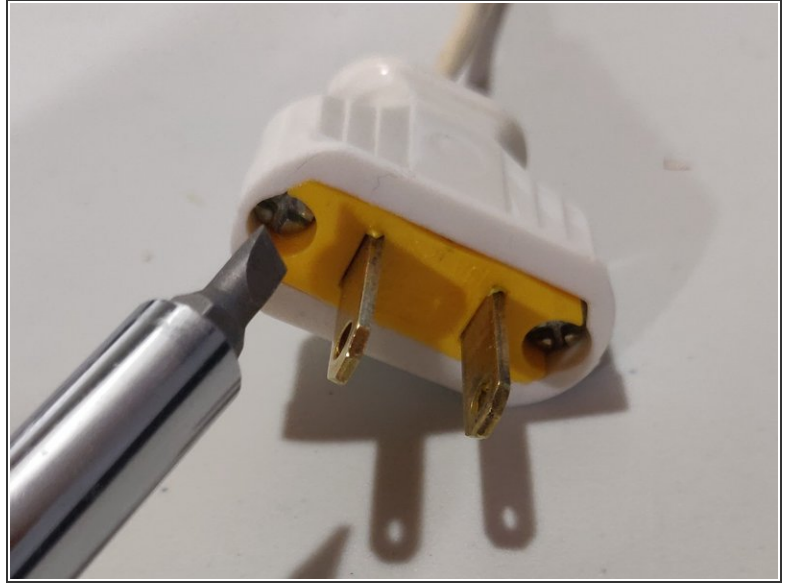
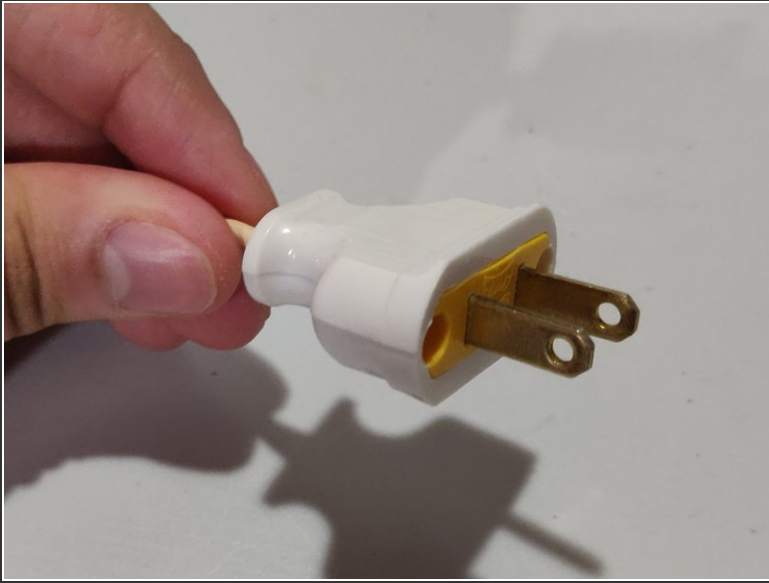
- Slide the shell back into the wire cord, past the exposed copper wires.

Step 6



- Grab the terminal of the power adapter and loosen the 3 mm screws of the terminal if needed.
- Wrap one exposed copper wire around one loosened 3 mm screw and tighten the screw immediately.
- Repeat the second bullet point for the second copper wire.

Step 7



- Push the shell back into the terminal so that the terminal is protected by the shell.
- Grab the 3 mm screws that were taken out in the first step and re-screw them into the shell.

Step 8



- Plug in the power adapter into a functioning power outlet.
- The light globe should now successfully turn on!

