



Samsung Galaxy Tab 4 7.0 Home Button Replacement

When the home button is over-pressed or the...

Written By: Bhavesh Joshi



INTRODUCTION

When the home button is over-pressed or the connecting chip of home button stopped working then for effective functionality of your tablet, you need to replace your home button.

Follow these easy step by step procedure to replace your home button of *Samsung Galaxy tab 4 7.0 (model 231)* android tablet.

Before beginning, make sure to power off your tablet completely and disconnect from any external power source.

TOOLS:

[Spudger](#) (1)

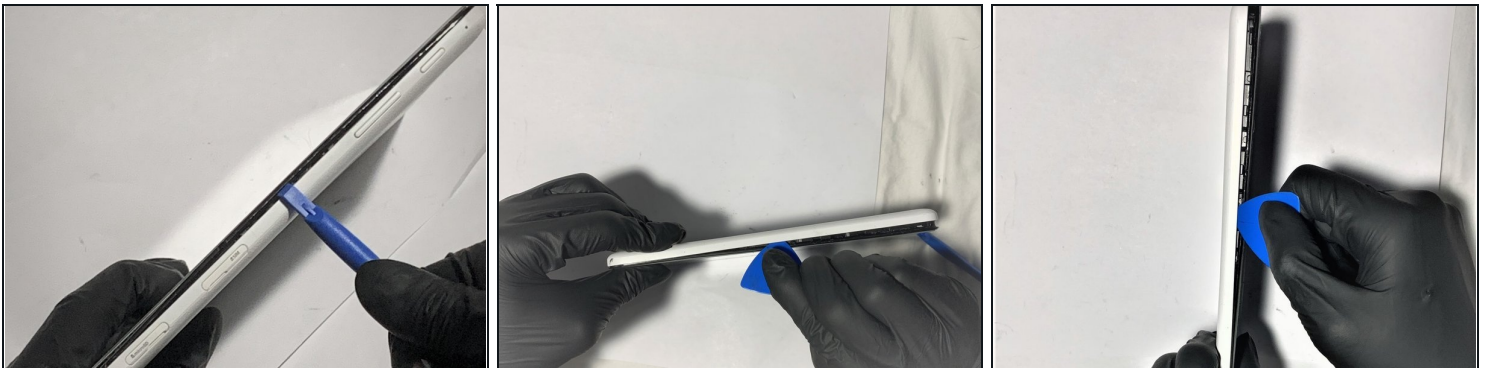
[iFixit Opening Tool](#) (1)


[1 x Opening Picks](#) (1)

[Phillips #00 Screwdriver](#) (1)

[Heat Gun](#) (1)

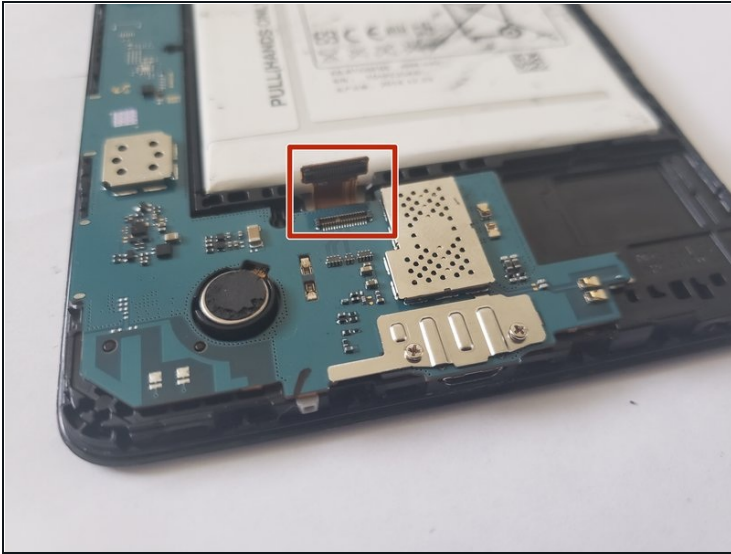
Step 1 — Home Button



 Power off the tablet.

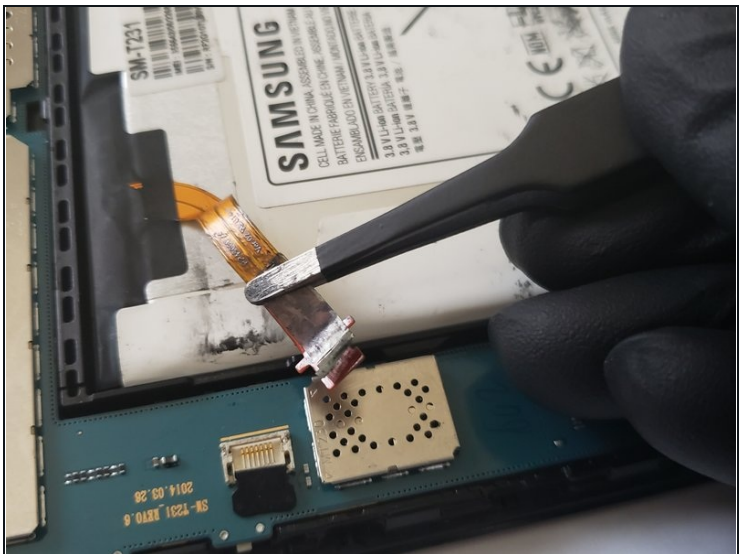
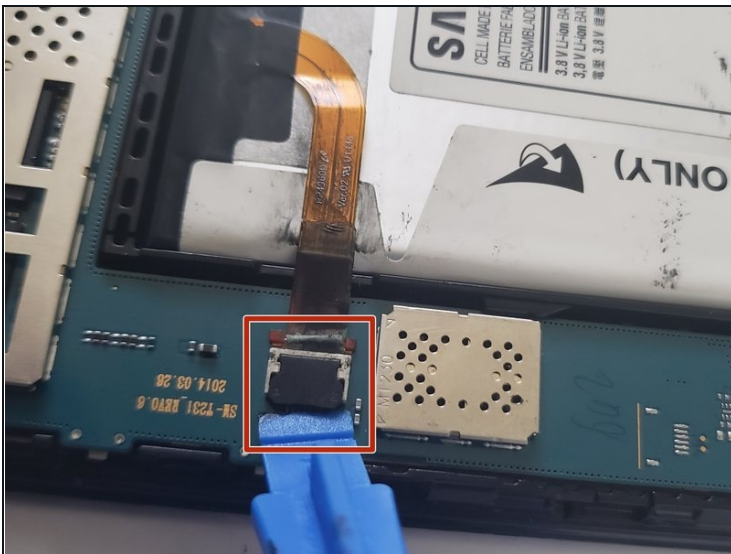
- Using a *plastic opening tool*, pry open the back case by inserting the tool into the seam and moving it in the gap between front and back panel of the tablet.
- Insert *triangle opening picks* into the gaps as you work to keep the back panel separated.

Step 2



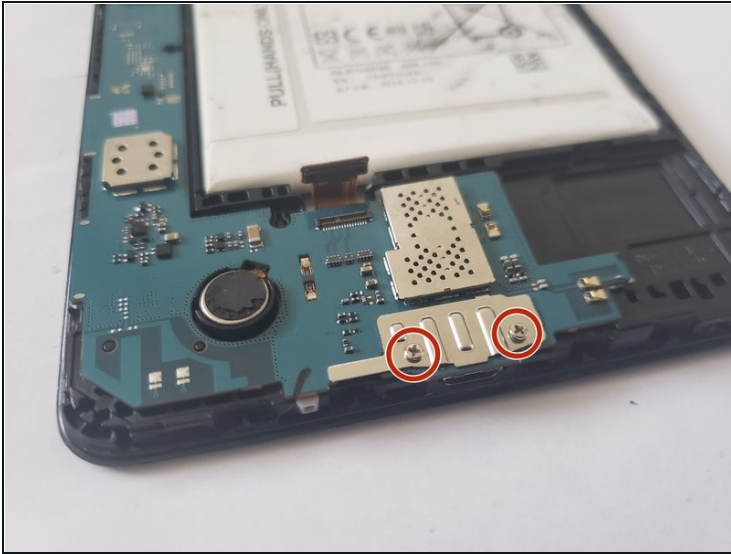
- Using the *flat end of a spudger*, unclip the press fit connections below the battery and at the top near the camera.

Step 3



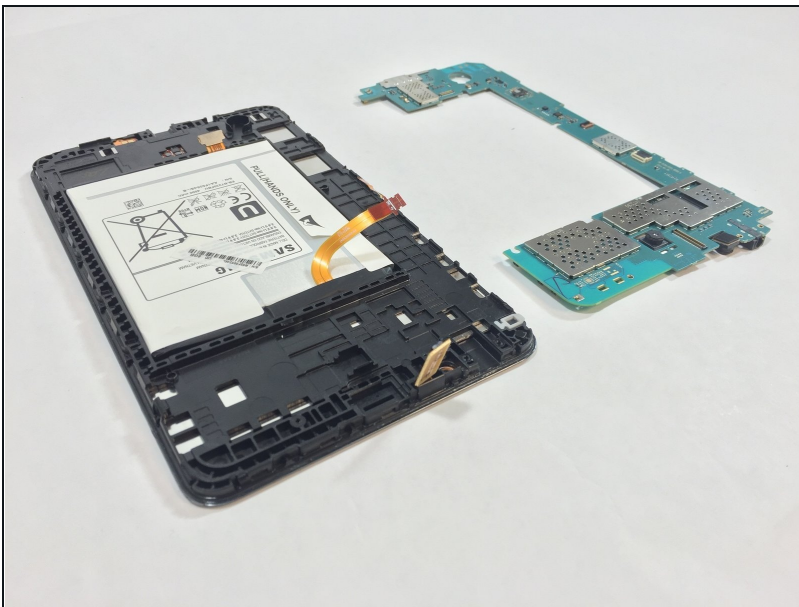
- Use a *plastic opening tool* to pull up the locking clip of battery ZIF connector.
- Disconnect the battery by sliding out the golden ribbon cable.

Step 4



- Use a *Phillips #00* screwdriver to remove five *1.7 mm* screws from the top and bottom edges of the motherboard.

Step 5



- Use a plastic opening tool to carefully lift up the motherboard and remove it.

⚠ Do not twist the motherboard if it does not lift out. Double check that all of the connections have been disengaged and use another technique to lift it.

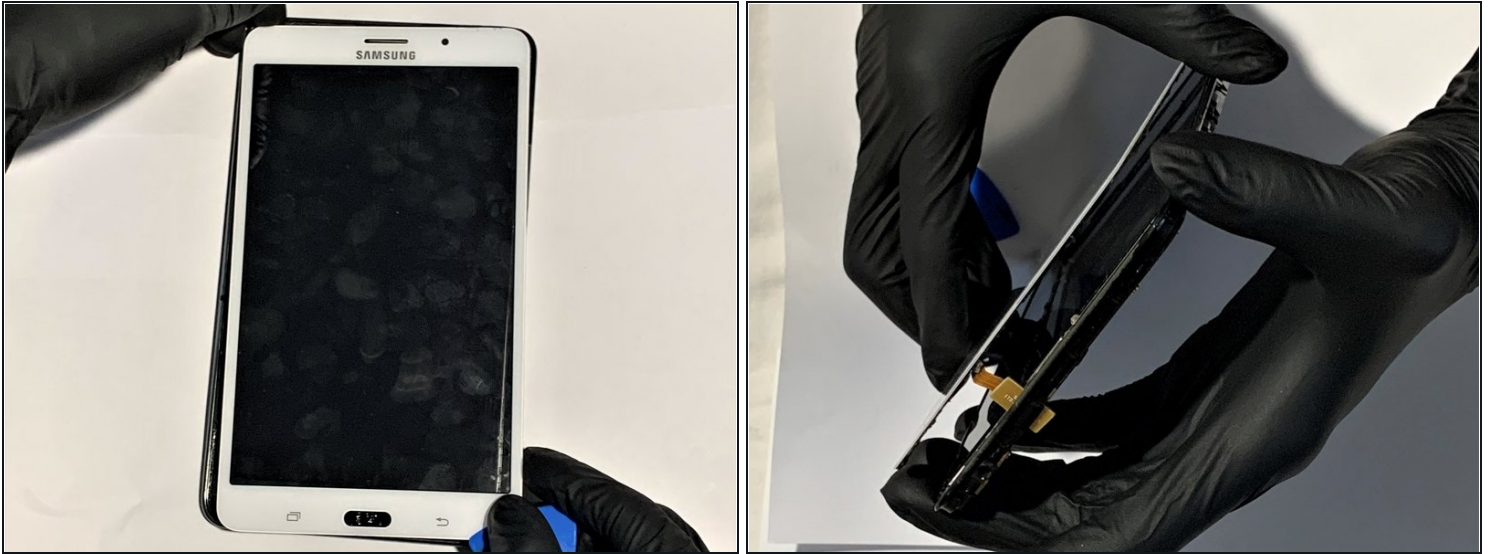
Step 6



- ① Use a heat gun or hair drier to heat up the edge of the digitizer. This may help to remove it easily. Do not heat it too much.
- To remove the digitizer, insert and move a *plastic opening pick* to create a gap between the digitizer and screen.
- Carefully lift up the digitizer a little bit and insert a [plastic opening card](#) to separate the digitizer from the screen.

⚠ Do not use sharp edge tool, as it may damage your screen.

Step 7



- Carefully lift up the digitizer. As you do, you will need to slide one of the press fit connectors through the midframe.

⚠ Be cautious that you do not sever the connector cable.

Step 8



- Carefully remove the old home button and replace with a new one.

To reassemble your device, follow these instructions in reverse order.

