



Nissan Frontier 2004-2015 Faulty Power Window Switch Fix

In this guide, I will demonstrate how to fix a...

Written By: Andrew Kane



INTRODUCTION

In this guide, I will demonstrate how to fix a faulty power window switch on a 2005 Nissan Frontier (King Cab). I did this after the driver-side switch for controlling the passenger window did not work. After further inspection of the switch circuit board, I noticed that the electrical contacts were dirty. After the electrical contacts and reinstalling, the windows worked again.




TOOLS:

- [Car Interior Trim and Molding Tool Set](#) (1)
 - [Cotton Swabs](#) (1)
 - [Isopropyl Alcohol](#) (1)
 - [Spudger](#) (1)
-

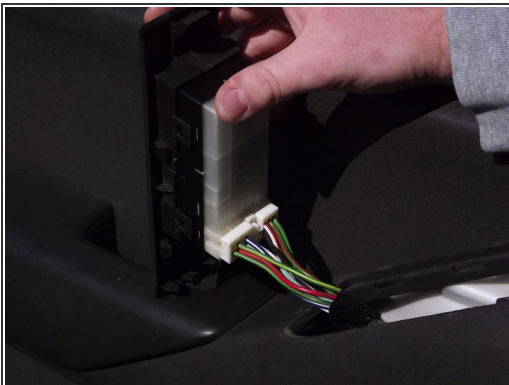
Step 1 — Nissan Frontier 2004-2015 Faulty Power Window Switch Fix



 Approach driver-side door controls.

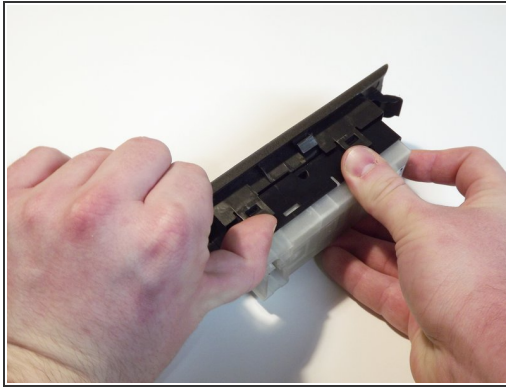
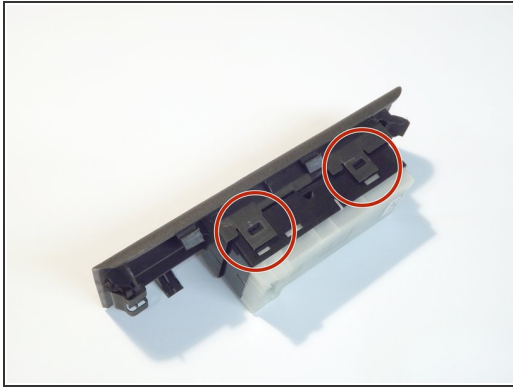
- Insert the first trim tool on the right side of the button molding.
- Insert the second trim tool on the left, and shimmy it open.

Step 2



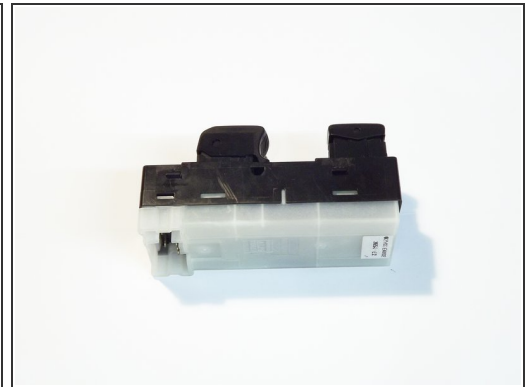
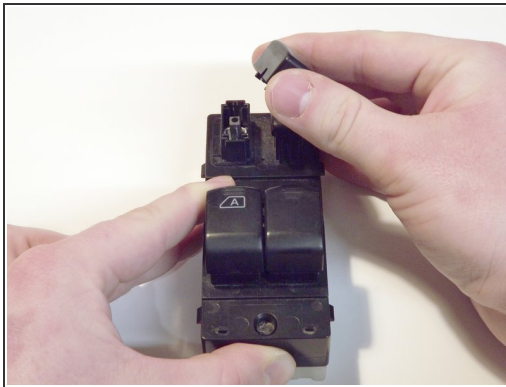
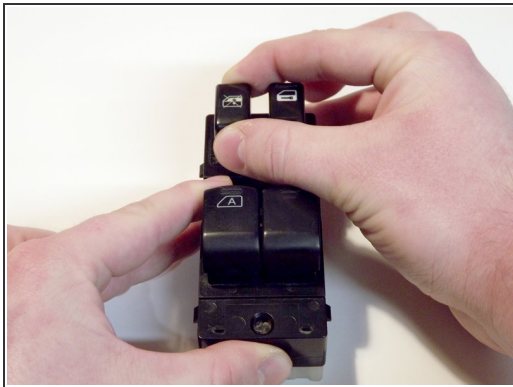
- Unplug the assembly from the door.

Step 3



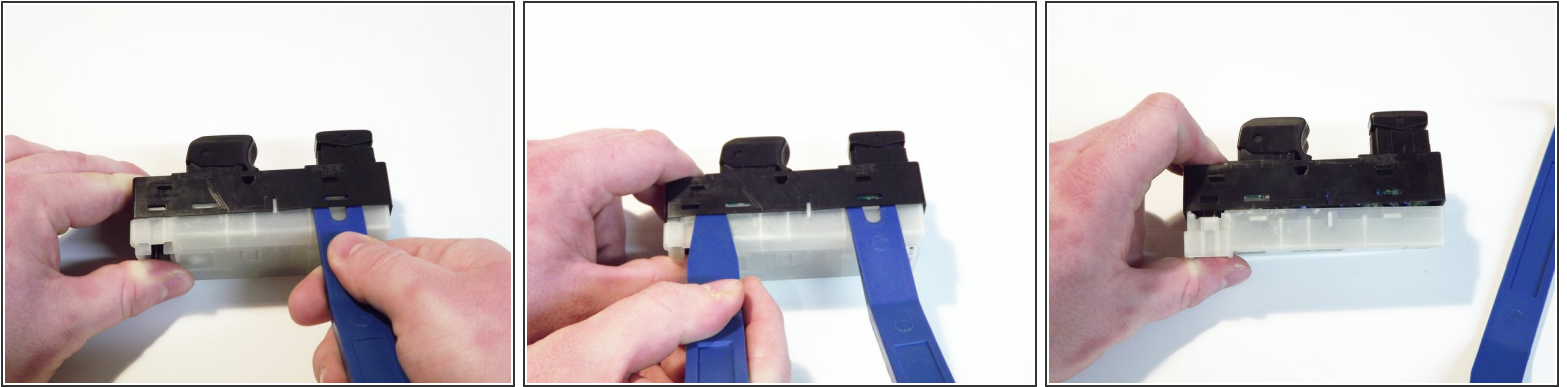
- Pry the marked latches off on both sides to remove the molding around the button assembly.

Step 4



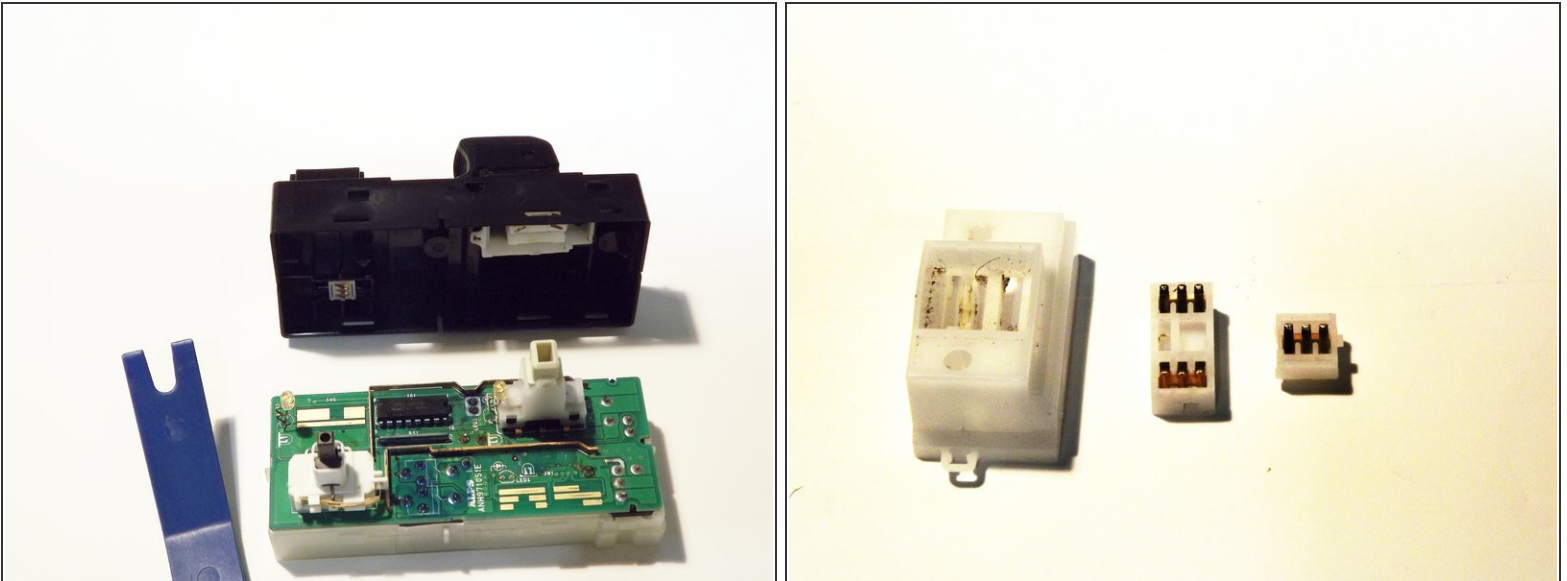
- Remove the window lock toggle by pulling it off.

Step 5



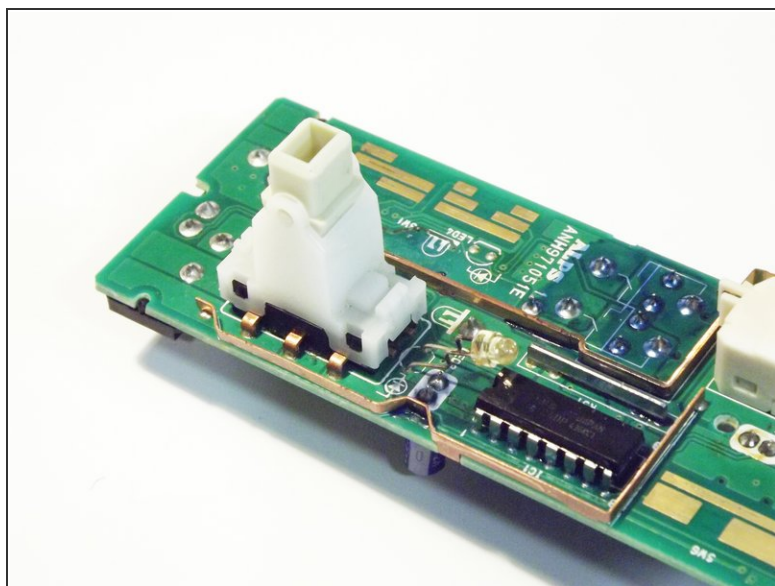
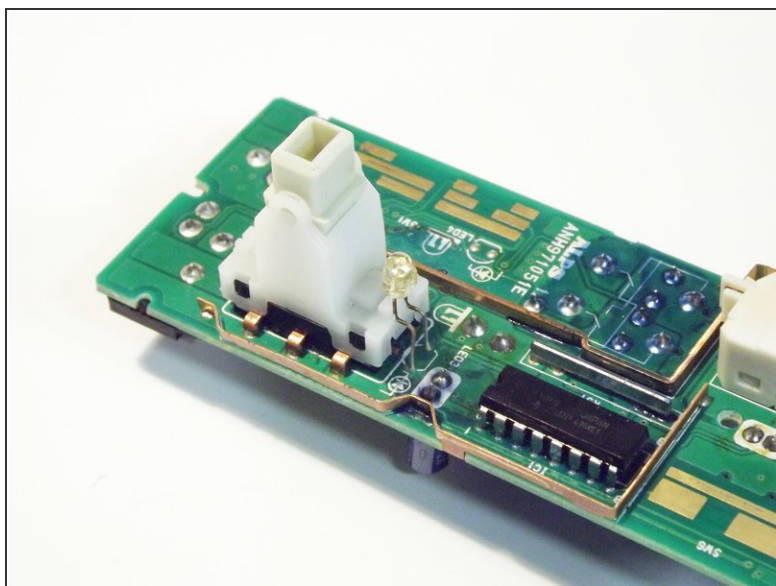
- Insert the U-shaped trim tool under the right latch.
- Insert the narrow-ended trim tool between the two latches on the left.
- Shimmy it open and repeat the process for the other side, separating the black housing from the rear casing and exposing the circuit board.

Step 6



- i** Once open, three small pieces will fall out of the black housing. These are moving contacts and contact guides that are essential for the switches function. Be sure to save them.

Step 7

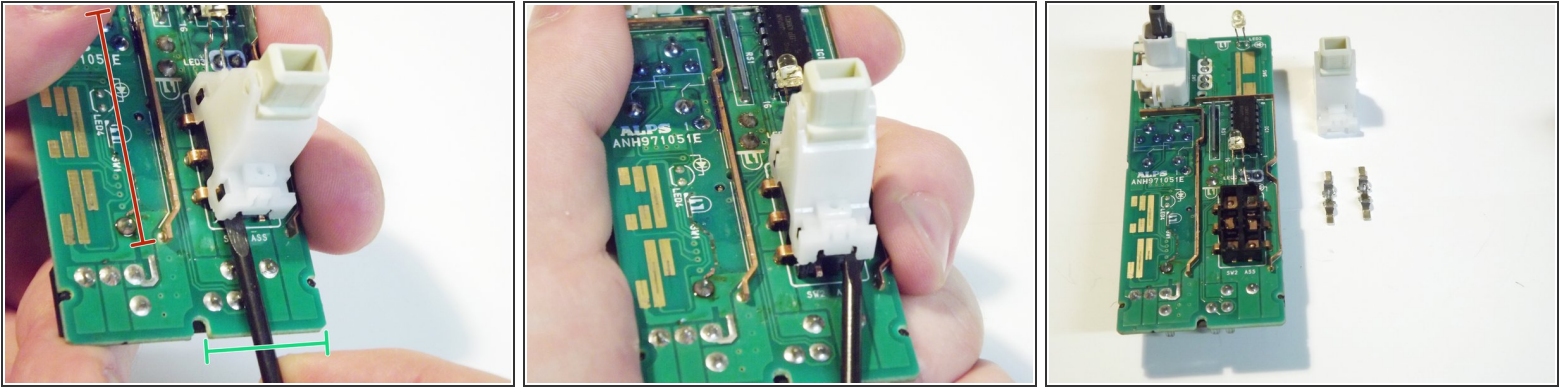


 There is a white lever on the circuit board, and next to it there is an LED.

- Bend this LED back to allow for the removal of the lever.

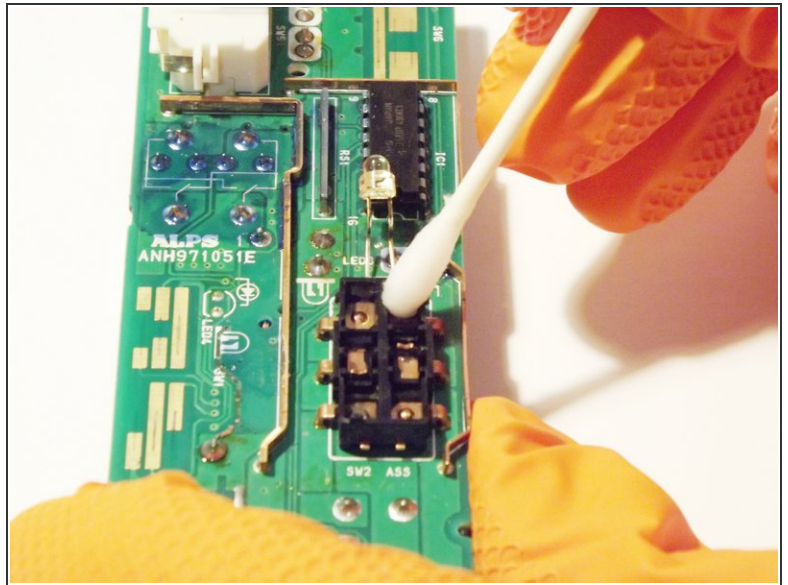
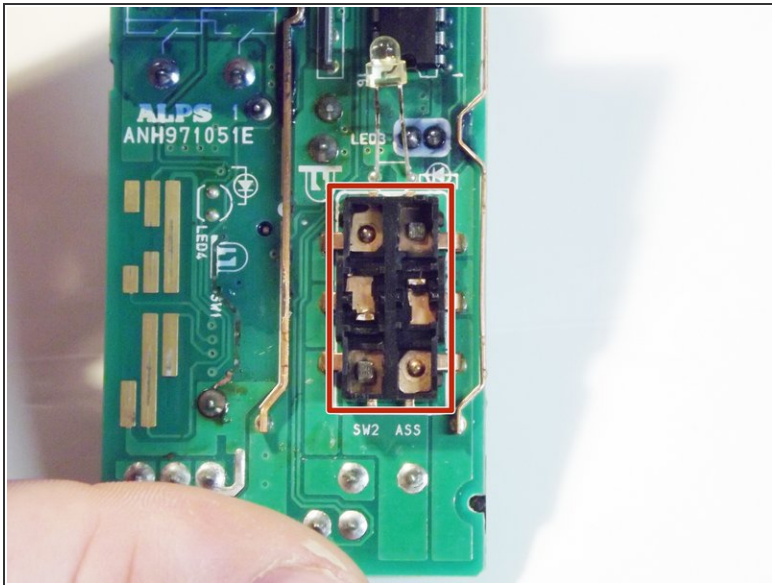
 Remember to bend this back into place during reassembly.

Step 8



- Using a thin spudger, carefully pry these two latches off of the lever.
⚠ Do not pry against the copper rail marked red. Only pry against the area marked green.
- Carefully wiggle the lever off, and remove the small metal parts from under the lever. These parts are moving electrical contacts.
- ⓘ These moving electrical contacts may fly out upon removal of the lever. Be sure to clear the area to avoid losing them.

Step 9



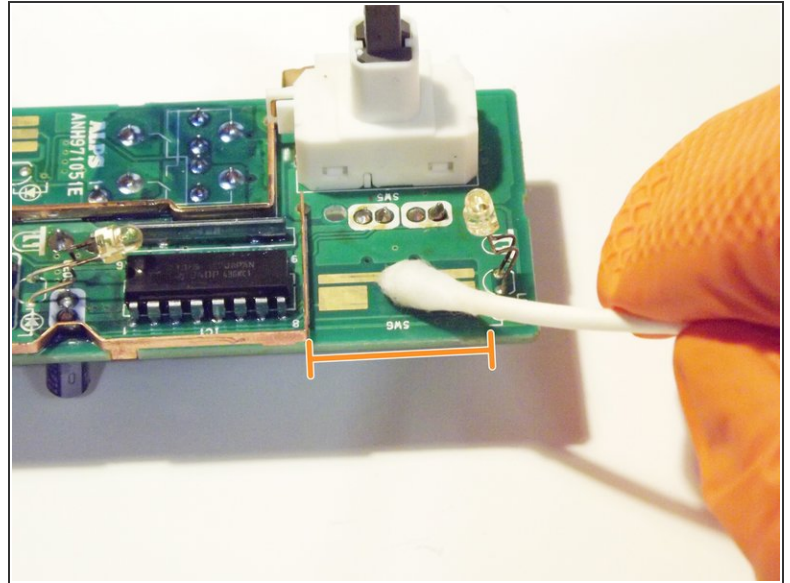
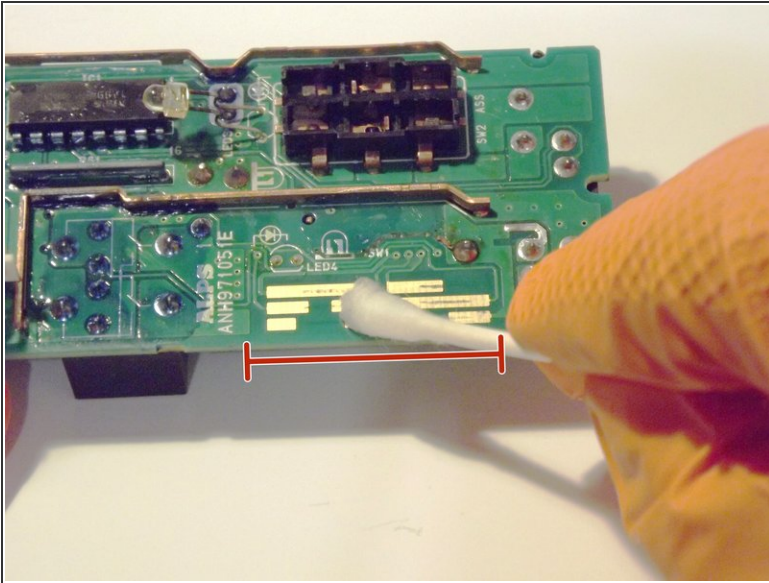
- Clean each of the six contacts shown with cotton-swabs soaked in isopropyl alcohol.


⚠ Do not over soak the board.

ⓘ Be sure to wear gloves.

☑ After cleaning the board, let it dry for 5 minutes

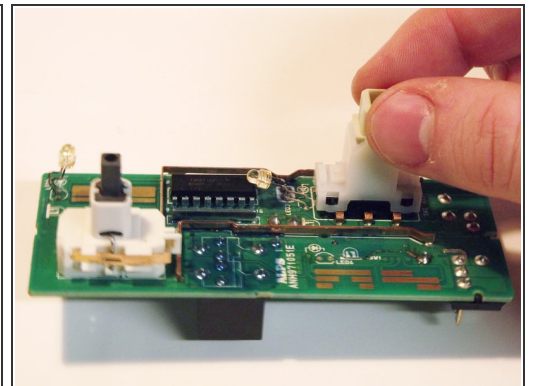
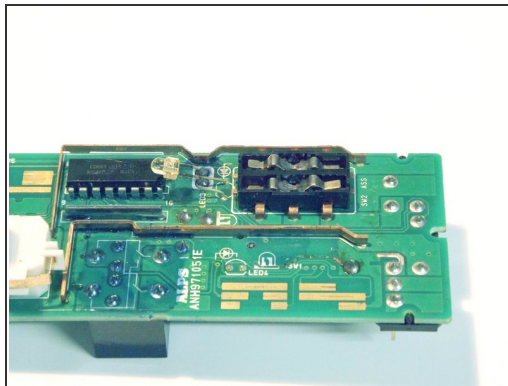
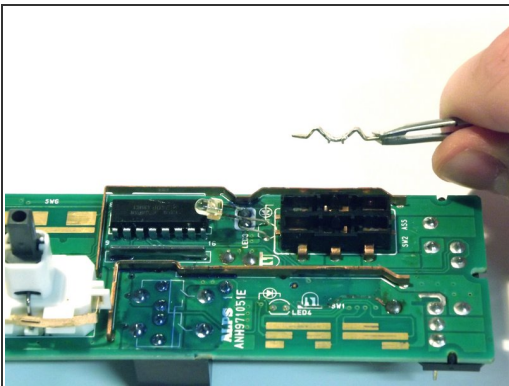
Step 10



 This step is optional, but recommended.

- Clean the other contacts for the:
 - Driver-window power switch
 - Vehicle lock switch

Step 11



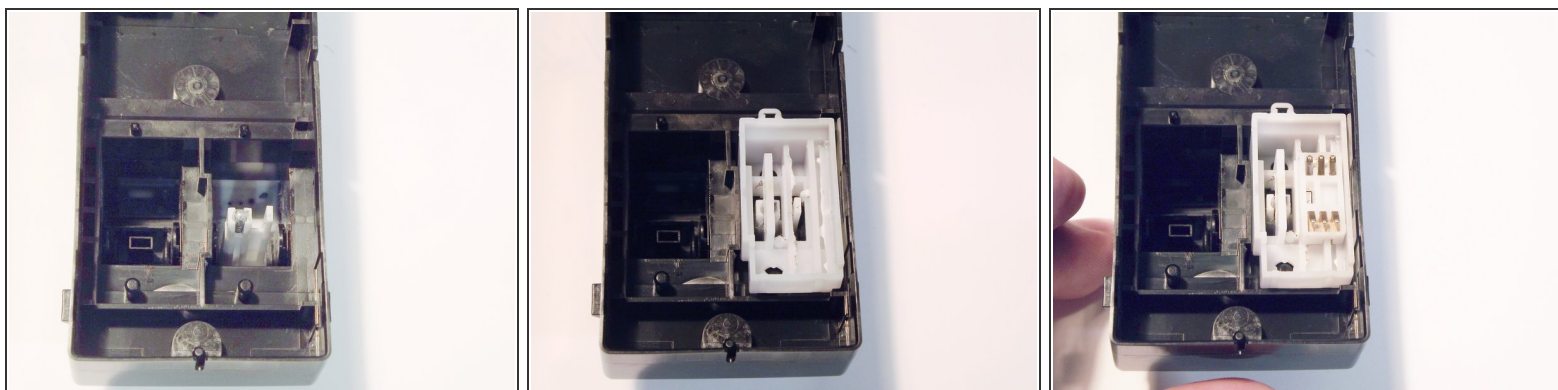
- Place the moving electrical contacts back into its housing as shown.
- Snap the lever back onto its housing.

Step 12



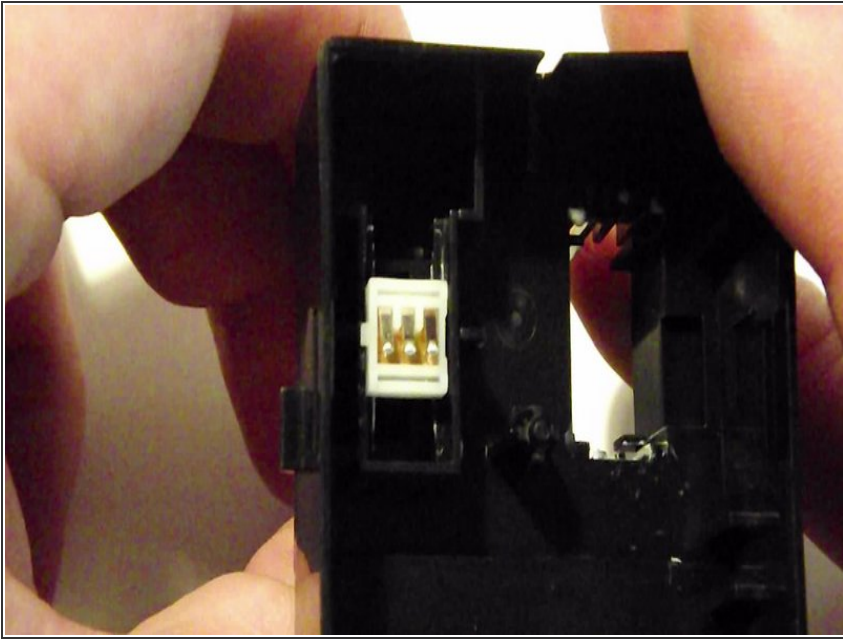
- Place this moving electrical contact onto the vehicle lock lever.
- Ensure this nub sticks out this way.
- These parts will be fastened to the driver window lever.

Step 13



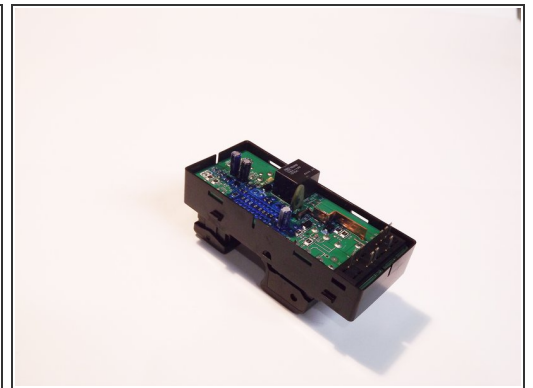
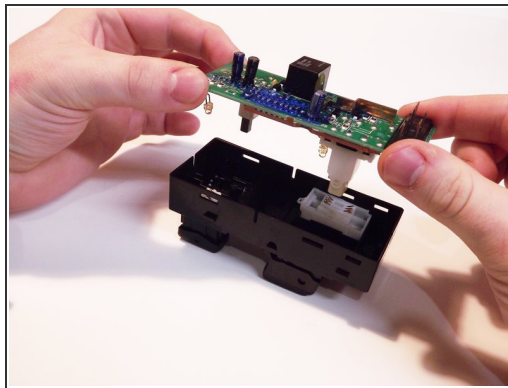
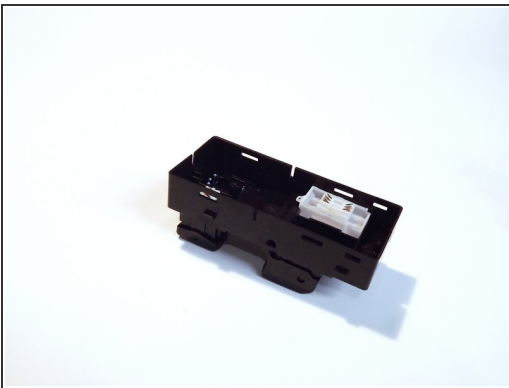
- Press the guide (the bigger part) onto the driver-window lever as shown.
- Position the moving contacts onto the guide as shown.

Step 14



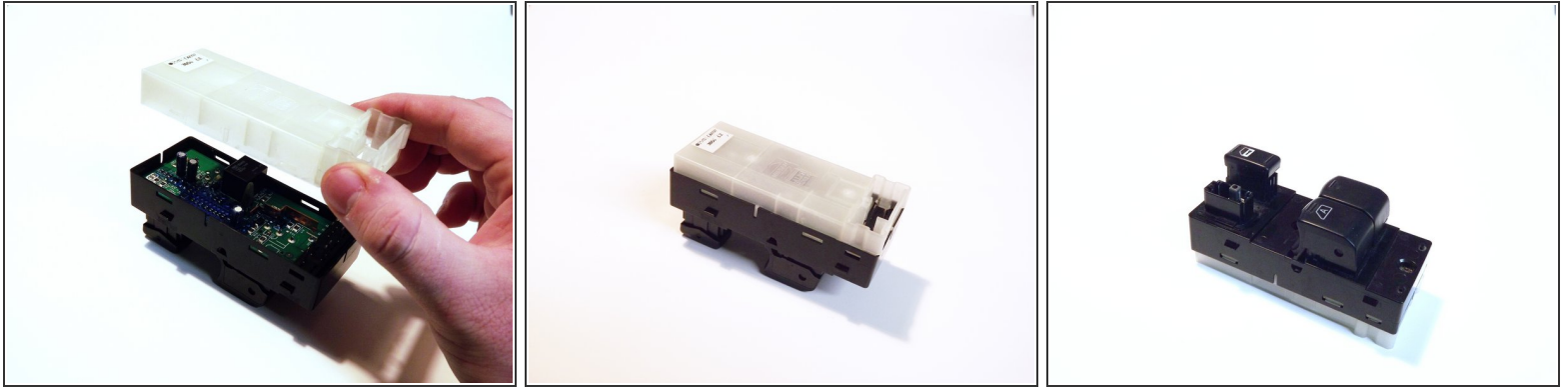
- Ensure the assembly works by carefully pushing and pulling the buttons. It should move like this.

Step 15



- ☑ Ensure all LEDs on the board are positioned correctly.
 - Position the circuit board over the housing, as shown.
 - Lower the circuit board and press it down.

Step 16



- Snap the Rear Shielding back into place, as shown.
- Test all the buttons, make sure that they are not jammed.
 - ❗ If they are jammed, redo the previous 5 steps.

Once the power window switch assembly has been rebuilt, simply use steps 3 to 1 to help you reinstall the switches.