



MacBook Pro 13" Retina Display Late 2012 Display Assembly Replacement

Prereq for upper case.

Written By: Walter Galan



INTRODUCTION

Prereq for upper case.

TOOLS:

[TR8 Torx Security Screwdriver](#) (1)

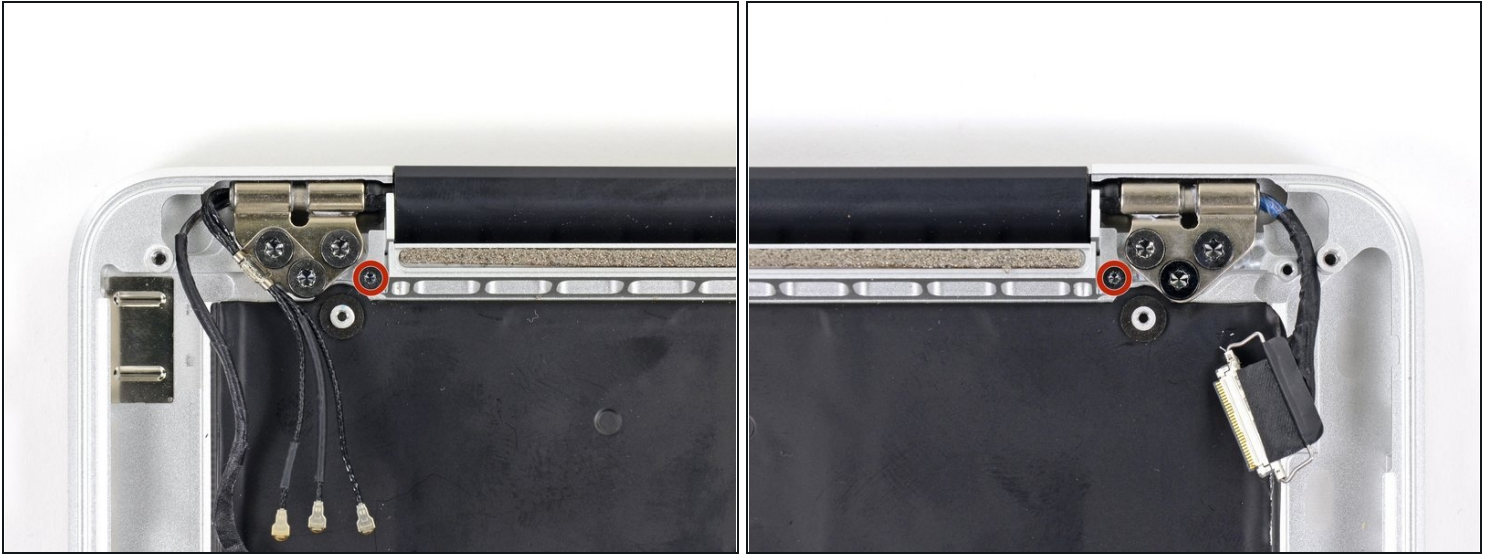
[Tweezers](#) (1)

Step 1 — Display Assembly



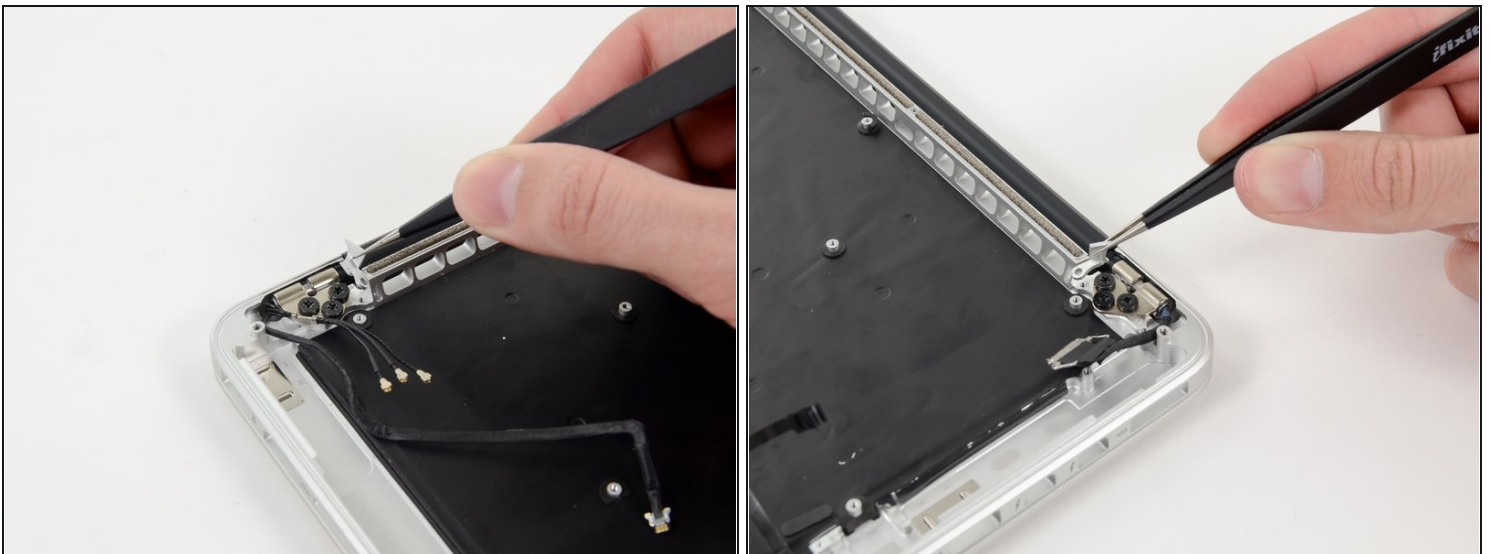
- Use a pair of [tweezers](#) to lift the rubber hinge covers up off the right and left display hinges.

Step 2



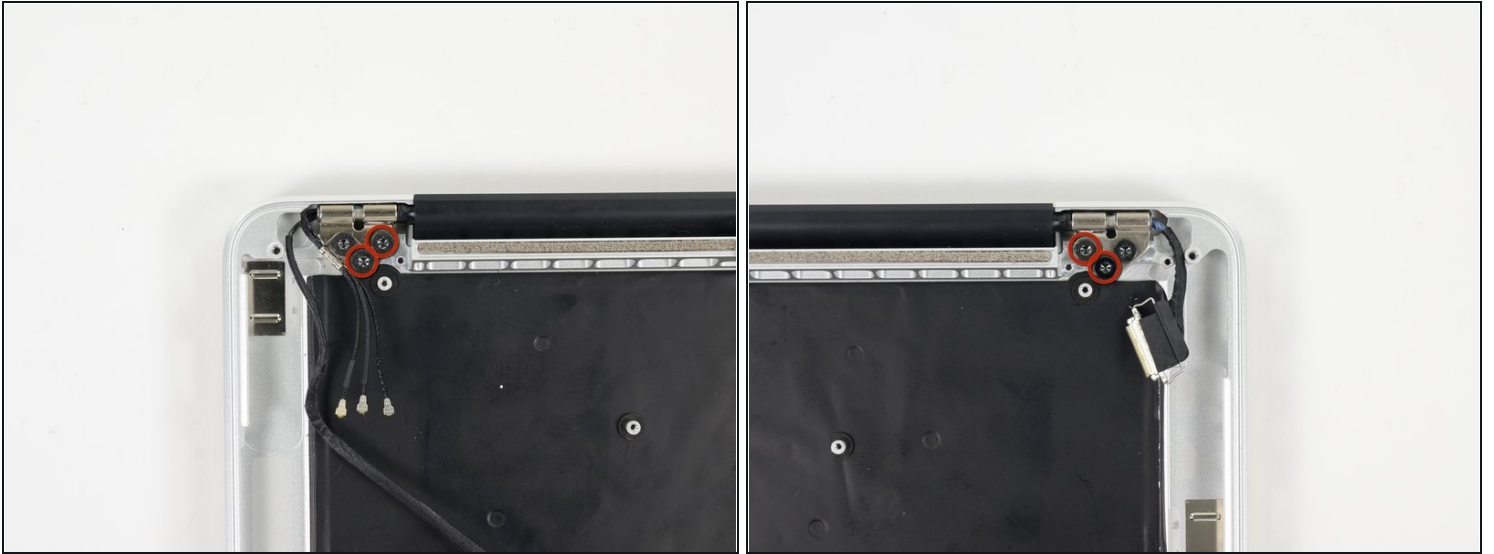
- Remove the 3.2 mm T5 Torx screws (one on each side) securing the aluminum hinge brackets to the upper case.

Step 3



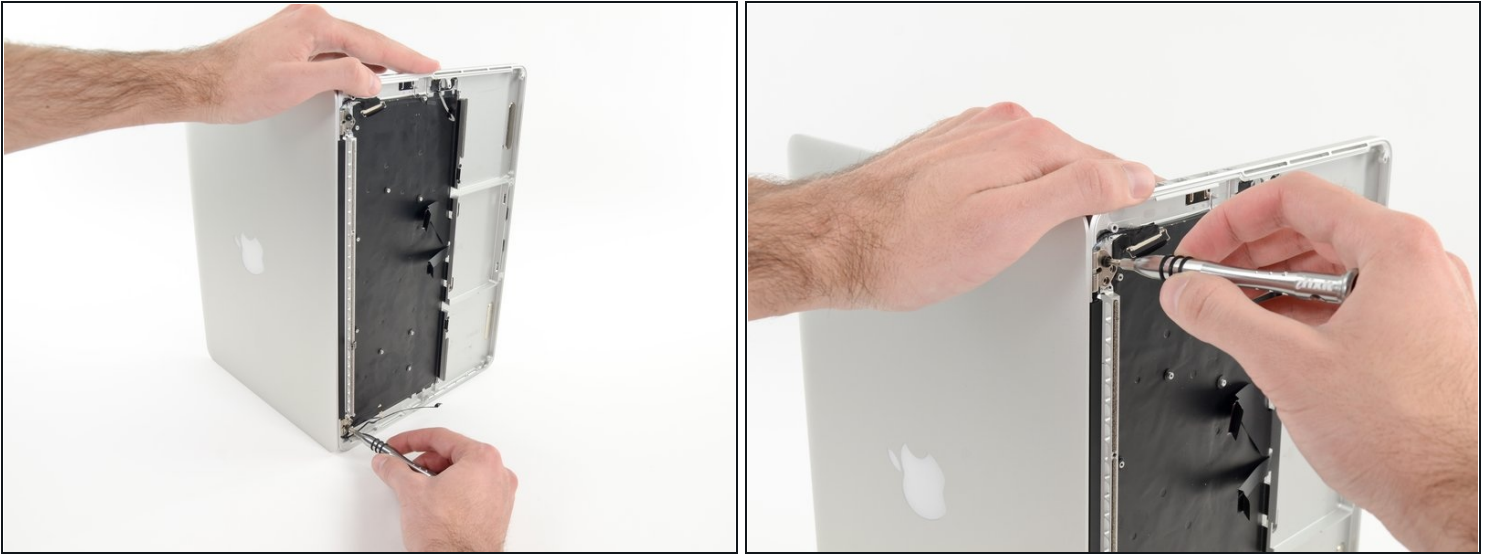
- Use a pair of tweezers to lift aluminum hinge brackets off the right and left display hinges.

Step 4



- Remove the four inner 5.3 mm T8 Torx screws (two on each side) securing the display to the upper case.

Step 5



- ☑ Open the MacBook Pro approximately 110 degrees, and place it sideways on the table, as shown.
- While holding the display and upper case together with your left hand, remove the remaining T8 Torx screw from the lower display bracket.
- ⚠ Be sure to hold the display and upper case together with your left hand. Failure to do so may cause the freed display/upper case to fall, potentially damaging each component.
- Remove the last remaining T8 Torx screw securing the display to the upper case.

Step 6



- Grip both halves of the device, one in each hand.
- Gently push forward on the bottom half of the device to detach it from the display assembly.
- Carefully set each component aside, making sure to set down the lower half keyboard-side down.

To reassemble your device, follow these instructions in reverse order.