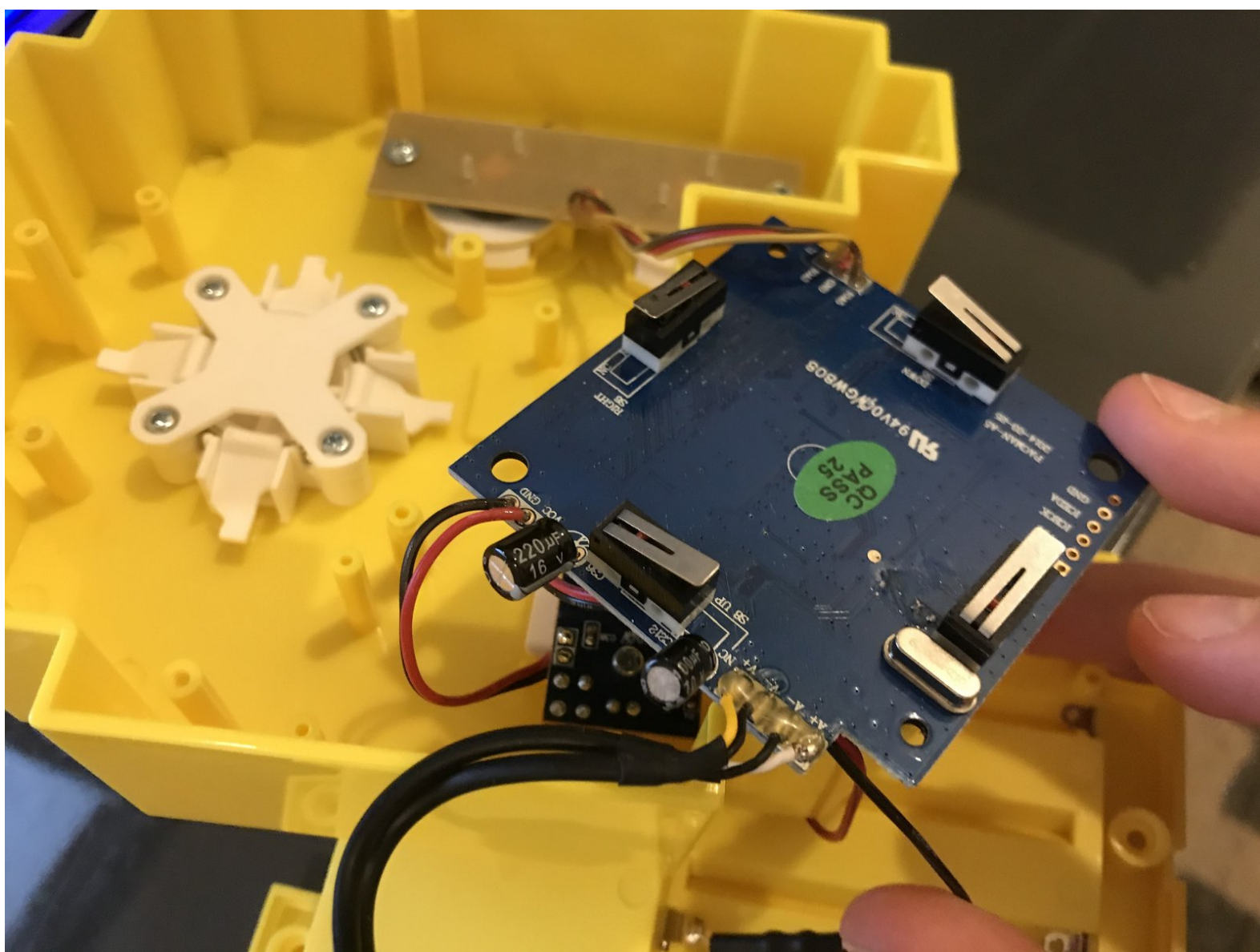




# Pac-Man Connect and Play Joystick Switchboard Replacement

Written By: Levi G

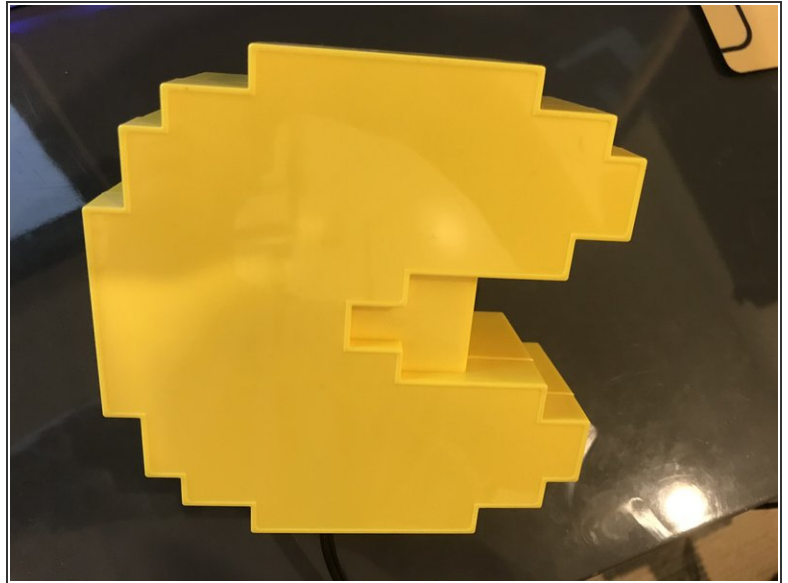
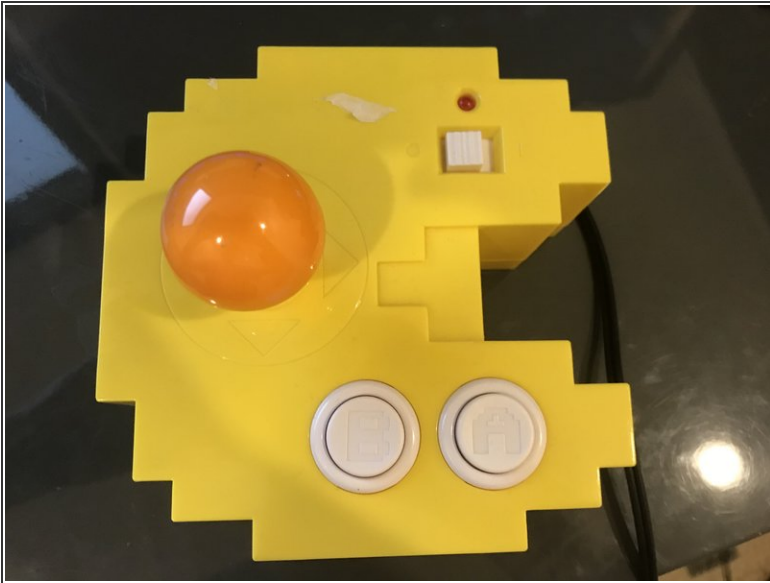




## TOOLS:

- [Philips Head Screwdriver: Size J1](#) (1)
-

## Step 1 — Joystick Switchboard



- Flip over the device

⚠ Ensure the device has no power and is not plugged into a TV

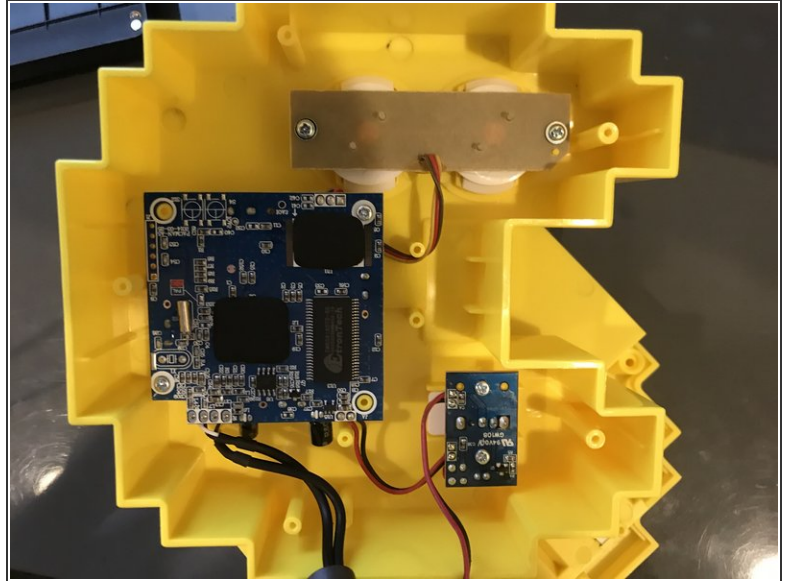
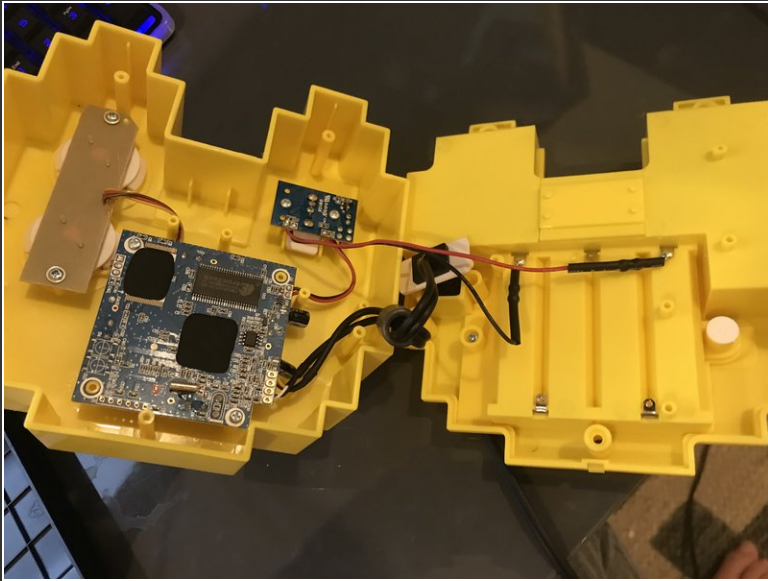
## Step 2



- Remove these 5 Phillips Head screws

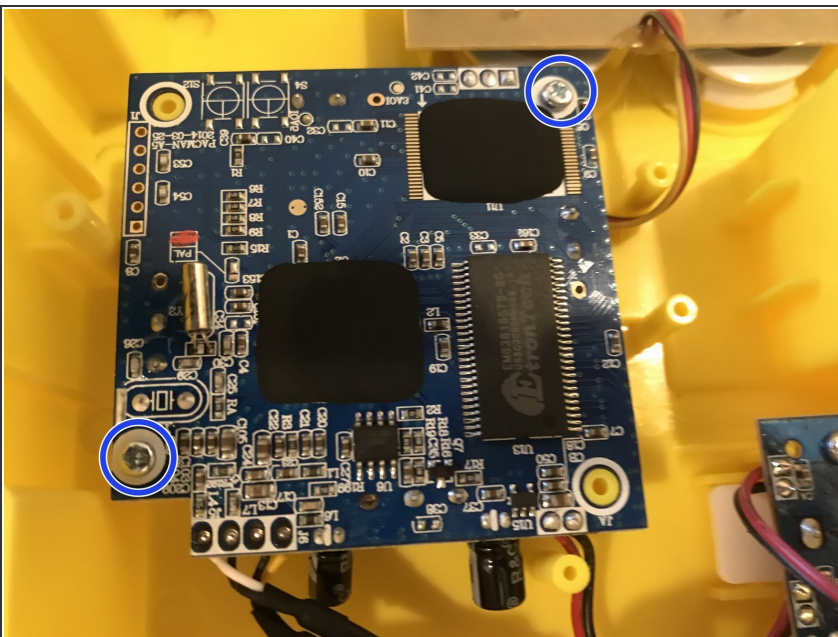


### Step 3



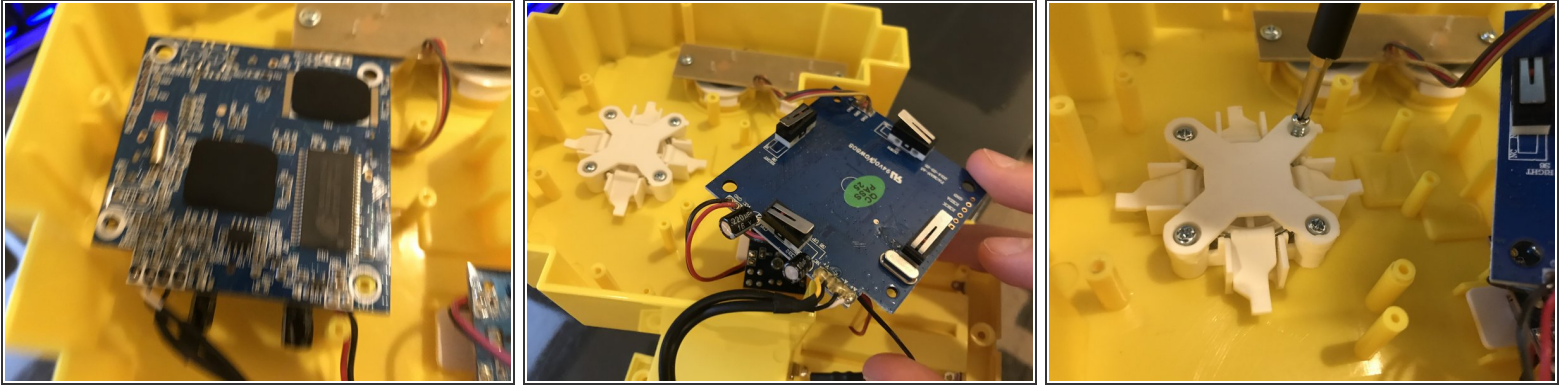
- You can now open the device

### Step 4



- Remove these 2 screws (phillips)

## Step 5



- You can now remove the board
- ⓘ You can, at this time, also remove the plastic X that holds the joystick spring in place.

To reassemble your device, follow these instructions in reverse order.