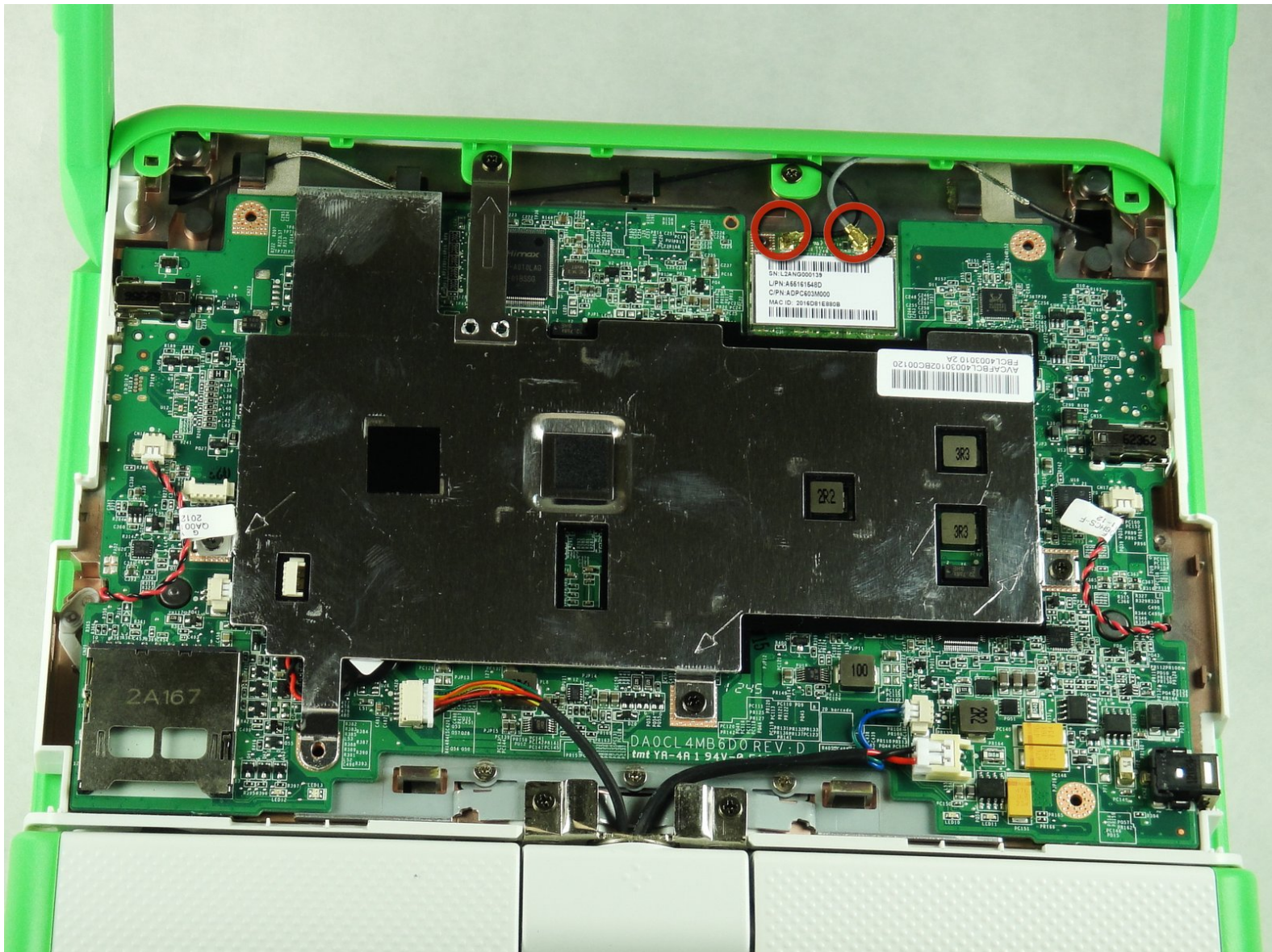




# OLPC XO-4 Touch Wireless Card Replacement

Install a wireless card into the OLPC XO-4 Touch.

Written By: Zach Yasuda



---

# INTRODUCTION

Learn how to install a wireless card into the OLPC XO-4 Touch.



## TOOLS:

- [Phillips #1 Screwdriver](#) (1)
-



## Step 1 — Battery



- Turn the laptop upside-down, with the handle facing away from you.

## Step 2



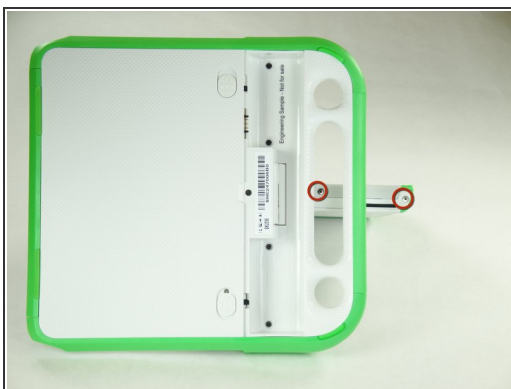
- Pull the lock tabs towards the green outer edges of the laptop.
- Hold the left lock tab in the unlock position until the battery is completely removed in the next step.

## Step 3



- Lift up on the middle of the battery to remove it from the device.

## Step 4 — Screen Frame



- Remove the two 4mm Phillips #1 screws underneath the screen on the right-hand side.
- Rotate the screen 180° and remove the other two screws.
- ⓘ You will have to put your screwdriver through the handle in order to reach the middle screw for both sides.



## Step 5



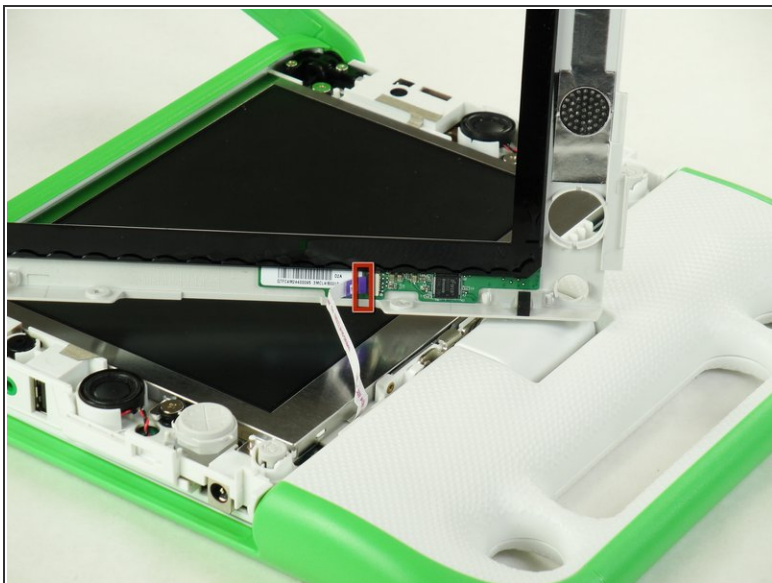
- Remove the green side panel by pressing down on the small green button on the top and sliding the panel up.
- Repeat the step above for the panel on the other side.

## Step 6



- ⚠ Be careful not to pull the bottom too far out because a ribbon cable is under the frame and can easily break.
- Gently lift up the lower part of the frame and pull it down to free the screen frame.

## Step 7



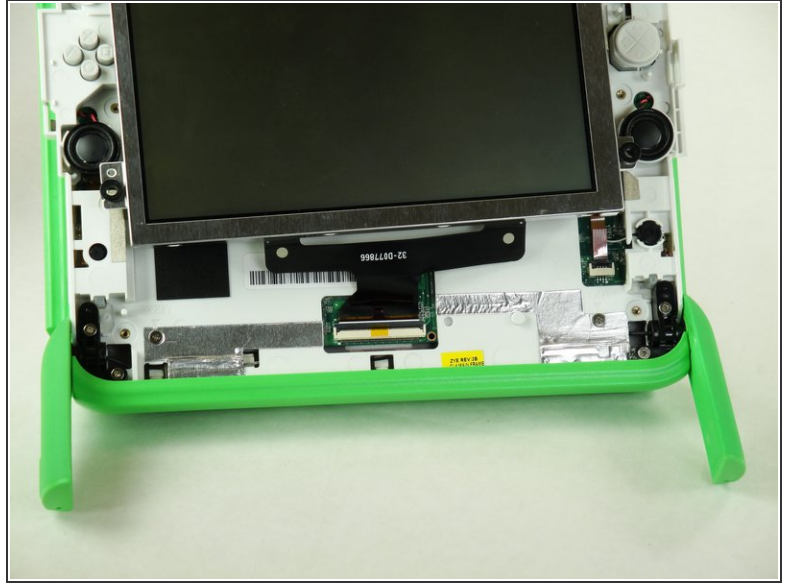
- Lift the black connector and pull the ribbon cable out by the purple tab, freeing the frame.

## Step 8 — Screen



- Remove the four 7.62mm screws using a Phillips #1 screwdriver.

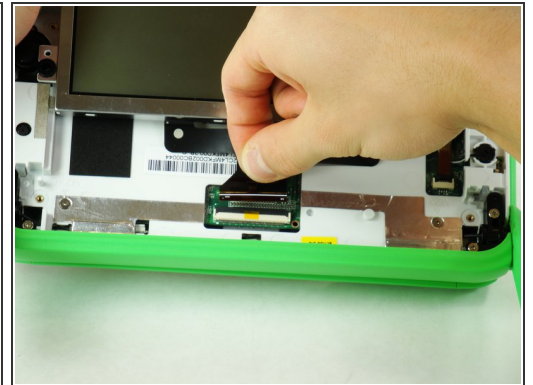
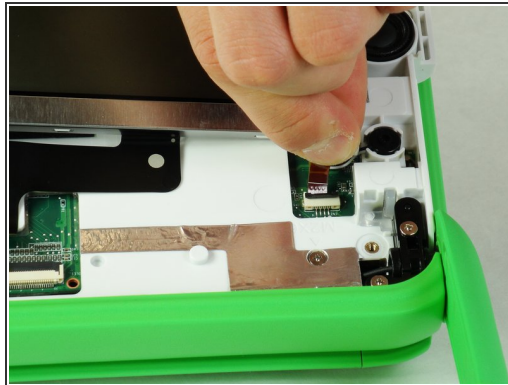
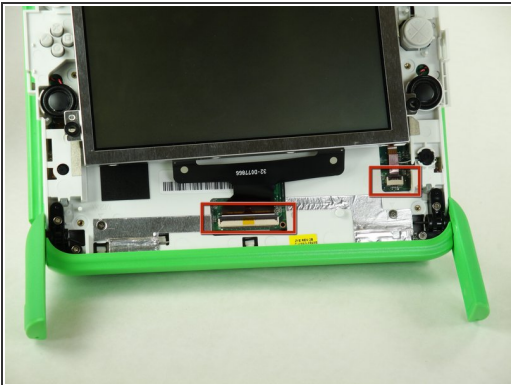
## Step 9



⚠ Be careful not to pull the screen out too far. There are two ribbon cables attached to the screen, and they can easily break.

- Carefully lift the screen out.

## Step 10



ⓘ Notice that the laptop in this picture has been turned 180° with the antennas now below the screen.

- For each ribbon cable, lift up the black connector and gently pull the ribbon cables out by the plastic tabs.

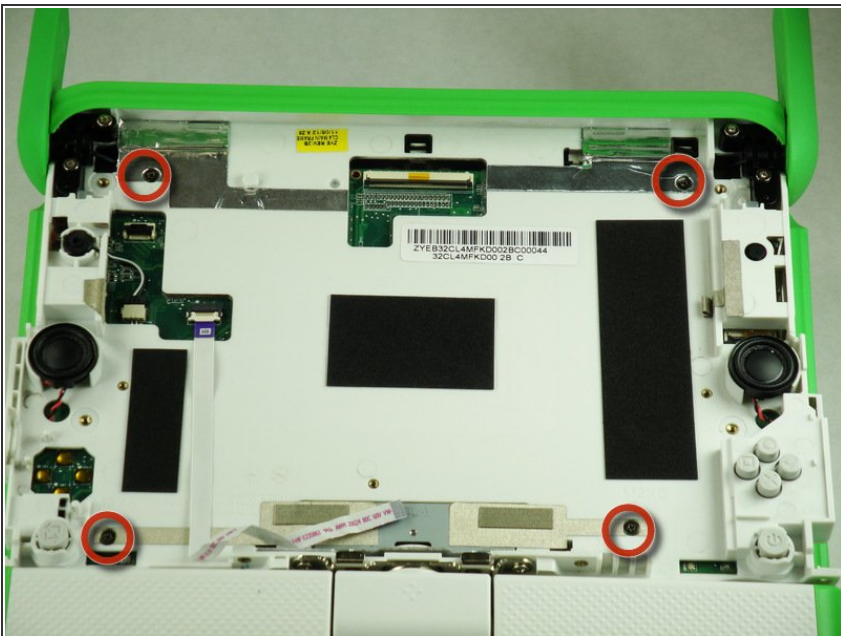


## Step 11



- Remove the screen from the laptop.

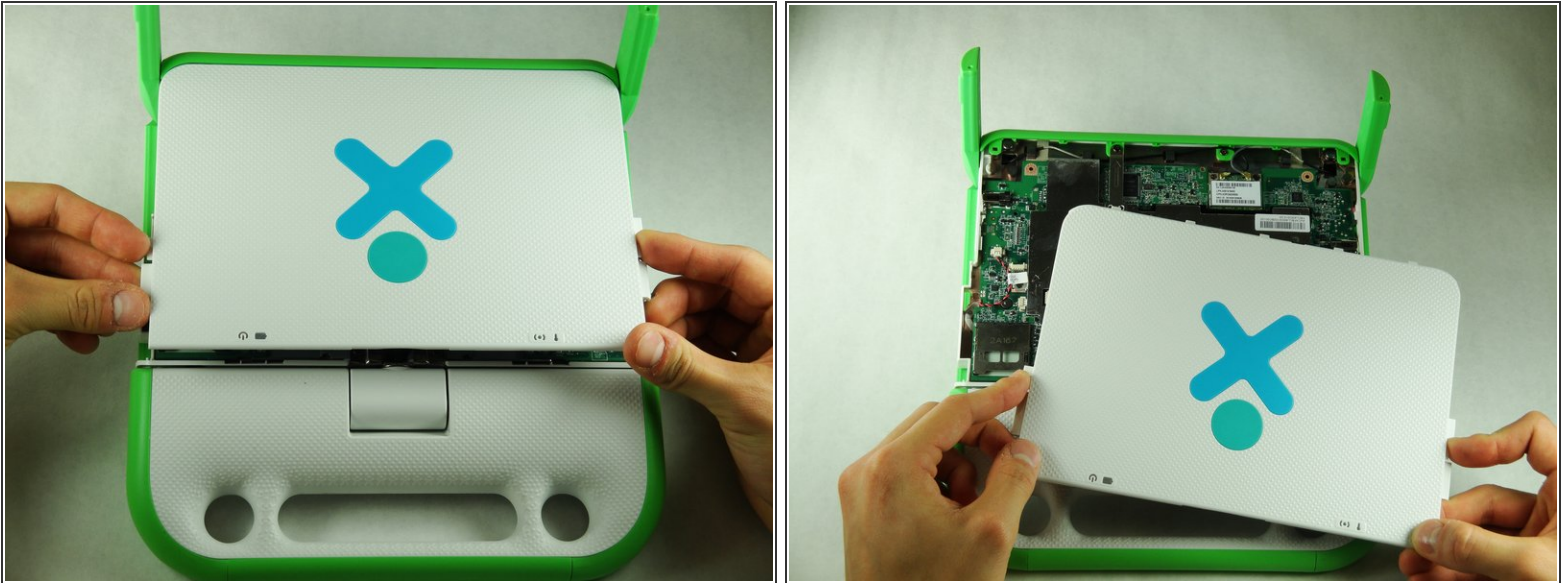
## Step 12 — Back Cover



- Remove the four 6mm screws using a Phillips #1 screwdriver.

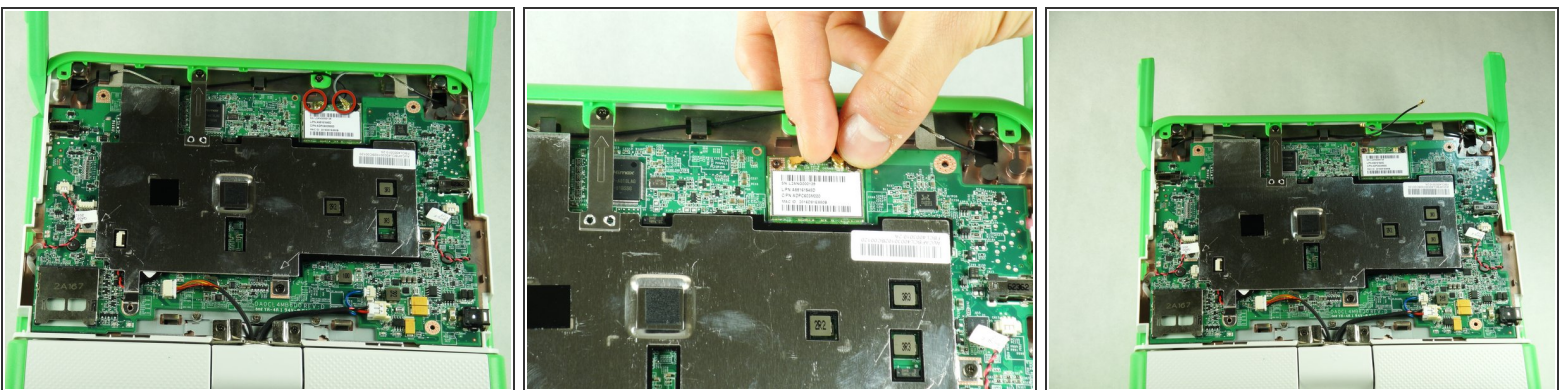


## Step 13



- Rotate the top half of the laptop so that the back cover is facing you.
- Pull up the tabs on the lower part of the back cover and pull it down and away from the antennas.
- Remove the back cover by gently lifting it off of the laptop.

## Step 14 — Wireless Card



- ⚠ When pulling out the connectors, make sure to hold the metal connector instead of the wire.
- Gently pull out the two antenna connectors by pulling them away from the motherboard.

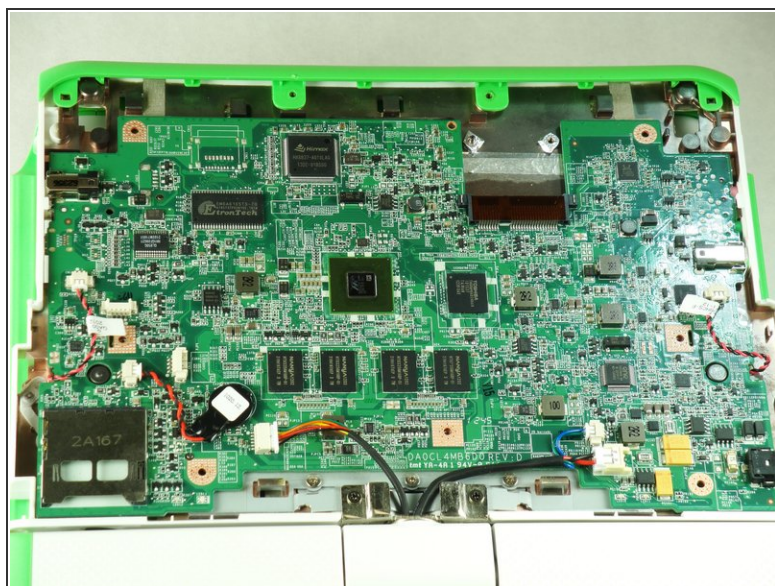
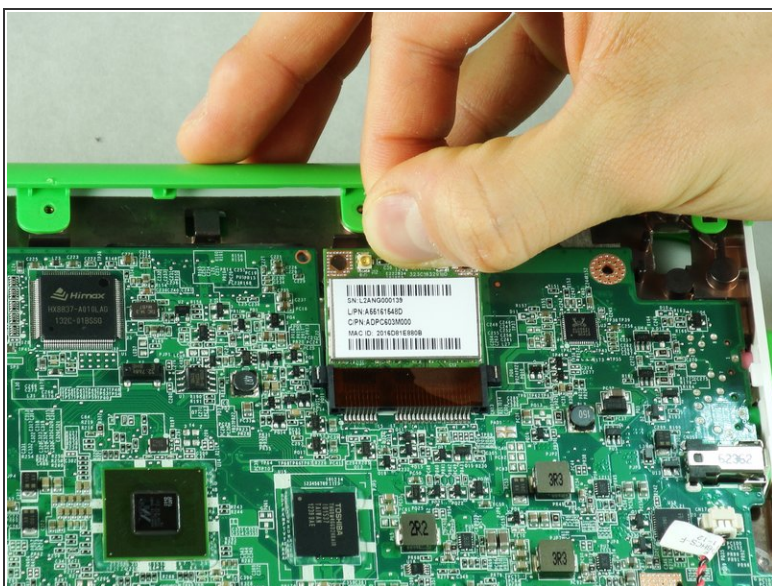


## Step 15



- Remove the black 4mm Phillips #1 screw holding the wireless card in.

## Step 16



- Remove the wireless card from the laptop by gently sliding it out of its socket.

To reassemble your device, follow these instructions in reverse order.