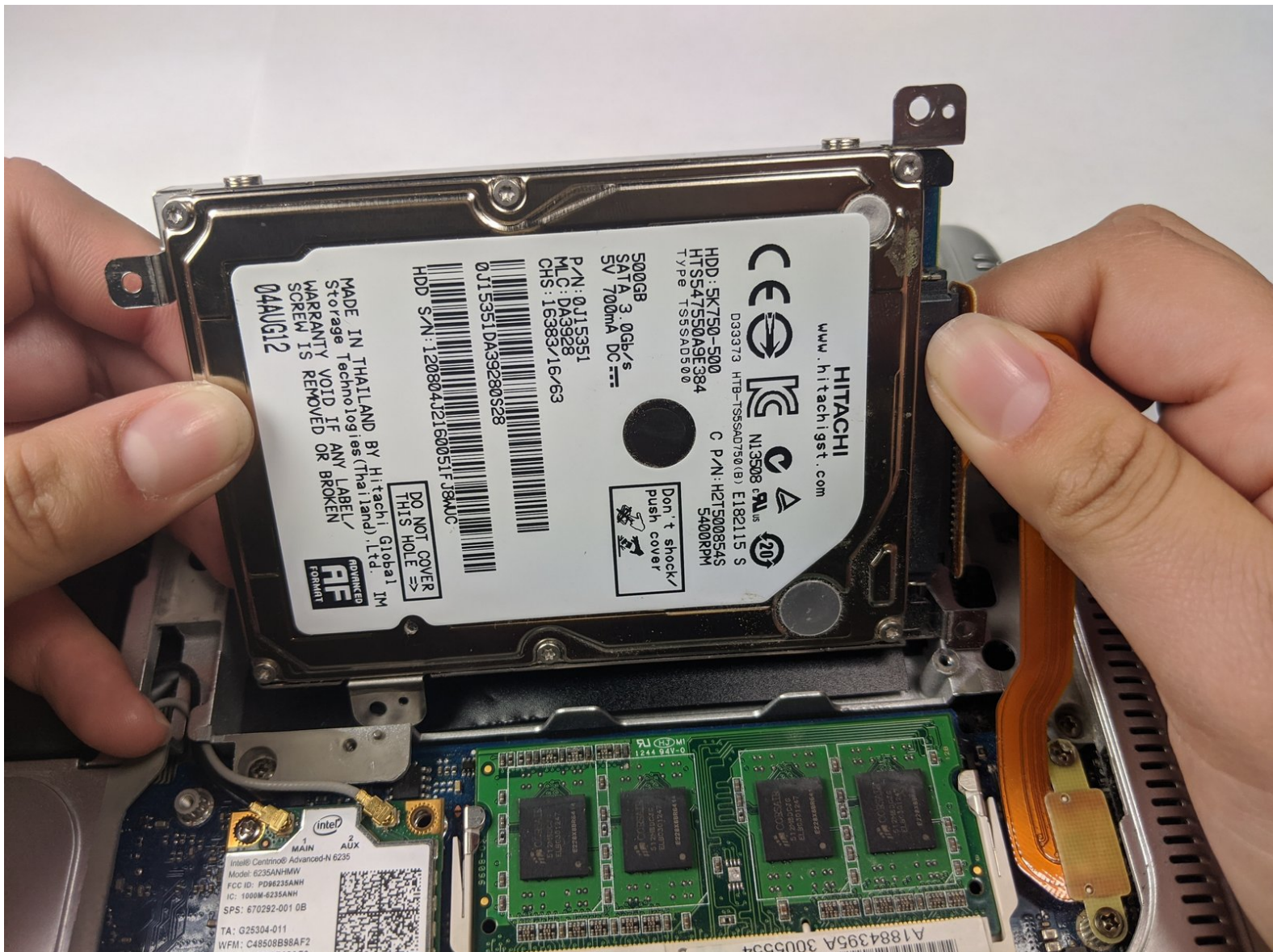




Sony Vaio SVS151190X Hard Drive Replacement

This guide shows how to replace a hard drive in...

Written By: Jacob Bellows



INTRODUCTION

This guide shows how to replace a hard drive in a Sony Vaio SVS151190X laptop. A hard drive replacement is needed when the device storage is full or nearly full. Your device may also have a faulty hard drive, due to old age or damage of some sort. If possible, clear your hard drive of junk files to free up space before purchasing or installing a new hard drive. You may also want to consider purchasing an external storage device before replacing your hard drive.



TOOLS:

- [Phillips #1 Screwdriver](#) (1)



PARTS:

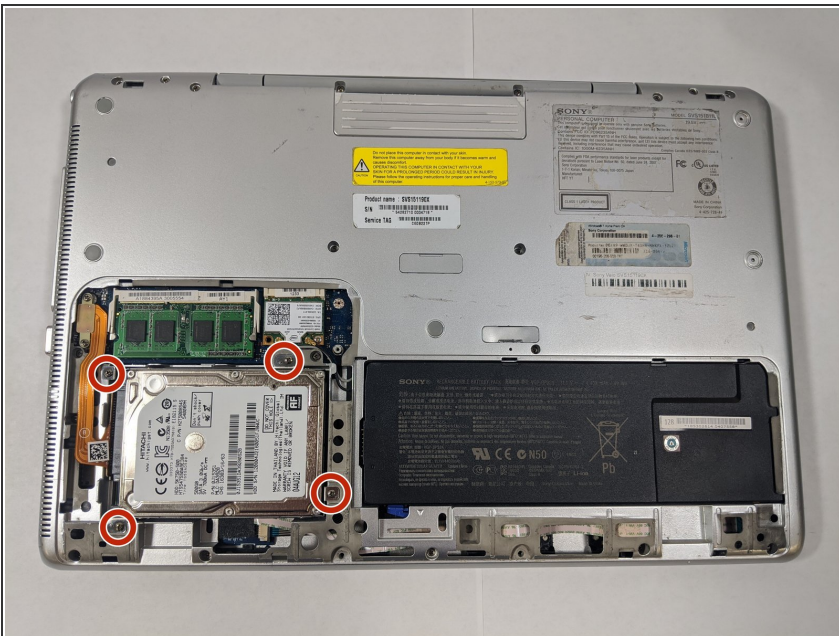
- [1 TB SSD](#) (1)
- [250 GB SSD](#) (1)
- [Crucial MX500 500 GB SSD](#) (1)
- [2 TB SSD](#) (1)

Step 1 — Hard Drive



- Using a #1 Phillips screwdriver, remove the two 5mm screws as directed.
- Slide off the back cover.
- ⓘ Ensure different sized screws are kept separate during disassembly.

Step 2



- Remove the four 3mm screws using the Phillips #1 screwdriver.

The image shows a Hitachi hard drive being removed from a laptop. The drive is a 500GB, 3.5-inch SATA 3.0 model. The label on the drive provides the following information:

- Hitachi Logo**
- www.hitachigst.com**
- Model:** HTS547550A9394
- Capacity:** 500GB
- Interface:** SATA 3.0
- Cache:** 8MB
- Part Number:** P/N 0115351
- Serial Number:** C/S 1638316/63
- Barcode:** 0115351043230325
- Dimensions:** 50mm x 70mm x 12mm
- Warning:** DO NOT TOUCH SURFACE
- Instructions:** Don't shake / Push cover / 不要搖晃 / 請勿推蓋
- Origin:** MADE IN THAILAND by Hitachi Global Storage
- Condition:** VOID IF ANY LABEL / WRAPPER IS REMOVED OR OPENED
- Part Number:** 0440612
- Barcode:** 0440612
- Warning:** DO NOT COVER THIS HOLE
- Logo:** RoHS Compliant

The laptop's internal components, including the motherboard, RAM, and other hardware, are visible below the drive.

- Lift out the hard drive and unplug the orange ribbon wire.

To reassemble your device, follow these instructions in reverse order.