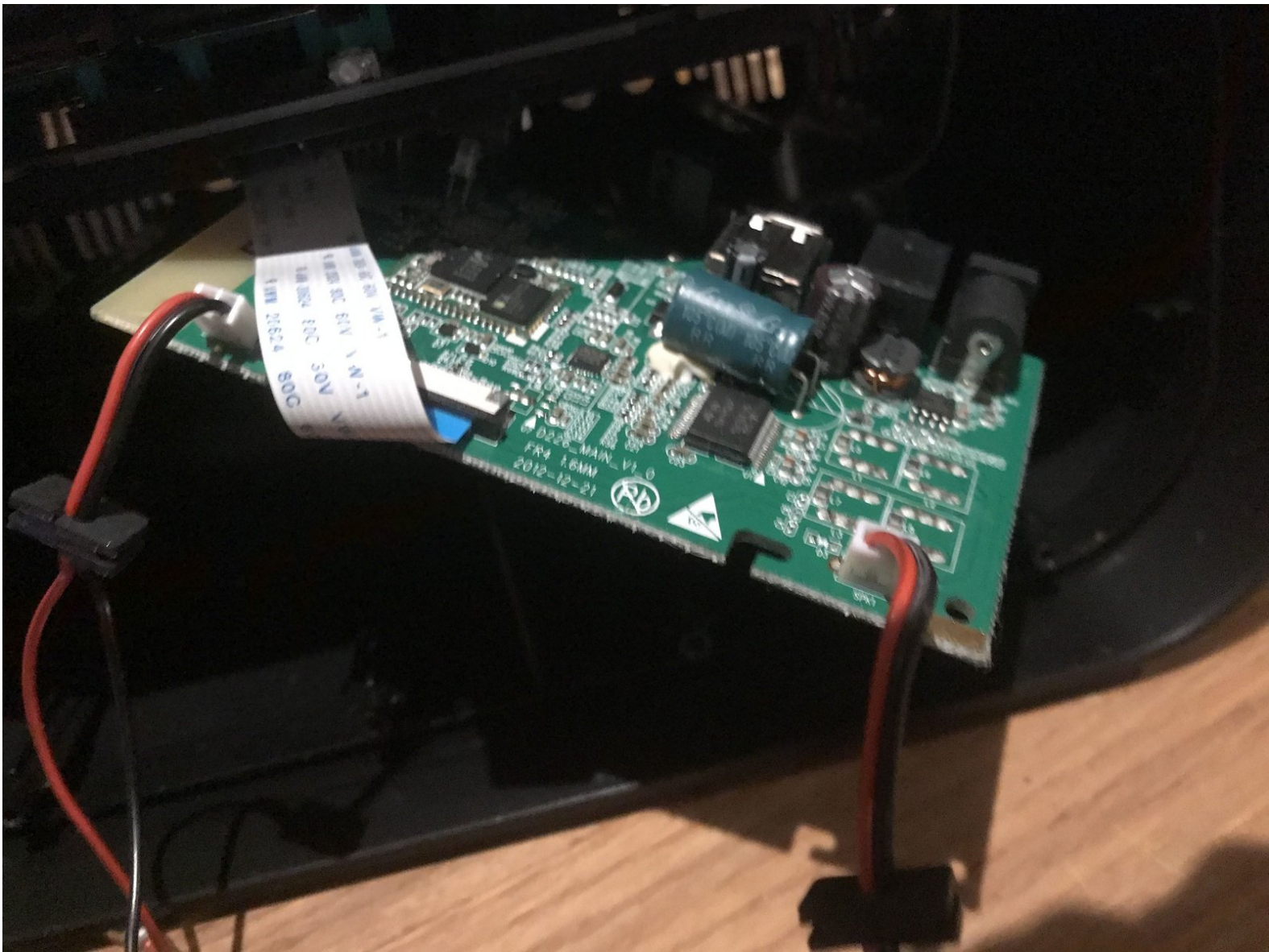




iHome iBT25 Motherboard Replacement

Replacement of the motherboard on this machine.

Written By: Levi G





TOOLS:

- [Phillips #2 Screwdriver](#) (1)
-

Step 1 — Motherboard



- Remove the grille with your hands
- Remove all the rubber inserts still left on the speaker side. If any are on the grill side, you can ignore them.

Step 2



- Remove the screws surrounding both speakers.

Step 3



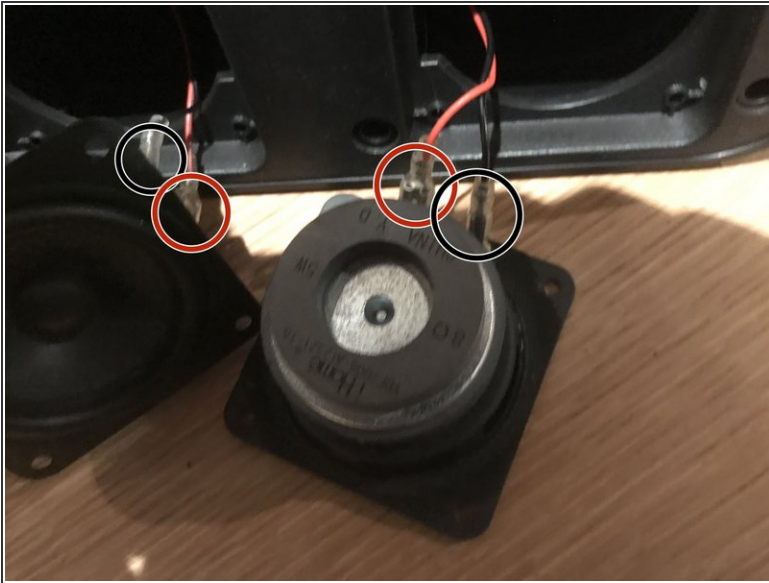
- Remove these 3 screws, which were below the rubber inserts you removed earlier.

Step 4



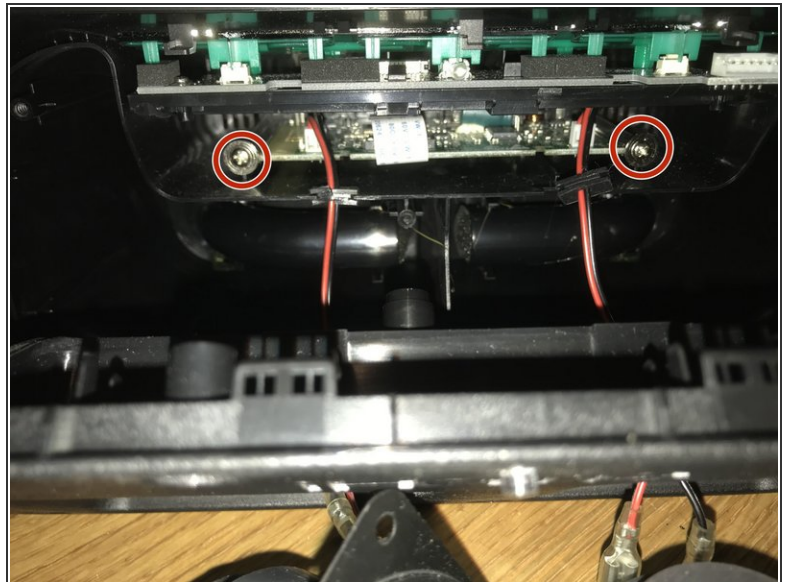
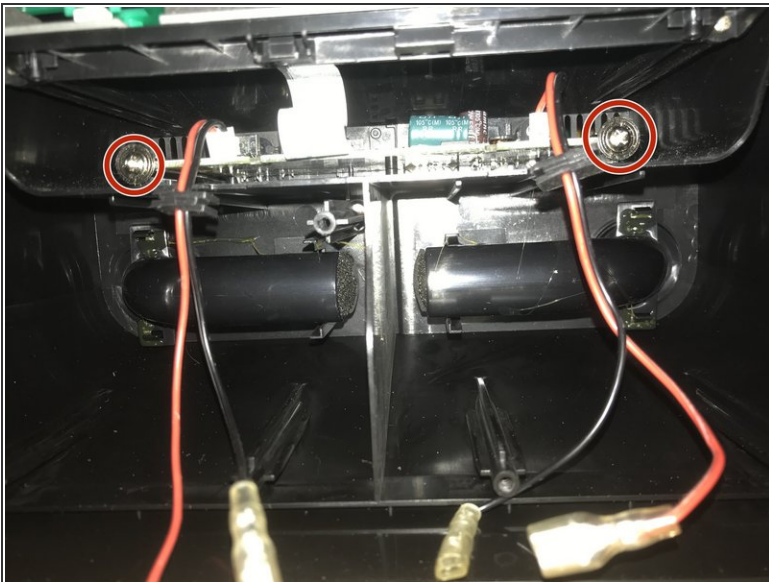
- The face plate and both speakers can now be separated from the body of the device.
- The speakers are still connected by wires.

Step 5



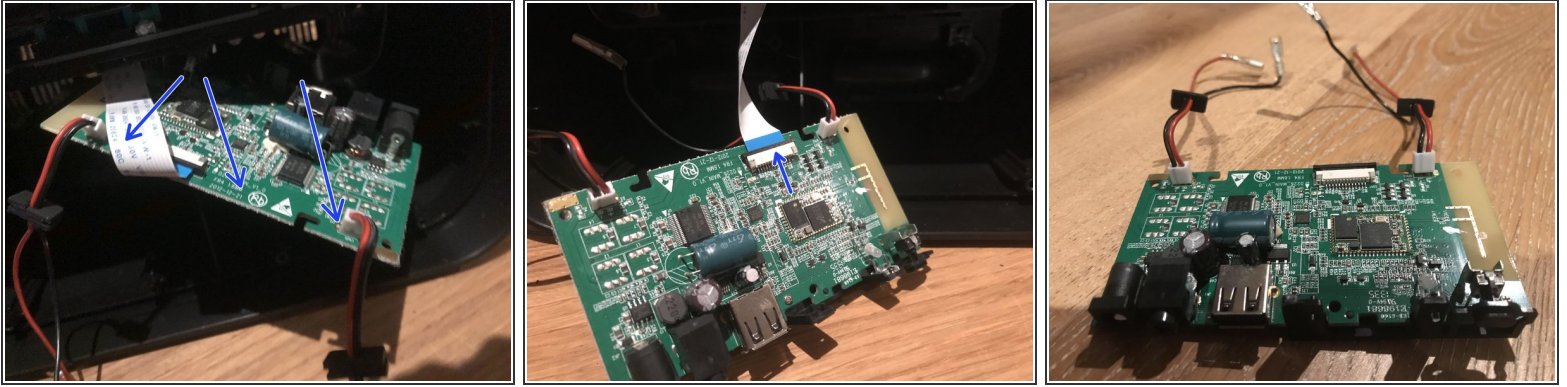
- Remove the wires, which have different sockets, so they can't be mixed up.

Step 6



- With all the speakers and the faceplate removed, you can focus on the motherboard.
- Remove the 2 indicated screws.

Step 7



- Firmly but carefully pull out the motherboard. Before you remove it completely, disconnect the ribbon cable.
 - **DO NOT BREAK THE RIBBON CABLE**
- You can now remove the board.

Step 8



- Great job! To reassemble, follow these steps in reverse order, and make sure you reattach the ribbon cable with the light blue square facing up.

To reassemble your device, follow these instructions in reverse order. (and attach the ribbon cable!)