



iHome iBT25 Speaker Replacement

Replace one or both speakers.

Written By: Levi G





TOOLS:

- [Phillips #2 Screwdriver](#) (1)
-

Step 1 — Exterior



- Unplug the device and remove the front grille with your hands.

Step 2



- You can use this guide to replace either one, or both speakers.

Step 3



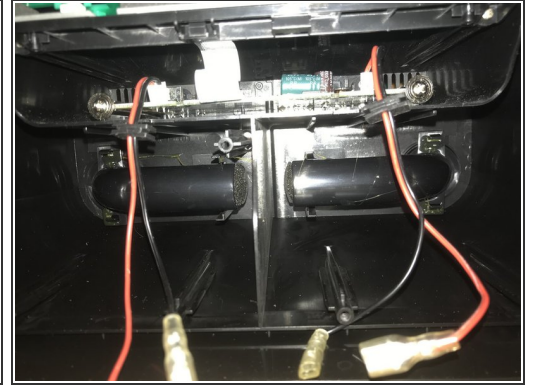
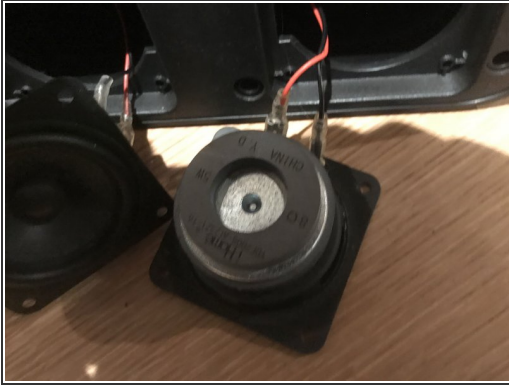
- Remove the 4 screws surrounding the speaker you want to remove with a phillips head screwdriver
- All the screws are the same size

Step 4



- The speaker can now be pulled out or removed by tilting the device.

Step 5



- The speakers use color coded wires, which don't fit into the wrong side, so you can't get the sides mixed up.
- To remove a wire, grip it where the wire part meets the metal beneath the plastic protector (which is not necessary to remove)
- pull away from the connector. The black socket is narrower than the red socket.

Step 6 — That's it!



- That's it! Great job!
- You saved money by doing it yourself, using only a Phillips-head screwdriver!

To reassemble your device, follow these instructions in reverse order.