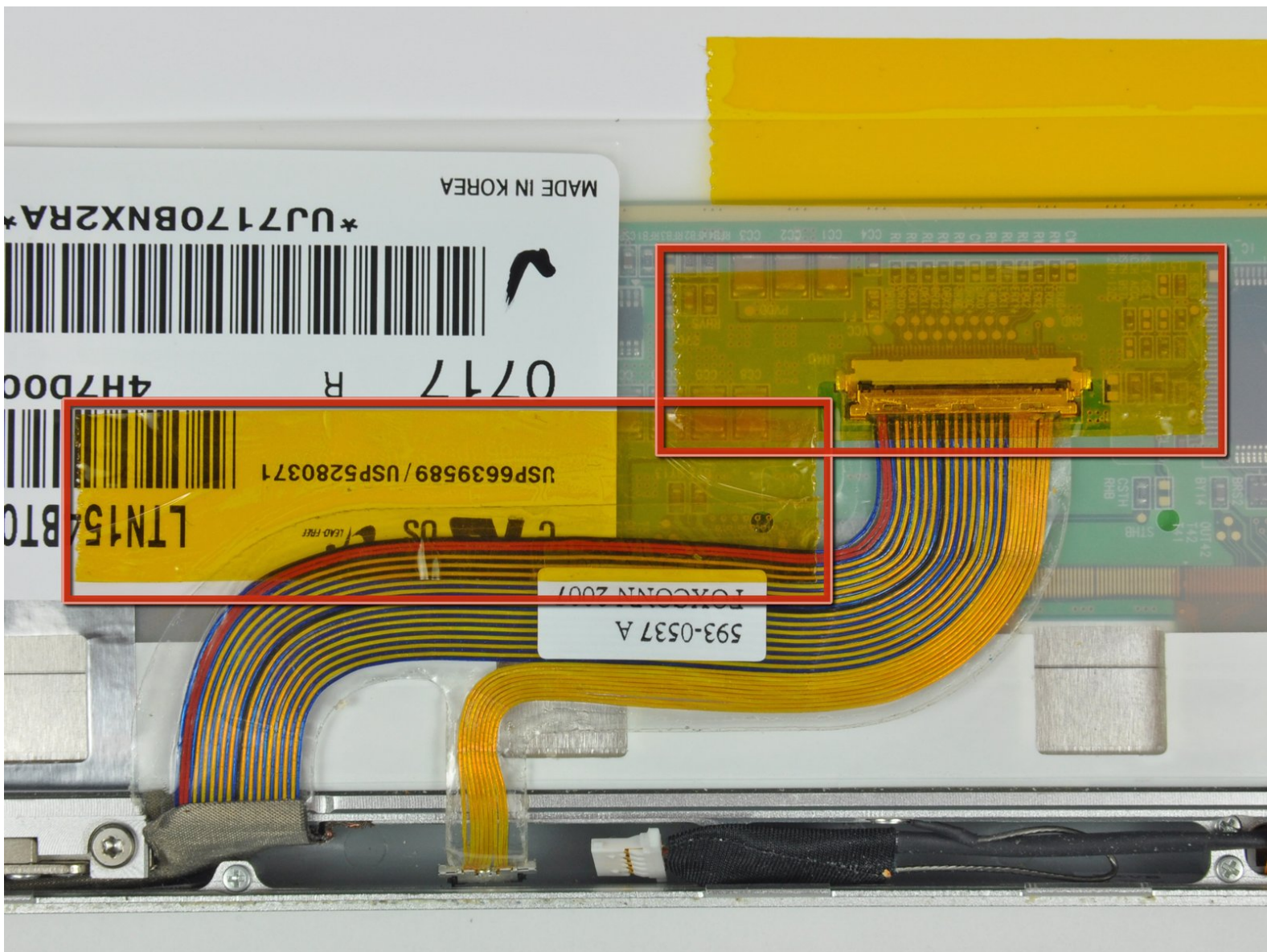




MacBook Pro 15" Core 2 Duo Models A1226 and A1260 Clutch Assembly Replacement

Written By: Walter Galan



INTRODUCTION

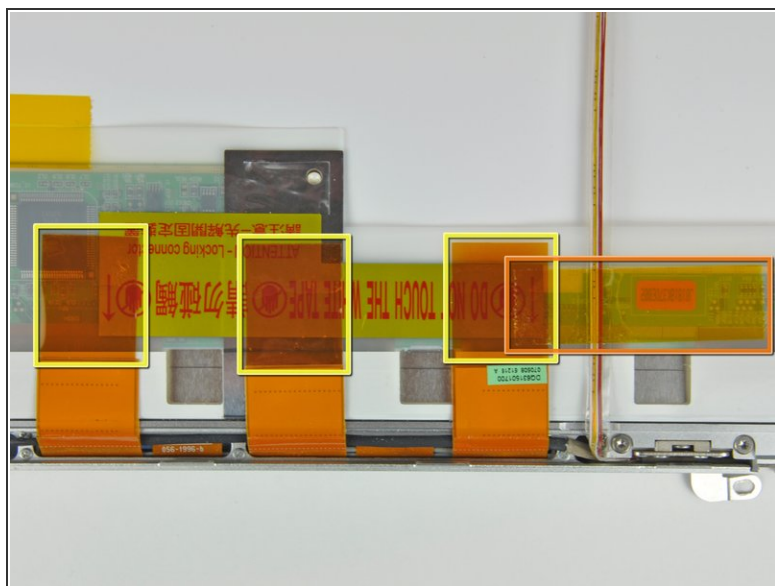
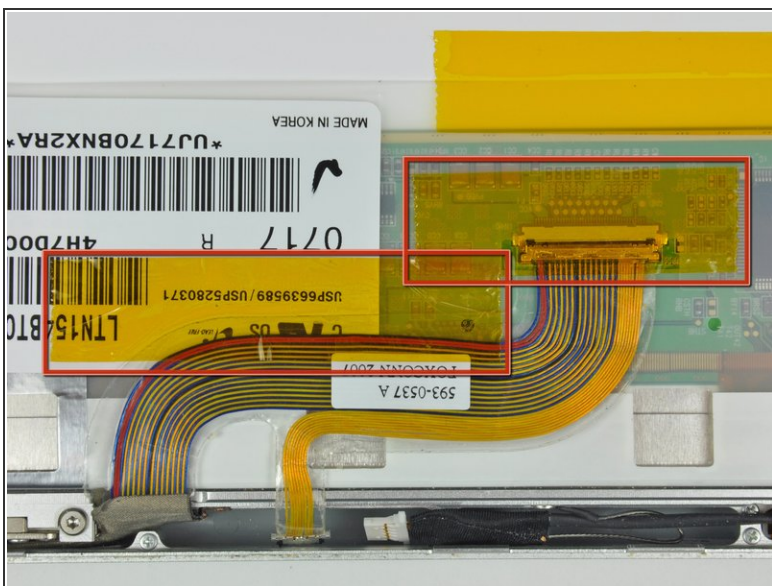
This is an internal private guide used for prereqs.



TOOLS:

- [Phillips #00 Screwdriver](#) (1)
 - [iFixit Opening Tools](#) (1)
 - [Spudger](#) (1)
-

Step 1 — Clutch Assembly



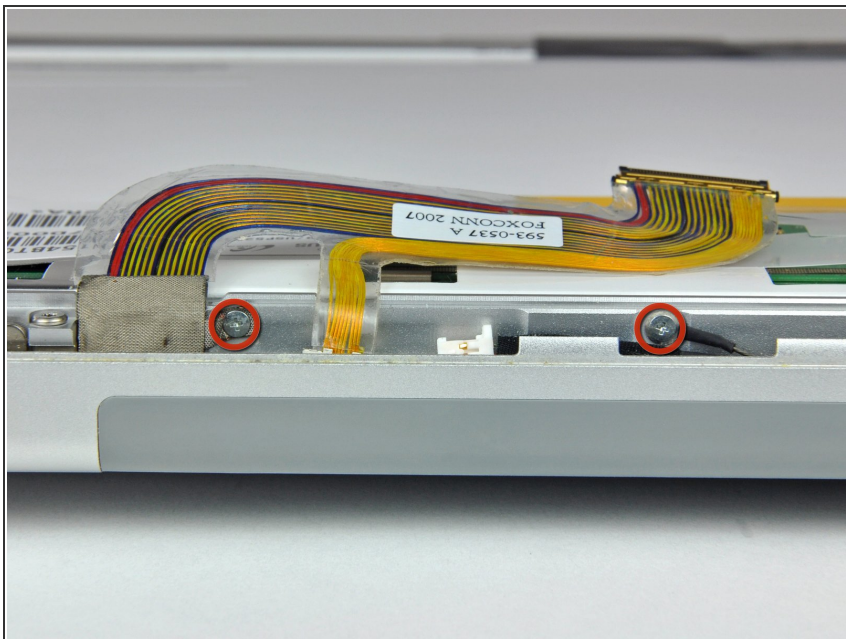
- Remove the two pieces of kapton tape covering the display data cable.
- Remove the strip of tape securing the iSight cable to the LCD.
- Peel the three antenna straps off the lower edge of the LCD.

Step 2



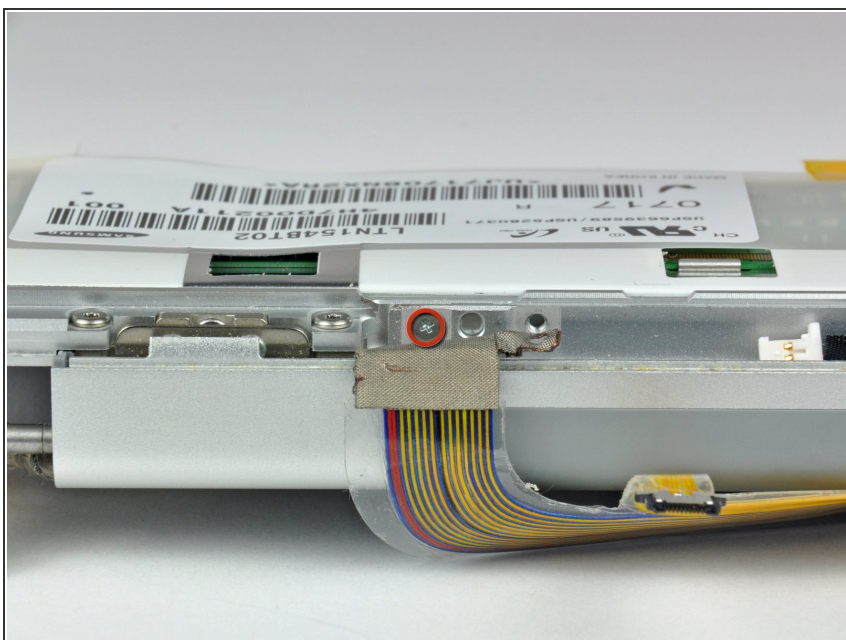
- Disconnect the display data cable by pulling its connector toward the bottom edge of the display, away from the socket on the LCD.

Step 3



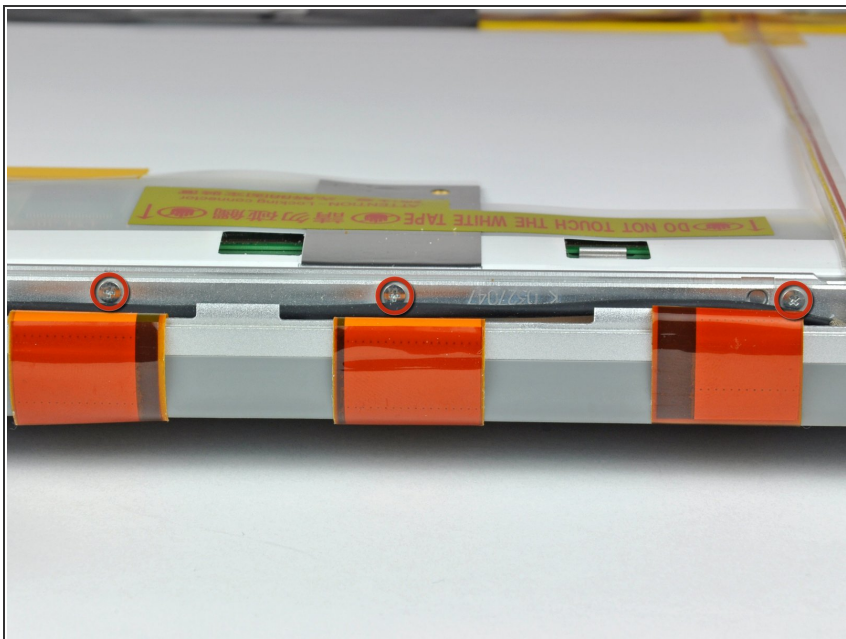
- Remove the two Phillips screws securing the ground straps for the display data cable and LED driver board cable to the clutch cover.

Step 4



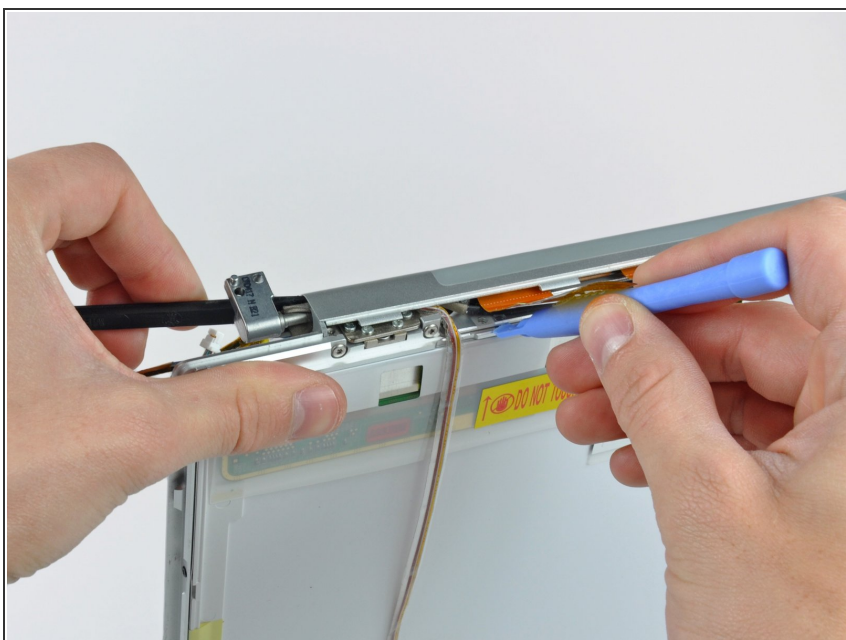
- Remove the Phillips screw hidden behind the display data cable.

Step 5



- Remove the three Phillips screws behind antenna straps along the bottom edge of the display.

Step 6

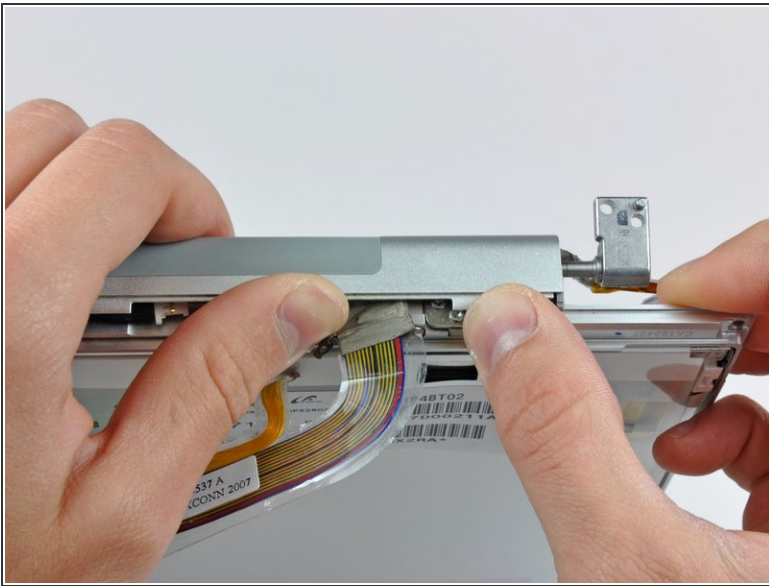


- To remove the clutch assembly, first insert the flat end of a spudger into the gap between the clutch hinge

and the clutch cover where the cables exit.

- While prying the clutch assembly away from the clutch hinge with your spudger, use a plastic opening tool to increase the gap between the clutch cover and the front display bezel.
- Work your way along the length of the clutch cover to fully separate the adhesive.

Step 7



- Push the clutch assembly off each of the clutch hinges and remove it from the display.

To reassemble your device, follow these instructions in reverse order.