

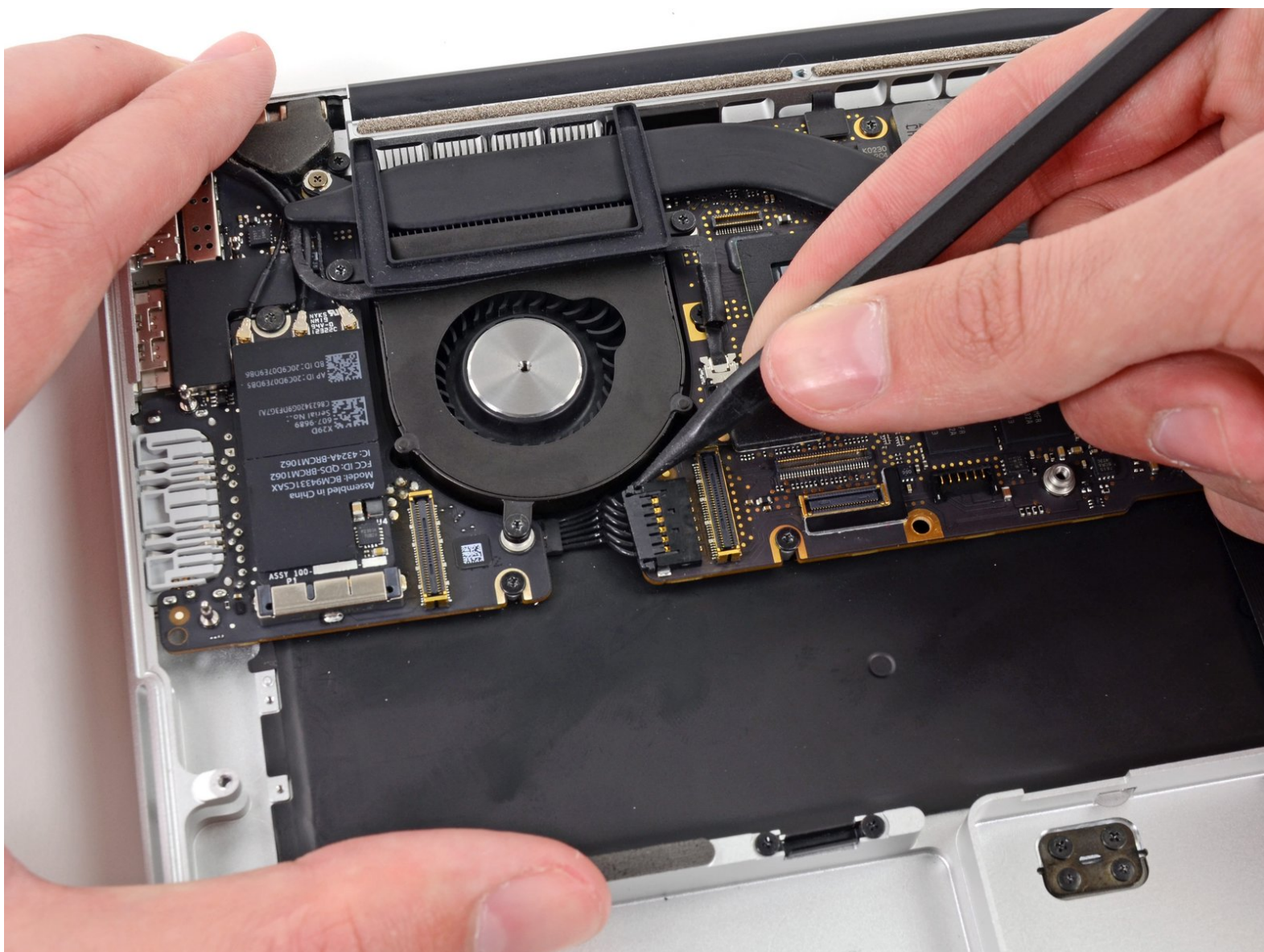


# MacBook Pro 13" Retina Display Late 2012

## Logic Board Assembly Replacement

Prereq only, no battery.

Written By: Walter Galan



---

# INTRODUCTION

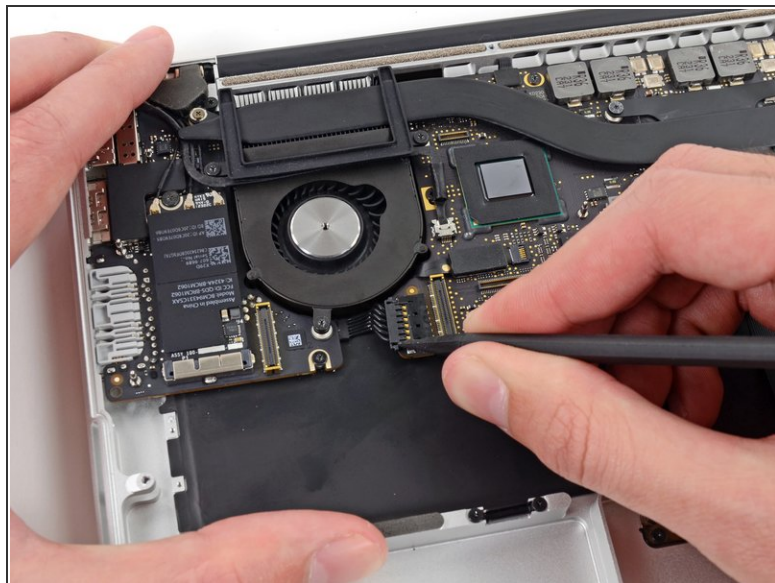
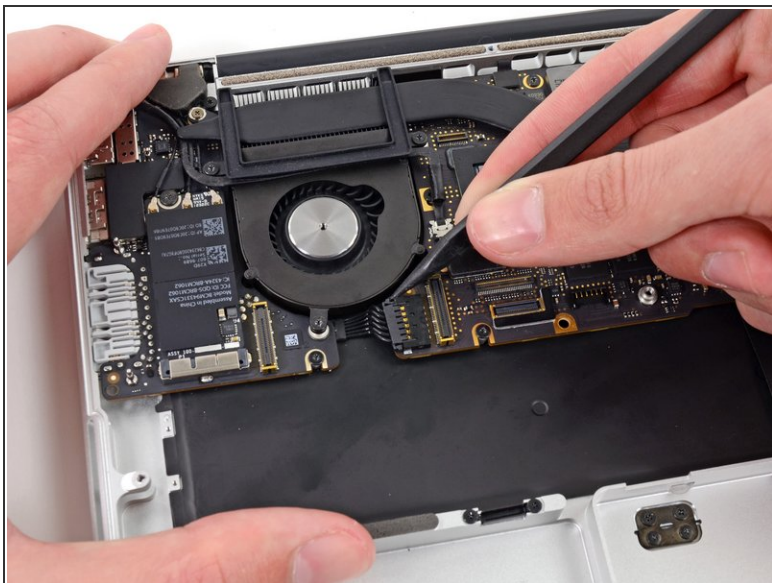
Prereq for upper case, battery removed.



## TOOLS:

- [Spudger](#) (1)
  - [T5 Torx Screwdriver](#) (1)
-

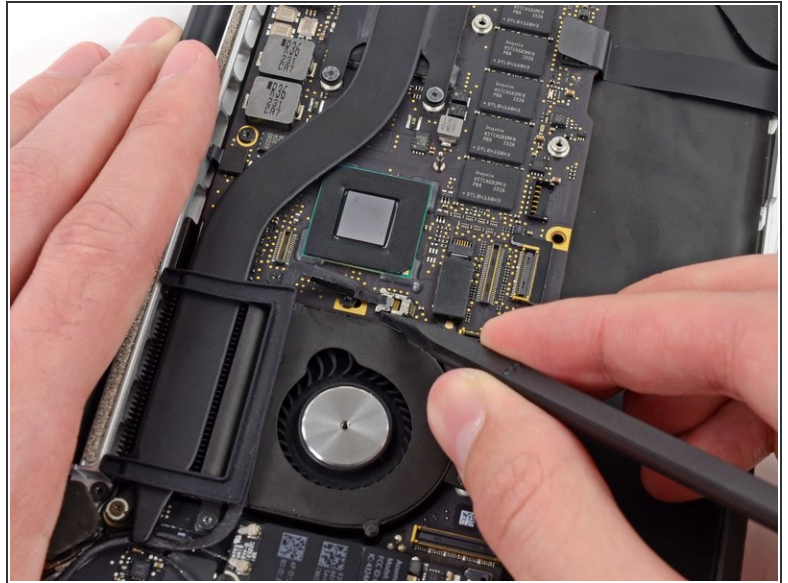
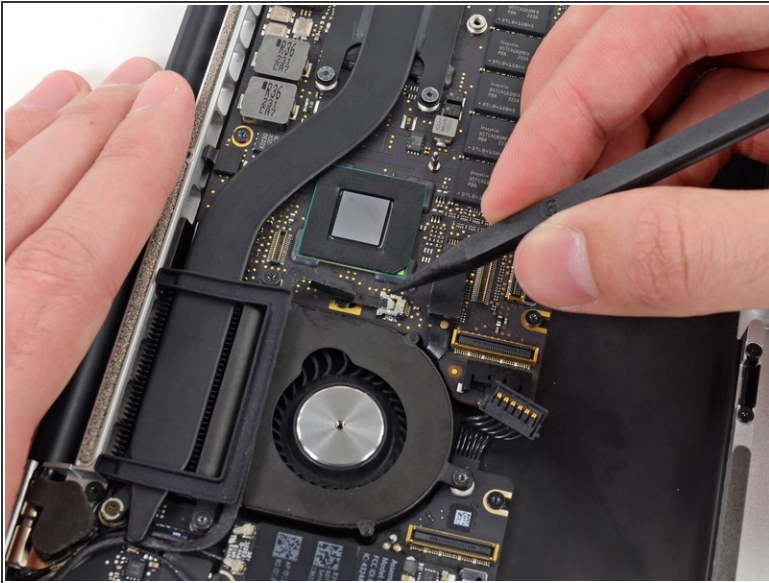
## Step 1 — Logic Board Assembly



- Use the tip of a spudger to push the edges of the I/O board connector straight out of its socket on the logic board.
- ⓘ It is recommended to carefully push on both sides of the connector to "walk" it out of its socket.



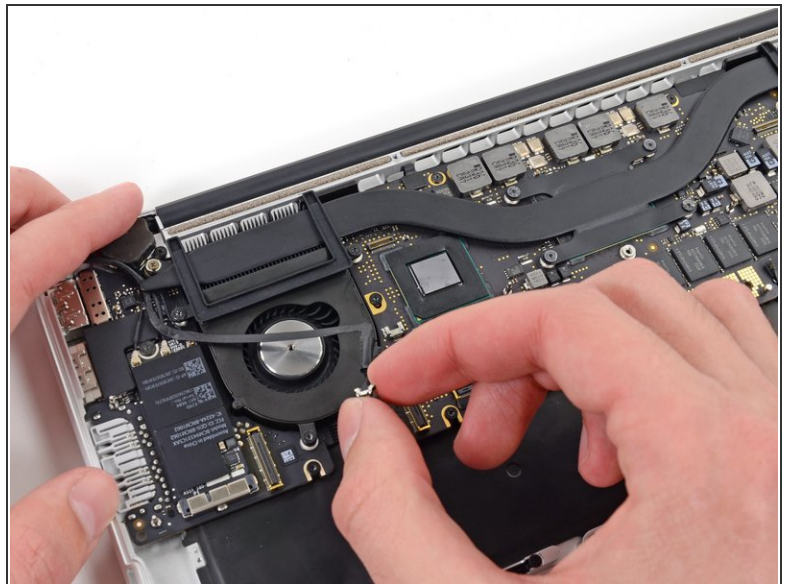
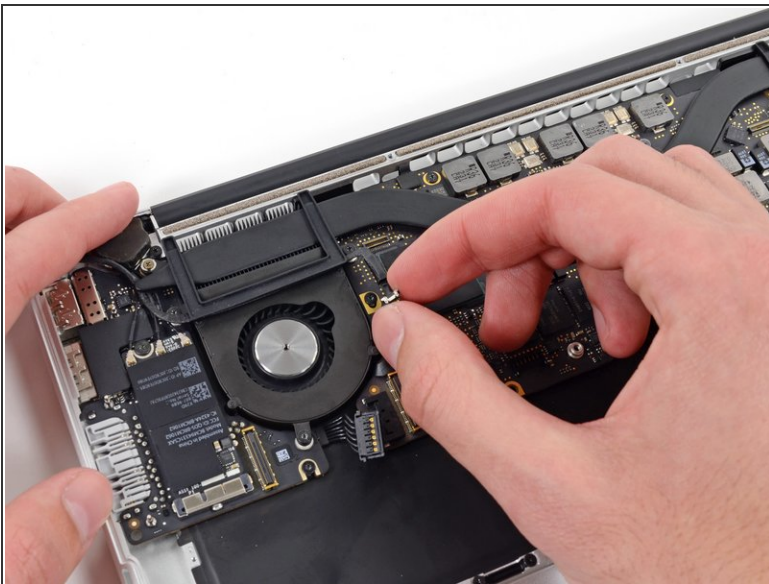
## Step 2



- Use the tip of a spudger to push the iSight camera cable connector straight away from its socket on the logic board.

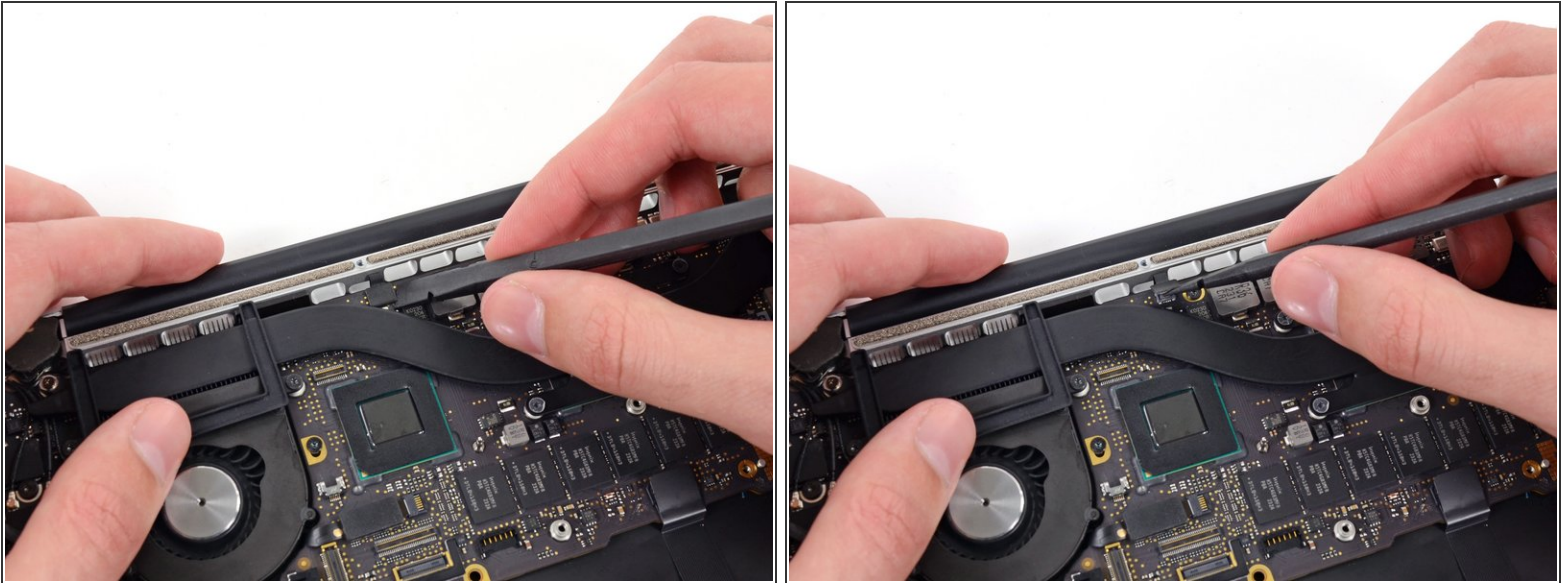
**i** It is recommended to carefully push on both sides of the connector to "walk" it out of its socket.

## Step 3



- Move the iSight camera cable aside.

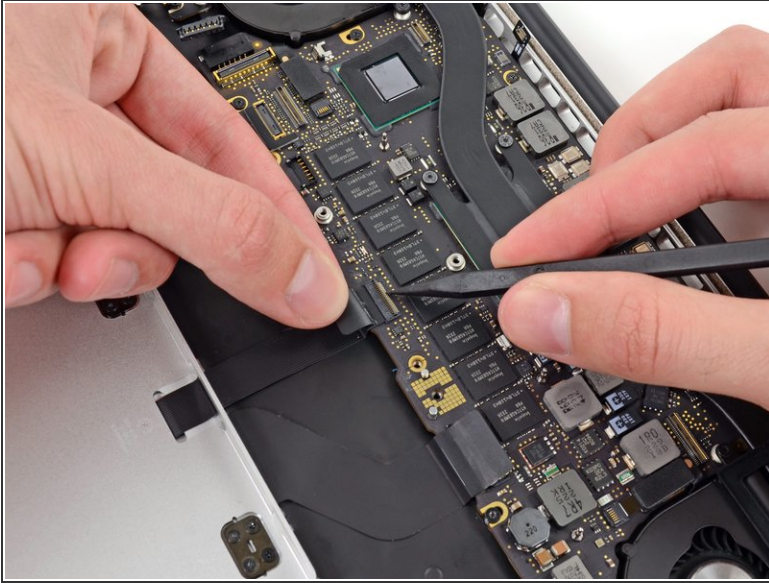
## Step 4



- Wedge the flat end of a spudger underneath the keyboard backlight connector and the logic board.
- Gently twist the flat end of a spudger upwards to pry the keyboard backlight connector up off its socket on the logic board.



## Step 5

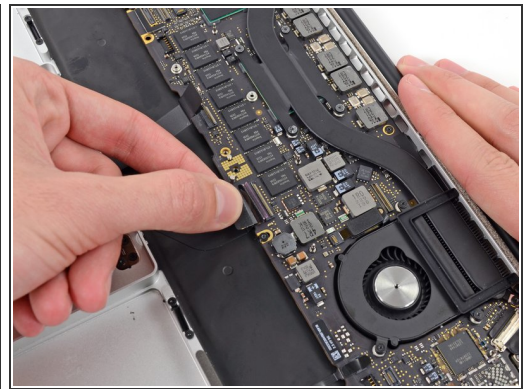
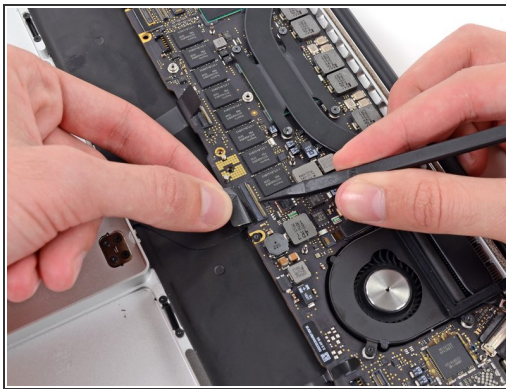
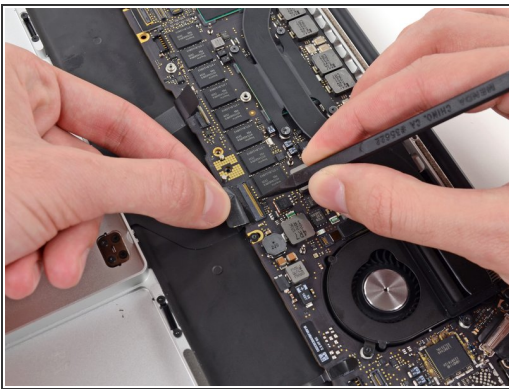


- Use the tip of a spudger to flip up the retaining flap on the trackpad ribbon cable ZIF socket.

⚠ Be sure you are prying up on the hinged retaining flap, **not** the socket itself.

- Grasp the plastic pull tab and pull the trackpad ribbon cable out of its socket.

## Step 6



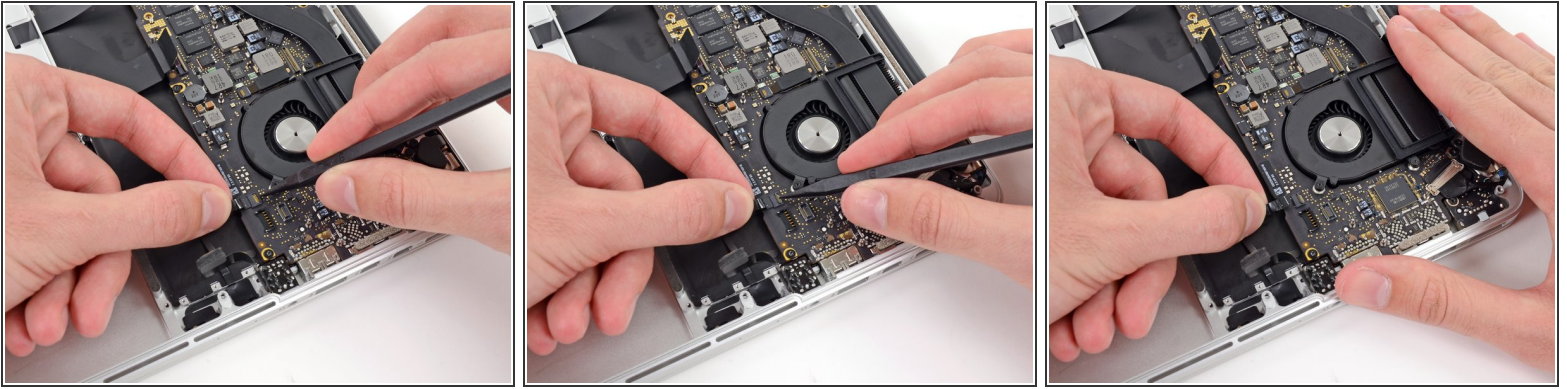
- Use the tip of a spudger to flip up the retaining flap on the keyboard ribbon cable ZIF socket.

⚠ Be sure you are prying up on the hinged retaining flap, **not** the socket itself.

- Grasp the plastic pull tab and pull the keyboard ribbon cable out of its socket.



## Step 7



- Use the tip of a spudger to flip up the retaining flap on the microphone ribbon cable ZIF socket.

⚠ Be sure you are prying up on the hinged retaining flap, **not** the socket itself.

- Grasp the plastic pull tab and pull the microphone ribbon cable out of its socket.

## Step 8



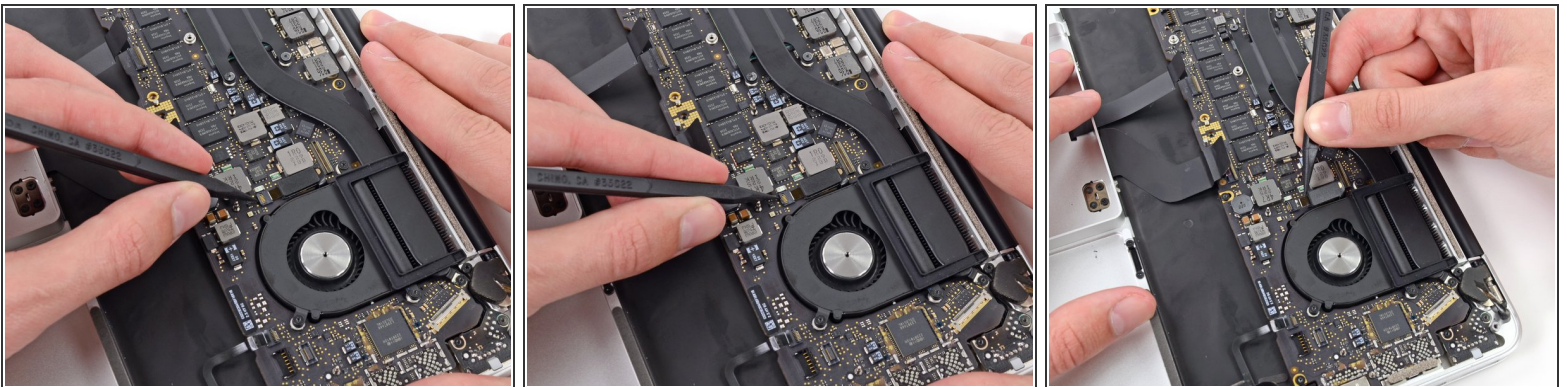
- Use the tip of a spudger to rotate the pull tab secured to the display data cable lock toward the DC-In side of the computer.

## Step 9



- Gently push the edges of the display data cable connector away from its socket on the logic board.
- ⓘ It is recommended "walk" the connector out of its socket. Simply push the top and bottom corners of the connector and carefully "walk it out" of its socket.
- Pull, but do not remove, the display data cable connector out of its socket and carefully move it out of the way.

## Step 10



- Use the tip of a spudger to flip up the retaining flap on the left fan ribbon cable ZIF socket.
- ⚠ Be sure you are prying up on the hinged retaining flap, **not** the socket itself.
- Carefully pull the left fan ribbon cable out of its socket.

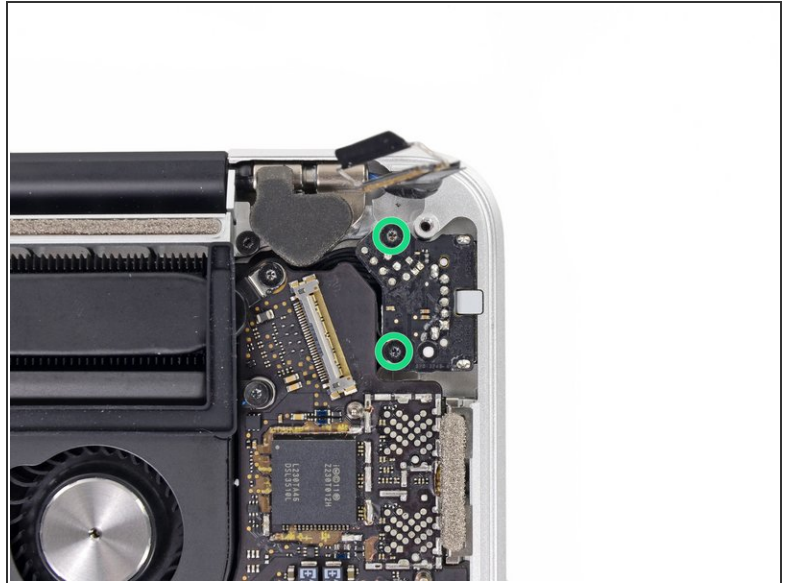
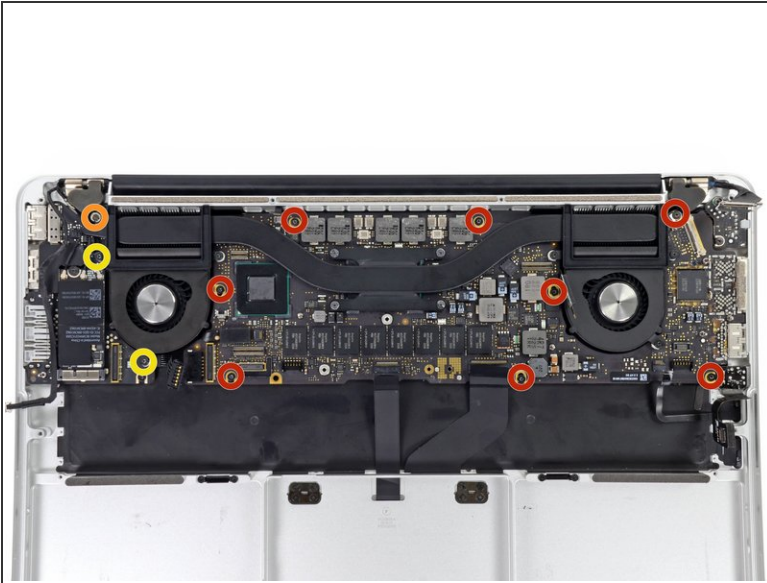


## Step 11



- Move the left fan ribbon cable aside to reveal a hidden screw securing the logic board assembly to the upper case.

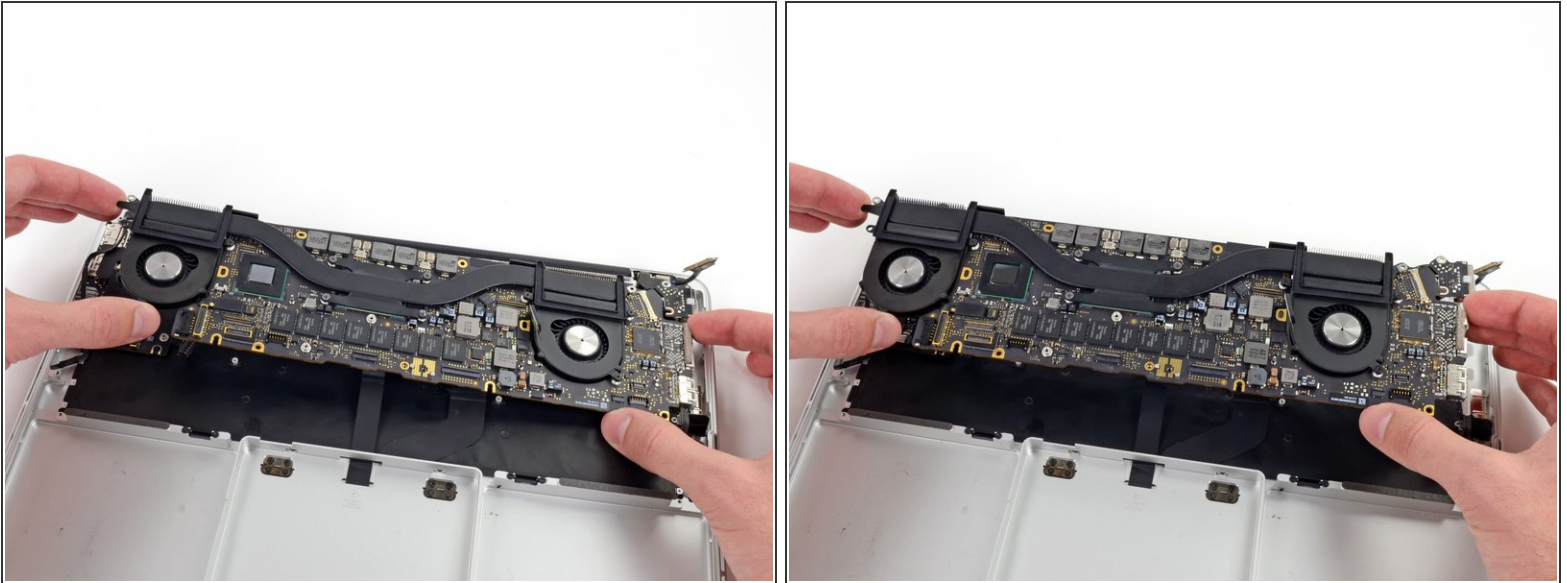
## Step 12



- Remove the following screws securing the logic board to the upper case:
  - Eight 3.3 mm T5 Torx screws
  - One Phillips #00 screw
  - Two 3.1 mm T5 Torx screws
- Remove two more screws, from the MagSafe DC-In board in the upper right corner (second image).
  - Two 3.4 mm T5 Torx screws



## Step 13



- Carefully lift the logic board assembly from its left side and work it out of the upper case, minding any cables and the I/O ports that may get caught during removal.
- Pull the right I/O port side of the logic board away from the side of the upper case and remove the logic board assembly.

To reassemble your device, follow these instructions in reverse order.