



# Motorola Moto G7 Battery Replacement

The Motorola Moto G7 features a 3000 mAh Li-Ion...

Written By: Saba Jafroodi



# INTRODUCTION

The Motorola Moto G7 features a 3000 mAh Li-Ion battery. If a user has had the phone for a long period of time (over a year) and the phone is losing its charge at a much faster rate, the battery may need to be replaced. Use this guide to remove the Motorola G7 battery.

Before you begin, download the [Rescue and Smart Assistant](#) app to backup your device and diagnose whether your problem is software or hardware related.

The specific model is XT1962-1 but the other models XT1962-4 and XT1962-5 can be used with this guide.

Before beginning the repair, make sure the device is turned off and disconnected from an external power source. Gather the suggested tools listed below and if you'd like to replace the battery, a new Motorola G7 battery.



## TOOLS:

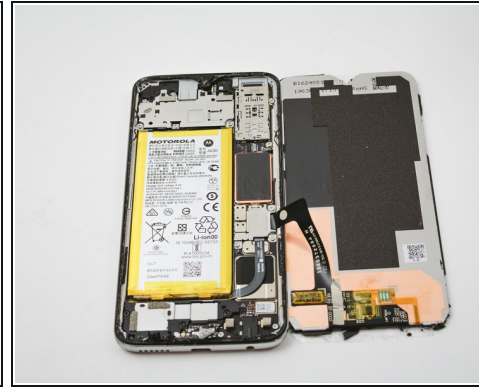
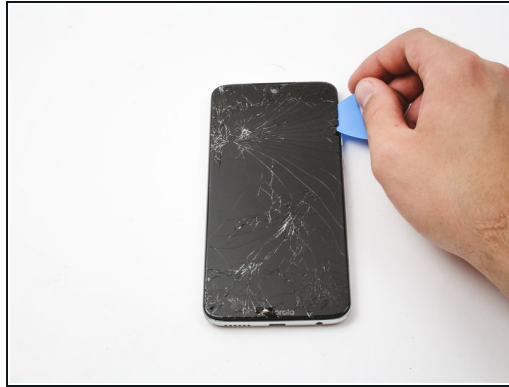
[T3 Torx Screwdriver](#) (1)  
[SIM Card Eject Tool](#) (1)  
[Spudger](#) (1)  
[iFixit Opening Tool](#) (1)  
[iOpener](#) (1)  
[Heat Gun](#) (1)  
[iFixit Opening Picks \(Set of 6\)](#) (1)



## PARTS:

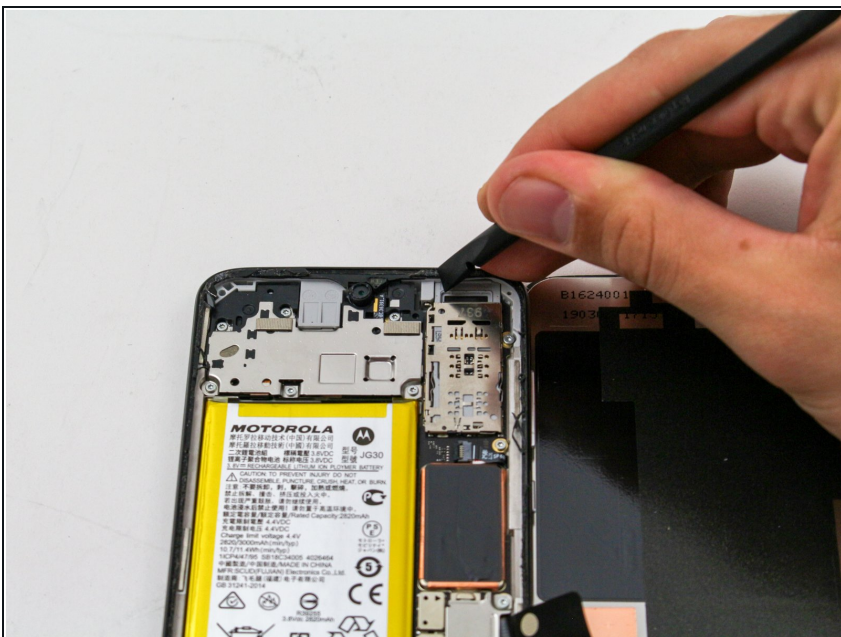
[Moto G7 Battery - Genuine](#) (1)

## Step 1 — Screen



- Use the iFixit opening tools to gently wedge the front screen from the rest of the device.
- ① Try to focus on the corners to make it easier to insert and use the iFixit opening picks.
- ① It is also recommended to use the iOpener or a heat gun to weaken the adhesive that holds the edges of the screen down.
- ⚠ The screen is glass, so when using force to lift the screen, be cautious of cracked glass and stray shards of glass coming off.
- ⚠ You have to be extra careful to dig deep enough, so you lift the entire screen unit!

## Step 2



- Excessive glass and adhesive around the edges should be removed with the spudger.
- ⚠ The glass is black and may blend in with edges of the device. Be cautious using bare hands when moving the device.

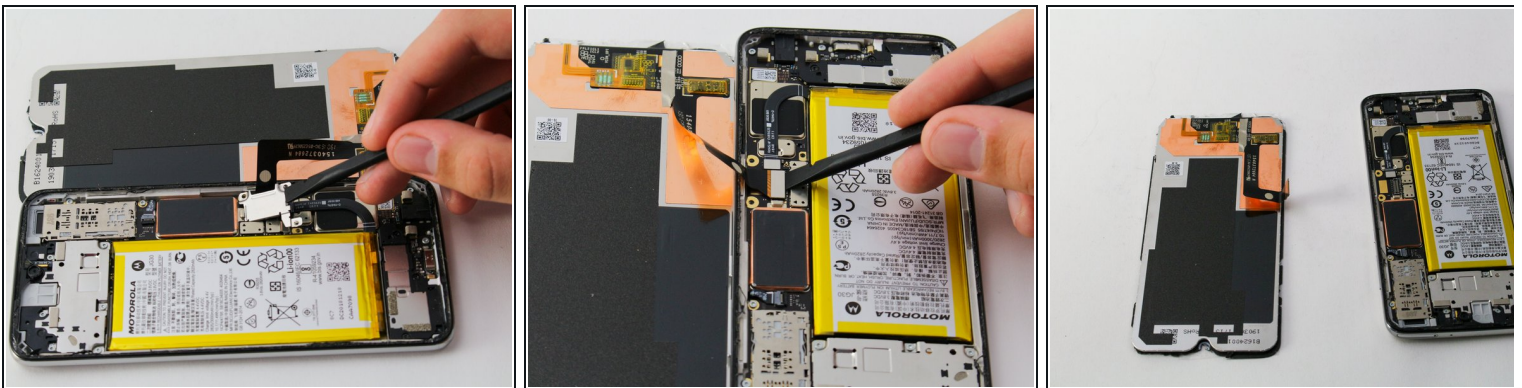


### Step 3



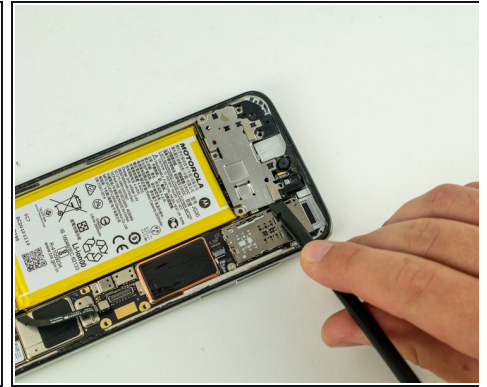
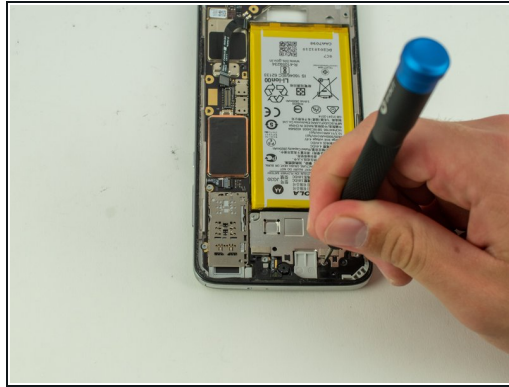
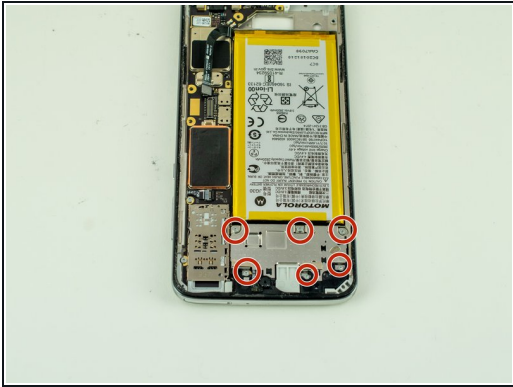
- Remove three 2.7mm T3 Torx screws from the metal piece to the right of the battery.

### Step 4



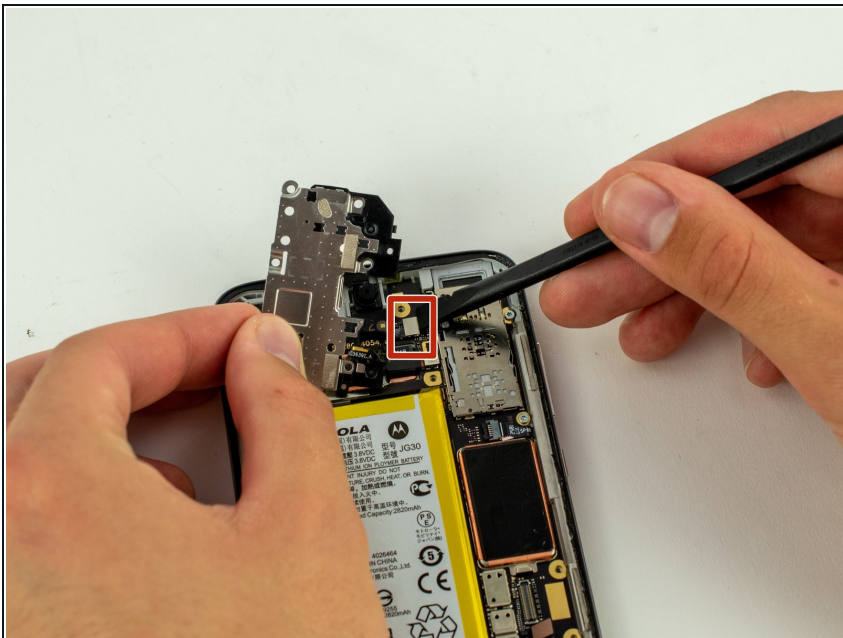
- Use a spudger to gently take off the metal piece that was held down by the screws.
- A second metal piece is held under the first. This can also be popped off by using the spudger and nudging it under the metal piece connected to the band.

## Step 5 — Camera



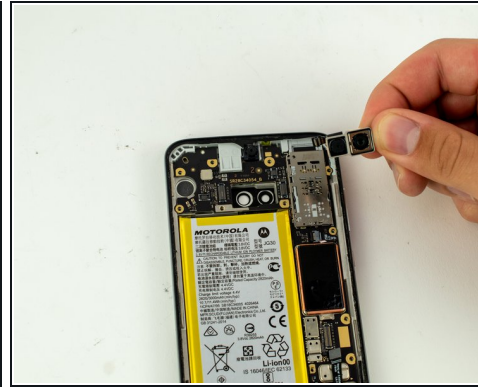
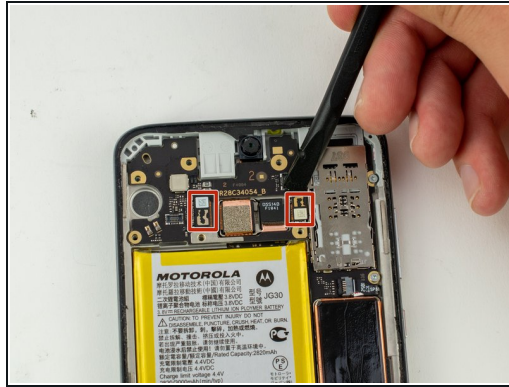
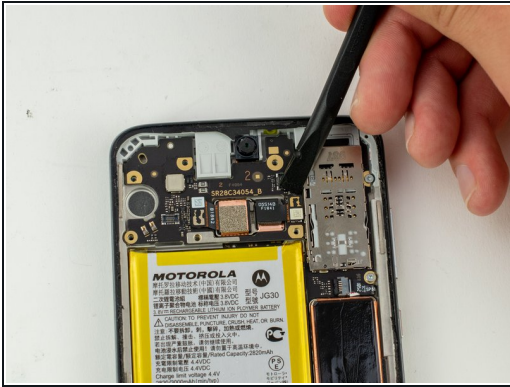
- Remove by the six 2.7mm T3 Torx screws from the metal panel above the battery.
- Wedge a spudger between the SD card tray and the metal plate, and use a medium amount of force to pry up the plate.

## Step 6



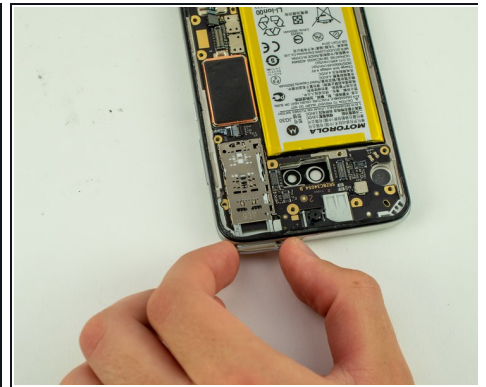
- Use a spudger beneath the right side of the connector to detach it.

## Step 7



- Detach the two small black and white connectors on either side of the camera using a spudger.
- Remove the camera from the smartphone.

## Step 8 — Motherboard



- Use the SIM card removal bit to remove the SIM card tray.

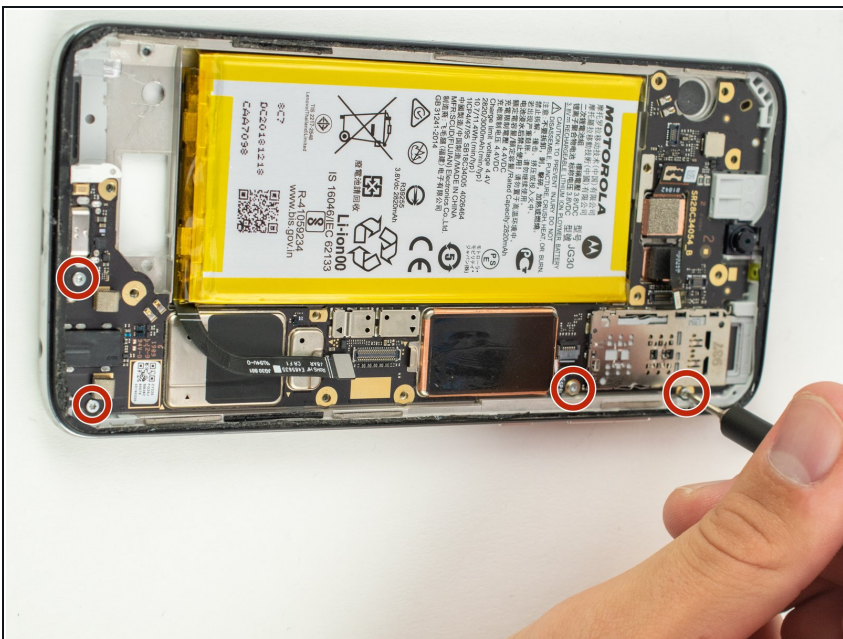


## Step 9



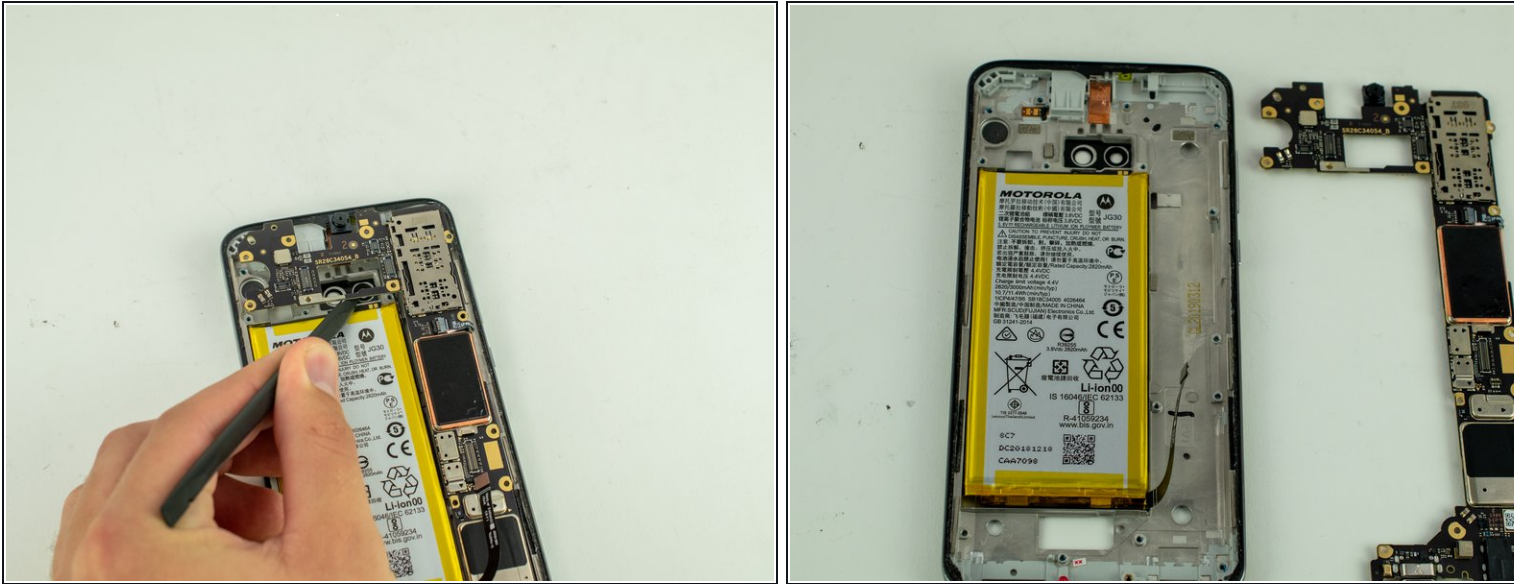
- Remove the fingerprint scanner connector from the motherboard by levering the spudger underneath the connector corner.

## Step 10



- Use a T3 Torx screwdriver to remove the four 2.3mm screws from the bottom and right sides of the phone.

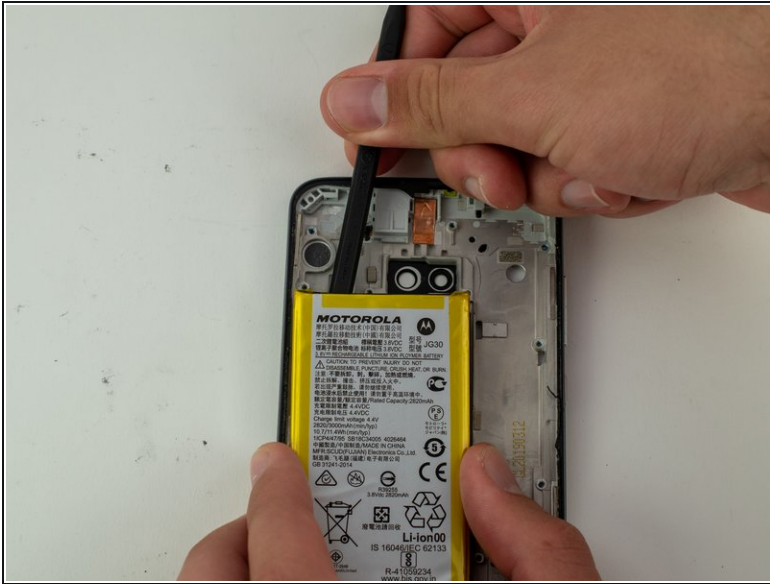
## Step 11



- Lever the spudger underneath the motherboard above the battery.
- Use a medium amount of force to remove the motherboard from the rest of the phone assembly.



## Step 12 — Battery



- Pry the battery out of the case using a spudger beneath the top of the battery.
- ❗ You can place an iOpener on the opposite side of the phone to apply indirect heat to loosen the battery's adhesive.
- ⚠ Do not use metal tools for this part because the battery can be punctured and can potentially catch fire.

To reassemble your device, follow these instructions in reverse order.