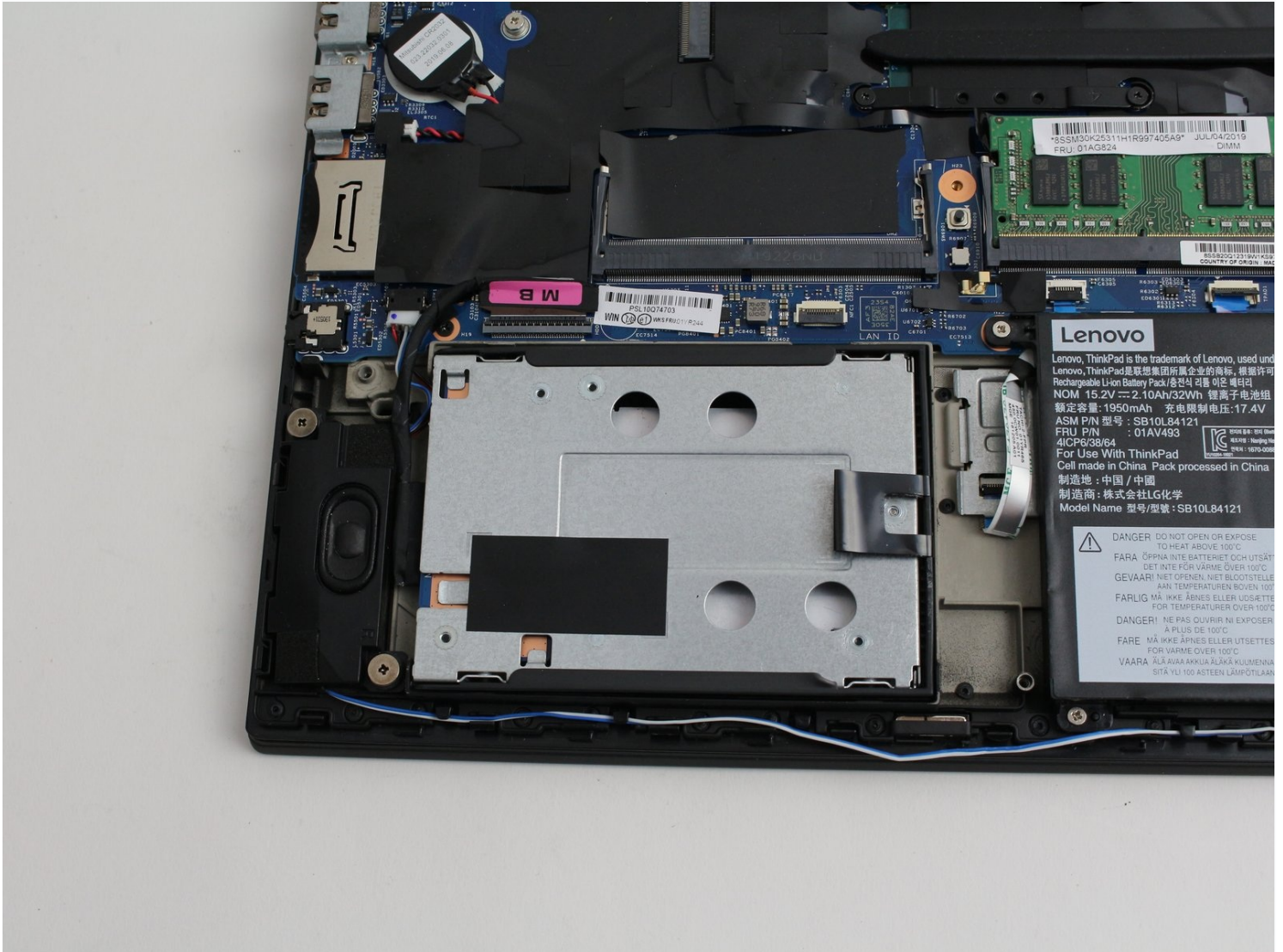




# Lenovo ThinkPad T580 Hard Drive Replacement

Welcome to the hard drive replacement guide for...

Written By: Ben Elkayam



# INTRODUCTION

Welcome to the hard drive replacement guide for the Lenovo Thinkpad T580.

This guide will detail the steps necessary to replace the hard drive.

The most common reasons why this component would need to be replaced is because:

- Your hard drive is full
- Your BIOS indicates your hard drive is damaged

If you are not experiencing these problems with this component consider examining the [troubleshooting page for this device](#).

There are no specialized skills required for replacing the hard drive.

---

## TOOLS:

Jimmy (1)  
Phillips #00 Screwdriver (1)  
Spudger (1)

## PARTS:

1 TB SSD (1)

---

## Step 1 — External Battery



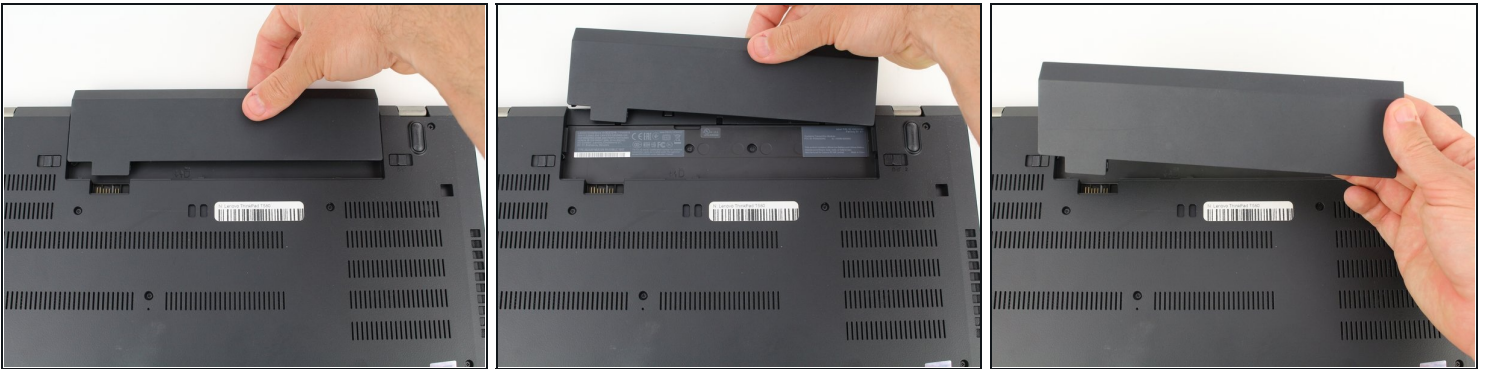
- Slide the switch on the left side of the battery to the left.

## Step 2



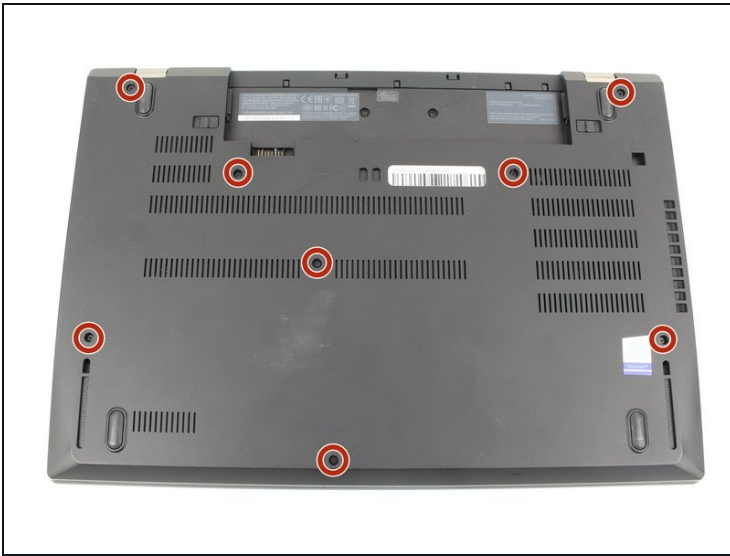
- Slide the switch on the right side of the battery to the right while applying upward pressure on the battery.

## Step 3



- Pull the battery directly out of the socket

## Step 4 — Bottom Case



- Using a Phillips #00 screwdriver, unscrew the eight 3.3 mm captive screws on the bottom of the laptop.

ⓘ The "captive" screws will not come out of the case.

## Step 5



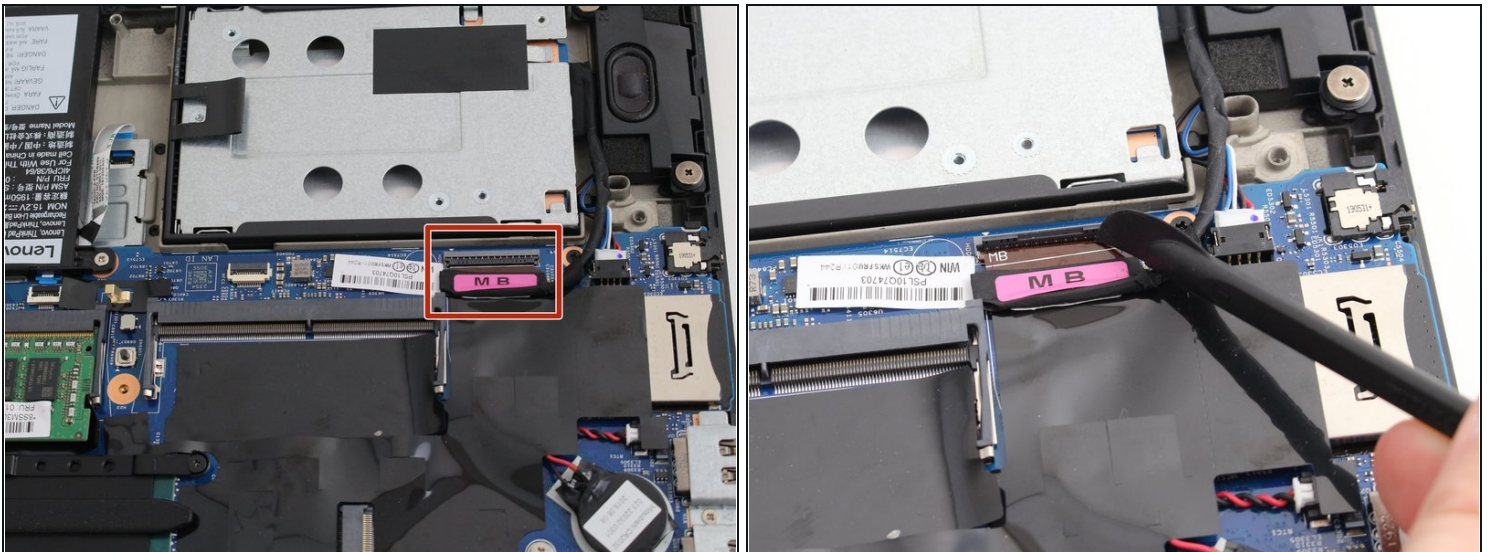
- Run a jimmy along the crease of the computer all the way around, twisting it periodically to disengage the clips.

## Step 6



- Once all the clips are released, remove the bottom cover.
- ❗ You may need to jiggle the case slightly to release the clips around the external battery bay.

## Step 7 — Hard Drive



- Using a spudger, flip up the locking black tab of the hard drive ZIF connector.
- Pull the hard drive cable out from the connector on the motherboard.

## Step 8



- Pull the hard drive case out of the slot using the tab.

---

To reassemble your device, follow these instructions in reverse order.