



Lenovo Yoga 730-13IKB Touchscreen Display Replacement

Use this guide to replace the touchscreen...

Written By: Ethan Wagner



INTRODUCTION

Use this guide to replace the touchscreen display on a Lenovo Yoga 730 13-IKB (model numbers starting with “81CT”). The touchscreen display functions as a regular display and also recognizes direct, physical user input.

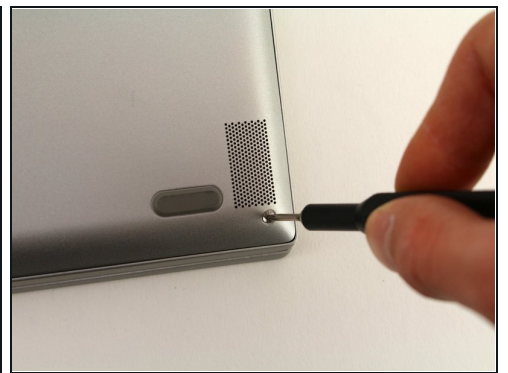
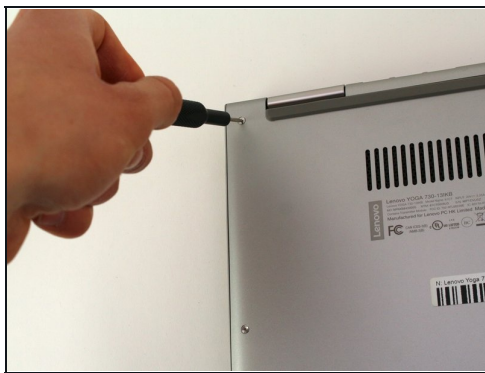
Many screen-related problems can be remedied with software fixes. Review the [Lenovo Yoga 730-13IKB troubleshooting guide](#) if you are experiencing display issues before replacing the touchscreen assembly.


Replacing the touchscreen is an advanced process and is recommended for confident users. Keep any debris or liquids away from the computer while replacing the motherboard because the internal components of the laptop are exposed.

TOOLS:

- T5 Torx Screwdriver (1)
 - Phillips #0 Screwdriver (1)
 - Spudger (1)
 - Phillips #000 Screwdriver (1)
 - Phillips #00 Screwdriver (1)
 - iFixit Opening Tool (1)
-

Step 1 — Back Case



-  Power off the laptop and place it facedown on a non-scratching surface.
- Remove the nine T5 screws fastening the back case.

Step 2



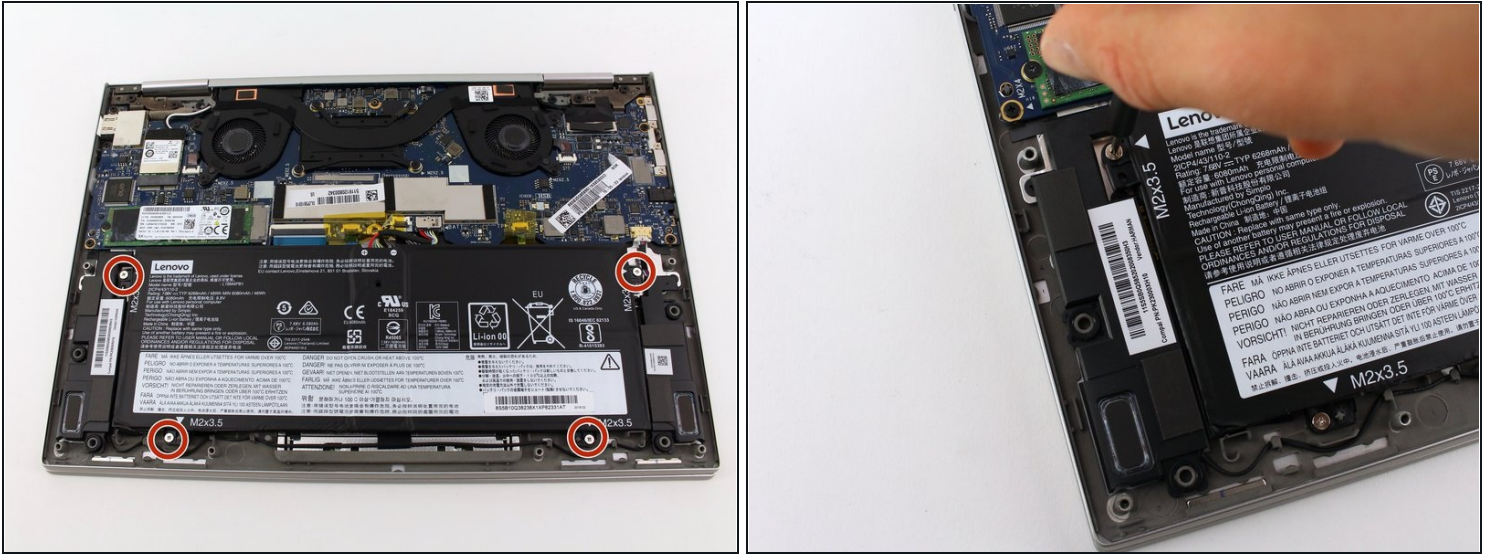
- Slide a plastic opening tool underneath the back case near the screen hinges. Gently pry up on either side.
 - Slide the opening tool underneath the back case next to the middle screw hole at either side of the case. Gently pry up.
- ① You may hear popping sounds as the tabs securing the case release. This is normal. If the case does not move, try prying at a different angle/position.

Step 3



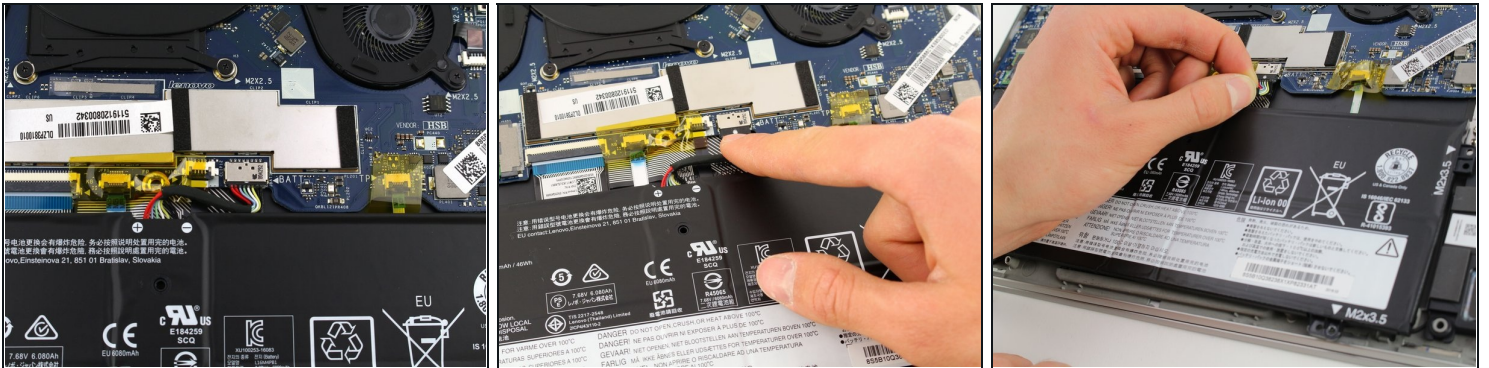
- Remove the back case by pulling up near the screen hinges and lifting diagonally away from the laptop.
- ① Go slowly to avoid breaking any connecting tabs.

Step 4 — Battery



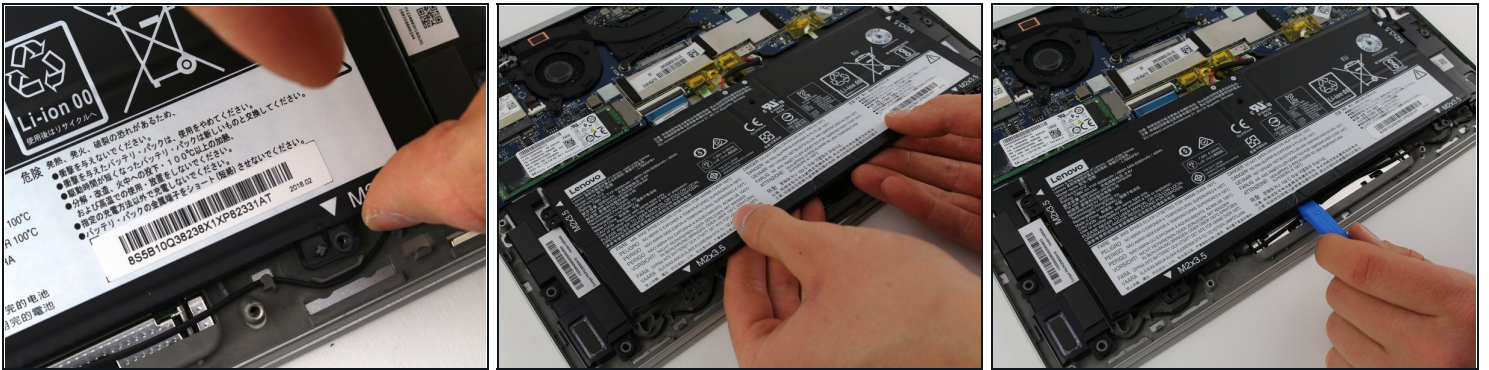
- Remove the four 3.5mm Phillips #0 screws securing the battery.

Step 5



- Disconnect the battery cable by gently pulling it straight out of the connector.
- ☒ The battery connector does not lock and requires light pressure to insert and remove. To reinstall the battery cable, hold onto the black housing and push it into the motherboard connector.

Step 6



- Remove the battery by pulling up near the white label and lifting diagonally away from the laptop.
- ❗ Consider using a plastic opening tool to gently pry up near the white label if the battery seems stuck.
- ☑ To reinstall the battery, carefully align its mounting holes with the plastic pins on the laptop frame.

Step 7 — Heat Sink



- Use a Phillips #00 screwdriver to remove the eight 2.5mm screws securing the heat sink assembly.

Step 8



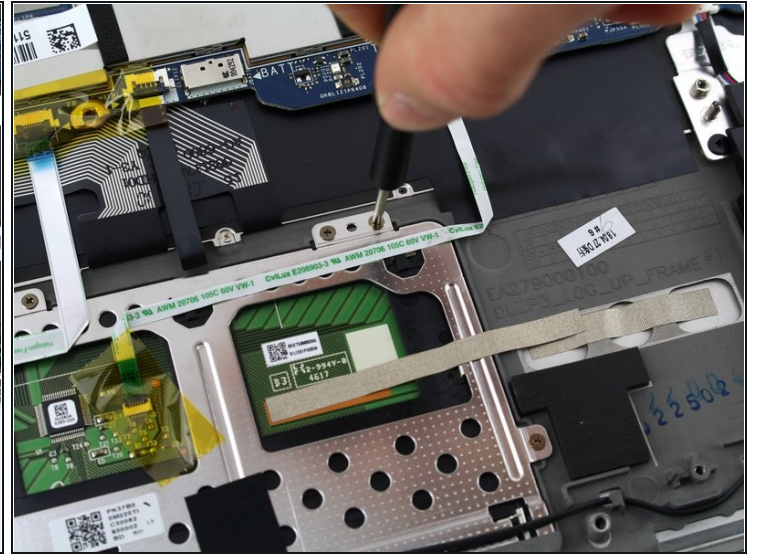
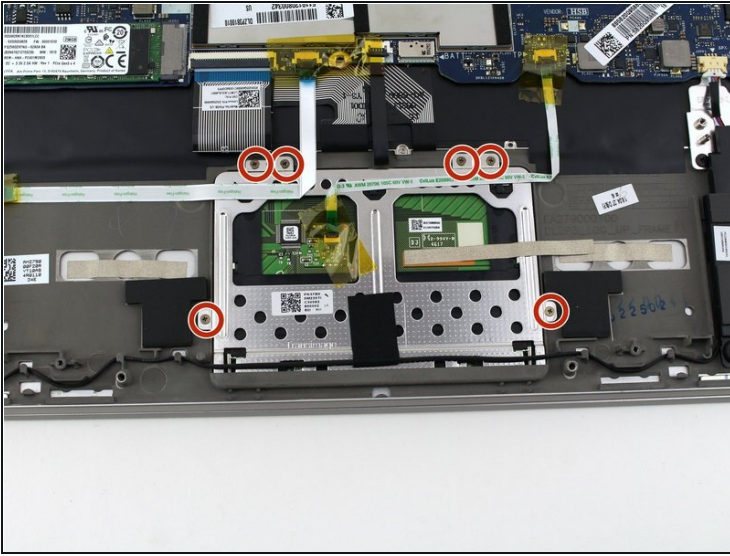
- Release the fan connector by gently pushing the gray locking tab up using a plastic spudger. Do this for both of the fans.
- Pull each fan cable straight out of the connector.

Step 9



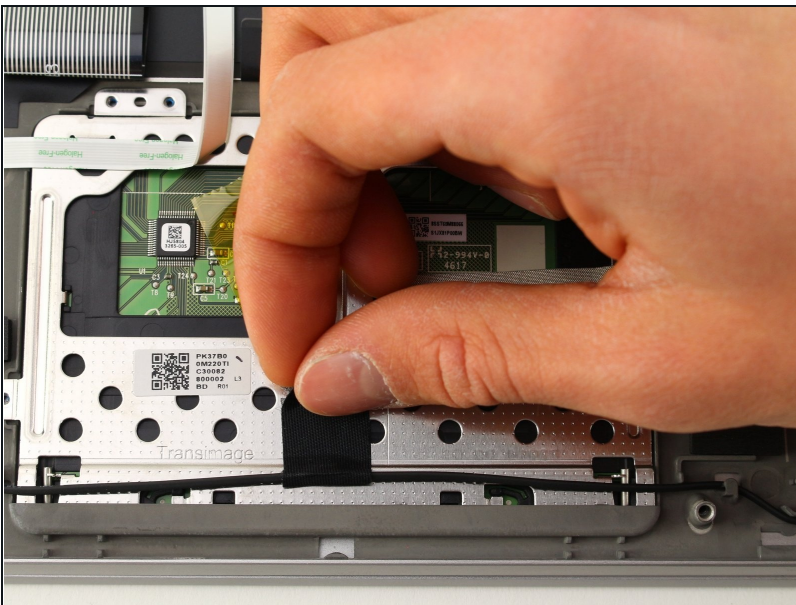
- Remove the heat sink assembly by holding the middle plate and rotating the assembly down towards the back of the motherboard.
- Pull the heat sink diagonally away from the laptop.

Step 10 — Touchpad



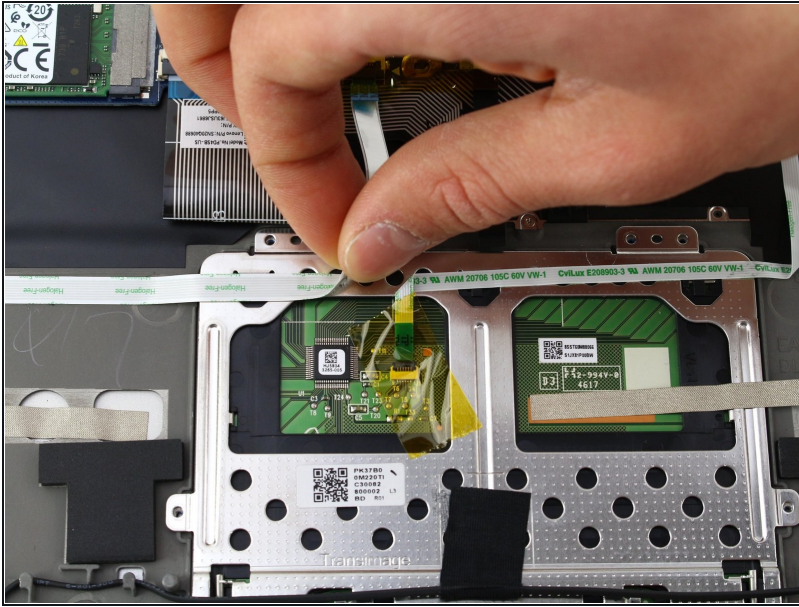
- Use a Phillips #00 screwdriver to remove the six 2.5mm screws holding down the touchpad.

Step 11



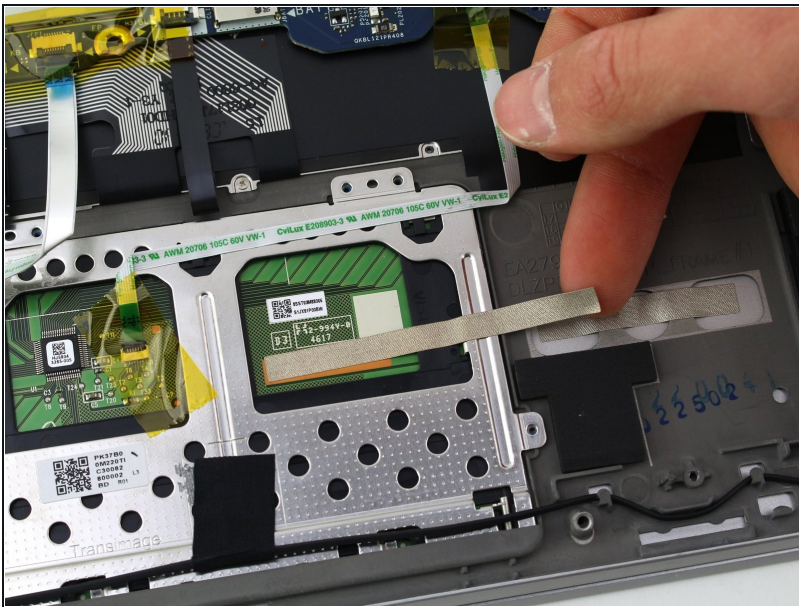
- Peel back the fabric adhesive strap holding the speaker wire to the touchpad.
- ① Using light heat from a hairdryer or heat gun may help loosen the adhesive.

Step 12



- Peel off the fingerprint sensor cable glued to the top of the touchpad.
- ⓘ Light heat from a hairdryer or heat gun may help loosen the adhesive.

Step 13



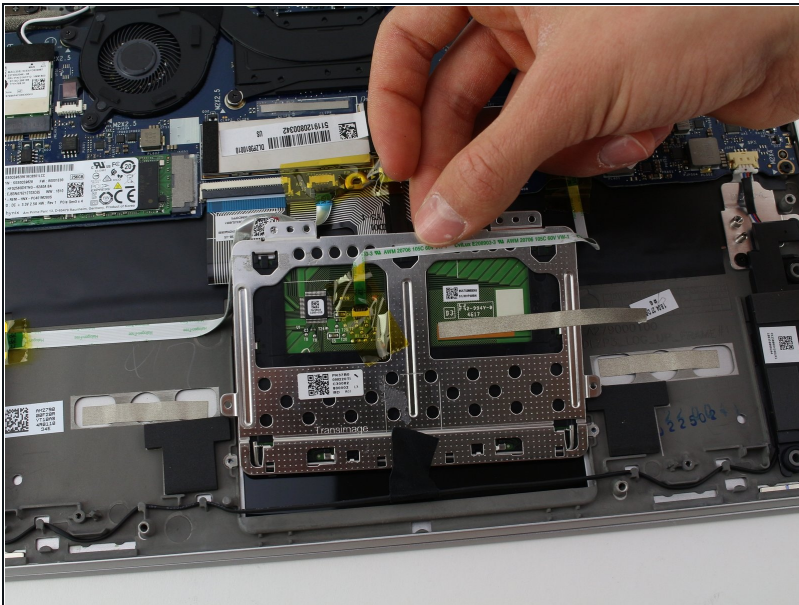
- Slightly pull up the metal strap connecting the touchpad and the laptop frame.
- ⓘ The metal strap is not glued down and only needs to be disconnected, not removed, from the laptop frame.

Step 14



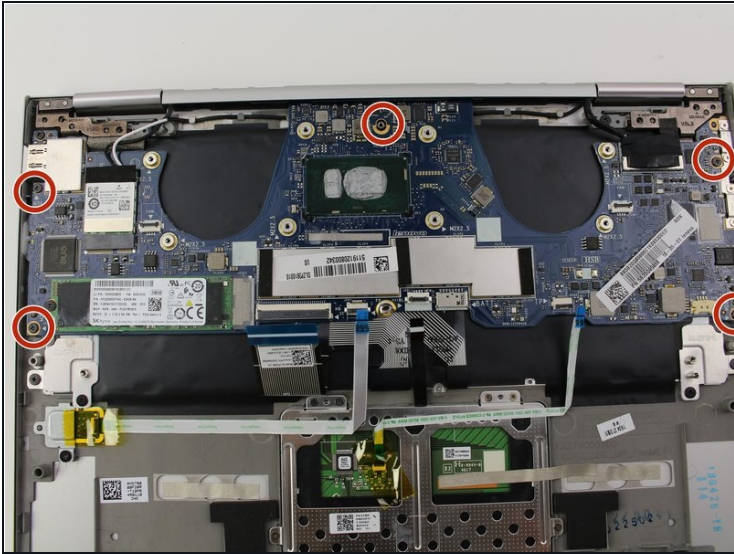
- Peel the yellow tape off of the touchpad connector.
- Gently push the gray tab up on the connector using a spudger. Pull out the cable.

Step 15



- Hold the top of the touchpad and gently pull up.
- Lift the touchpad diagonally away from the laptop.
- ❗ The laptop screen is now visible through the touchpad cutout. Be careful not to drop anything on it.

Step 16 — Motherboard



- Use a Phillips #00 screwdriver to remove the five 3.5mm screws securing the motherboard.

Step 17



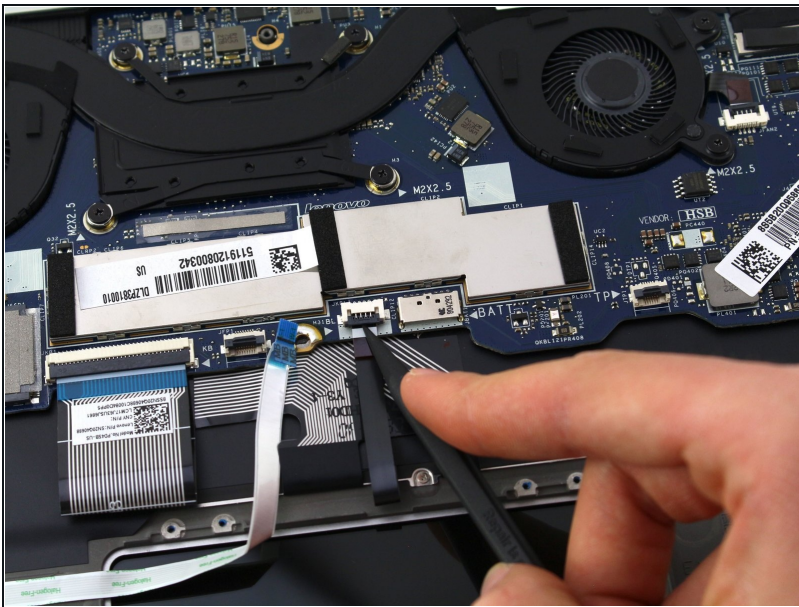
- Use a Phillips #000 driver to remove the four 3mm screws holding down the connector bracket.

Step 18



- Lift the bracket up from the motherboard and place aside.

Step 19



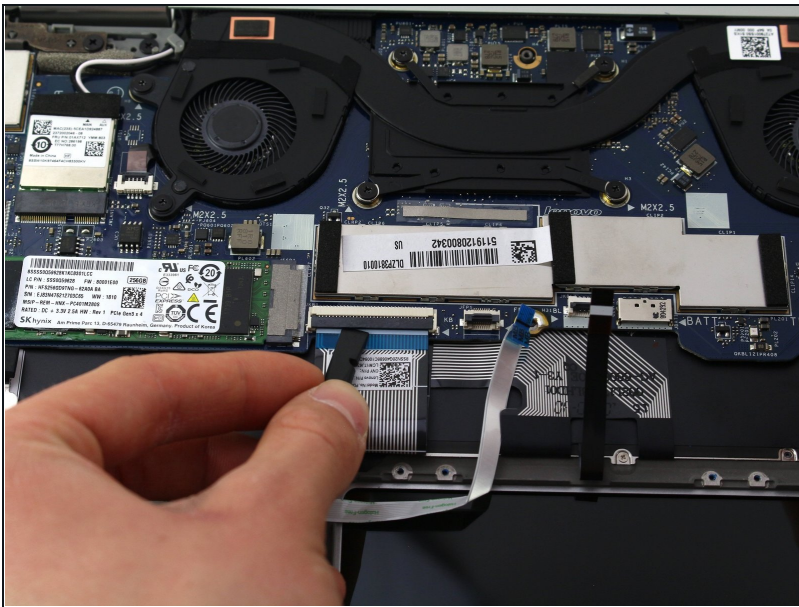
- Use a spudger to remove the bluetooth cable by flipping up the gray connector tab. Pull out the cable.

Step 20



- Use a spudger to remove the fingerprint sensor cable by flipping up the gray connector tab. Pull out the cable.

Step 21



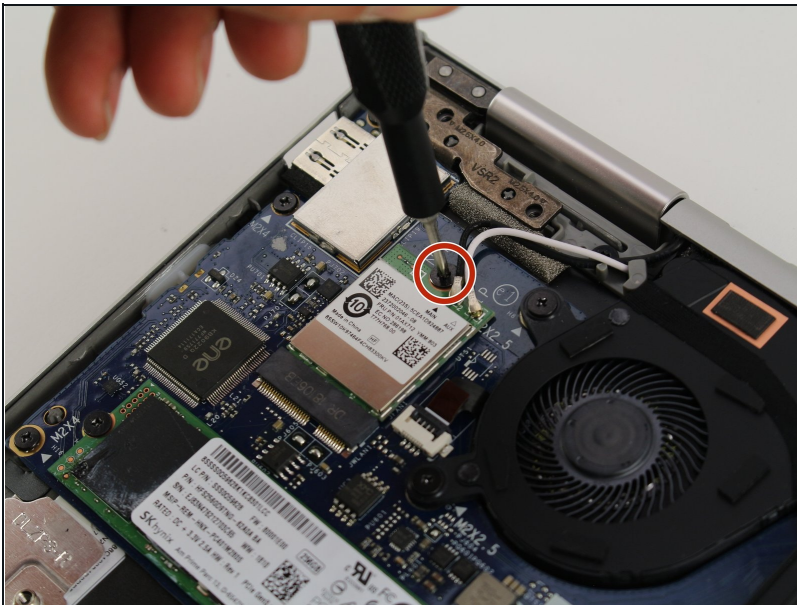
- Use a spudger to remove the keyboard cable by flipping up the gray connector tab. Pull out the cable.

Step 22



- Peel the black adhesive strip covering the wires to the LAN card.
- ☑ Keep the adhesive strip for when you reconnect the LAN card.

Step 23



- Use a Phillips #00 screwdriver to remove the 2.5mm screw securing the LAN card.

Step 24



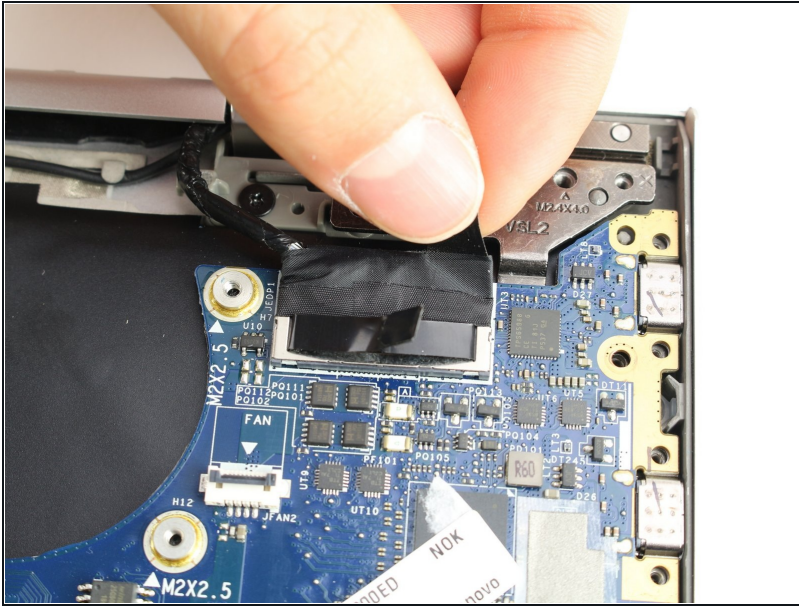
- Gently slide the LAN card straight out of the motherboard connector.

Step 25



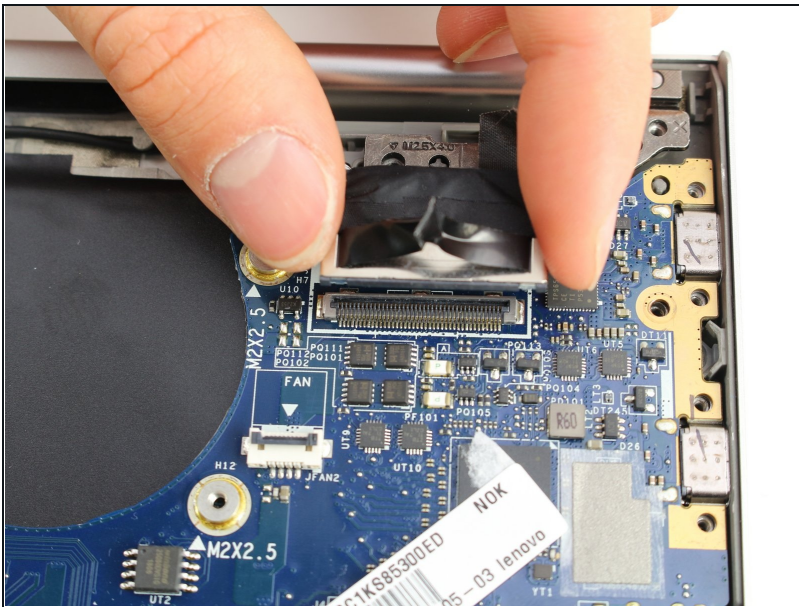
- Disconnect the black and white wires from the LAN card.
- ⓘ The black and white wires attach to the LAN card using a button-style clasp.
- ☑ To reinstall the wires on the LAN card, push down on the wire connector until it clicks.

Step 26



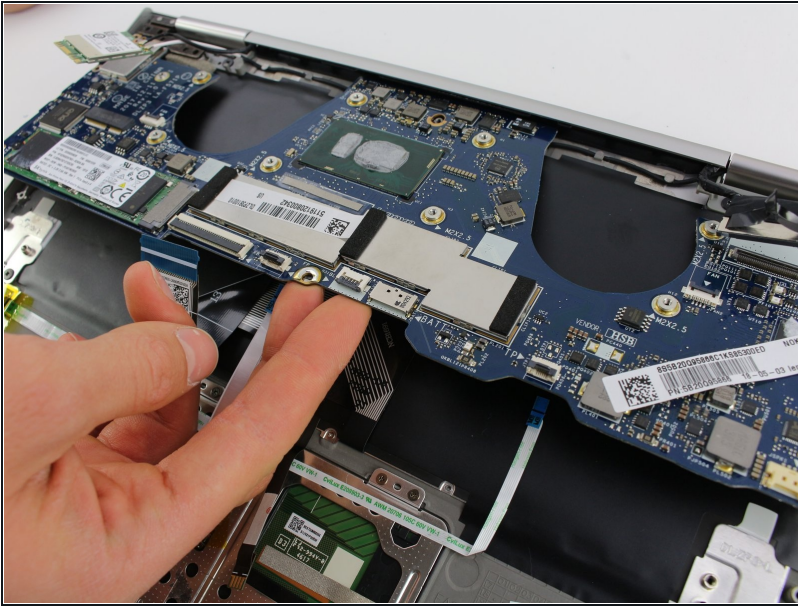
- Peel back the adhesive cover connecting the display connector and hinge.

Step 27



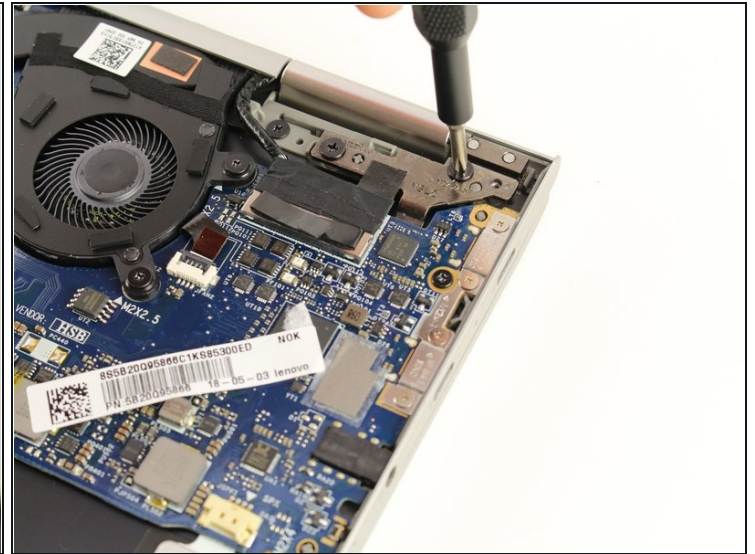
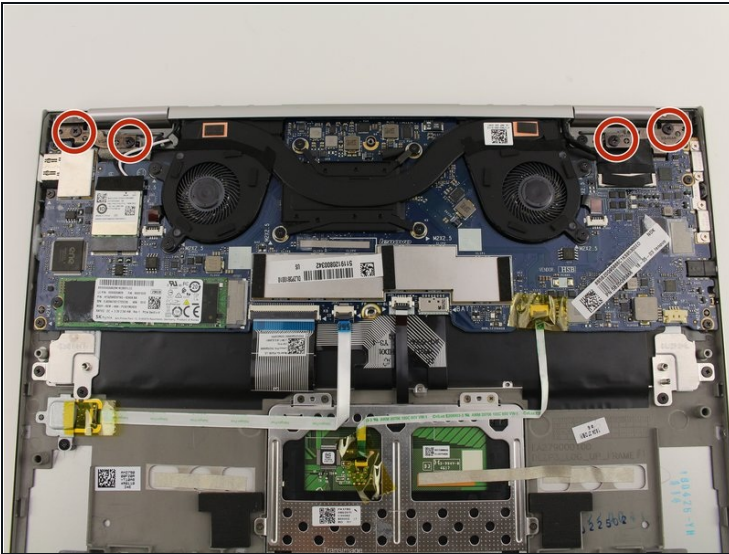
- Lift the display connector straight up from the motherboard.
- ① Use the black pull tab on top of the display connector for more leverage.
- ★ To reinstall the display connector, push it straight down. You may not hear an audible click, but make sure the connector is securely seated.

Step 28



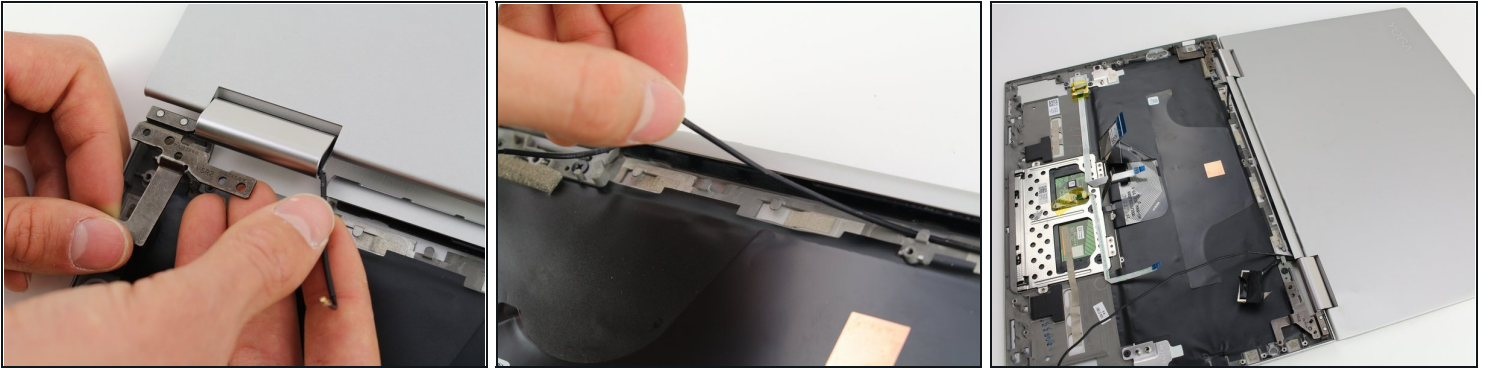
- Remove the motherboard by holding it by the bottom and pulling diagonally away from the laptop.

Step 29 — Touchscreen Display



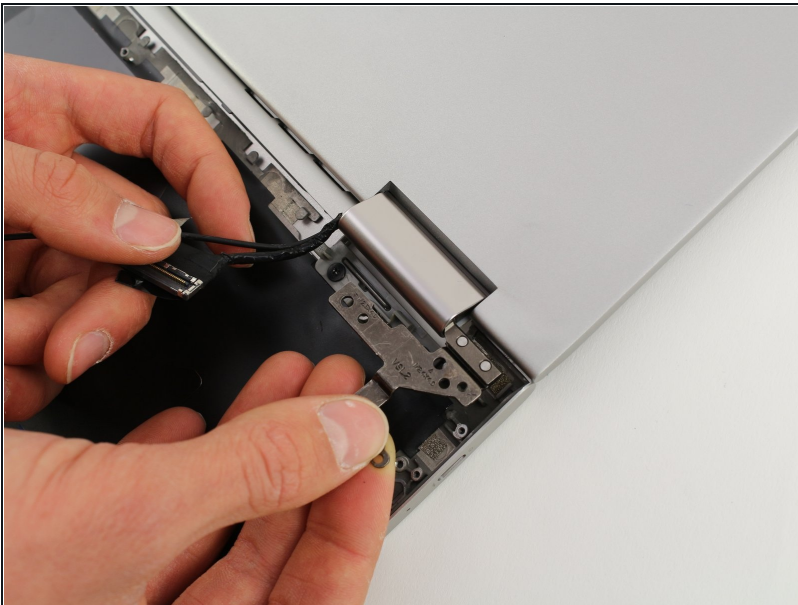
- Use a Phillips #00 screwdriver to remove the four 4mm display hinge screws.

Step 30



- Rotate the screen hinge next to the LAN card away from the laptop frame.
- Pull the black LAN card wire through the hinge and unhook it from the holding tabs.

Step 31



- Rotate the screen hinge above the display connector away from the laptop frame.
- Pull the black display cable bundle through the hinge.

Step 32



- Lift the touchscreen back and up to unhook the hinges from the laptop frame.

To reassemble your device, follow these instructions in reverse order.