



Motorola Moto G7 Screen Replacement

The Motorola Moto G7 has a glass LCD display...

Written By: Peter Nelson



INTRODUCTION

The Motorola Moto G7 has a glass LCD display with a Gorilla Glass screen. Like most glass screen phones it is prone to cracks and other screen malfunctions when dropped or damaged in other ways. Damage to the screen or display may cause internal damage as well.

Before you begin, download the [Rescue and Smart Assistant](#) app to backup your device and diagnose whether your problem is software or hardware related.

This guide outlines the steps to take to properly and safely remove the screen for replacement. The specific device model used in this guide is **Motorola Moto G7**.

See the troubleshooting page if you may not be confident in a primary assessment of the device. Always be careful handling the damaged screen as shattered glass can cause injury.



TOOLS:

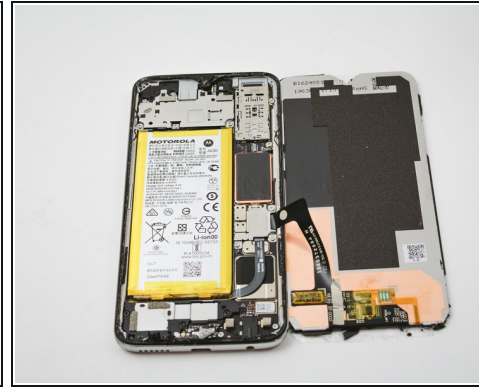
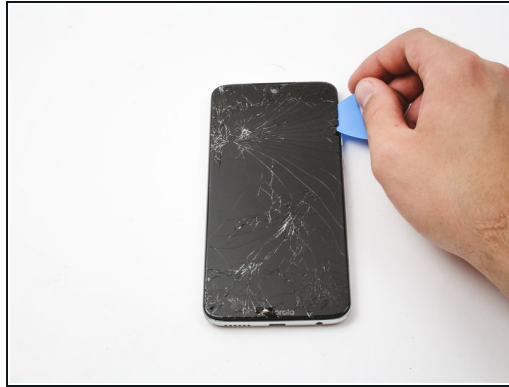
[iFixit Opening Tool](#) (1)
[iOpener](#) (1)
[Heat Gun](#) (1)
[iFixit Opening Picks \(Set of 6\)](#) (1)
[T3 Torx Screwdriver](#) (1)



PARTS:

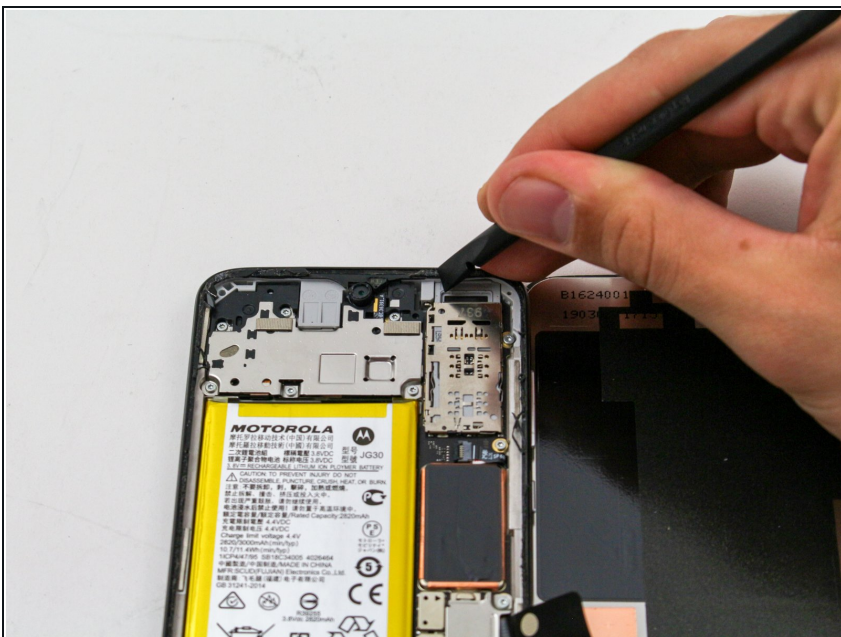
[Moto G7 Screen - Genuine](#) (1)

Step 1 — Screen



- Use the iFixit opening tools to gently wedge the front screen from the rest of the device.
- ① Try to focus on the corners to make it easier to insert and use the iFixit opening picks.
- ① It is also recommended to use the iOpener or a heat gun to weaken the adhesive that holds the edges of the screen down.
- ⚠ The screen is glass, so when using force to lift the screen, be cautious of cracked glass and stray shards of glass coming off.
- ⚠ You have to be extra careful to dig deep enough, so you lift the entire screen unit!

Step 2



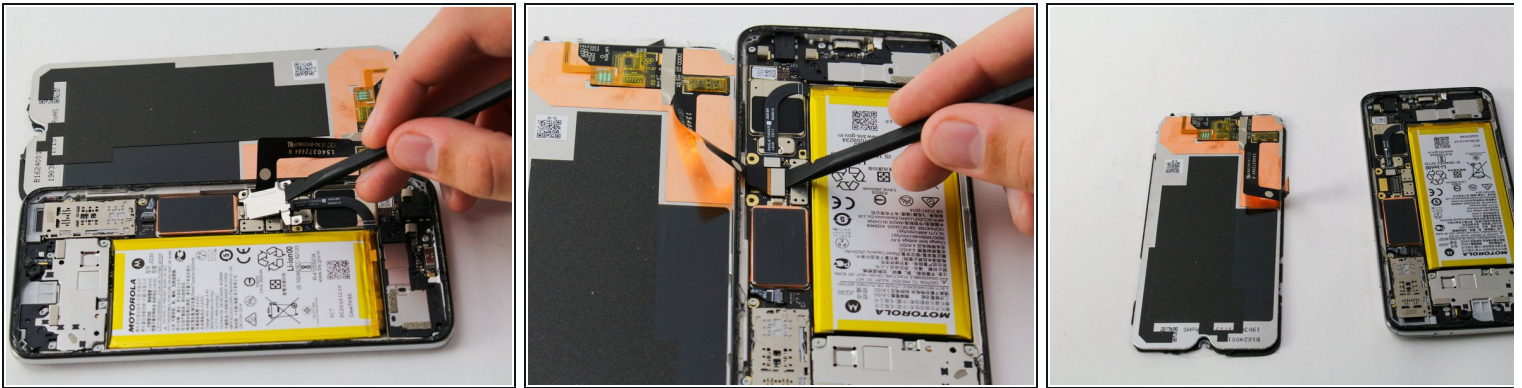
- Excessive glass and adhesive around the edges should be removed with the spudger.
- ⚠ The glass is black and may blend in with edges of the device. Be cautious using bare hands when moving the device.

Step 3



- Remove three 2.7mm T3 Torx screws from the metal piece to the right of the battery.

Step 4



- Use a spudger to gently take off the metal piece that was held down by the screws.
- A second metal piece is held under the first. This can also be popped off by using the spudger and nudging it under the metal piece connected to the band.

To reassemble your device, follow these instructions in reverse order.