



Lenovo Yoga 730-13IKB Storage Replacement

How to replace the storage drive on a Lenovo Yoga 730-13IKB.

Written By: Colin Reay



INTRODUCTION

Use this guide when replacing the storage drive on your Lenovo Yoga 730-13IKB laptop (*model number beginning with “81CT”*).

The storage drive is used to store any created or downloaded data, files, and software programs that run on the computer. The data stored can include pictures, videos, documents, music, and other types of files.

Consider upgrading the storage drive if the current one is full or broken. Failure to boot, slow performance, and file corruption can indicate a broken storage drive. Consider [these steps](#) to optimize performance within Windows before replacing a poor performing drive.

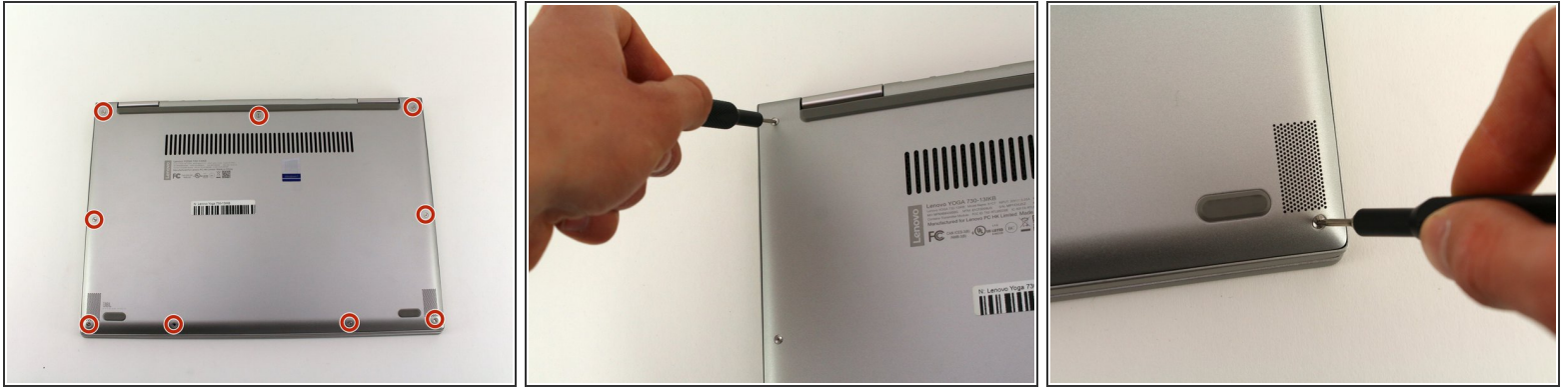
Always [backup](#) your laptop before installing a new drive. It is important to save your existing data even if you wish to do a fresh install of Windows.



TOOLS:

- [iFixit Opening Tool](#) (1)
 - [T5 Torx Screwdriver](#) (1)
 - [Phillips #00 Screwdriver](#) (1)
-

Step 1 — Back Case



i Power off the laptop and place it facedown on a non-scratching surface.

- Remove the nine T5 screws fastening the back case.

Step 2



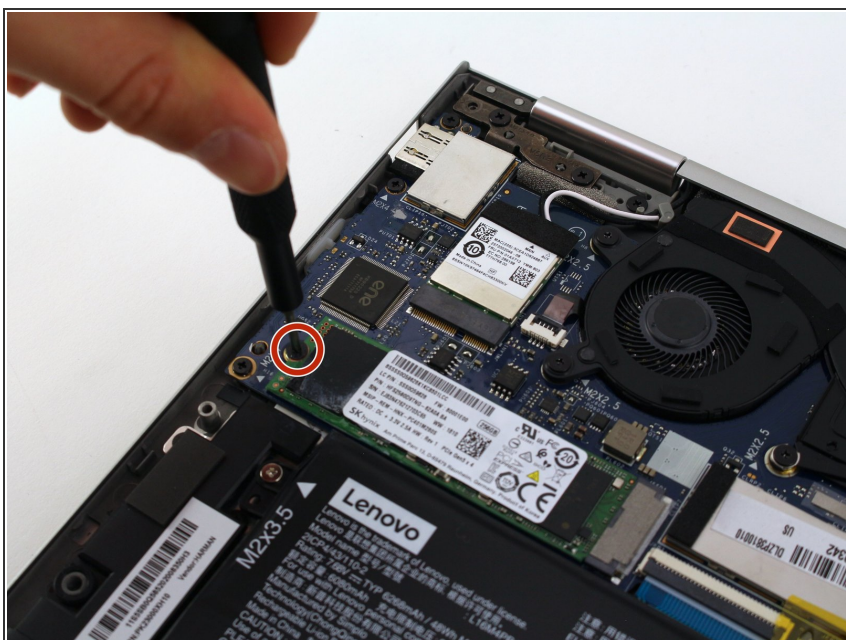
- Slide a plastic opening tool underneath the back case near the screen hinges. Gently pry up on either side.
 - Slide the opening tool underneath the back case next to the middle screw hole at either side of the case. Gently pry up.
- i** You may hear popping sounds as the tabs securing the case release. This is normal. If the case does not move, try prying at a different angle/position.

Step 3



- Remove the back case by pulling up near the screen hinges and lifting diagonally away from the laptop.
- ⓘ Go slowly to avoid breaking any connecting tabs.

Step 4 — Storage



- Use a Phillips #00 screwdriver to remove the 4mm screw holding down the storage drive.

Step 5



- Hold onto the back of the storage drive and slightly lift up.
 - Remove the drive by pulling back at a diagonal angle.
- ☞ To install the storage drive, insert it into the connector at a slight downwards angle. The drive connector is keyed and will only go in one way.

To reassemble your device, follow these instructions in reverse order.