



# Kindle Paperwhite 1st Generation Screen Replacement

Written By: Anthony Nahal



---

## TOOLS:

Phillips #2 Screwdriver (1)  
iFixit Opening Tool (1)  
Spudger (1)  
iOpener Kit (1)

## PARTS:

Kindle Paperwhite (1st Gen) Display Assembly (1)  
Amazon Kindle Paperwhite Display Touch Panel (1)

---

### Step 1 — Case



- Using a spudger or plastic opening tool, gently pry the bezel from the screen. It is easier to start in the corners and work your way around the bezel.

 Do not insert the spudger too far under the bezel; it could easily damage the screen.

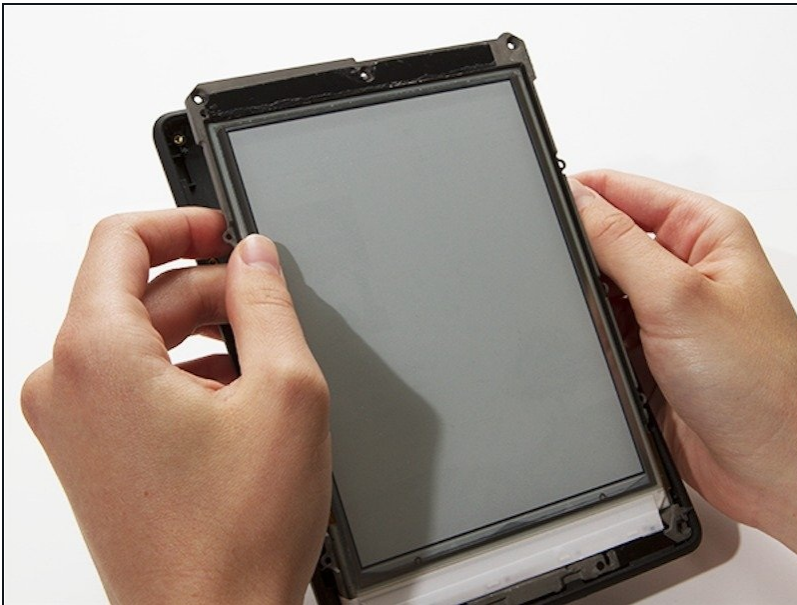
## Step 2



- Remove the eleven 3.0 mm Phillips screws surrounding the midframe.

① At the top of the display, a strip of black tape covers one screw.

## Step 3



- Lift the midframe out of the case.

① If the midframe is stuck, slide it to the left first, and then lift it out.



## Step 4 — Battery



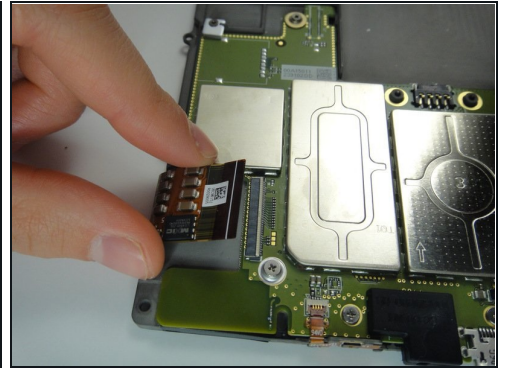
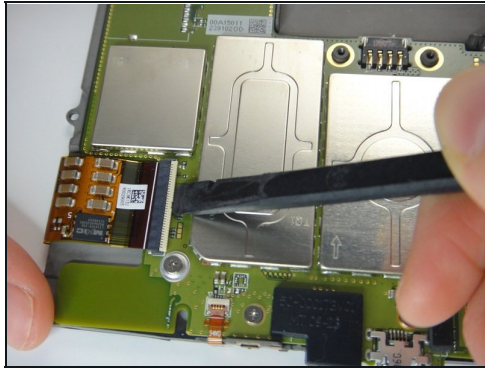
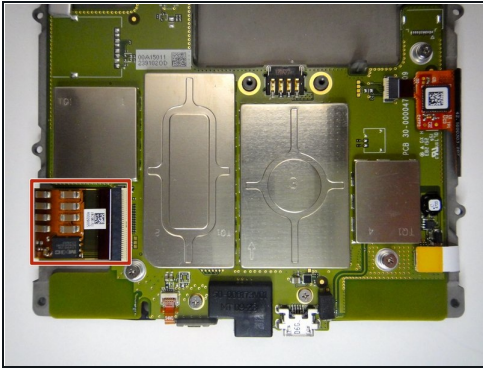
- Turn over the midframe to locate the battery.
- Remove the three Phillips 3.0 mm screws securing the battery to the midframe.

## Step 5



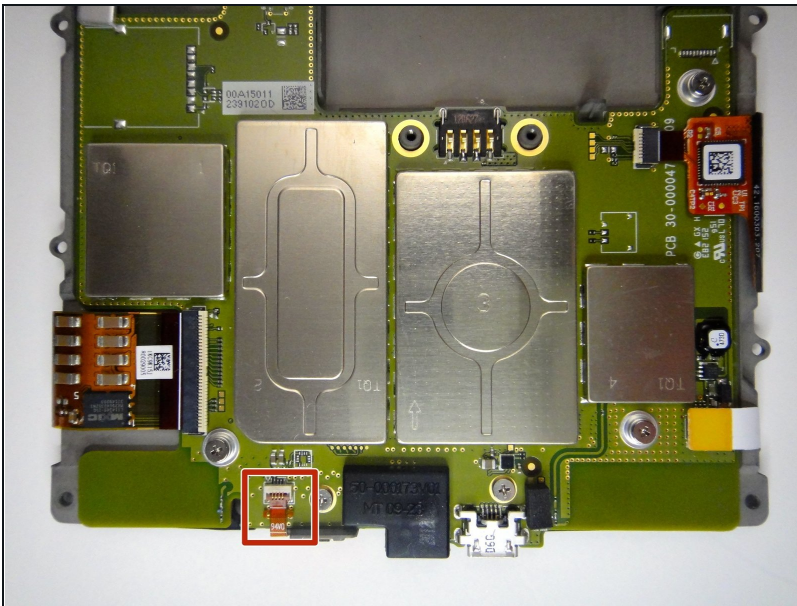
- Gently lift the battery from the bottom, and slide it out of the midframe.

## Step 6 — Screen



- Use a spudger to lift up the retaining flap on the large ZIF connector at the bottom left of the motherboard.
- Gently pull the large ribbon cable out of the ZIF connector.

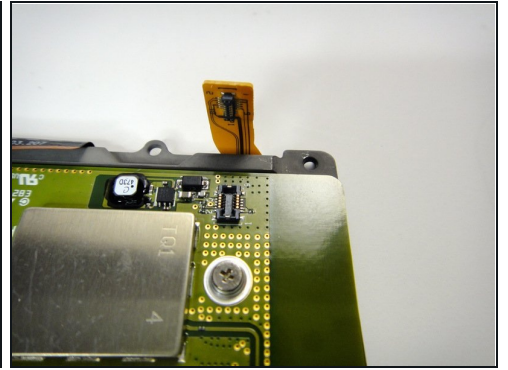
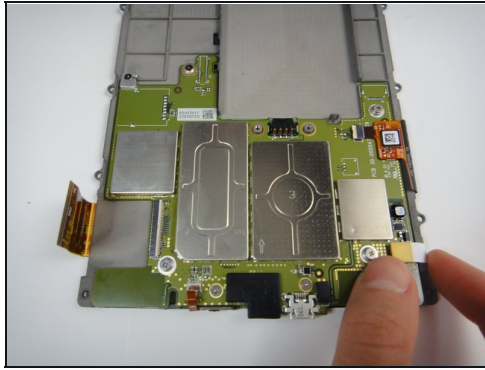
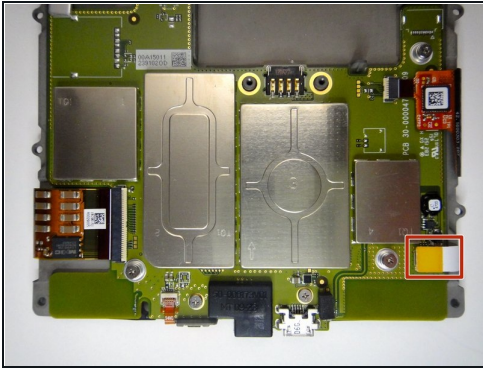
## Step 7



- Flip up the retaining flap on the small ZIF connector at the bottom of the motherboard.
- Pull the small ribbon cable out of the ZIF connector.

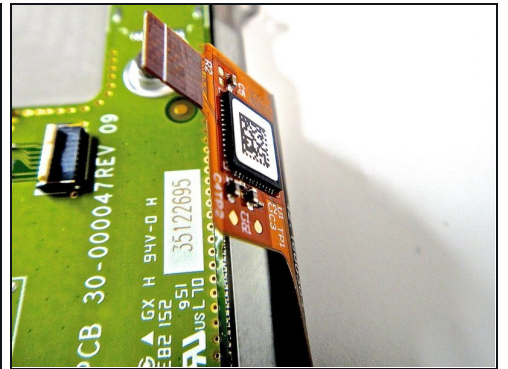
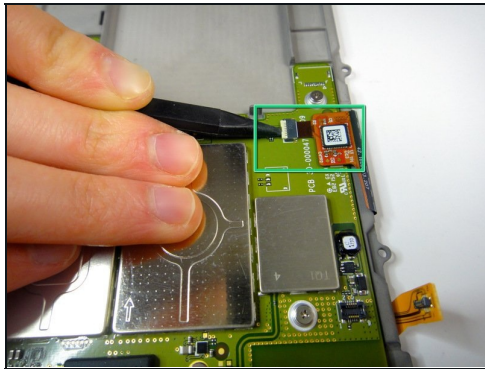
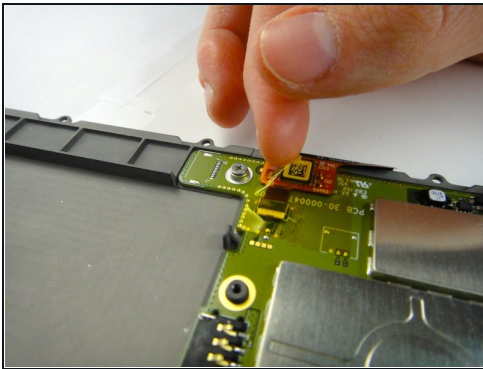


## Step 8



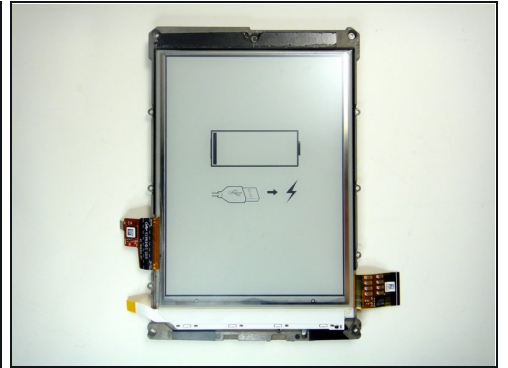
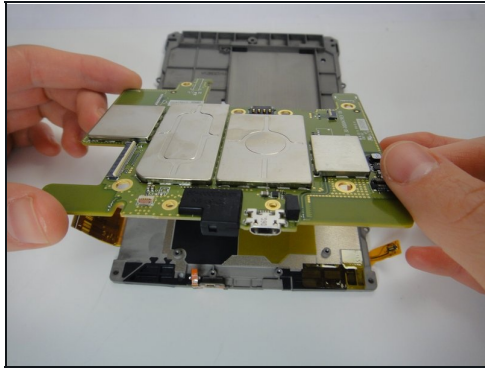
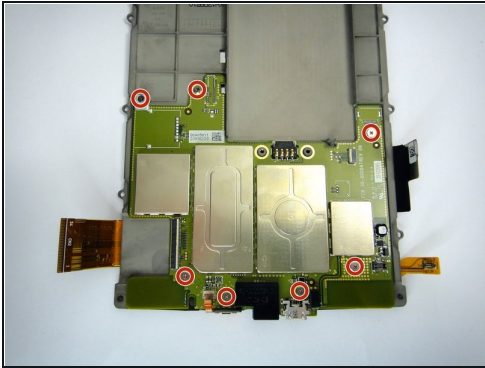
- Lift up the flat, yellow connector from its socket on the bottom right of the motherboard.

## Step 9



- Remove the yellow anti-static tape from the display cable.
- Use a spudger to flip up the retaining flap on the display cable ZIF connector.
- Carefully pull the display cable out of its socket.

## Step 10



- Remove the remaining 7 Phillips screws.
  - Lift the motherboard out of the midframe.
  - ☑ The screen itself is glued to the midframe. If your replacement screen does not include the midframe, [heat](#) the screen with an iOpener and gently pry it from the midframe with a spudger or [plastic card](#).
- 

To reassemble your device, follow these instructions in reverse order.