



IBM Thinkpad T60 Wireless Card Replacement

This guide shows how to remove a previously...

Written By: Cody Kratochvil



INTRODUCTION

This guide shows how to remove a previously existing wireless card. Be sure you are comfortable with the palm rest and keyboard removal guides before attempting this guide. Remember to always power down the computer before attempting any installation/removal of any hardware components. Be sure to remove the AC adapter and all cables from the computer. If the computer has been on, wait several minutes before beginning the procedure to ensure all parts have cooled down.

TOOLS:

Phillips #0 Screwdriver (1)

Step 1 — Battery



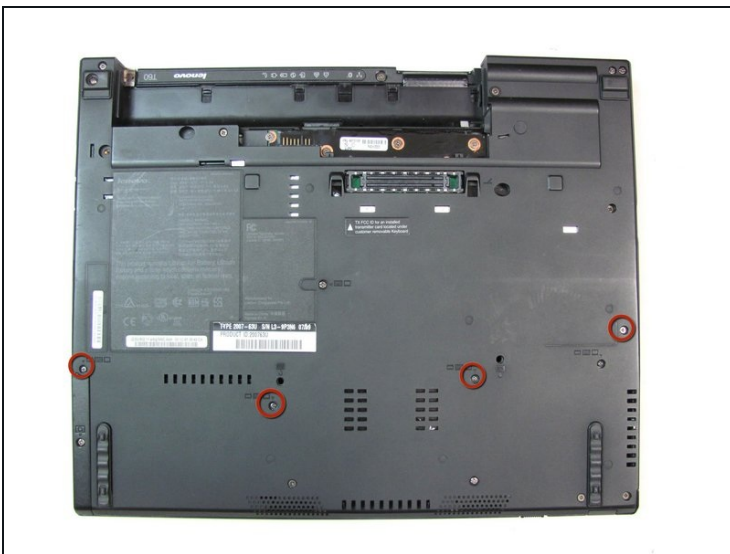
- Turn the computer over to see the small tab on the battery located near the top of the Thinkpad.
- Use your finger to slide the tab to the right to unlock the battery.

Step 2



- Once the tab is in the unlocked position (far right), pull the battery outwards away from the Thinkpad.
- The battery is now disconnected.

Step 3 — Palm Rest



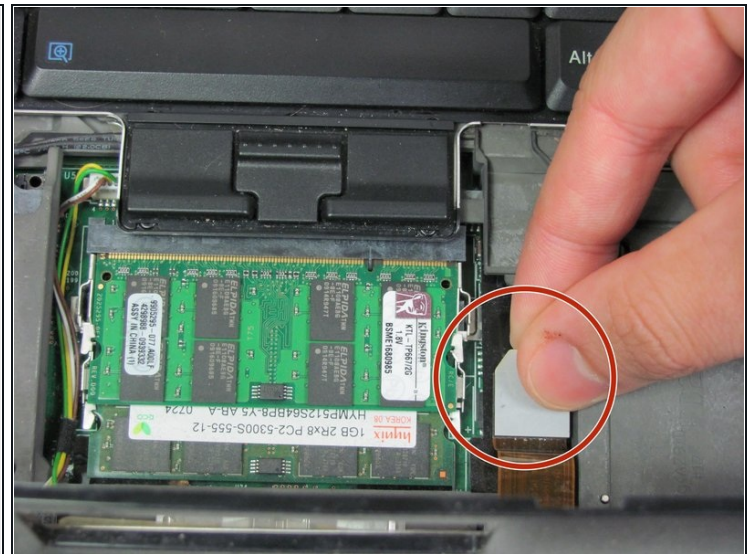
- Using a #0 Phillips screwdriver, remove the four 17.0 mm screws.

Step 4



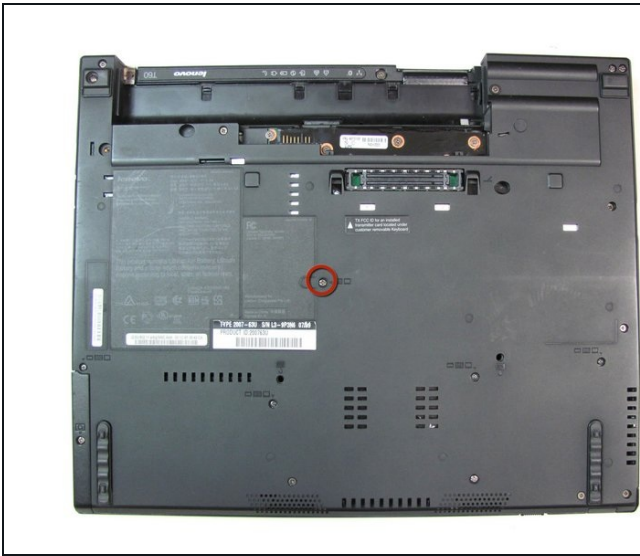
- Turn the computer back over, so the keyboard is facing upwards.
- Open the display to access the palm rest. Apply pressure to the sides of the palm rest so that it bends upwards in the middle. Gently lift away from the computer.

Step 5



- Slightly lift the palm rest away from the computer.
⚠ The touchpad's data cable connects the palm rest to the base unit. BE CAREFUL!
- Detach the connector by pulling upwards on the white tab.

Step 6 — Keyboard



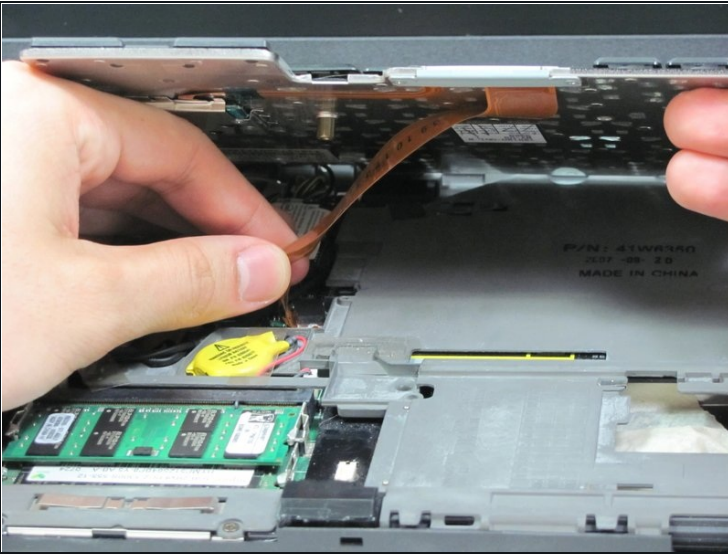
- Turn the Thinkpad over so you can see the bottom.
- Using a #0 Phillips screwdriver, remove the 17.0 mm screw.

Step 7



- First, flip the laptop back over. Next, use your fingers to pry the keyboard upwards slightly.
- Lift the keyboard until you are able to see the wire connection

Step 8



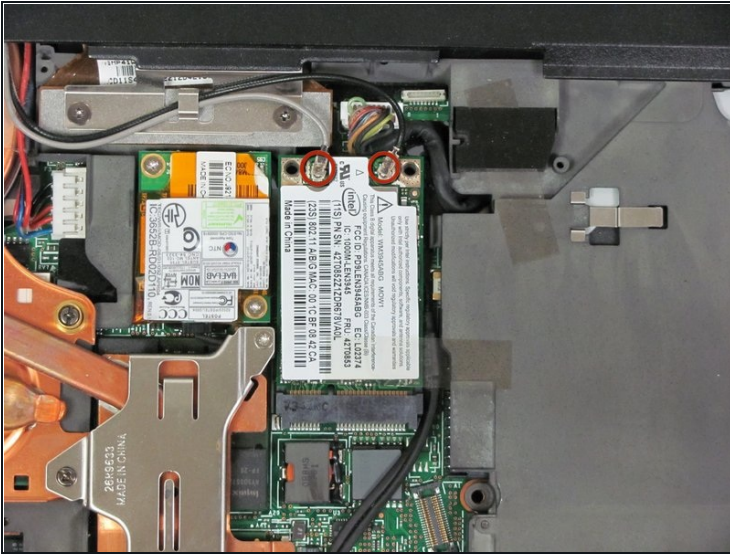
- Pull upwards on the connector to disconnect the keyboard.
- The keyboard is now disconnected.

Step 9 — Wireless Card



- Using a #0 Phillips screwdriver, remove the two 10.5 mm screws.

Step 10



- Disconnect the two connectors by pulling upwards on the base of the grey and black cables.

Step 11



- Grasp the sides of the card and pull perpendicular to the slot.
- The wireless card is now disconnected.

To reassemble your device, follow these instructions in reverse order.