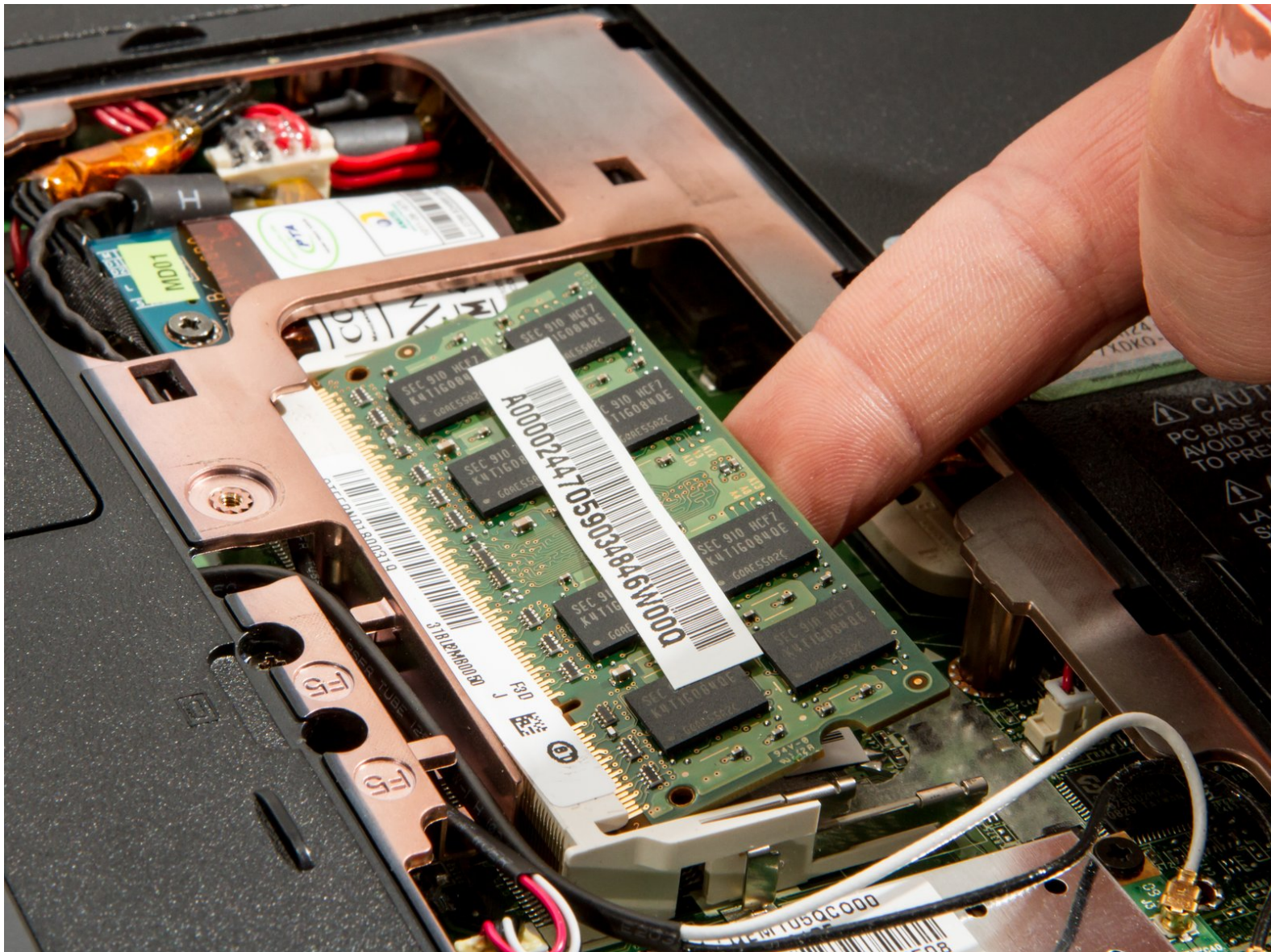




Toshiba Satellite U405D-S2902 RAM Replacement

This guide will show you how to insert additional RAM/Memory into your laptop.

Written By: Brandon Kirklen



INTRODUCTION

The RAM is the amount of data that can be accessed at the same time. By upgrading this, you will be able to multitask and run more programs without slowing down the computer. Before beginning this guide, make sure to have purchased the memory board you wish to install.



TOOLS:

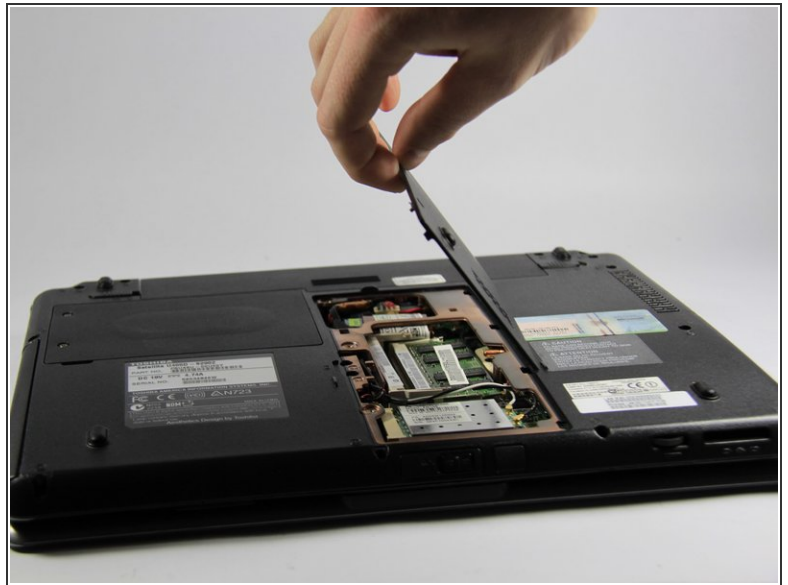
- [Phillips #1 Screwdriver](#) (1)



PARTS:

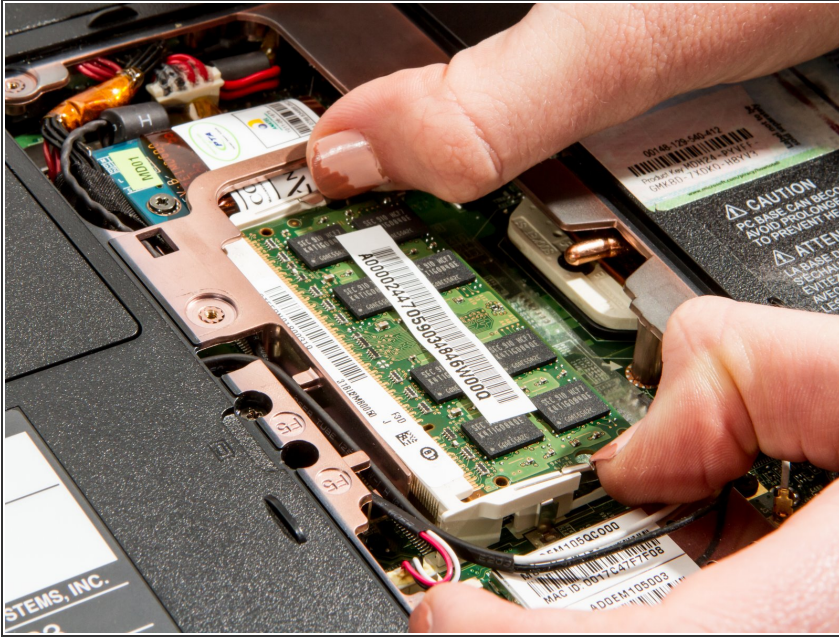
- [PC2-6400 2 GB RAM Chip](#) (1)

Step 1 — RAM



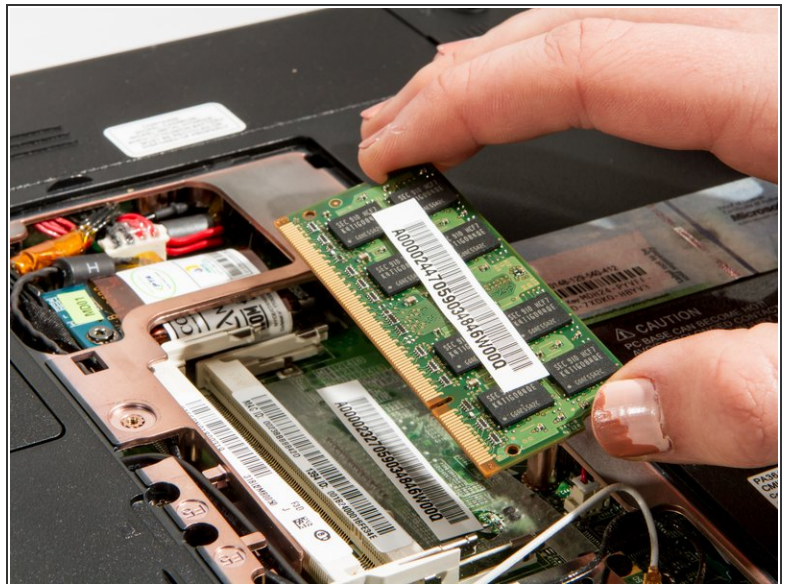
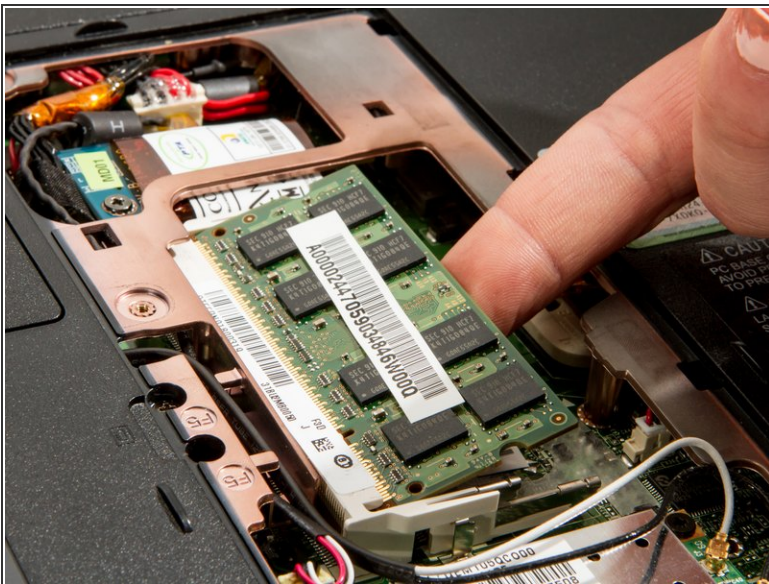
- Lay the device face down with the battery facing away from you. Locate the center panel. It will have two vents in it and three screws on the left side.
- Loosen the three screws that hold the rear access panel on, using your Phillips #1 Screwdriver.
 - ⓘ The screws will not actually come out from the panel but will be loose and let the panel come off.
- Lift the left side of the panel to remove it.

Step 2



- Locate and pull back the two mounting clips on either side of the memory chip.
- ⓘ Be sure that when replacing the board, push down gently until the clips snap back in.

Step 3



- Lift RAM circuit board to about a 45 degree angle and pull gently to the right.

That's it for hardware, the remaining steps will depend on the software platform being run on your laptop.