



Archived

# Hello Zee Smart Core Battery Replacement

Do this at your own risk. This battery is...

Written By: 9021007



# INTRODUCTION

Do this at your own risk. This battery is dangerously soldered down, so replacements can be difficult, and is only for those who have experience with soldering.

## TOOLS:

Metal Spudger (1)

Soldering Iron (1)

Lead-Free Solder (1)

Flashlight (1)

## Step 1 — Exterior



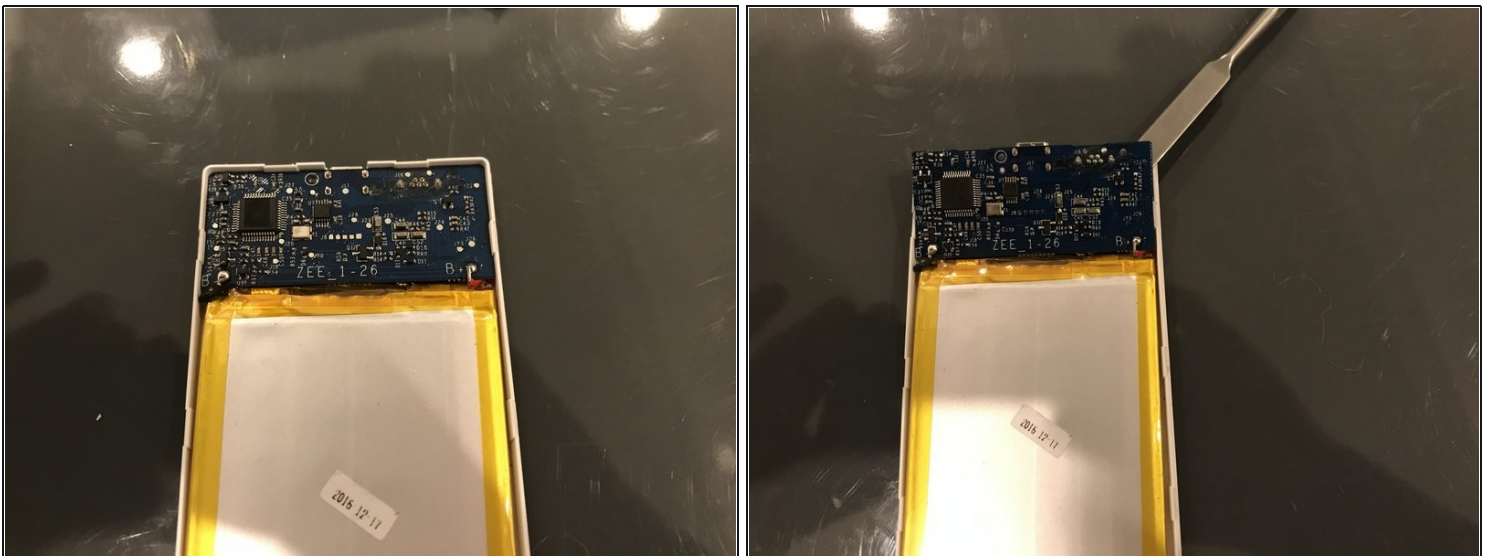
- This particular model is 64GB
- Do not operate on this device if:
  - The battery has swelled or expanded
  - The battery is hot
  - The battery is charged (drain the battery before opening)
  - The battery has been punctured
  - The battery has leaked
  - The device is warm or hot to the touch

## Step 2 — Opening



- Use a metal spudger to get inside.
- A corner is a good place to start.

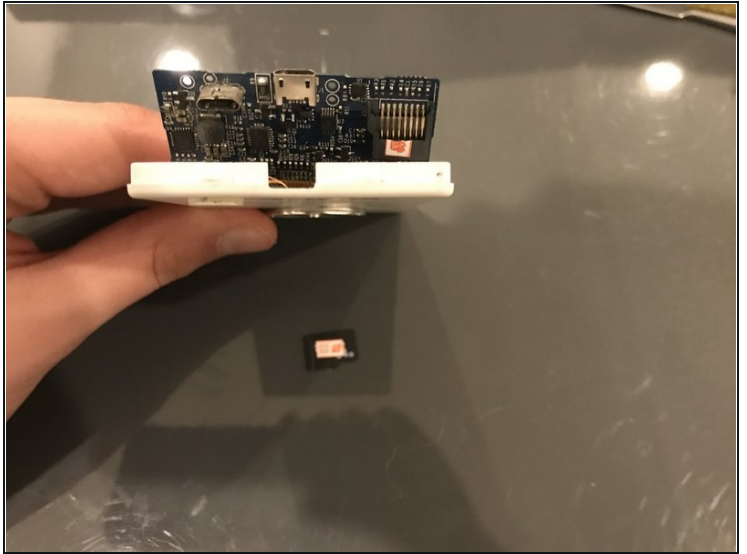
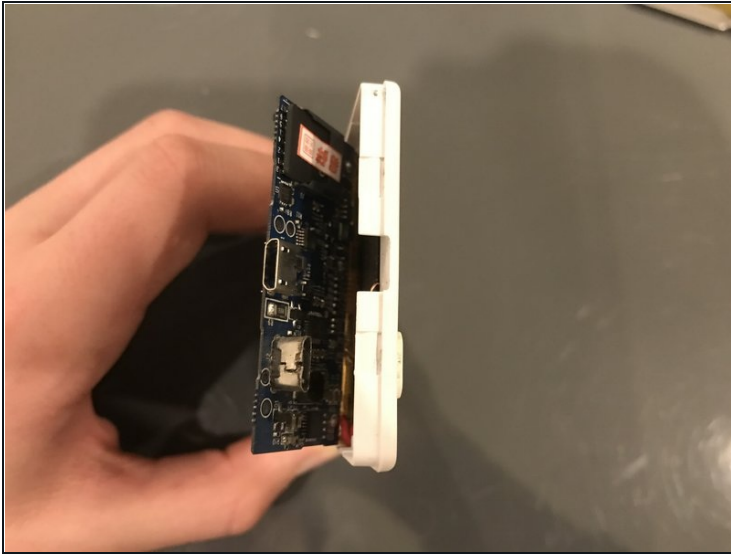
## Step 3 — Circuit Board Removal



- Use the pointed tip of your metal spudger to unscrew the 2 screws
- Make sure to replace the circuit board protective film during reassembly



## Step 4 — Quick Stop



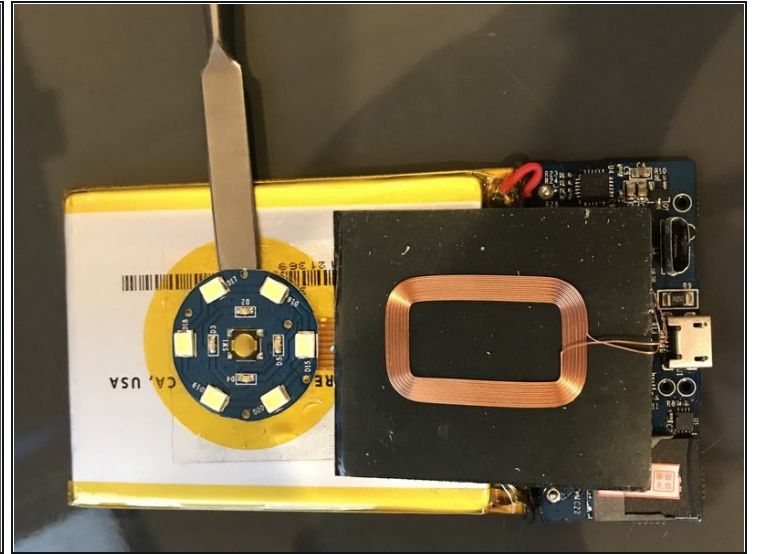
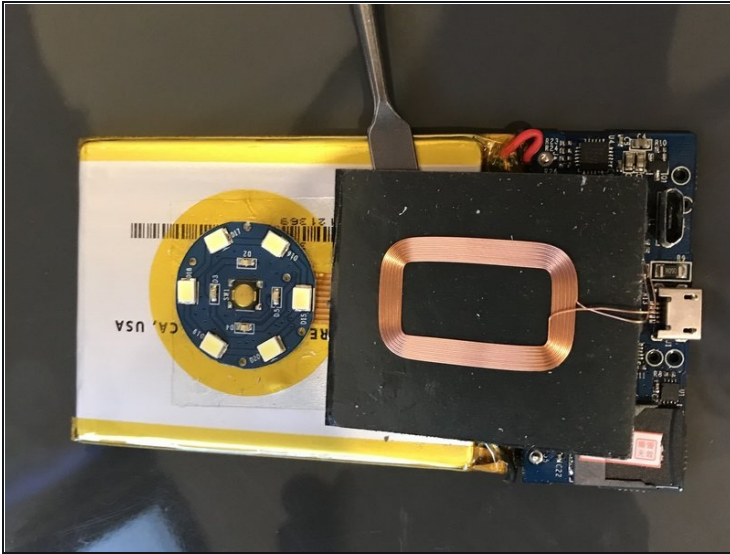
- Here's MicroSD card that you can upgrade if you want!
- Pause here if you wish to do so.

## Step 5 — Electronics Assembly Removal



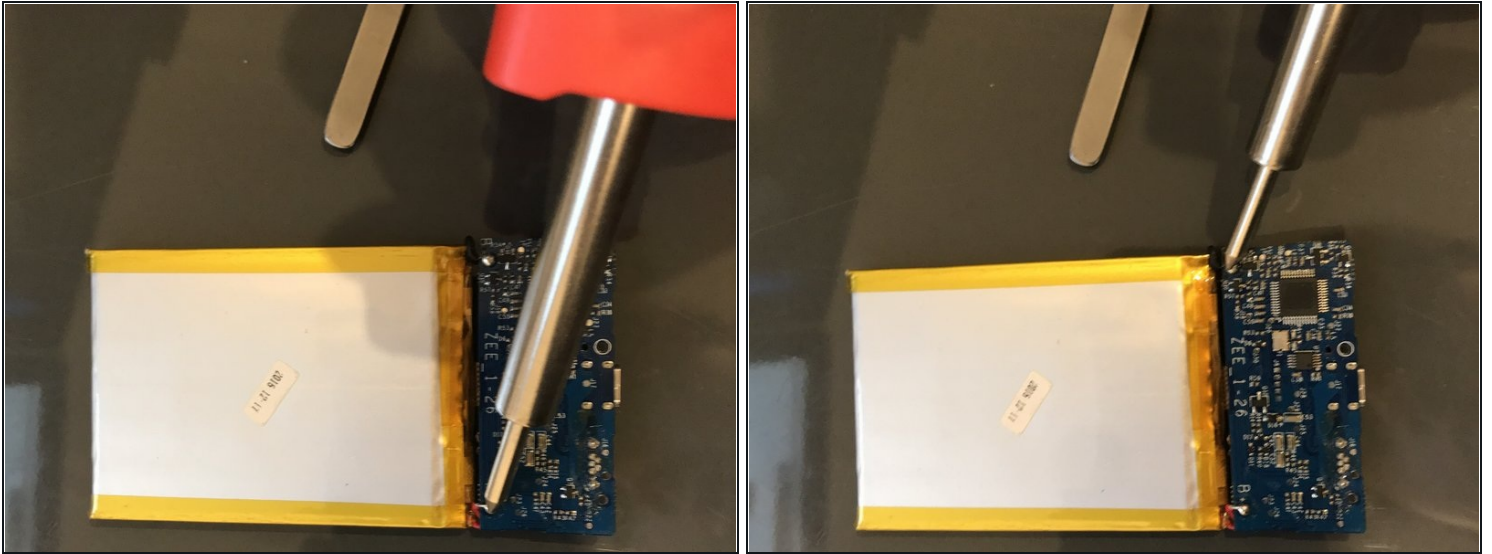
- Pry the battery up with your metal spudger.
- DO NOT PUNCTURE THE BATTERY
- There are no strong adhesives, but there is tape holding the battery in.

## Step 6 — Light Array and Qi Coil Removal



- BE CAREFUL
- This may be a point of no return. Proceed at your own risk
- Use your metal nudger, or any other tools that can help you, in order to remove the Qi Charger and Light Array
- Be careful not to puncture the battery
- Be careful not to cut the Light Array Ribbon Cable
- Be careful not to cut the Qi Coil or its connecting wires

## Step 7 — Battery Desoldering



- Grab a soldering iron. This is about to get even harder.
- Use your favorite desoldering method to remove the battery from the circuit board.
- BE CAREFUL NOT TO PUNCTURE THE BATTERY
  - DO NOT PUNCTURE THE BATTERY PROTECTIVE CIRCUIT

---

To reassemble your device, follow these instructions in reverse order.