



# Clarke Floor Buffer 01278A 2016 Power Cord Replacement

Replace a damaged power cord on your Clarke Floor Buffer 01278A

Written By: Craig Lloyd



## INTRODUCTION

This guide shows how to replace a damaged power cord on the Clarke Floor Buffer 01278A 2016.

You can use regular hand tools for removing fasteners, but using an impact driver will make the procedure easier.



### TOOLS:

- [3/16" Hex Key](#) (1)
- [7/8" Wrench](#) (1)



### PARTS:

- [Nilfisk Cordpower Supply 14-3 X 18 40721A](#) (1)
- [Clarke CORDPOWER SUPPLY 14-3 X 18 40721A](#) (1)

## Step 1 — Remove the Handle Enclosure



- ⚠ Before you begin, make sure the floor buffer is turned off and unplugged.
- Use a 3/16" hex key or driver bit to remove the six 23.4 mm-long screws holding the two halves of the handle enclosure together.

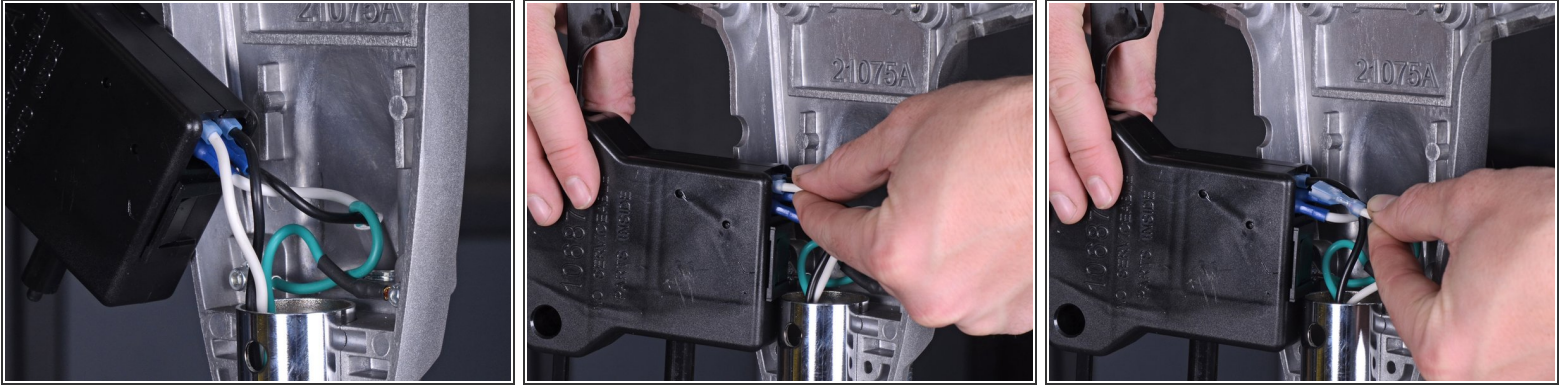
## Step 2



- ⓘ The rear half of the enclosure is bolted to the handle tube, so you'll only need to remove the front half.
- Pull the front half of the enclosure straight away from the rear half to separate the enclosure.
- ⓘ If the interlock assembly comes out with the front half of the enclosure, detach it and place it back into the rear half.
- Remove the front half of the handle enclosure.



### Step 3 — Remove the Interlock Assembly



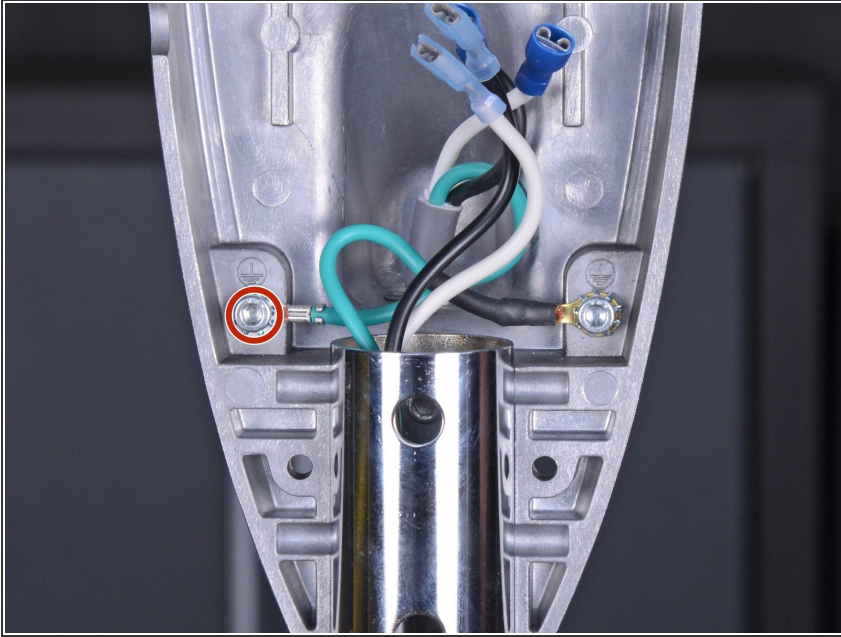
- Pull the wires connected to the interlock assembly straight out of their connectors.
- ① Keep track of where each wire connects to on the interlock assembly.

### Step 4



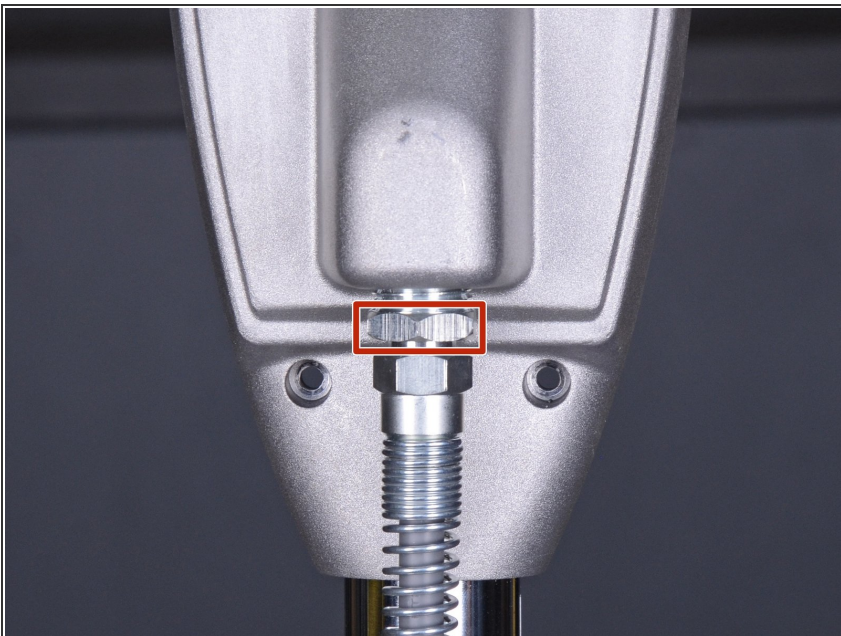
- After all wires are disconnected from the interlock assembly, remove the interlock assembly from the handle.

## Step 5 — Remove the Power Cord



- Use a 3/16" hex key or driver bit to remove the 13.8 mm-long screw securing the power cord's green ground wire to the handle enclosure.
- ⓘ This screw is accompanied with a lock washer. Make sure to retain it for re-assembly.

## Step 6



- Use a 7/8" wrench to loosen the coupling securing the power cord to the handle enclosure.

## Step 7



- Pull the power cord straight down and out of the handle enclosure.
  - ⓘ To avoid damaging the wires, remove the power cord slowly and make sure the wires don't snag on anything as they come out.

To reassemble your device, follow these instructions in reverse order.