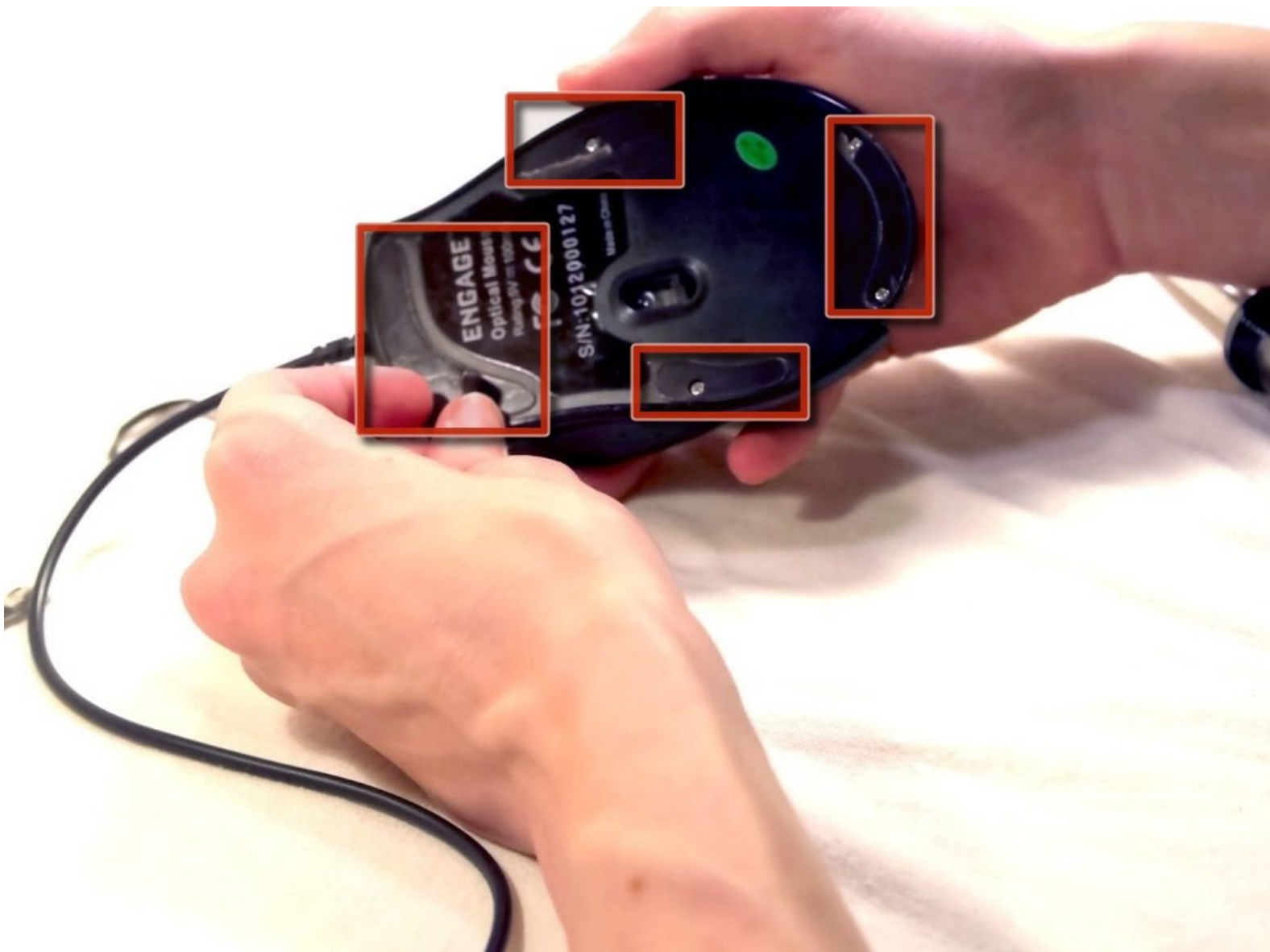




Engage Wired Optical Mouse Top and Outer Shell Removal

This guide will show you how to properly remove the Engage Wired Optical Mouse top shell and the main top component of the mouse.

Written By: royceeklund



INTRODUCTION

The first step of disassembling the Engage Wired Optical Mouse is to remove the outer shell and main top component of the mouse without damaging any parts.

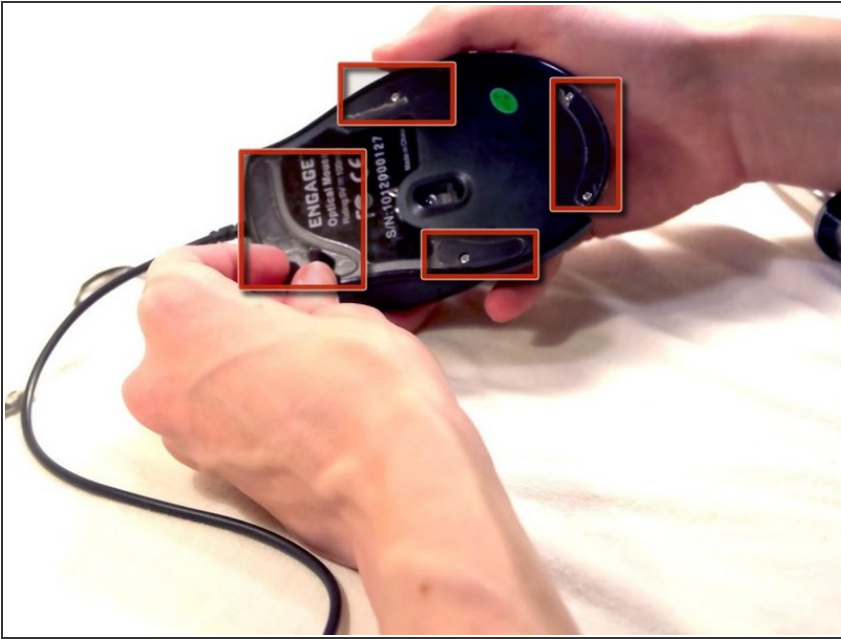
Note that the circuit board has capacitors. Though they aren't very dangerous, you may wish to discharge them before handling the circuit board. A tool to accomplish this [can be found here](#).



TOOLS:

- [Capacitor Discharge Tool](#) (1)
 - [Phillips #1 Screwdriver](#) (1)
 - [Spudger](#) (1)
-

Step 1 — Engage Wired Optical Mouse Top and Outer Shell Removal



- Flip the mouse over and peel off the stickers on the perimeter of the bottom of the mouse.

Step 2



- Use the Phillips #1 screwdriver to remove four 5 mm screws from the bottom of the mouse.
- Use the Phillips #1 screwdriver to remove the two 9 mm screws from the bottom of the mouse.

Step 3



- Grab the top shell of the mouse and lift up to remove.

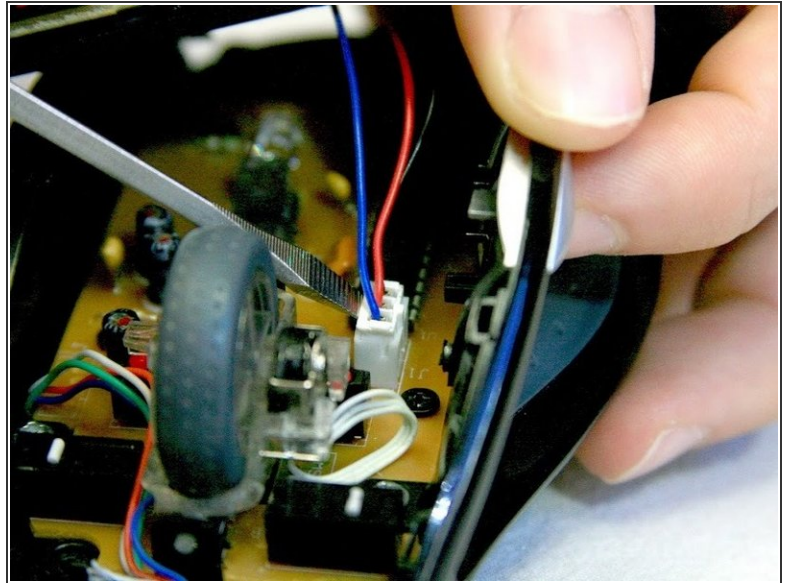
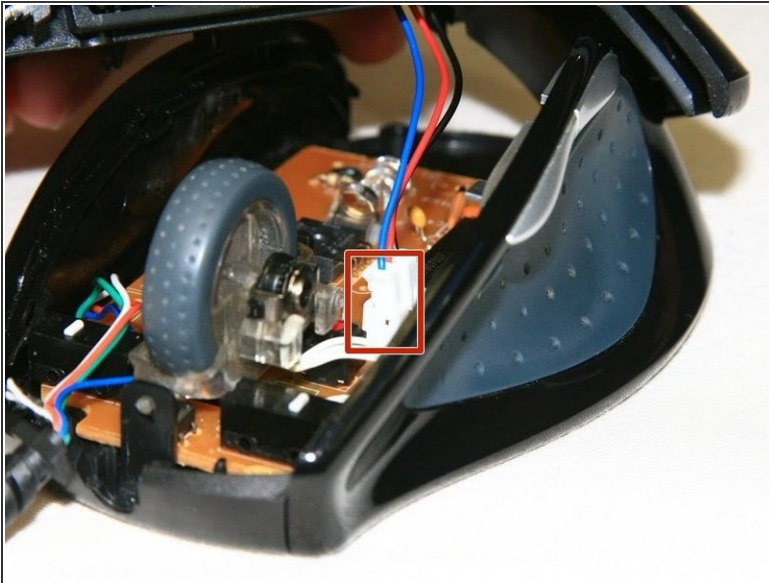
Step 4



⚠ The capacitors on this board can release stored electrical energy if touched.

- Touch your capacitor discharge tool to the capacitor leads on the board to release the stored energy. If leads are inaccessible, wait until you've removed the board from the mouse body.

Step 5



- Use a spudger to pry underneath the white plug and pop it out to disconnect the upper board from the lower board.

To reassemble your device, follow these instructions in reverse order.