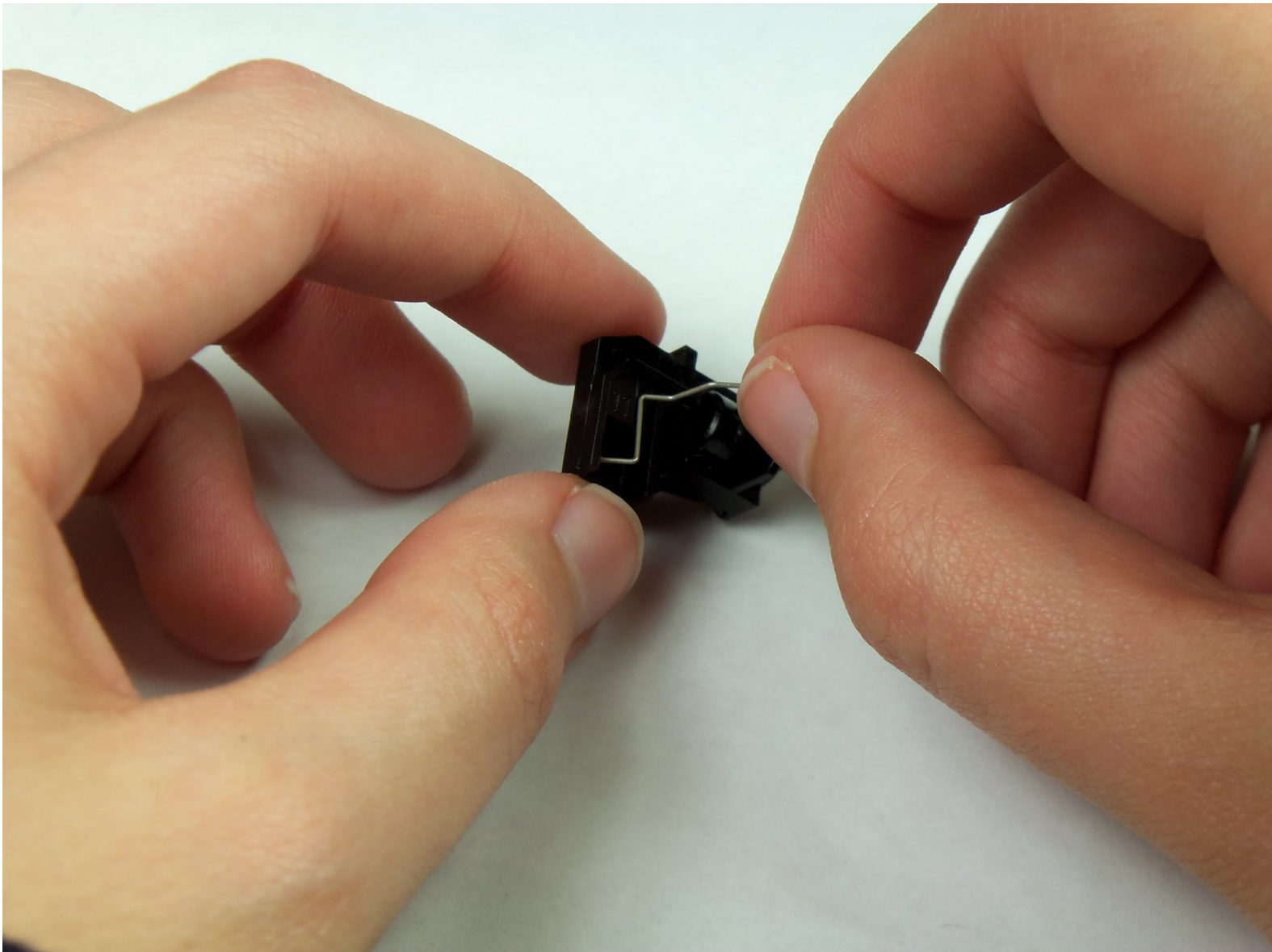




Logitech MBJ58 Mouse Resistance Spring Replacement

You will install the resistance spring.

Written By: Maximilian Betkowski



INTRODUCTION

The spring in the Logitech MBJ58 Mouse may wear down over time making it hard to scroll smoothly with consistent notches. This may require an easy replacement of the spring to return the mouse to normal functionality. This guide will help you learn how to remove and install the resistance spring of your mouse.



TOOLS:

- [Phillips #1 Screwdriver](#) (1)
-

Step 1 — Top cover



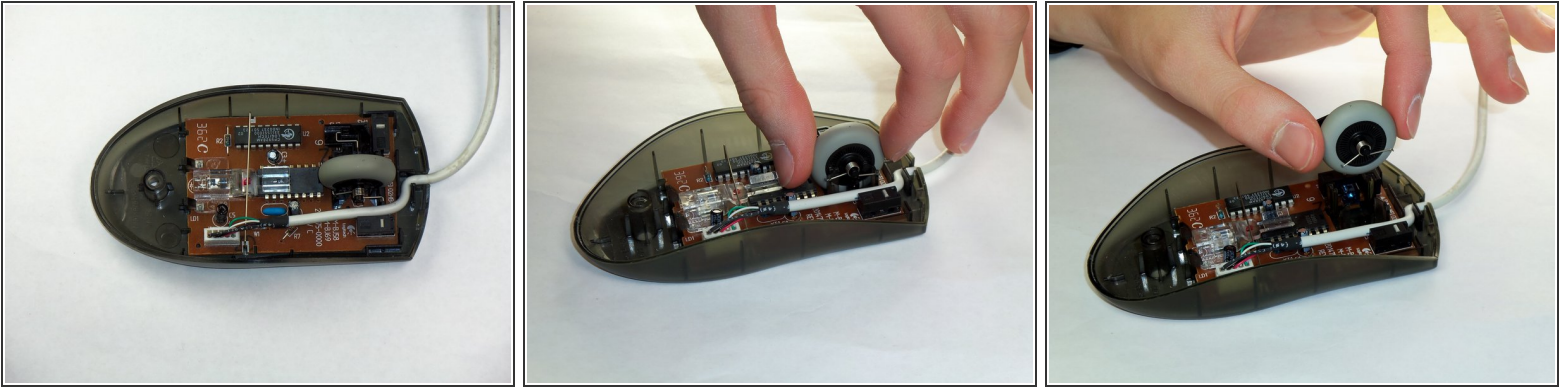
- Hold the mouse so that the bottom is facing up.
- Remove the single Phillips #1 screw from the bottom half of the mouse.

Step 2



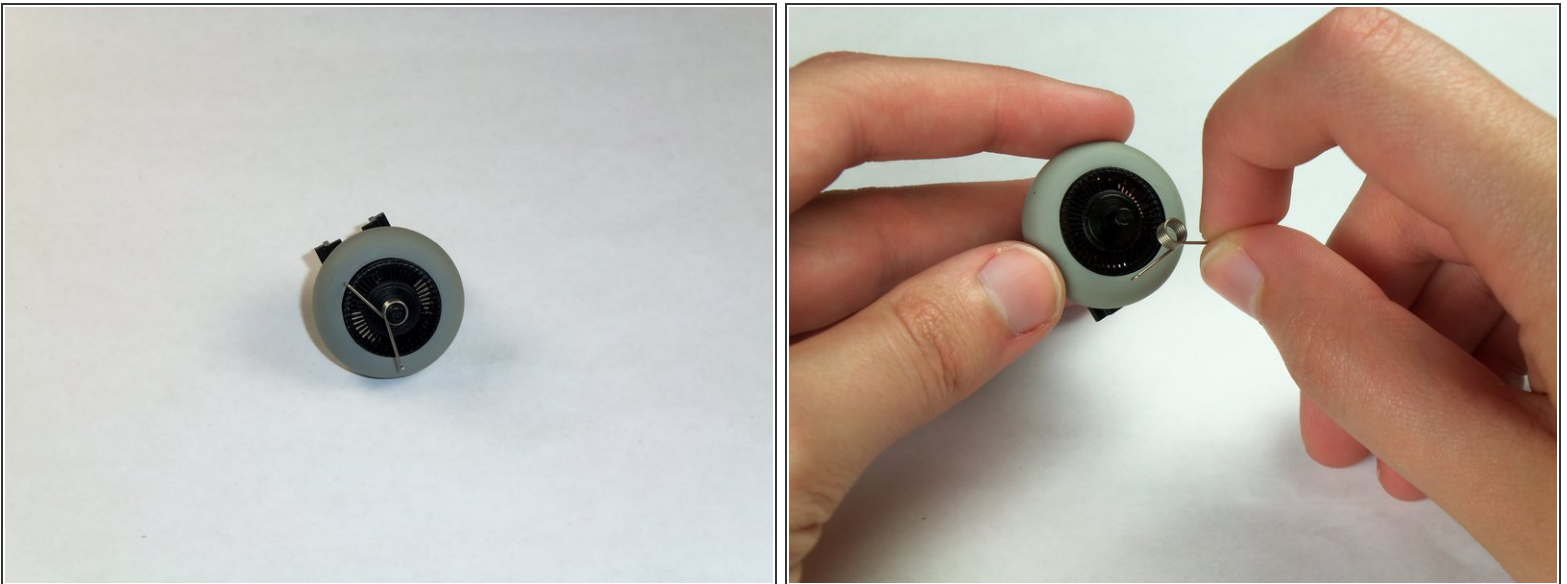
- Place the mouse so that the bottom is resting against a hard surface.
- Lift the top cover of the mouse gently, and remove it.

Step 3 — Removing the Logitech MBJ58 Mouse Scroll Wheel



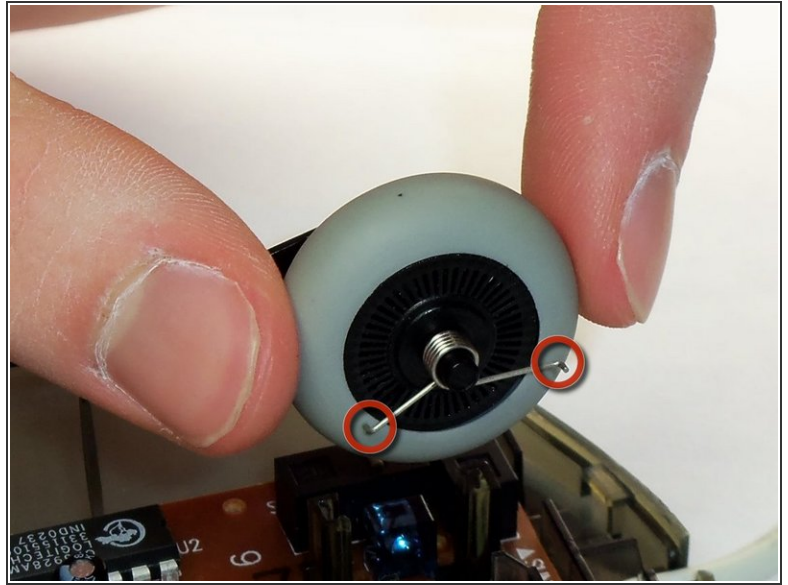
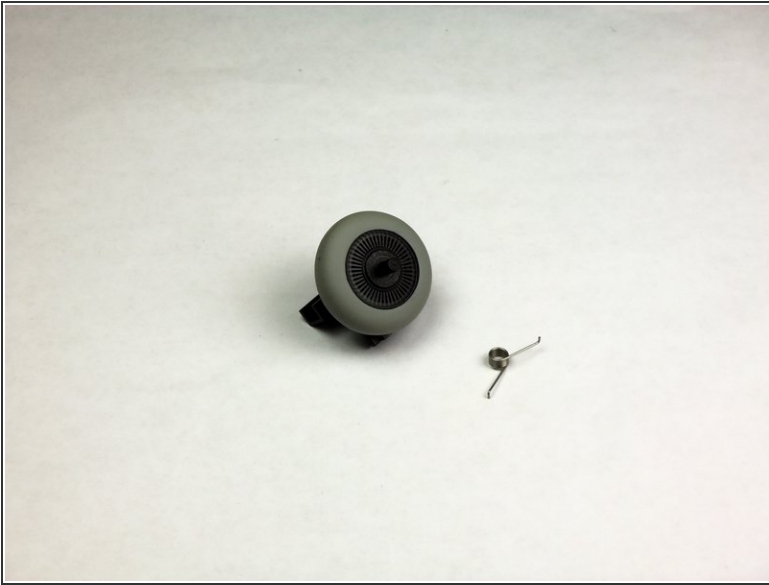
- Locate the scroll wheel on the mouse.
- Grab the scroll wheel with your thumb and index finger.
- Gently lift up, to remove the scroll wheel from the mouse.

Step 4 — Support Spring



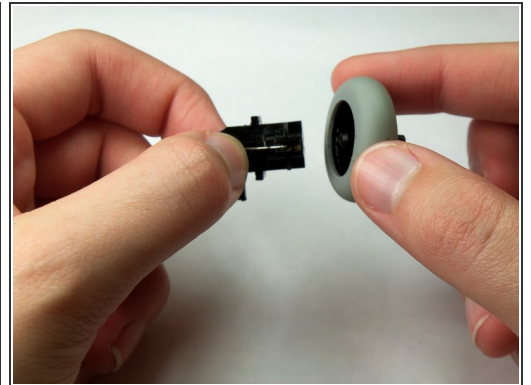
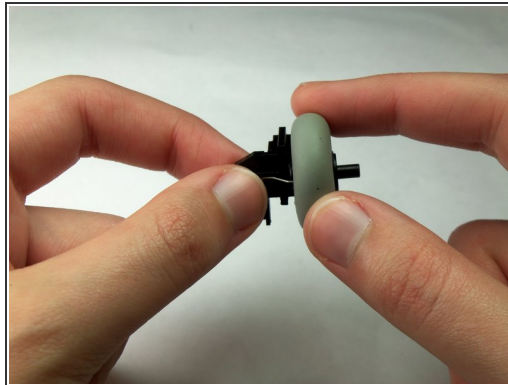
- Locate the spring on the scroll wheel, and carefully remove the spring.


Step 5 — Attaching the New Spring



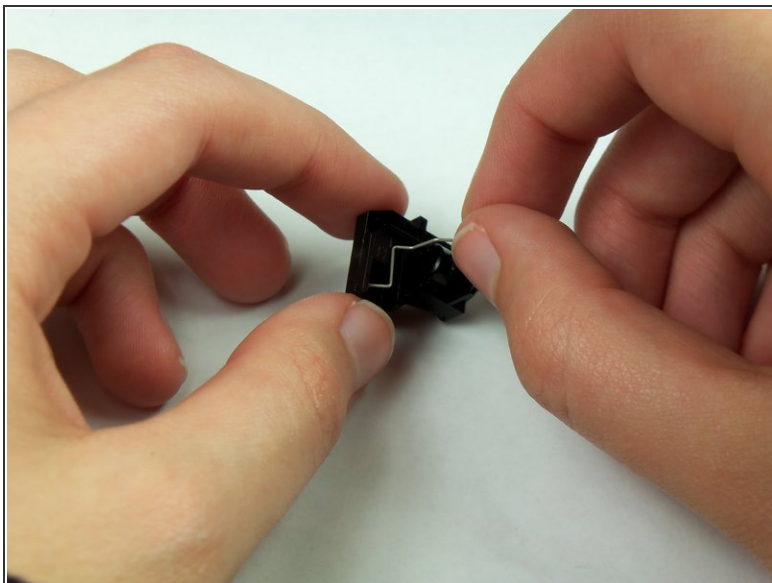
- Place the replacement spring on the correct side of the wheel (shown in the images) with the prongs pointing down.

Step 6 — Disassembling Logitech MBJ58 Mouse Scroll wheel from mount



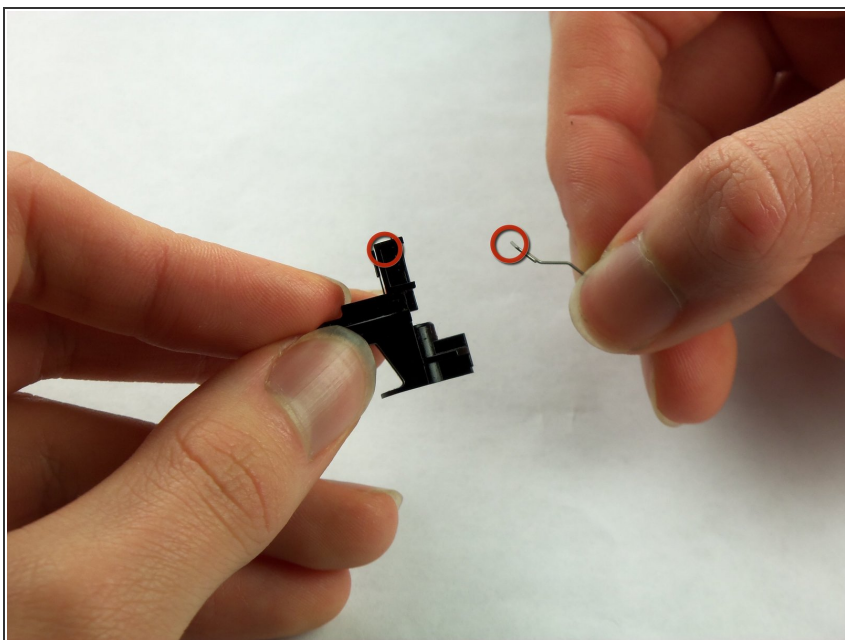
- Use the images to locate where the resistance spring is.
 **This spring will easily fall off.**
- Grab the scroll wheel and its mount and gently pull them apart.

Step 7 — Resistance Spring



- Grasp the top of the resistance spring and pull it towards yourself, letting the hook slide out of its hole.

Step 8



- Insert the hooked section of the replacement spring into the corresponding hole on the mount.

To reassemble your device, follow these instructions in reverse order.

This document was generated on 2022-06-22 06:43:15 PM (MST).

