



# Asus X553MA-BPD07051 Hard Drive Replacement

If you are having issues with windows giving...

Written By: Stephanie DeCarvalho



# INTRODUCTION

If you are having issues with windows giving you error messages for your hard drive, or have identified that there are bad sectors in the hard drive, this is an indication that the hard drive should be replaced on the laptop. Once you have identified that the hard drive is indeed the issue, replace it using this guide. For more troubleshooting advice, click [here](#). Ensure that before removing the hard drive, the laptop is powered off, and the battery has been removed.

## TOOLS:

Phillips #0 Screwdriver (1)

iFixit Opening Tool (1)

Magnetic Project Mat (1)

## PARTS:

Crucial MX500 1 TB SSD (1)

Crucial MX500 250 GB SSD (1)

Crucial MX500 500 GB SSD (1)

Crucial MX500 2 TB SSD (1)

## Step 1 — Battery



- Use a Phillips #0 screwdriver (PH0 bit) to remove the four 5.0 mm screws that are securing the bottom of the laptop.
- Use a Phillips #0 screwdriver (PH0 bit) to remove the six 11.0 mm screws that are securing the bottom of the laptop.

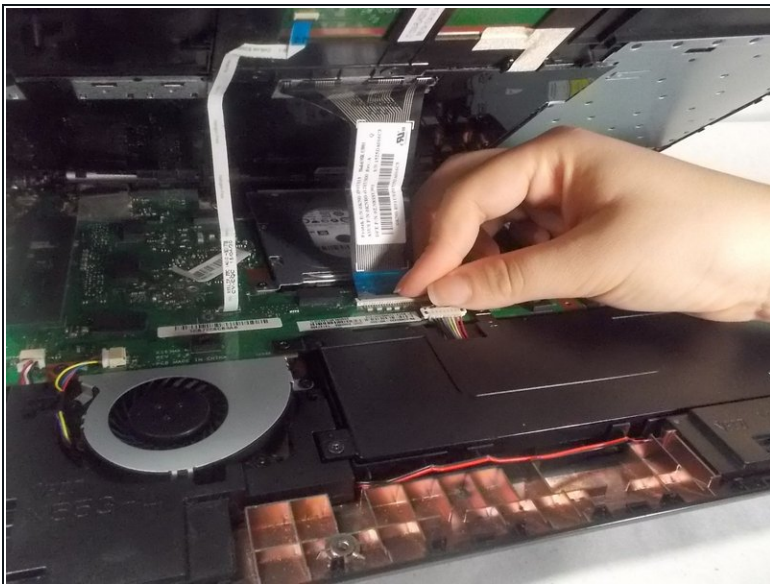
## Step 2



- Lift the edges of the keyboard using the plastic iFixit opening tool and raise the keyboard slightly to see the inside of the laptop.

⚠ Do not lift the keyboard too high as the keyboard is connected to the motherboard by two ribbon connectors that must be detached.

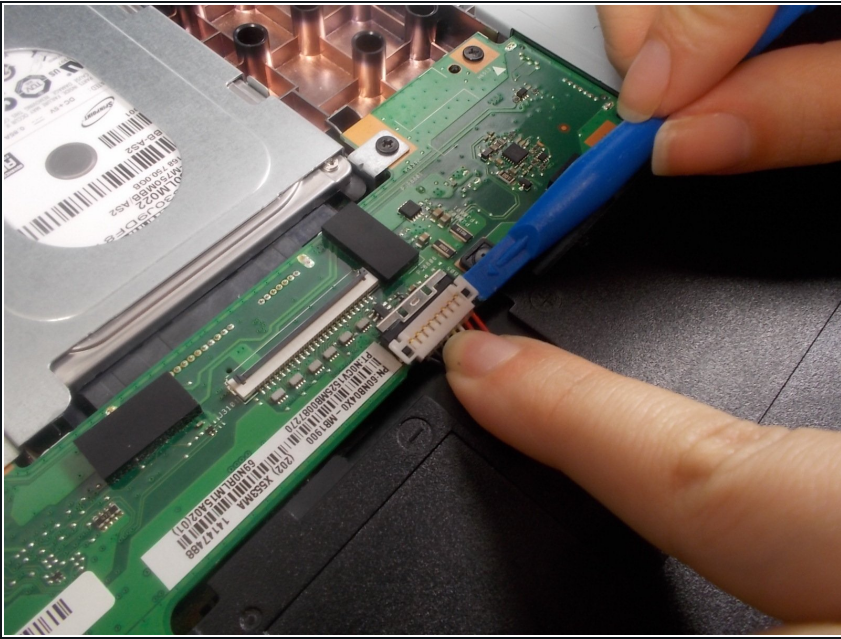
## Step 3



- Lift back the clip on the ribbon tape, and pull the tape out in order to remove the keyboard from the laptop.
- Remove both pieces of the ribbon tape connecting the keyboard to the motherboard.



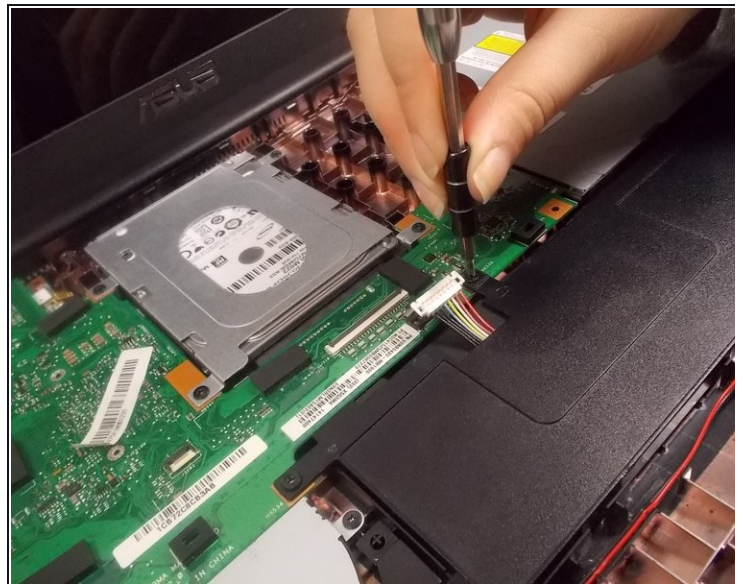
## Step 4



- Remove the bundled cable connector attaching the battery to the motherboard with the plastic iFixit opening tool.

⚠ Make sure that you do not remove the entire connector by applying too much force. Only the white plastic connector should be removed from the metal part on the motherboard.

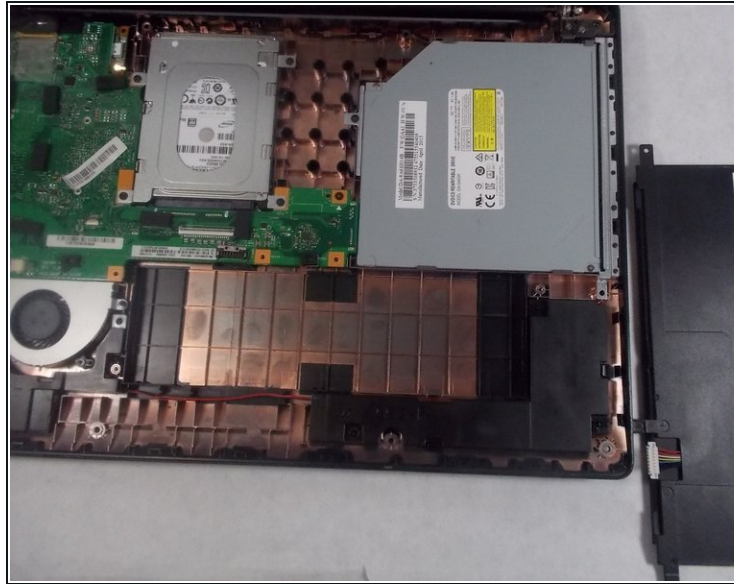
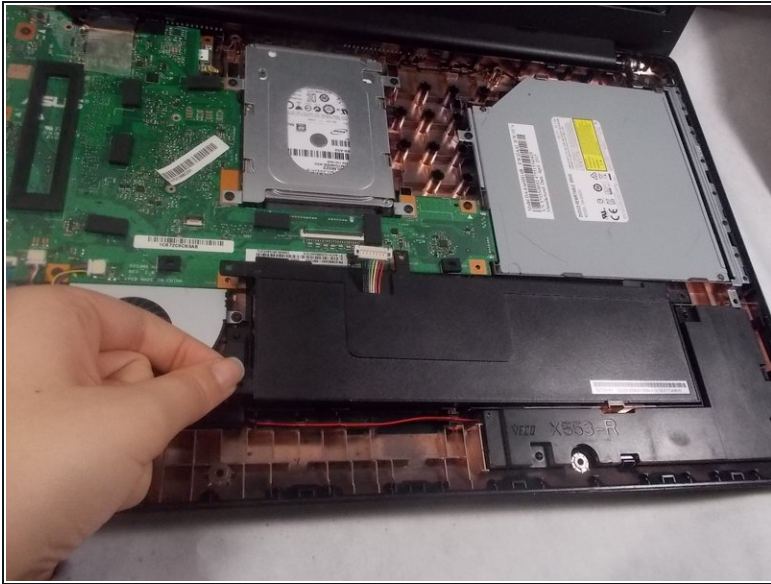
## Step 5



- Use Phillips #0 screwdriver (PH0 bit) to remove the four 6.0 mm screws attaching the battery to the laptop.

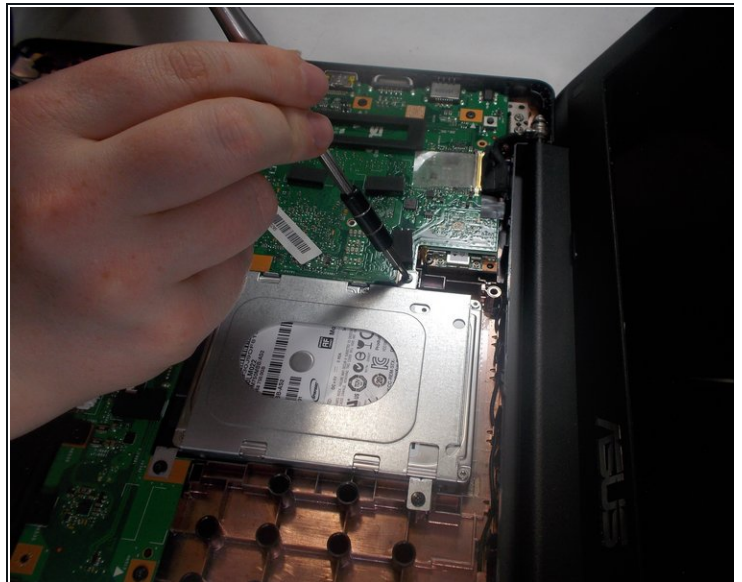


## Step 6



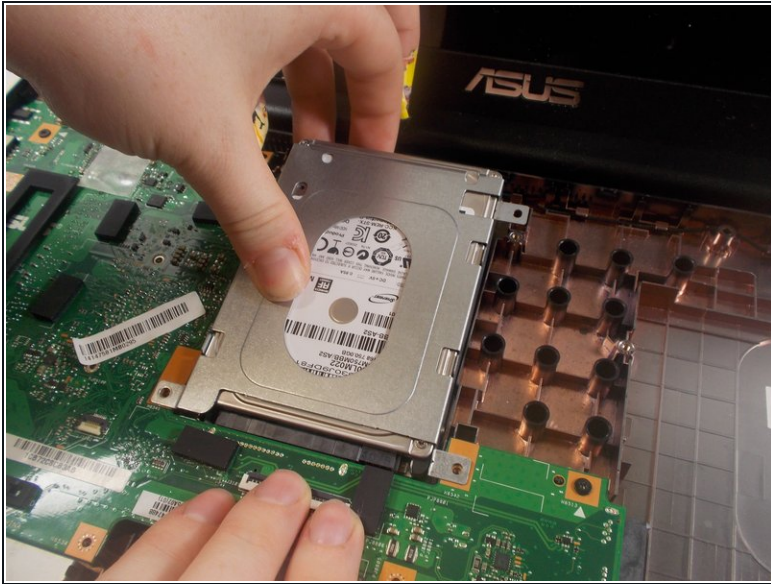
- Lift the battery up and remove it completely from the laptop.

## Step 7 — Hard Drive



- Use a Phillips #0 screwdriver (PH0 bit) to remove the four 6.0 mm screws that are securing the hard drive.

## Step 8



- Lift the hard drive up and pull it towards the screen so that it disconnects from the motherboard.

⚠ Use caution when disconnecting the hard drive from the motherboard, so that neither connector gets broken.

To reassemble your device, follow these instructions in reverse order.